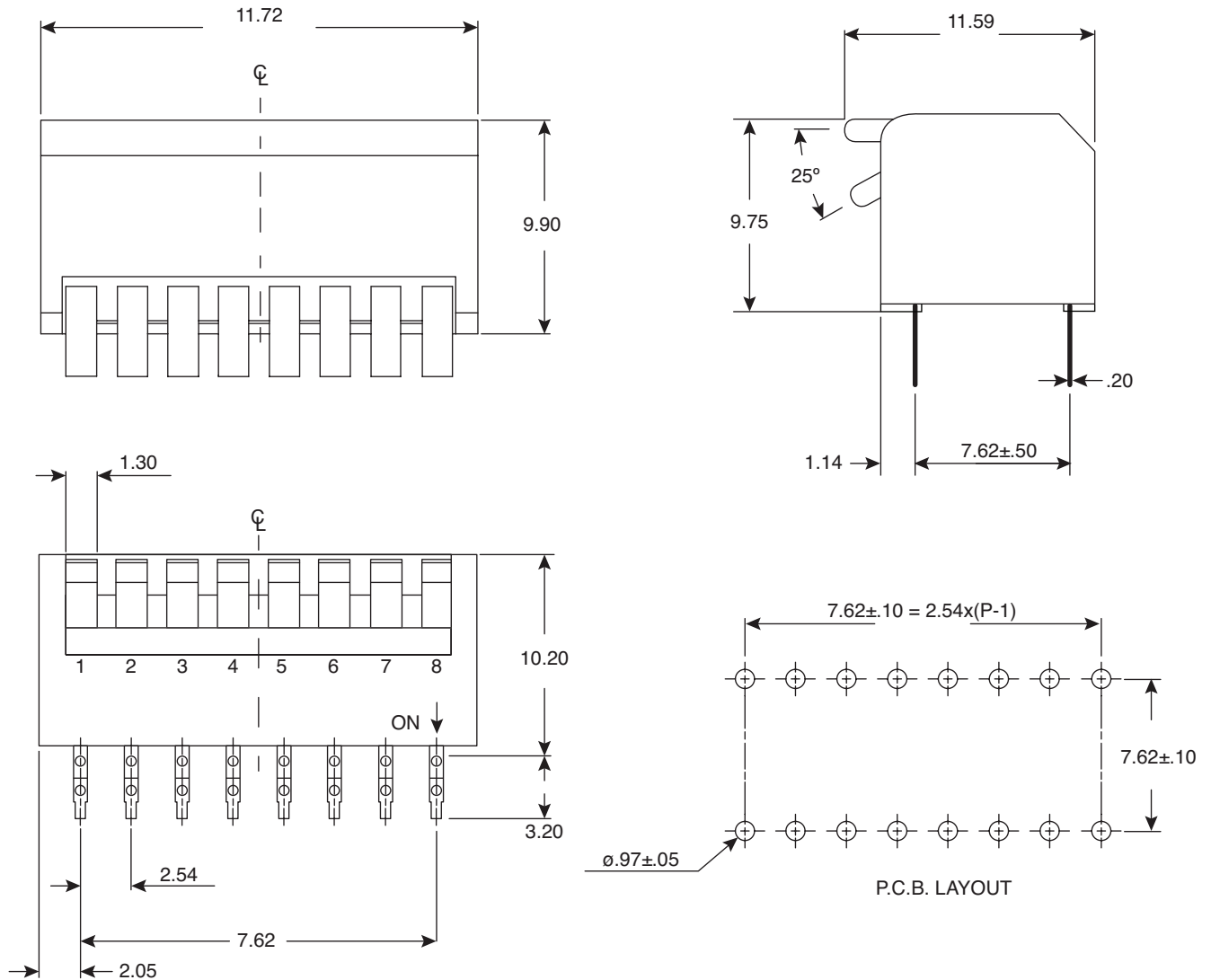


DIMENSIONS: mm



Electrical Specifications:

- Rating: Switching: 25mA/24VDC
Non-Switching: 100mA/50VDC
- Contact Resistance: 50mΩ Max. (Initial)
- Insulation Resistance: 100MΩ Min.
- Dielectric Strength: 500V AC (50Hz or 60Hz) for 1 min.

Soldering Process:

- Manual Soldering:
Soldering Temp and Continuous Time: Max.350°C
and Max. 5 seconds

Note:

- RoHS Compliant

Mechanical Specifications:

- Operating Temperature Range: -40° C to +85° C
- Storage Temperature Range: -40° C to +85° C

Side Actuated DIP Switch
106-LPD04-EV



X-ON Electronics

Authorized Distributor

Click to view similar products for [DIP Switches](#) / [SIP Switches](#) category:

[A6SN-9101](#) [PI-06-0900](#) [RPL-06](#) [76RSB05ST](#) [76RSB04T](#) [2161394-2](#) [A6SN-6104](#) [76SB02T](#)
[76PRB06ST](#) [PI-02-0900](#)