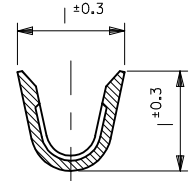
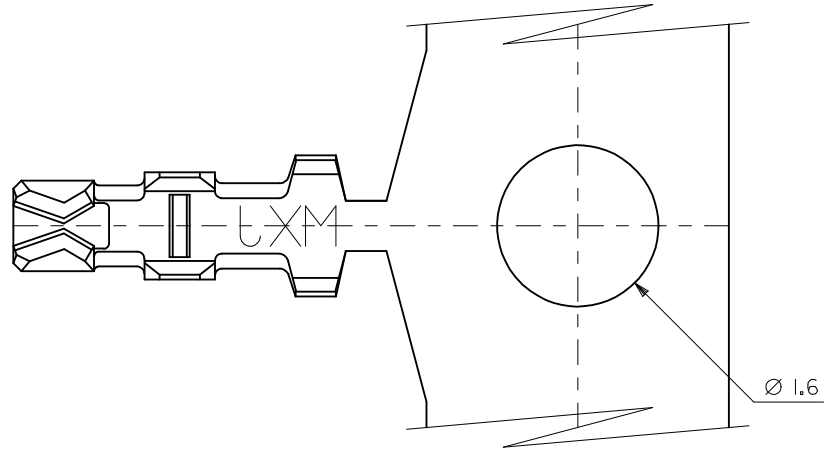
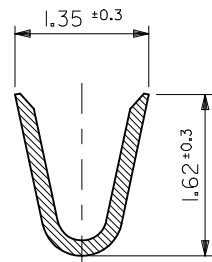


**注記**  
**NOTES**

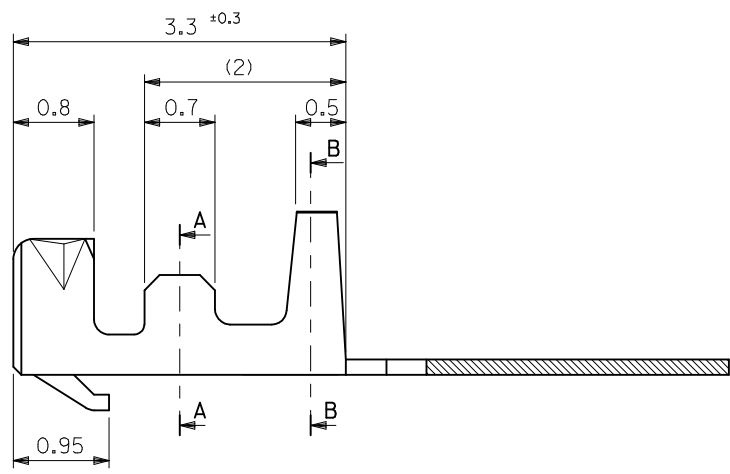
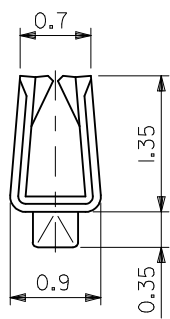
- 適合ハウジング：51021シリーズ  
APPLICABLE HOUSING : 51021 SERIES
- メッキ仕様 PLATING  
金メッキ 0.1μm MIN. (接点部)  
GOLD 0.1μm MIN. (CONTACT POINT)  
ニッケル下地 1μm MIN.  
NICKEL(UNDER) 1μm MIN.
- ELV及びRoHS適合品  
ELV AND RoHS COMPLIANT.



**SECT. A-A**



**SECT. B-B**



50058-8500	連鎖状 CHAIN
ENG. NO.	端子形状 FORM

材料 MATERIAL	リン青銅 PHOSPHOR BRONZE ( $t=0.15$ )
仕上げ FINISH	—
適用電線範囲 WIRE RANGE	AWG #28-32
被覆外径 INS. RANGE	$\phi 0.5-1.0$

RELEASED EC NO: J2014-1103 DRWN: TYAJIMA01 2014/03/12 CHKD: KASAKAWA APPR: NUKITA 2014/03/13 A	GENERAL TOLERANCES (UNLESS SPECIFIED)		DIMENSION STYLE	SCALE	DESIGN UNITS	THIRD ANGLE PROJECTION	1.25 WIRE TO BOARD CONN. CRIMP REC. TERMINAL  <b>molex</b> SD-50058-002 SHEET NO. 1 OF 1
	10 UNDER $\pm 0.2$		MM ONLY	20:1	METRIC		
	10 OVER 30 UNDER $\pm 0.25$		DRAWN BY	DATE	TITLE		
	30 OVER $\pm 0.3$		TYAJIMA01	2014/03/12	1.25 WIRE TO BOARD CONN. CRIMP REC. TERMINAL		
	ANGULAR $\pm 3^\circ$		CHECKED BY	DATE			
	DRAFT WHERE APPLICABLE MUST REMAIN WITHIN DIMENSIONS		KASAKAWA				
			APPROVED BY	DATE			
			NUKITA	2014/03/13			
			MATERIAL NO.	DOCUMENT NO.			
			SIZE	THIS DRAWING CONTAINS INFORMATION THAT IS PROPRIETARY TO MOLEX INCORPORATED AND SHOULD NOT BE USED WITHOUT WRITTEN PERMISSION			
			A3				

## X-ON Electronics

Largest Supplier of Electrical and Electronic Components

*Click to view similar products for [Terminals](#) category:*

*Click to view products by [Molex](#) manufacturer:*

Other Similar products are found below :

[HT-13-10](#) [71M-250-32-NB](#) [01-2065-1-0216](#) [00581P0075](#) [M10-10RX](#) [M10BCK](#) [60205-1](#) [604200-1](#) [60598-1-CUT-TAPE](#) [60617-1-C](#) [60873-1](#) [M14-516R/SK](#) [M14-6RSX](#) [M18-10FLX](#) [M18-8FBX](#) [M18-8R/LX](#) [M18BCK](#) [61314-6-C](#) [61-S](#) [61-SN-A](#) [62149-1](#) [62-NBM-A](#) [63-S](#) [640179-1](#) [640917-2-CUT-TAPE](#) [6501550002](#) [66107-2-C](#) [696683-1](#) [696834-1](#) [696861-1](#) [696931-1](#) [696999-1](#) [M8-516RK](#) [M86700006](#) [MA250DMFMX-A](#) [701-2007](#) [701-2307](#) [701-7761-03](#) [70F-110-32-PB](#) [718-N-A](#) [71M-187-20-NBL](#) [71M-250-32-NBL](#) [72F-187-20-NBL](#) [72M-250-32-NBL](#) [7310](#) [73F-250-32](#) [73F-250-32-NBL](#) [73F-250-32-NL](#) [F14-10C](#) [F-1M](#)