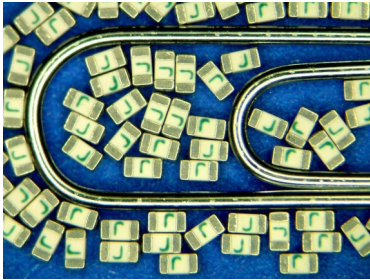


SolidMatrix® Surface Mount Fuses

HI Series (High Inrush), 0603 Size



Features:

- High inrush current withstanding capability
- Ceramic Monolithic structure
- Silver fusing element and silver termination with nickel and tin plating
- Symmetrical design with marking on both sides (optional)
- Operating temperature range: -55°C to +125°C (with de-rating)

Clearing Time Characteristics:

% of Current Rating	Clearing time at 25°C	
	4 hours min.	60 seconds max.
100%	4 hours min.	
200%	1 second min.	60 seconds max.
1000% (1-5A)	0.0002 seconds min.	0.02 seconds max.

Shape and Dimensions:

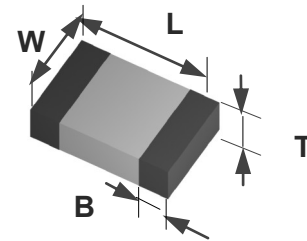
Unit	Inch	mm
L	0.063 ± 0.006	1.60 ± 0.15
W	0.031 ± 0.006	0.80 ± 0.15
T	0.031 ± 0.006	0.80 ± 0.15
B	0.014 ± 0.006	0.36 ± 0.15

Agency Approval:

Recognized Under the Components Program of UL.
File Number: E232989.

Patents:

Patent numbers "US6,034,589", "US6,602,766", "US7,268,661 B2", "ZL00134544.3", "ZL02114719.1", "ZL200410104280.7", "ZL201020551360.8", "ZL201010299185.2", "ZL201220030614.0", "ZL201210020693.1".



Ordering Information:

Part Number	Current Rating (A)	Voltage Rating (VDC)	Interrupting Ratings	Nominal Cold DCR(Ω) ¹	Nominal I ² t (A ² s) ²	Marking (Optional) ³
F0603HI1000V032T	1.0	32	50 A at rated voltage	0.210	0.08	E
F0603HI1500V032T	1.5	32		0.101	0.11	G
F0603HI2000V032T	2.0	32		0.057	0.24	I
F0603HI2500V032T	2.5	32		0.042	0.56	J
F0603HI3000V032T	3.0	32		0.030	0.72	K
F0603HI3500V032T	3.5	32		0.022	1.10	L
F0603HI4000V032T	4.0	32		0.018	2.08	M
F0603HI4500V032T	4.5	32		0.014	2.63	T
F0603HI5000V032T	5.0	32		0.013	3.25	N
F0603HI6000V032T	6.0	32	80 A at rated voltage	0.010	4.00	O
F0603HI7000V032T	7.0	32		0.008	5.00	P
F0603HI8000V032T	8.0	32		0.006	7.00	R

1. Measured at ≤ 10% rated current and 25°C ambient.

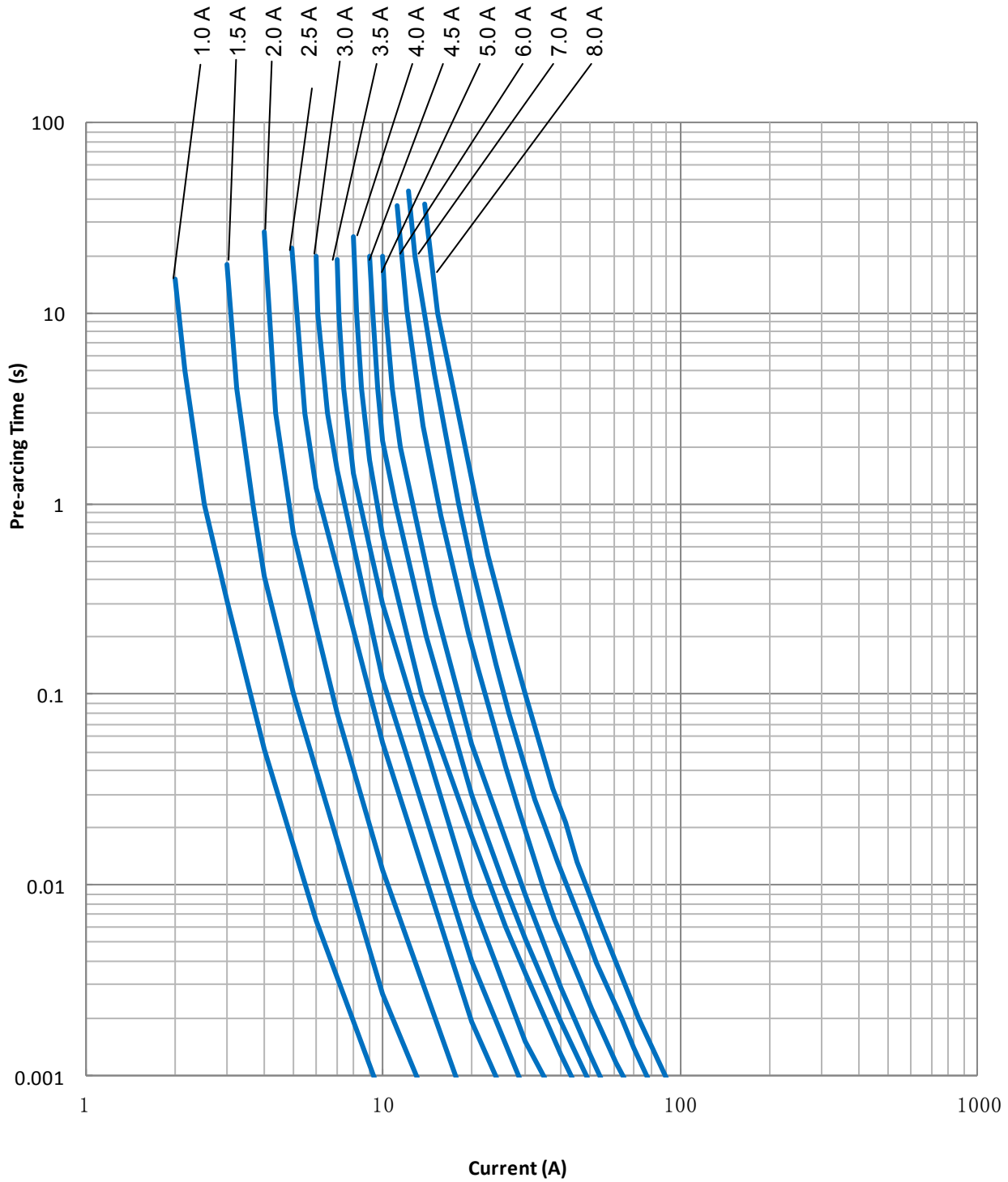
2. Melting I²t at 1000% of current rating.

3. Green Marking Character Code.

SolidMatrix[®] Surface Mount Fuses

HI Series (High Inrush), 0603 Size

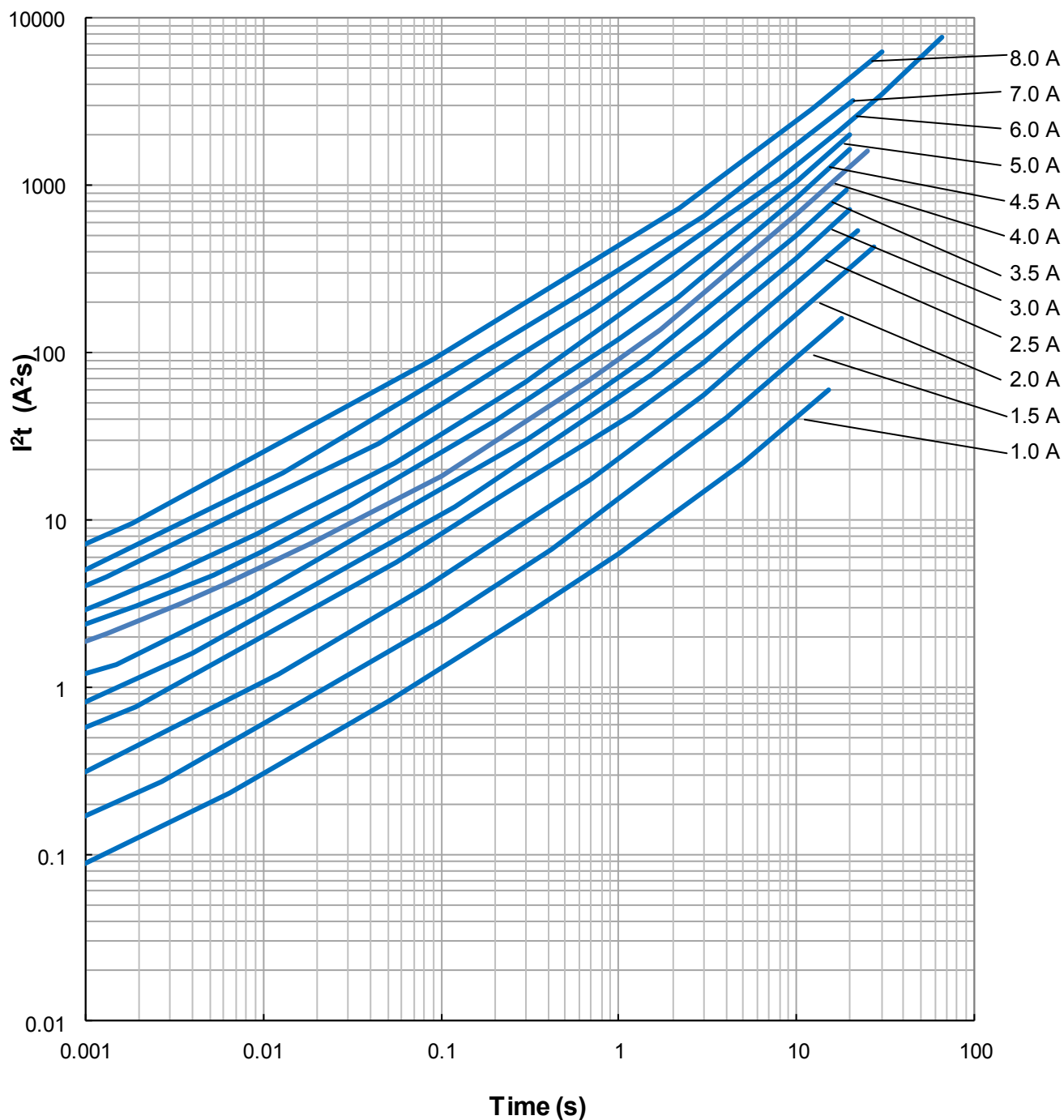
Average Pre-arcing Time Curves:



SolidMatrix[®] Surface Mount Fuses

HI Series (High Inrush), 0603 Size

Average I^2t vs. t Curves:



X-ON Electronics

Largest Supplier of Electrical and Electronic Components

Click to view similar products for [Surface Mount Fuses](#) category:

Click to view products by [AEM](#) manufacturer:

Other Similar products are found below :

[FHC20402ADTP](#) [FT600-0500-2](#) [NFVC6125S0R50TRF](#) [SFT-125MA](#) [TF16SN2.00TTD](#) [TF16SN3.15TTD](#) [41921000000](#) [TR/3216LR-500MA](#) [CCP2B20TTE](#) [TR-3216FF4-R](#) [SST 1-1K](#) [SST 5 -1K](#) [SST 2-1K](#) [TR2-TCP500-R](#) [F60C500V12AS](#) [FCC16501ABTP](#) [FCC16102ABTP](#) [FHC16322ADTP](#) [0308.250UR](#) [0308.375UR](#) [0308.500UR](#) [0308.750UR](#) [0308001.UR](#) [030801.5UR](#) [FCC16202ABTP](#) [3-122-714](#) [3-122-720](#) [3-122-718](#) [3-122-712](#) [3-122-716](#) [03081.25UR](#) [CQ06LF 5A 32V](#) [CQ06LT 5A 32V](#) [SET 2A 125V \(G\)](#) [SET 1A 125V \(G\)](#) [SEF 10A 125V \(G\)](#) [SEF 3A 125V \(G\)](#) [SEF 4A 125V \(G\)](#) [SEF 6A 125V \(G\)](#) [SEF 7A 125V \(G\)](#) [SET 4A 125V \(G\)](#) [SET 3A 125V \(G\)](#) [SET 5A 125V \(G\)](#) [SET 7A 125V \(G\)](#) [F0603G0R03FNTR](#) [SKY87604-12](#) [SKY87604-11](#) [SKY87604-13](#) [0154002.DRL](#) [0154008.DRL](#)