

345 Series Shock-Safe Panel Mount Enclosed Fuse Holders



Product Characteristics

Compatible Fuses	For 3AB, 3AG, 5x20mm, or 2AG Fuses
Description	Designed to eliminate the possibility of electrical shock, as defined in IEC 60127-6. The universal fuseholder body will accept 3AB, 3AG, 5 × 20mm, and 2AG fuse sizes depending on knob selected. Permits inventory reduction of bodies and provides knob interchange versatility. Anti-tease feature eliminates circuit interruption when knob is accidentally depressed. Five fuseholder types assure design flexibility. Available with two knob styles — screwdriver slot or fingergrip. Available in two terminal styles — dual-purpose for soldering or 3/16" NEMA quick connect; and ¼" NEMA/DIN quick connect. Quick fuse size identification is provided with letters on fingergrip knob and color-coded screwdriver slot knobs.
Electrical	Insulation Resistance: 10,000 megohm minimum at 500 VDC. Contact Resistance: Less than .005 ohm average at currents up to 1 ampere.
Mounting	Threaded styles withstand 15 in.-lb. mounting torque. Low profile and High profile panel thickness: .032" min./ .310" max. Quick mount panel thickness: .012" min./ .360" max. Rear mount panel thickness: .012" min./ .260" max.
Molded Parts	Body Material: Black glass-filled thermoplastic (UL94 V0).
Knob Material	Grey, blue or black glass-filled thermoplastic (UL94 V-0) Hex Nut Material: Black glass-filled thermoplastic.
Knob	Finger-Grip, Fuse Extractor type or Screwdriver Slot, Fuse Extractor type with plated copper alloy insert. Plated copper alloy contact clips. Spring loaded, locking mechanism provides an anti-tease feature and will not vibrate loose.
Terminals	Copper alloy. Tin-plated. Three styles available. A .187" dual purpose terminal accepts wire for soldering or a Quick-Connect receptacle. .187" terminal for NEMA Quick-Connect and .250" terminal for NEMA/DIN Quick-Connect available.
Ambient Temperature*	-40°C to +85°C.
Hardware	Threaded style fuseholders are supplied with a thermoplastic hex nut unassembled. Quick mount style fuseholders are supplied with a push-on type retaining nut, black oxide finish, unassembled. A synthetic rubber "O" ring will be supplied only with the screwdriver slot knob when the drip-proof version is requested. To order with a metal internal tooth lockwasher (L) and/or neoprene panel washer (N) and/or drip-proof synthetic rubber "O" ring with Neoprene washer (NP) [Screwdriver slot knob only], add the appropriate suffix (L, N, or NP) respectively (or in combination) to the catalog number. Accessories can be order by separately.

* - Refer to [Fuseology](#) for information on proper re-rating.

Additional Information



Datasheet



Resources

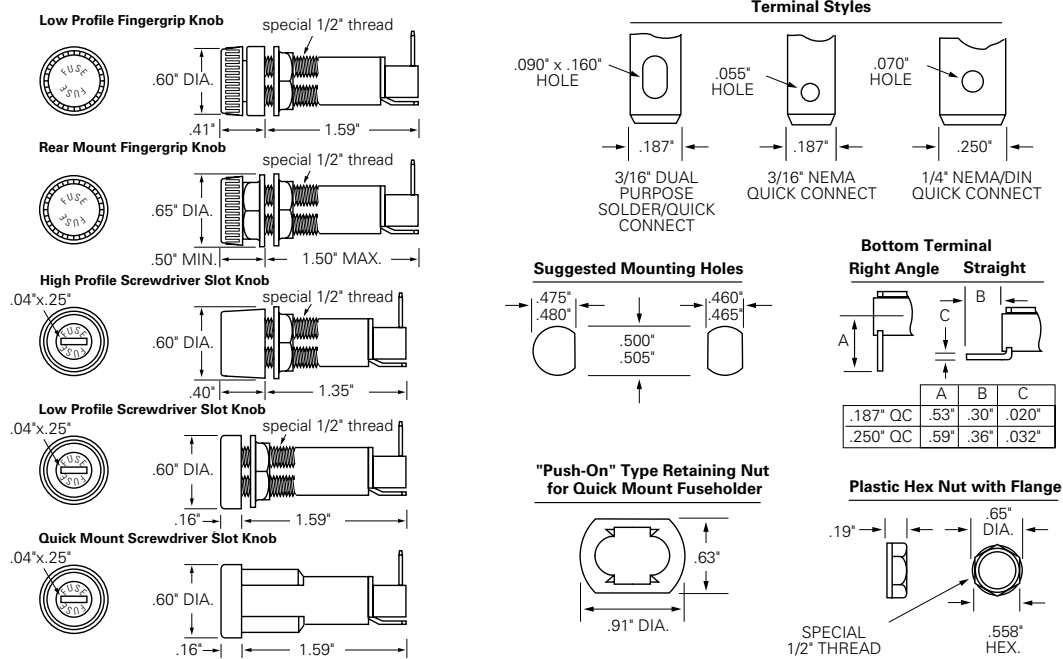


Samples

Agency Approval

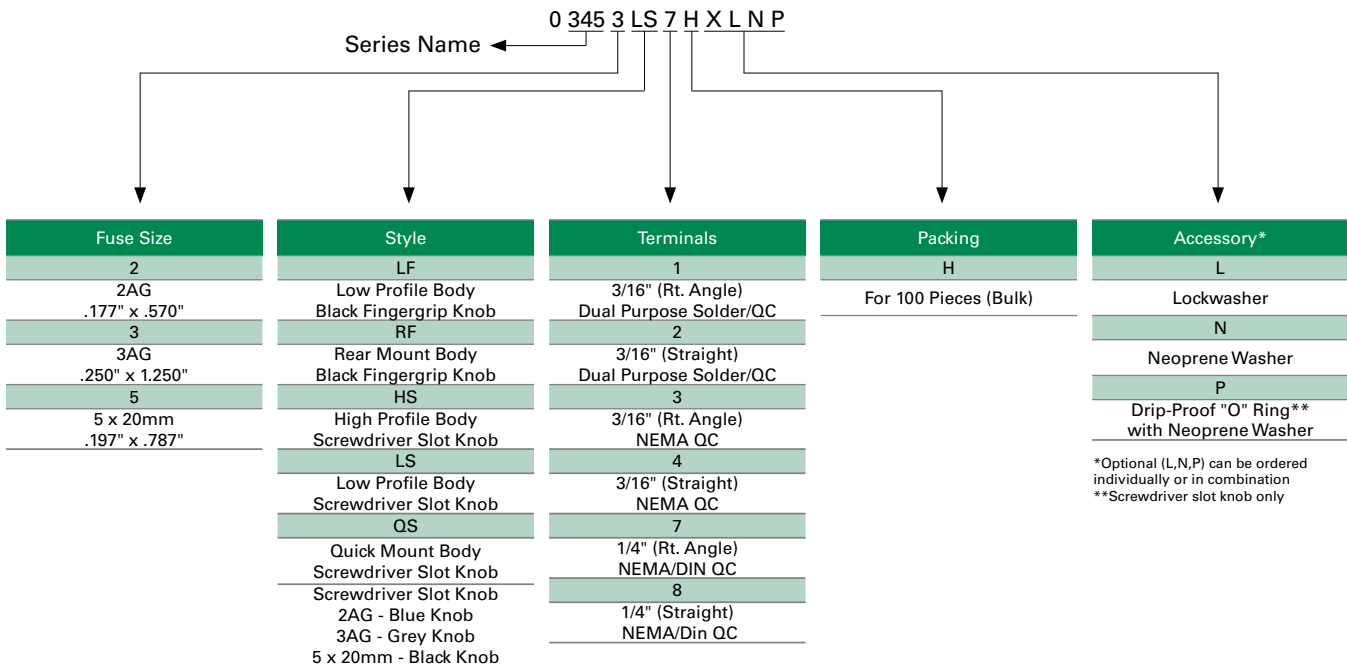
Agency	Agency File Number	3AG/AB (6.3x32mm)	5x20mm	2AG
	E14721	20A 250V	20A 250V	10A 250V
	7316	20A 250V	20A 250V	10A 250V
	40001642	10A 250V	10A 250V	—

Dimensions



Ordering Part Numbering System to order complete fuse holder (body and knob)

Example 03453LS7HXLNP - A 345 Series fuse holder for 3AG fuses with low profile body and a Screwdriver Slot knob, with 1/4" (Rt. Angle) Nema/Din QC terminals.



Note - If accessory is needed, add the "X" as filler on the ordering part number

To Order Body Including Nut(s) Only

Terminal Style	Bottom Terminal	Low Profile Body Part Number***	High Profile Body Part Number	Rear Mount Body Part Number	Quick Mount Body Part Number
3/16" Dual Purpose	(Rt. Angle)	03453QS4ZX010	03453QS4ZX010	03453QS4ZX010	03453QS4ZX010
3/16" Dual Purpose	(Straight)	03453QS4ZX010	03453QS4ZX010	03453QS4ZX010	03453QS4ZX010
3/16" NEMA QC	(Rt. Angle)	03453QS4ZX010	03453QS4ZX010	03453QS4ZX010	03453QS4ZX010
3/16" NEMA QC	(Straight)	03453QS4ZX010	03453QS4ZX010	03453QS4ZX010	03453QS4ZX010
¼" NEMA/DIN QC	(Rt. Angle)	03453QS4ZX010	03453QS4ZX010	03453QS4ZX010	03453QS8ZX010
¼" NEMA/DIN QC	(Straight)	03453QS4ZX010	03453QS4ZX010	03453QS4ZX010	03453QS8ZX010

***Low Profile Body will accept either Fingergrip or Screwdriver Slot Knob.
 Z - 100 pieces (Bulk)
 X - Filler

To Order Knob Only

Fuse Size	Fingergrip Knob	Screwdriver Slot Knob
2AG	03452LF1HX020	03453LF1HX020
3AG	03453LF1HX020	03453LF1HX020
5 × 20mm	03453LF1HX020	03453LF1HX020

H - 100 Pieces (Bulk)
 X - Filler

To Order Accessories Only

Accessory	Packaging	Part Number
ACS Rubber Washer	Bulk (100 pieces)	09010002H
ACS Nut	Bulk (100 pieces)	09030097H
ACS Lockwasher	Bulk (100 pieces)	09050023H
ACS O-Ring	Bulk (100 pieces)	09010134H

H - 100 Pieces (Bulk)

Disclaimer Notice - Information furnished is believed to be accurate and reliable. However, users should independently evaluate the suitability of and test each product selected for their own applications. Littelfuse products are not designed for, and may not be used in, all applications. Read complete Disclaimer Notice at: www.littelfuse.com/disclaimer-electronics.

X-ON Electronics

Largest Supplier of Electrical and Electronic Components

Click to view similar products for [Fuse Holder](#) category:

Click to view products by [Littelfuse](#) manufacturer:

Other Similar products are found below :

[570-290-741P40](#) [570-290-751P40](#) [0031.1351.01](#) [020417G](#) [020418E](#) [80910030](#) [8601.2020](#) [9-3557-GP REV A](#) [15600-08-10](#) [BK1-HTC-45M](#)
[BK/FHN19G](#) [BK/HJM-HH](#) [BK/HKP-CCHH](#) [BK/HKP-E-CC](#) [BK/HKP-E-HH](#) [BK/HKP-EH-HH](#) [BK/HKP-U-HH](#) [BK/HTJ-LES-FUSE](#)
[HMG-241](#) [2086-1](#) [2193](#) [RTMF-SC](#) [2602](#) [2650](#) [FHN31G1](#) [G4PB8](#) [2660](#) [2799](#) [CQ-209V](#) [345621A](#) [3794](#) [4202](#) [4408](#) [4413](#) [4423](#) [4482](#)
[4532](#) [4537](#) [TSD1404-12](#) [BK/FHN31G1](#) [BK/HKP-H-CC](#) [BK/HKP-JQ-BB](#) [BK/HKP-JQW-BB](#) [BK/HKP-N-HH](#) [BK/HKP-S-CC](#) [BK/HKP-W-](#)
[BBHH](#) [BP/HHS](#) [BPHHU](#) [55900008011](#) [C1933](#)