

# PTS641 Series SMT Top Actuated Switches

Tactile Switches

B



## Features/Benefits

- 6.3 x 6.3 mm footprint
- Multiple heights
- Ground pin option

## Typical Applications

- Metering
- White goods
- Home and garden equipment

### Specification

FUNCTION: Momentary action  
CONTACT ARRANGEMENT: 1 make contact = SPST N.O.  
TERMINALS: G type for SMT

### Mechanical

TRAVEL:  
0.20 mm ±0.15 mm for 160 & 250 gf  
0.30 mm ±0.15 mm for 320 gf  
OPERATING LIFE: 100,000 cycles  
OPERATION FORCE:  
160 gf ±50 gf blue actuator  
250 gf ±50 gf red actuator  
320 gf ±80 gf black actuator

### Packaging

Switches in reels of 1,500 pieces.  
Dimensions of reels according to EIA 481B  
External diameter 330 mm

### Electrical

MAXIMUM VOLTAGE: 12 VDC  
MAXIMUM CURRENT DC: 50 mA  
DIELECTRIC STRENGTH: 250 VA C (1mn)  
CONTACT RESISTANCE: 100 m Ω  
INSULATION RESISTANCE: ≥ 100 M Ω  
BOUNCE TIME: < 5 ms

### Environmental

OPERATING TEMPERATURE: -20°C to 85°C

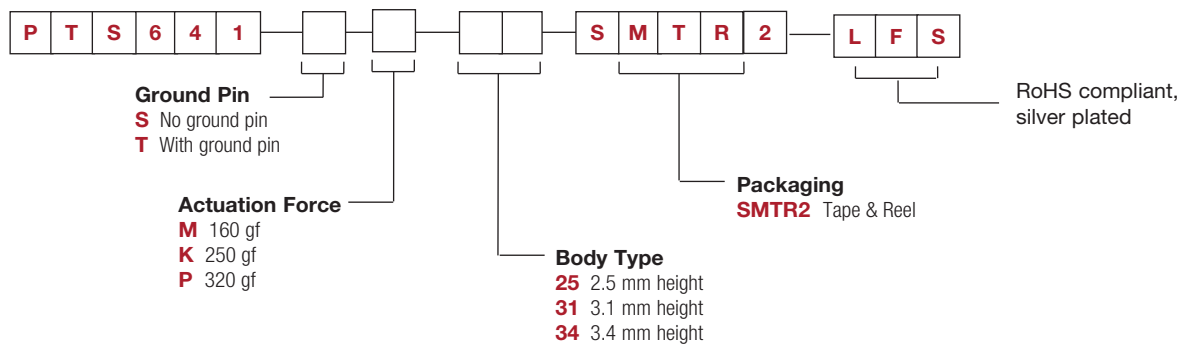
### Process

SOLDERING: This component is suited to the following methods:  
Infrared Reflow Soldering in accordance with IEC61760-1

**NOTE:** Specifications listed above are for switches with standard options.  
For information on specific and custom switches, consult Customer Service Center.

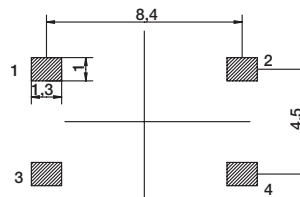
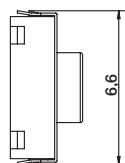
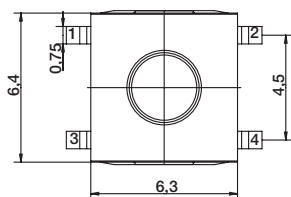
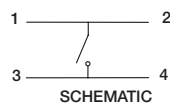
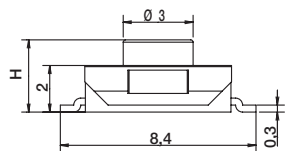
### How To Order

Our easy build-a-switch concept allows you to mix and match options to create the switch you need. To order, select desired option from each category and and place it in the appropriate box.



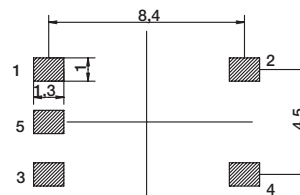
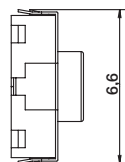
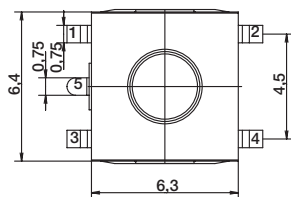
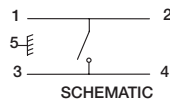
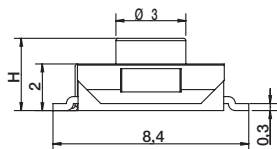
# PTS641 Series SMT Top Actuated Switches

**NO GROUND PIN** H = 2.5, 3.1, or 3.4 mm



RECOMMENDED PCB LAYOUT

**GROUND PIN** H = 2.5, 3.1, or 3.4 mm



RECOMMENDED PCB LAYOUT

Tactile Switches

## X-ON Electronics

Largest Supplier of Electrical and Electronic Components

*Click to view similar products for [Tactile Switches](#) category:*

*Click to view products by [C&K](#) manufacturer:*

Other Similar products are found below :

[KMR633NG](#) [LFG](#) [5GTH9202242](#) [6426-201-11343](#) [MJ1226](#) [MJTP1109B](#) [MJTP1138EAUTR](#) [MJTP1230BL](#) [MJTPSHW](#) [GS6.90F300QP](#) [1-1977223-0](#) [1-1977120-4](#) [ADTSA62NV](#) [ADTSA62RV](#) [ADTSA63KV](#) [ADTSA644NV](#) [ADTSM24NVTR](#) [ADTSMW66NV](#) [ADTSMW67RV](#) [ATM533VTR](#) [1571300-3](#) [B3F-3123](#) [B3F-6055A](#) [B3F-B32-01-KIT](#) [1977177-8](#) [1977266-1](#) [2-1977223-4](#) [2-1977223-7](#) [ADTS644KV](#) [ADTSA61RV](#) [ADTSA62KV](#) [ADTSA63NV](#) [ADTSA63RV](#) [ADTSA65NV](#) [ADTSM21NSVTR](#) [ADTSM25RVTR](#) [ADTSM31RVTR](#) [ADTSM32NVTR](#) [ADTSM61YVTR](#) [ADTSM63SVTR](#) [ADTSM644KVTR](#) [ADTSMW64RV](#) [ADTSMW69NV](#) [FSMRA4JHA04](#) [GS4.70F300QP](#) [D38999/20JJ37SA](#) [TL1105B](#) [TL1105J](#) [ATH447K2Q](#) [ATM534VTR](#) [MJ1215](#)