

IEC Appliance Inlet C14 with Filter, Line Switch 1- or 2-pole, PCB Mounting

Standard- or Medical-Filter



### Description

- Panel Mount:  
Screw-on mounting on PCB from rear-side
- 3 Functions:  
Appliance Inlet Protection class I, Line Switch 1- or 2-pole, Line filter in standard and medical version
- For PCB mounting

### Approvals

- VDE Certificate Number: 40001522
- UL File Number: E72928

### Characteristics

- Ultra-compact design
- All single elements are already wired
- Line switch non-illuminated or illuminated
- With EMC-shield
- Especially suitable for use in switching power supplies  
Ideal for application with high transient loads
- Suitable for use in equipment according to IEC/UL 60950  
Suitable for use in medical equipment according to IEC/UL 60601-1

### Other versions on request

- Fixing on PCB with self-tapping screws 3 mm or pre-inserted nuts M3
- Other rocker marking
- Illuminated green
- Medical version M80
- Capacitance CX1

### References

- Alternative: version without line filter [DC21](#)  
Alternative: Standard version [DC21](#)

### Weblinks

[pdf-datasheet](#), [html-datasheet](#), [General Product Information](#), [Approvals](#), [CE declaration of conformity](#), [RoHS](#), [CHINA-RoHS](#), [REACH](#), [Mating Connectors](#), [e-Shop](#), [SCHURTER-Stock-Check](#), [Distributor-Stock-Check](#), [CAD-Drawings](#), [Accessories](#), [Detailed request for product](#)

Newly available variants corresponding to V-Lock mating cordset. The connector is equipped with a notch intended for use with the latching cordset. The cord latching system prevents against accidental removal of the cordset.

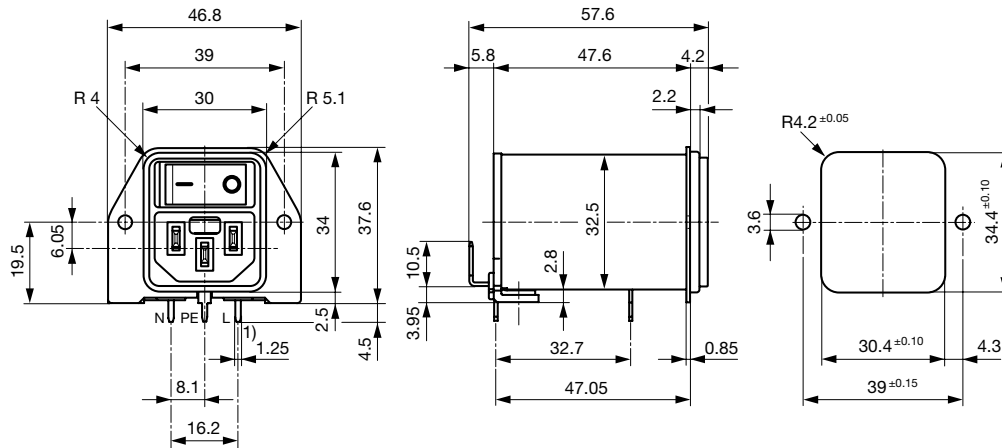
### Technical Data

|                           |  |
|---------------------------|--|
| Ratings IEC               | 1 - 10A @ Ta 40 °C / 250 VAC; 50Hz   |
| Ratings UL/CSA            | 1 - 10A @ Ta 40 °C / 125 VAC; 60Hz   |
| Leakage Current           | standard < 0.5 mA (250 V / 60Hz)<br>medical < 5 µA (250 V / 60 Hz)                             |
| Dielectric Strength       | > 1.7 kVDC between L-N<br>> 2.7 kVDC between L/N-PE<br>Test voltage (2 sec)                    |
| Allowable Operation Temp. | -25 °C to 85 °C  |
| Climatic Category         | 25/085/21 acc. to IEC 60068-1  |
| Degree of Protection      | from front side IP 40 acc. to IEC 60529  |
| Protection Class          | Suitable for appliances with protection class I acc. to IEC 61140                              |
| Terminal                  | For PCB mounting ; Ground terminal:<br>Quick connect terminals 6.3 x 0.8 mm angled to pin axis |
| Panel Thickness s         | Screw: max 4 mm<br>Mounting screw torque max 0.5 Nm  |
| Material: Housing         | Thermoplastic, black, UL 94V-0   |

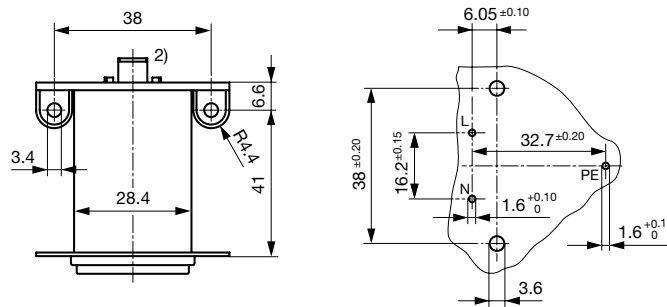
|                         |   |
|-------------------------|---|
| Appliance-Inlet/-Outlet | C14 acc. to IEC 60320,<br>UL 498 CSA C22.2 no. 42 (for cold conditions) pin-temperature 70 °C, 10A, Protection Class I  |
| Line Switch             | Rocker switch 1 or 2 pole, non-illuminated or illuminated red, acc. to IEC 61058-1<br><a href="#">Technical Details</a> |
| Line Filter             | Standard and Medical Version, IEC 60939, UL 1283, CSA C22.2 no. 8<br><a href="#">Technical Details</a>                  |
| MTBF                    | > 2'100'000 h acc. to MIL-HB-217 F  |

**Dimension**

Screw-on mounting



1) all pins



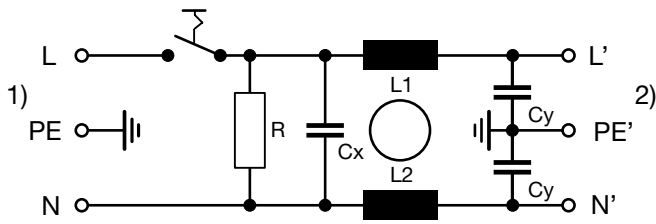
2) PE additionally as quick-connect terminal 6.3 x 0.8

**Technical Data of Filter-Components**

| Rated Current [A] | Filter-Type          | Inductances L [mH] | Capacitance CX [nF] | Capacitance CY [nF] | R [MΩ] |
|-------------------|----------------------|--------------------|---------------------|---------------------|--------|
| 1                 | Standard Version     | 2 x 10             | 100                 | 2.2                 | 1      |
| 2                 | Standard Version     | 2 x 4              | 100                 | 2.2                 | 1      |
| 4                 | Standard Version     | 2 x 1.5            | 100                 | 2.2                 | 1      |
| 6                 | Standard Version     | 2 x 0.8            | 100                 | 2.2                 | 1      |
| 10                | Standard Version     | 2 x 0.3            | 100                 | 2.2                 | 1      |
| 1                 | Medical Version (M5) | 2 x 10             | 100                 | -                   | 1      |
| 2                 | Medical Version (M5) | 2 x 4              | 100                 | -                   | 1      |
| 4                 | Medical Version (M5) | 2 x 1.5            | 100                 | -                   | 1      |
| 6                 | Medical Version (M5) | 2 x 0.8            | 100                 | -                   | 1      |
| 10                | Medical Version (M5) | 2 x 0.3            | 100                 | -                   | 1      |

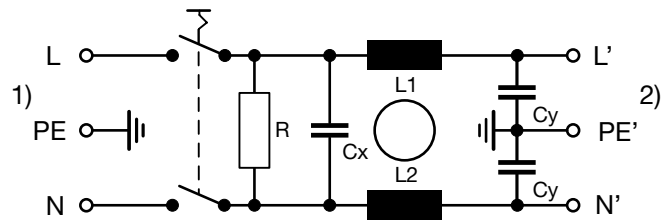
Diagrams

Standard filter 1-pole



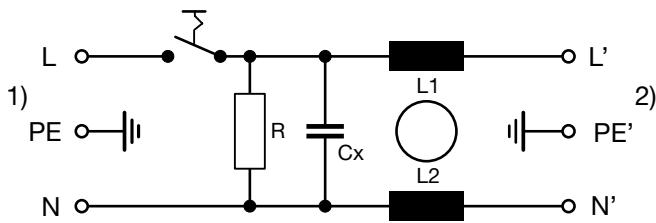
1) Line  
 2) Load

Standard filter 2-pole



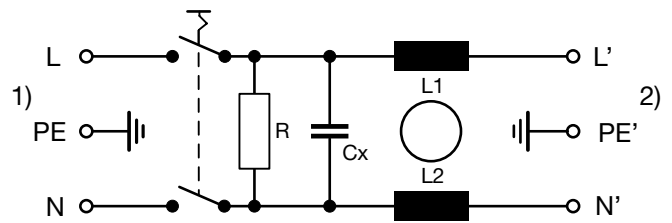
1) Line  
 2) Load

Medical filter 1-pole (M5)



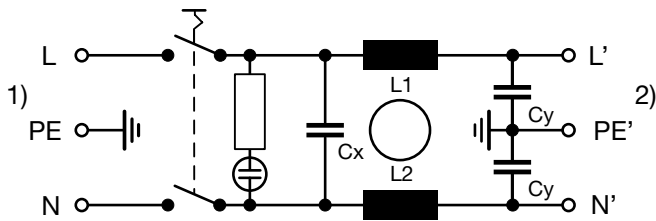
1) Line  
 2) Load

Medical filter 2-pole (M5)



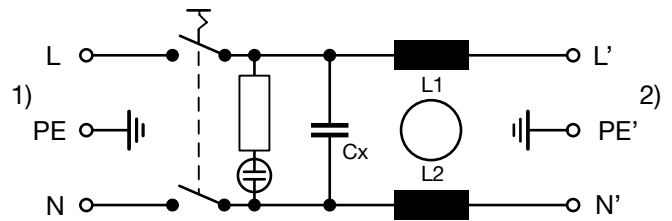
1) Line  
 2) Load

Standard filter 2-pole illuminated



1) Line  
 2) Load

Medical Filter 2-pole (M5) illuminated

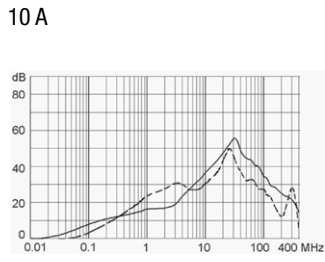
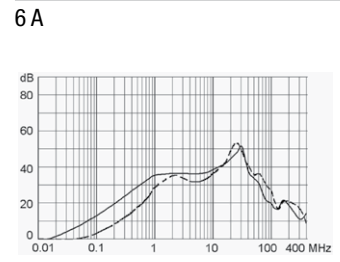
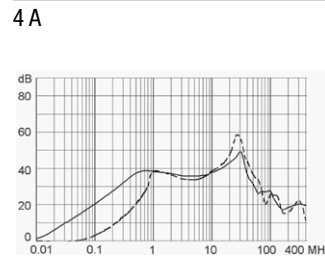
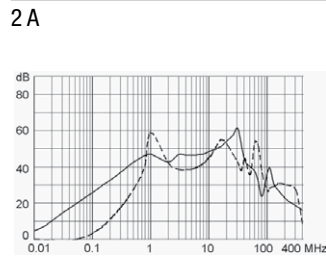
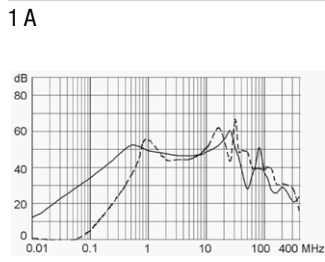


1) Line  
 2) Load

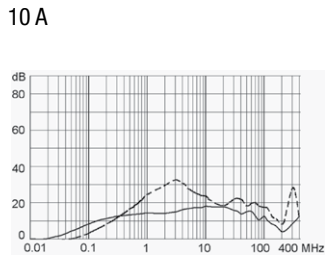
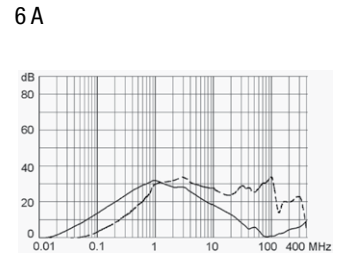
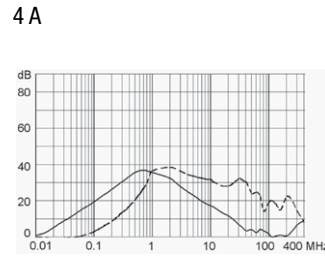
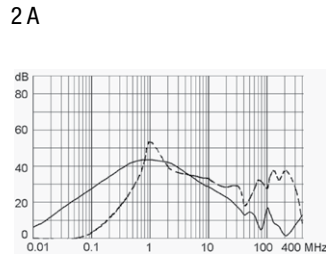
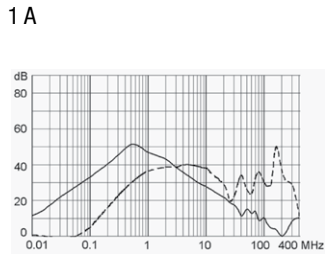
**Attenuation Loss**

Standard version

--- differential mode    \_\_\_\_ common mode



Medical version (M5)



**All Variants**

| Rated Current | Filter-Type      | Line Switch | Illumination | Color | Order Number  |
|---------------|------------------|-------------|--------------|-------|---------------|
| 1             | Standard Version | 1-pole      | -            | -     | DC22.1111.111 |
| 2             | Standard Version | 1-pole      | -            | -     | DC22.2111.111 |
| 4             | Standard Version | 1-pole      | -            | -     | DC22.4111.111 |
| 6             | Standard Version | 1-pole      | -            | -     | DC22.6111.111 |
| 10            | Standard Version | 1-pole      | -            | -     | DC22.9111.111 |
| 1             | Standard Version | 2-pole      | -            | -     | DC22.1121.111 |
| 2             | Standard Version | 2-pole      | -            | -     | DC22.2121.111 |
| 4             | Standard Version | 2-pole      | -            | -     | DC22.4121.111 |
| 6             | Standard Version | 2-pole      | -            | -     | DC22.6121.111 |
| 10            | Standard Version | 2-pole      | -            | -     | DC22.9121.111 |
| 1             | Standard Version | 2-pole      | ●            | red   | DC22.1123.111 |
| 2             | Standard Version | 2-pole      | ●            | red   | DC22.2123.111 |
| 4             | Standard Version | 2-pole      | ●            | red   | DC22.4123.111 |
| 6             | Standard Version | 2-pole      | ●            | red   | DC22.6123.111 |
| 10            | Standard Version | 2-pole      | ●            | red   | DC22.9123.111 |

| Rated Current | Filter-Type          | Line Switch | Illumination | Color | Order Number  |
|---------------|----------------------|-------------|--------------|-------|---------------|
| 1             | Medical Version (M5) | 2-pole      |              | -     | DC22.1221.111 |
| 2             | Medical Version (M5) | 2-pole      |              | -     | DC22.2221.111 |
| 4             | Medical Version (M5) | 2-pole      |              | -     | DC22.4221.111 |
| 6             | Medical Version (M5) | 2-pole      |              | -     | DC22.6221.111 |
| 10            | Medical Version (M5) | 2-pole      |              | -     | DC22.9221.111 |
| 1             | Medical Version (M5) | 2-pole      | ●            | red   | DC22.1223.111 |
| 2             | Medical Version (M5) | 2-pole      | ●            | red   | DC22.2223.111 |
| 4             | Medical Version (M5) | 2-pole      | ●            | red   | DC22.4223.111 |
| 6             | Medical Version (M5) | 2-pole      | ●            | red   | DC22.6223.111 |
| 10            | Medical Version (M5) | 2-pole      | ●            | red   | DC22.9223.111 |

Availability for all products can be searched real-time:<http://www.schurter.com/en/Stock-Check/Stock-Check-SCHURTER>

**Packaging unit** 10 Pcs

### Accessories

#### Description



[Cord retaining kits](#)  
Cord retaining strain relief

|              |           |
|--------------|-----------|
| Flat head, H | 4700.0008 |
|--------------|-----------|

### Mating Outlets/Connectors

#### Category / Description

#### [Appliance Outlet Overview complete](#)



|   |      |
|---|------|
| IEC Appliance Outlet F, Screw-on Mounting, Front Side, Solder Terminal                            | 4787 |
| IEC Appliance Outlet F, Snap-in Mounting, Front Side, Solder or Quick-connect Terminal            | 4788 |
| IEC Appliance Outlet F or H, Screw-on Mounting, Front Side, Solder, PCB or Quick-connect Terminal | 5091 |

[Appliance Outlet further types to DC22](#)

#### [Connector Overview complete](#)



|  |         |
|--|---------|
| 4782 Mounting: Power Cord, 3 x 1 mm <sup>2</sup> / 3 x 18 AWG, Cable, Connector: IEC C13     | 4782    |
| 4022 Mounting: Power Supply Cord, 3 x 1.5 mm <sup>2</sup> , Screw clamps, Connector: IEC C13 | 4022    |
| 4785 Mounting: Power Cord, 3 x 1 mm <sup>2</sup> / 3 x 18 AWG, Cable, Connector: IEC C13     | 4785    |
| 4300-06 Mounting: Power Cord, 3 x 1 mm <sup>2</sup> / 3 x 18 AWG, Cable, Connector: IEC C13  | 4300-06 |
| 4012 Mounting: Power Supply Cord, 3 x 1.5 mm <sup>2</sup> , Screw clamps, Connector: IEC C13 | 4012    |

[Connector further types to DC22](#)

...

## Mating Outlets/Connectors shuttered



[Power Cord Overview complete](#)

|   |           |
|---|-----------|
| VAC17KS, North America, 2.0 m, Connector C17, cord end: | 6051.2801 |
| VAC17KS, Europlug, 2.0 m, Connector IEC C17, cord end:  | 6051.2803 |
| VAC17KS, Europlug, 2.0 m, Connector IEC C17, cord end:  | 6051.2813 |
| VAC13KS, Overview, diverse Connector IEC C13, cord end: | VAC13KS   |

[Power Cord further types to DC22](#)

## X-ON Electronics

Largest Supplier of Electrical and Electronic Components

*Click to view similar products for [AC Power Entry Modules](#) category:*

*Click to view products by [Schurter](#) manufacturer:*

Other Similar products are found below :

[0098.0050](#) [6-1609987-9](#) [6167.0002](#) [7-6609955-2](#) [FN389-4-22](#) [FN9233ER-12-06](#) [FN9233S1-10-06](#) [FN9233S1-8-06](#) [FN9233S1B-8-06](#)  
[FN9233S1R-1-06](#) [FN9233S1R-12-06](#) [FN9233SB-1-06](#) [FN9233SB-12-06](#) [FN9233SB-8-06](#) [FN9233SR-10-06](#) [FN9233SR-3-06](#) [FN9244B-15-06](#)  
[HI](#) [FN9244EB-3-06](#) [FN9244EB-8-06](#) [FN9244ER-15-06](#) [FN9244ER-8-06](#) [FN9244ES1-8-06](#) [FN9244ESB-8-06](#) [FN9244EU-6-06](#)  
[FN9244R-12-06](#) [FN9244R-3-07](#) [FN9244R-8-06](#) [FN9244S1-10-06](#) [FN9244S1-12-06](#) [FN9244S1-3-06](#) [FN9244S1B-6-06](#) [FN9244S1R-3-06](#)  
[FN9244S-6-06](#) [FN9244SB-10-06](#) [FN9244SB-6-06](#) [FN9244SB-8-06](#) [FN9244SR-10-06](#) [FN9244SR-6-06](#) [FN9244U-3-06](#) [FN9244U-8-06](#)  
[FN9260A-6-06](#) [PE00SSSXB](#) [Fuse-H-EUR-1](#) [Fuse-H-USA-1](#) [PM00XD000](#) [PS0SSDBX0](#) [PS0SXSH3B](#) [A-0701-HT-H](#) [RAPC3FG](#) [15EJMS8](#)