

1 2 3 4 5 6 7 8

A

B

C

D

E

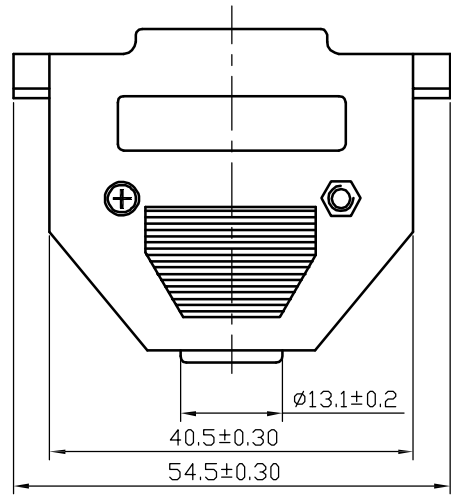
A

B

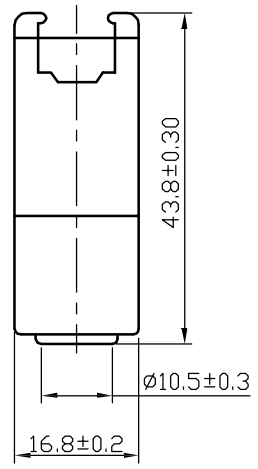
C

D

E

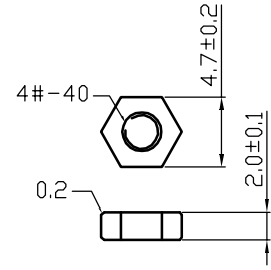


① 25P 塑膠本體

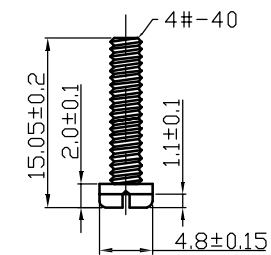


SPECIFICATIONS:
 Current rating: NONE
 Voltage rating: NONE
 Contact resistance: NONE
 Insulation resistance: 1000M ohm MIN
 Withstanding voltage: 1000V AC for one minute
 Operating temperature range: -40°C ~ +85°C

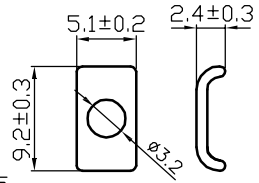
MATERIAL AND FINISH:
 Insulator: ABS or HIPS (UL94V-0)
 Contact: Copper Alloy
 Finish: Zn Plated or Cr Plated



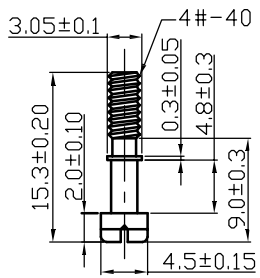
② 塑膠螺母(通用)



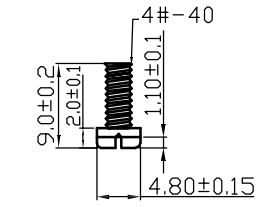
③ 塑殼螺絲(通用)



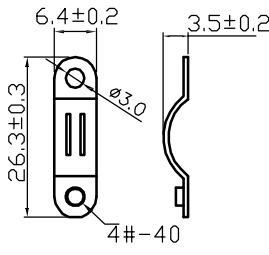
④ 卡片(通用)



⑤ 卡片螺絲(通用)



⑥ 線夾螺絲(通用)



⑦ 線夾(25Pin)

PART NO.

Z-SUB-B0*0-002*-** *

NO OF CONTACTS

- A=9PIN
- B=15PIN
- C=25PIN
- E=37PIN

FITTING PLATED

- N=NI
- P=COLOR Zn
- Q=BLUE Zn
- R=Cr³⁺

- MARK
- 0=NO MARK
- 2=NEXTRON MARK
- INSULATOR COLOR
- 0=BLACK
- 8=GREY
- L=Lvory White
- INSULATOR MATERIAL
- D=ABS, NO PLATED
- E=ABS, Cr PLATED
- H=HIPS, NO PLATED

UNITS ■mm □INCH		NAME: D-SUB HOOD 25P 塑膠殼及配件		NEXTRON NEXTRONICS ENGINEERING CORP.	
GENERAL TOLERANCES: (UNLESS SPECIFIED)		PART NO: R-SUBB0*0002*****		TITLE: CUSTOMER DWG	
	mm	INCH	APPD:	DWG NO: ** C	
4 PLACE	±**	±.**	CHKD:		
3 PLACE	±**	±.**	DRAWN: 陳惠枝 7/9'15	SCALE: 1/3	SHEET: 1/1
2 PLACE	±0.05	±.**		REV.:	A
1 PLACE	±0.1	±.**			
ANGULAR:	X°±2°	X°±**			

A	NEW RELEASED	7/9'15	
REV.	DESCRIPTION	DATE	APPD

X-ON Electronics

Largest Supplier of Electrical and Electronic Components

Click to view similar products for [D-Sub Standard Connectors](#) category:

Click to view products by [Nextronics](#) manufacturer:

Other Similar products are found below :

[DCM37S732N](#) [DAM15P500](#) [DEV09S364GTLF](#) [DEM09P032N](#) [DDM50P732N](#) [DAM15S332N](#) [173109-2218](#) [173109-2466](#) [173109-2436](#)
[173109-2435](#) [56F706-005-LI](#) [56F711-015](#) [015-0341-000](#) [015-0372-008](#) [015-8544-011](#) [017041-0005](#) [012-0515-000](#) [012-9507-034](#) [012-9507-114](#) [012-9534-001](#) [020745-0008](#) [609-25P](#) [M24308/2-23Z](#) [M243082310F](#) [M243082410F](#) [M243082411F](#) [M24308/4-21](#) [CT1A18-11PSA206](#)
[CT1N36-5SC](#) [CT2-16S-17PS](#) [CT2-20-15PCAU](#) [CT2-24-12PS](#) [CT2-24-28PSF127A206](#) [CT2-32-9PC](#) [CT6F9767-14-4-14S-5PC](#)
[CT6FA10SL-4PS](#) [CT7-18-10SC](#) [CT7-18-10SCAU](#) [CT7-18-12SCAU](#) [CT7-18-1PC](#) [CT7-18-1PCAU](#) [CT7-18-21SCAU](#) [M83513/01-FC](#)
[M83723/76W24619 L/C](#) [M85049/48-3-2F](#) [69001-865](#) [6STD09PCM99B70X](#) [6STD09SCT99S40X](#) [6STD15PCT99S40X](#)
[6STD15SCM99B30X](#)