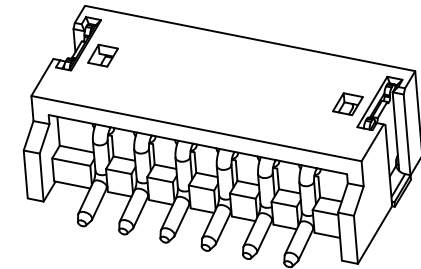


P.C.B LAYOUT

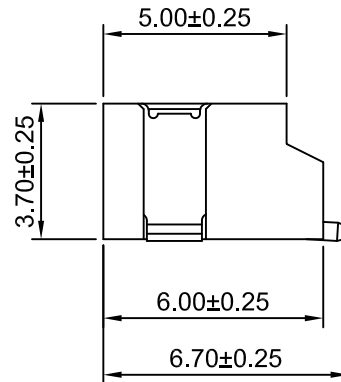
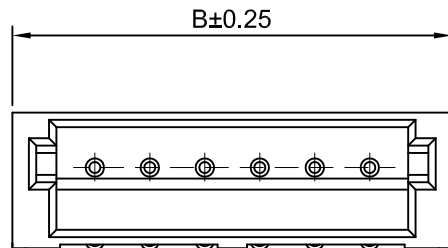


SPECIFICATIONS:

Current Rating: 2A AC,DC (AWG #24)
 Voltage Rating: 125V AC,DC
 Temperature Range: -25°C ~ +105°C
 Contact Resistance: 30mΩ Max.
 Insulation Resistance: 1000MΩ Min.
 Withstanding Voltage: 500V AC/minute
 Pin Material: Brass/Tin over Nickel
 Solder Tabs: Phosphor Bronze/Tin over Nickel
 Wafer: Nylon 6T,UL94V-0(Beige)

Ordering Information & Dimensions

Circuits	Dimensions(mm)		Circuits	Dimensions(mm)	
	A	B		A	B
2P	1.50	6.00	10P	13.50	18.00
3P	3.00	7.50	11P	15.00	19.50
4P	4.50	9.00	12P	16.50	21.00
5P	6.00	10.50	13P	18.00	22.50
6P	7.50	12.00	14P	19.50	24.00
7P	9.00	13.50	15P	21.00	25.50
8P	10.50	15.00	16P	22.50	27.00
9P	12.00	16.50			



Ordering Information:

A1501WR-S-XP - ***
 1 2

1.Part No.

2.Material:

(blank):Nylon 6T,UL94V-0

LCP:LCP,UL94V-0

REV	DESCRIPTION	DATE
A2	CHANGE THE Current Rating	2019.2.18
A1	Modify the material	2016.04.05
A0	NEW RELEASE	2005.05.10



CHANGJIANG CONNECTORS CO.,LTD.

Unit	Scale	Sheet
mm	5:1	1 of 1
Draw BY:	Approved :	
Tony Su	Jack Yin	

Title :

1.50mm PITCH

90° WAFER - SMT TYPE

DRAW NO : A1501WR-S-XP

REV A2

General Tolerance	
x.xx±0.25	PROJECT
x.xx±0.20	
x.xxx±0.15	

X-ON Electronics

Largest Supplier of Electrical and Electronic Components

Click to view similar products for [Headers & Wire Housings](#) category:

Click to view products by [Changjiang](#) manufacturer:

Other Similar products are found below :

[95000-104TRLF](#) [10135584-644402LF](#) [DF62W-EP2022PCA](#) [95000-106TRLF](#) [DF62W-2022SCA](#) [DF62W-EP2022PC](#) [2203348](#) [DF62W-2022SC](#) [1084018](#) [1029039](#) [1084017](#) [802-10-012-10-002000](#) [1112640](#) [1112639](#) [000-34000](#) [0009482033](#) [0009507031](#) [57102-S06-03LF](#) [57202-S52-04LF](#) [PCN6-15S-2.5E](#) [0039019024](#) [58102-G61-06LF](#) [582553-1](#) [0009508121](#) [0022285053](#) [0050291907](#) [018731A](#) [LY20-4P-DT1-P1E-BR](#) [02.125.8002.8](#) [60101931](#) [60598-1 \(Cut Strip\)](#) [M1625-3R/100](#) [61062-3](#) [61082-181009](#) [636-1427](#) [638009-1](#) [641938-9](#) [641991-4](#) [644168-1](#) [647662-1](#) [65039-019ELF](#) [65817-002LF](#) [65817-015LF](#) [65863-015LF](#) [66207-023LF](#) [67016-026LF](#) [67046-001LF](#) [67095-007LF](#) [67230-005LF](#) [68002-116](#)