

# SPECIFICATION FOR APPROVAL

CUSTOMER : \_\_\_\_\_

PRODUCT TYPE : SMD SEAM SEALING X'TAL 3.2×2.5

NOMINAL FREQ. : 25.000625MHz

TXC P/N : 7M25000146

REVISION : S1

CUSTOMER P/N : \_\_\_\_\_

PM / SALES : \_\_\_\_\_

DATE : \_\_\_\_\_

CUSTOMER SIGNATURE & Date \_\_\_\_\_

- (1) TXC requires one copy returned with signature and title of authorized individual that signifies acceptance of the attached specifications.
- (2) Orders received and accepted by TXC after return of signed copy of specification will be produced per these specifications.
- (3) Any changes to these specifications must be agreed upon by both parties and new revision of the Product Specification Sheet will be issued.
- (4) Any issuance of purchase order prior to consigning back the Approval page of "Specification Sheets" from customers will be regarded as the agreement on the contents of these specifications.

**MSL:Level 1**  
**RoHS Compliant**

# PRODUCT SPECIFICATION SHEET

PRODUCT TYPE : SMD SEAM SEALING X'TAL 3.2×2.5

---

NOMINAL FREQ. : 25.000625MHz


---

TXC P/N : 7M25000146

---

REVISION : S1

---

| PE/RD  | QA | MFG |
|--|----|-----|
| <br>Robin Huang |    |     |
| 3-Mar-16   |    |     |

**NOTE:**

(1)The green product standard set by TXC is based upon the international standards. Related information is publicly described on the TXC's Website, and updated regularly. The document is compliant with the latest green product quality system directives at the time.

(2)Revision "Sx" is for engineering samples only. PE/RD's approval required.

(3)Revision "Ax" is production ready. PE, QA and MFG's approval required

**MSL:Level 1**  
**RoHS Compliant**



## Spec Sheet Contents

| No. | Content   | Page  |
|-----|---|-------|
| 1   | ELECTRICAL SPECIFICATIONS                         | P.3   |
| 2   | DIMENSIONS  | P.4   |
| 3   | MARKING   | P.4   |
| 4   | FACTORY LOCATION                                  | P.4   |
| 5   | SUGGESTED REFLOW PROFILE& MANUAL SOLDER CONDITION | P.4   |
| 6   | STRUCTURE ILLUSTRATION                            | P.5   |
| 7   | EMBOSS CARRIER TAPE & REEL                        | P.6   |
| 8   | PACKING   | P.7   |
| 9   | RELIABILITY SPECIFICATIONS                        | P.8~9 |

**■ ELECTRICAL SPECIFICATIONS**

**Standard atmospheric conditions**

Unless otherwise specified, the standard range of atmospheric conditions for making measurement and tests are as follow:

- Ambient temperature : 25±5°C
- Relative humidity : 40%~70%

If there is any doubt about the results, measurement shall be made within the following limits:

- Ambient temperature : 25±3°C
- Relative humidity : 40%~70%

**Measure equipment**

Electrical characteristics measured by S&A250B or equivalent.

**Crystal cutting type**

The crystal is using AT CUT (thickness shear mode).

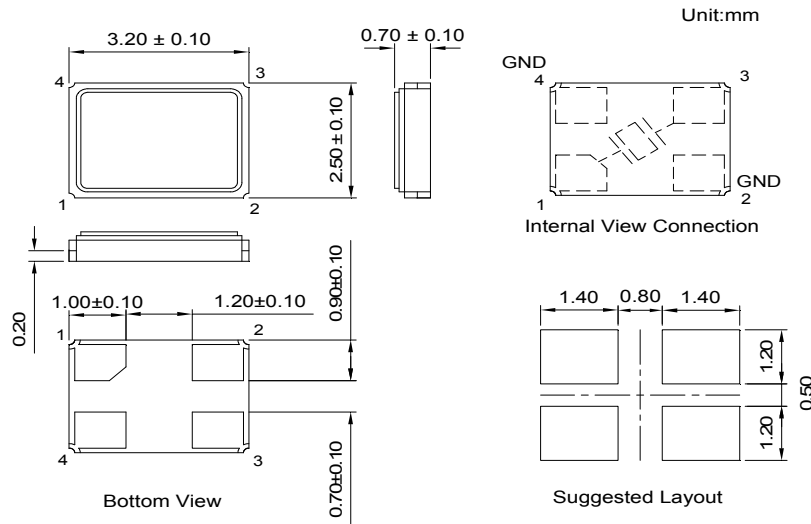
**Unit Weight:**

0.018±0.001 g/pcs

|    | Parameters                | Symbol | Electrical Spec. |      |      |       | Notes                                       |
|----|---------------------------|--------|------------------|------|------|-------|---|
|    |                           |        | Min.             | Typ. | Max. | Units |   |
| 1  | Nominal Frequency         | FL     | 25.000625        |      |      | MHz   | -   |
| 2  | Oscillation Mode          | -      | Fundamental      |      |      | -     | -   |
| 3  | Load Capacitance          | CL     | 18               |      |      | pF    | -   |
| 4  | Frequency Tolerance       | -      | ±10              |      |      | ppm   | at 25 °C ± 3 °C                             |
| 5  | Frequency Stability       | -      | ±20              |      |      | ppm   | Over Operating Temp. Range (Reference 25°C) |
| 6  | Operating Temperature     | -      | -40              | ~    | 85   | °C    | -   |
| 7  | Aging                     | -      | ±3               |      |      | ppm   | 1st Year                                    |
| 8  | Drive Level               | DL     | -                | 10   | 100  | uW    | -   |
| 9  | Effective Resistance Rr   | Rr     | -                | -    | 50   | Ω     | -   |
| 10 | Shunt Capacitance C0      | C0     | -                | -    | 3    | pF    | -   |
| 11 | Insulation Resistance     | -      | 500              | -    | -    | MΩ    | at DC 100V                                  |
| 12 | Storage Temperature Range | -      | -55              | ~    | 125  | °C    | -   |

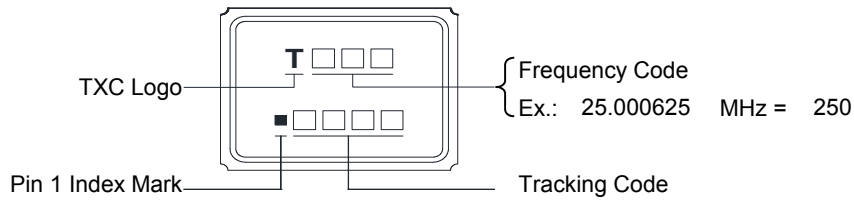
**■ DIMENSIONS**

(Unit:mm)



\*Coplanarity of solderable areas Camber 0.10 mm Max

**■ MARKING**

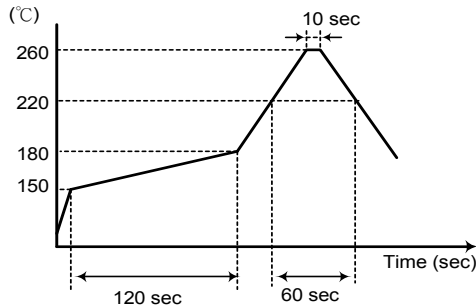


Production Location: Taiwan, China(Ningbo), China(Chungking).

**■ SUGGESTED REFLOW PROFILE**

Solder melting point : 220 ± 10 °C, 60 sec. Min.

Peak Temperature: 260 ± 5 °C, 10 sec. Max.



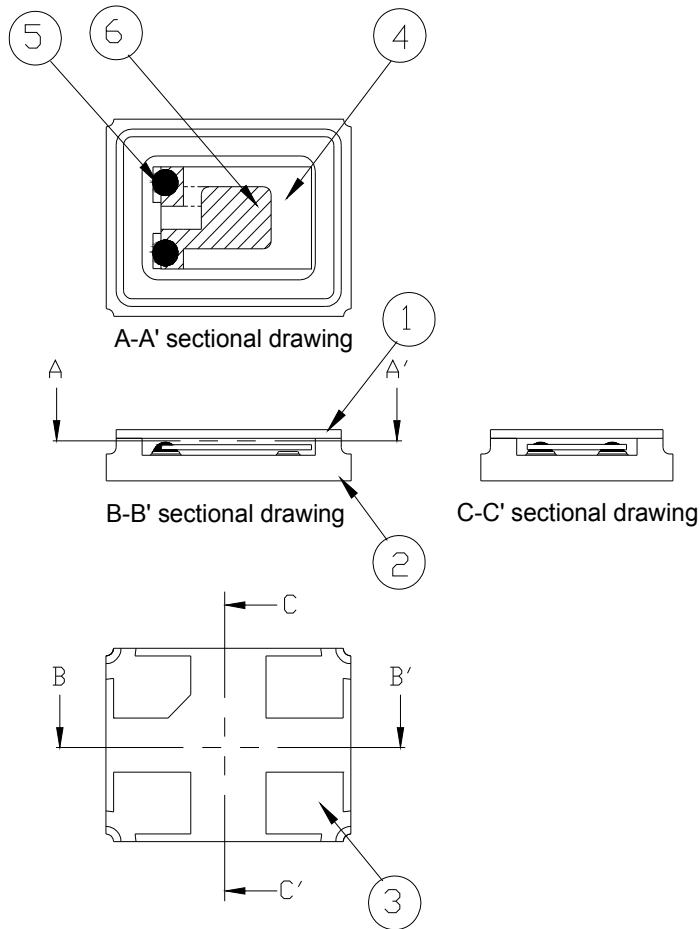
**■ SUGGESTED MANUAL SOLDER CONDITION**

Temperature: 350 ± 10 °C

Time: 3 sec.

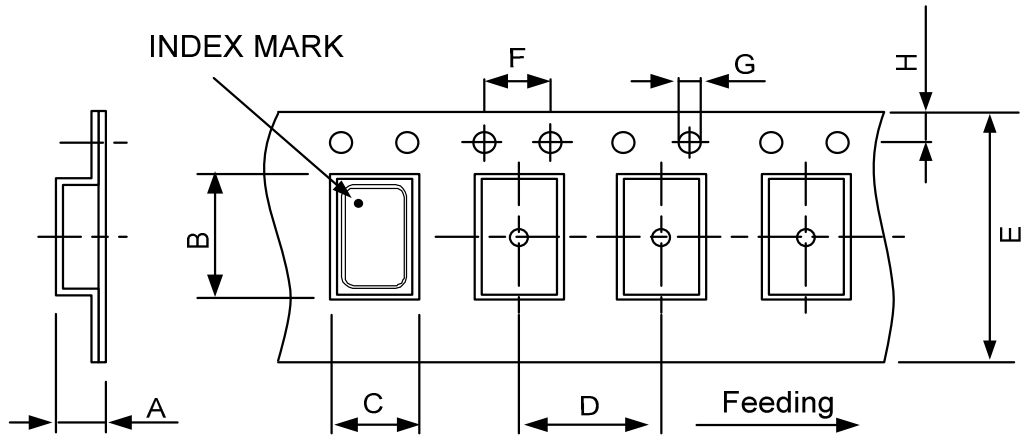
Re-solder times: twice

**■ STRUCTURE ILLUSTRATION**



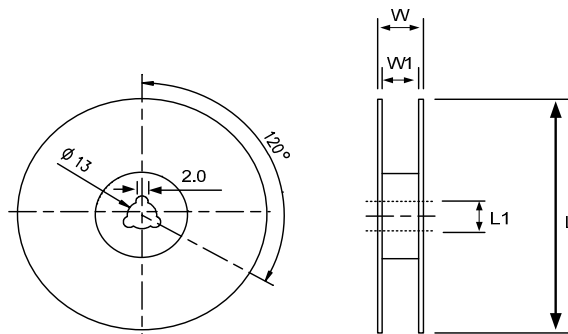
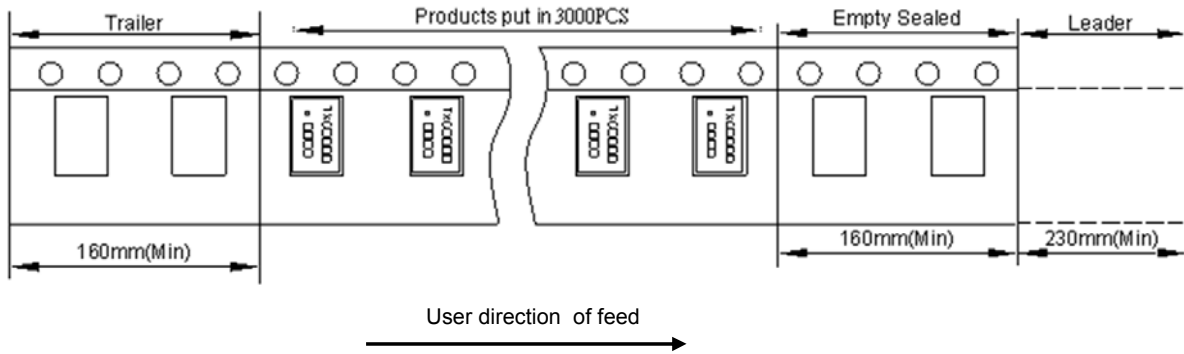
| NO | COMPONENTS          | MATERIALS   | FINISH/SPECIFICATIONS                             |
|----|---------------------|---|---|
| 1  | Lid                 | Kovar (Fe/Co/Ni)  | -   |
| 2  | Package             | Ceramic (Al <sub>2</sub> O <sub>3</sub> ) + Kovar (Fe/Co/Ni)+ Ag/Cu | -   |
| 3  | PAD                 | Au  | Tungsten metalize<br>+ Ni plating<br>+ Au plating |
| 4  | Crystal blank       | SiO <sub>2</sub>  | -   |
| 5  | Conductive adhesive | Resin+Ag  | -   |
| 6  | Electrode           | Noble Metal   | -   |

■ **EMBOSS CARRIER TAPE & REEL**



| DIMENSIONS | A         | B         | C         | D         | E         | F         | G         | H         |             |
|------------|-----------|-----------|-----------|-----------|-----------|-----------|-----------|-----------|-------------|
|            | 1.65±0.10 | 3.40±0.10 | 2.70±0.10 | 4.00±0.10 | 8.00±0.20 | 4.00±0.10 | 1.55±0.10 | 1.75±0.10 | (UNIT : mm) |

REMARK :



| DIMENSIONS | L        | L1      | W         | W1     |             |
|------------|----------|---------|-----------|--------|-------------|
|            | 178±1.00 | 13±0.50 | 11.5±0.20 | 8±0.10 | (UNIT : mm) |



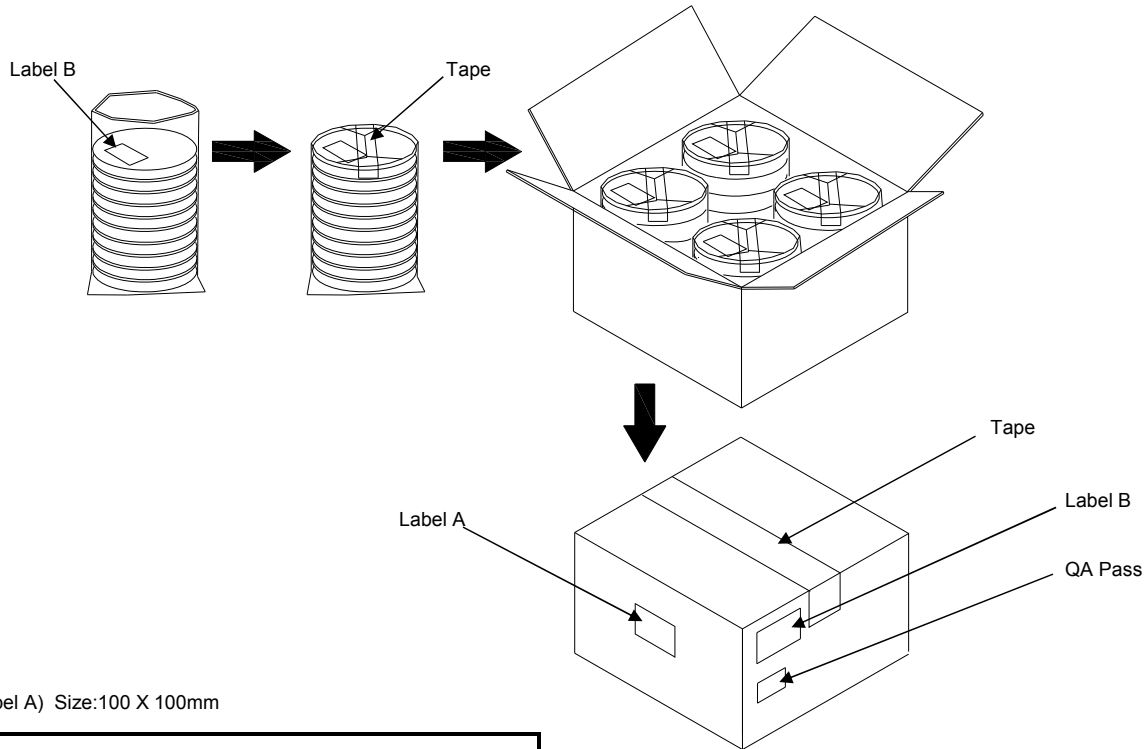
**PACKING**

Reel Quantity :

- 1. Reel X 6 (6 Reels)
- 2. Reel X 12 (12 Reels)
- 3. Reel X 25 (12 Reels + 13 Reels)
- 4. Reel X 50 ( 12 Reelsx2 + 13 Reelsx2 )

Box Size:

- 1. L200 X W200 X H140mm
- 2. L200 X W200 X H250mm
- 3. L400 X W200 X H250mm
- 4. L400 X W400 X H280mm



(Label A) Size:100 X 100mm

|                                 |                 |
|---------------------------------|-----------------|
| <h1 style="margin: 0;">TXC</h1> |                 |
| Inv No:                         | 00096815        |
| Po No:                          | 21106326- 24- 1 |
| Part No:                        | □□□□□□□□        |
| Qty:                            | 40000 PCS       |
| C/No:                           | 157- 44         |

(Label B) Size:80 X 40mm

|                 |             |            |
|-----------------|-------------|------------|
| TXC CORPORATION |             | QA PASS    |
| DATE CODE:      | QTY:        | 2011/09/02 |
| LOT NO:         | <b>RoHS</b> |            |
| PART NO:        | <b>HF</b>   |            |
| FREQ:           |             |            |

**[STORAGE]**

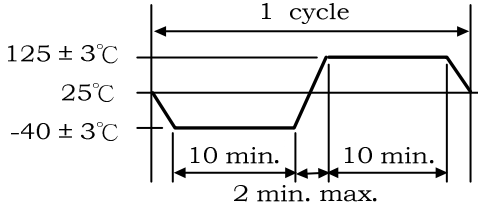
- 1. Don't be caught in the rain.
- 2. The storage environment shall be 5°C ~40°C temperature and 30% ~ 75%RH humidity and free from the sun shine.
- 3. If customers have special requirements, we can paste labels according to it.

**RELIABILITY SPECIFICATIONS**

1. Mechanical Endurance

| No. | Test Item        | Test Methods  | Test Criteria |
|-----|------------------|---|---------------|
| 1.1 | Drop Test        | 150 cm height, 3 times on concrete floor .  | A . C         |
| 1.2 | Mechanical Shock | Device are shocked to half sine wave ( 1000 G ) three mutually perpendicular axes each 3 times. 0.5 ms duration time                                  | A . C         |
| 1.3 | Vibration        | Frequency range 10 ~ 2000 Hz<br>Amplitude 1.52 mm/20G<br>Sweep time 20 minutes<br>Perpendicular axes each test time 4 Hrs<br>(Total test time 12 Hrs) | A . C         |
| 1.4 | Solderability    | Temperature 245 °C ± 5°C<br>Immersing depth 0.5 mm minimum<br>Immersion time 5 ± 1 seconds<br>Flux Rosin resin methyl alcohol solvent ( 1 : 4 )       | E             |

2. Environmental Endurance

| No. | Test Item                    | Test Methods   | Test Criteria |
|-----|------------------------------|--|---------------|
| 2.1 | Resistance To Soldering Heat | Pre-heat temperature 125 °C<br>Pre-heat time 60 ~ 120 sec.<br>Test temperature 260 ± 5 °C<br>Test time 10 ± 1 sec.                         | B . C . D     |
| 2.2 | High Temp. Storage           | + 125 °C ± 3 °C for 500 ± 12 Hrs   | B . C . D     |
| 2.3 | Low Temp. Storage            | - 40 °C ± 3 °C for 500 ± 12 Hrs  | B . C . D     |
| 2.4 | Temperature cycle            | Total 100 cycles of the following temperature cycle<br> | B . C . D     |
| 2.5 | High Temp & Humidity         | 85°C ± 3°C , RH 85% , 500 Hrs  | B . C . D     |

**RELIABILITY SPECIFICATIONS**

| Specifications |   |
|----------------|---|
| A              | Frequency change: Within $\pm 5$ ppm or in customer's specification.  |
| B              | Frequency change: Within $\pm 10$ ppm or in customer's specification.   |
| C              | Equivalent series resistance(E.S.R) change: Within $\pm 15\%$ or $10\Omega$ (larger value).                               |
| D              | After conditioning , quartz crystal units shall be subjected to standard atmospheric conditions for 2 hour, and measured. |
| E              | Minimum 95% of immersed terminal shall be covered with new uniform solder.  |

**Measurement condition**

Electrical characteristics measured by S&A250B or equivalent.

## X-ON Electronics

Largest Supplier of Electrical and Electronic Components

*Click to view similar products for [Crystals category](#):*

*Click to view products by [TXC Corporation manufacturer](#):*

Other Similar products are found below :

[CS325S24000000ABJT](#) [718-13.2-1](#) [MC405 32.0000K-R3:PURE SN](#) [FC-135R 32.7680KF-A3](#) [7A-40.000MAAE-T](#) [7B-27.000MBBK-T](#)  
[FL2000085](#) [9B-15.360MBBK-B](#) [9C-7.680MBBK-T](#) [ASH7K-32.768KHZ](#) [AT-41.600MAGQ-T](#) [BTD1062E05A-513](#) [LFXTAL066198Cutt](#)  
[9C-14.31818MBBK-T](#) [FA-238 50.0000MB30X-K3](#) [FC-12M 32.7680KA-AC3](#) [SSPT7F-9PF20-R](#) [FX325BS-38.88EEM1201](#)  
[LFXTAL065253Cutt](#) [LFXTAL066431Cutt](#) [XT9S20ANA14M7456](#) [XT9SNLANA16M](#) [646G-24-2](#) [7A-24.576MBBK-T](#) [7B-30.000MBBK-T](#)  
[WX26-32.768K-6PF](#) [9B-14.31818MBBK-B](#) [CD1AM](#) [7B-25.000MAAE-T](#) [7A-14.31818MBBK-T](#) [6504-202-1501](#) [6526-202-1501](#) [FA-118T](#)  
[27.1200MB50P-K0](#) [FC-135R 32.7680KA-A3](#) [ABM12-104-37.400MHZT](#) [ABLS-10.000MHZ-D3W-T](#) [BTJ112E01E-513](#) [BTJ722K01C-7067](#)  
[BTL-20-513](#) [TSX-3225 24.0000MF15X-AC](#) [TSX-3225 16.0000MF18X-AC](#) [BTJ120E02C](#) [BTL-12-513](#) [7A-10.000MBBK-T](#) [7A-](#)  
[11.0592MBBK-T](#) [ABM12-103-24.000MHZT](#) [CS325S25000000ABJT](#) [ABM3B-25.000MHZ-B2-X-T](#) [FC-135 32.7680KA-A5](#) [FX0800015](#)