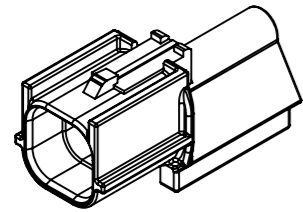
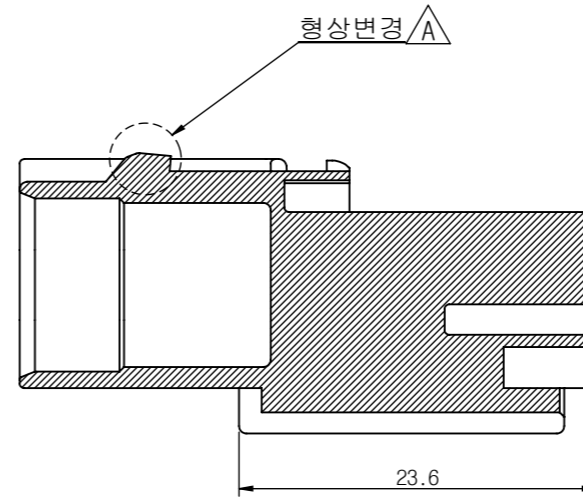
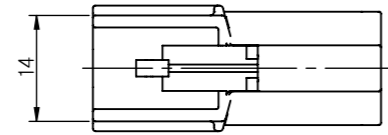


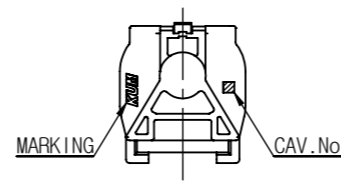
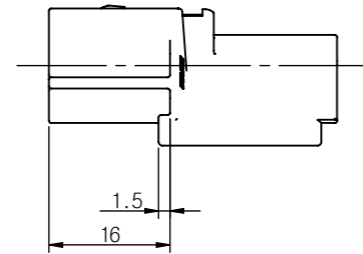
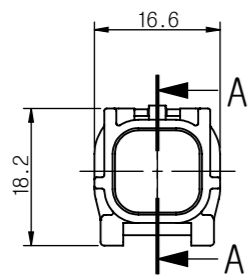
① AWP01M-B



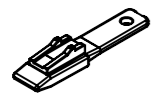
ISO VIEW(1/1)



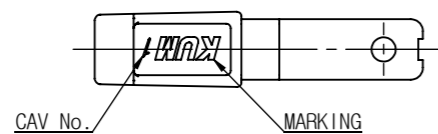
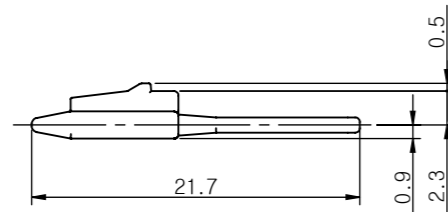
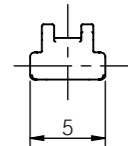
SECTION A-A



② F/H AWP01M-L



ISO VIEW



- 주 기 -

1. 사용상 유해한 흠, BURR등이 없을 것.
2. 명시되지 않은 공차는 일반공차에 준할 것.
3. CAV. No. 및 MARKING은 당사규격에 준하여 각인할 것.

4. ASSY 부품

1) FRONT HOLDER:HP411-01040

2) TERMINAL

적용 전선(SQ)	PART NAME	PART NO.
CHFUS 0.22	AWP-M-SS	TP131-00400
AESSX(F) 0.3~0.5	AWP-M-S	TP131-00100
AESSX(F) 0.75~1.25	AWP-M-M	TP131-00200

3) WIRE SEAL

적용 전선 표준사양경	PART NAME	PART NO.
Φ0.9	W/S AWP-0.9S(MB)	EB010-01140
Φ1.4	W/S AWP-1.4S(BR)	EB010-01050
Φ1.9	W/S AWP-1.9S(GN)	EB010-01030
Φ2.3	W/S AWP-2.3S(GY)	EB010-01120
Φ2.7	W/S AWP-2.7S(OR)	EB010-01100
-	W/S AWP-V(R)	EB010-01060

5. 본 부품은 방수형 CONNECTOR 임.

GENERAL TOLERANCE							
	10MAX	50MAX	100MAX	150MAX	200MAX	200VR	ANGLE
A	±0.2	±0.3	±0.5	±0.8	±1.0	±1.4	±30'

②	F/H AWP01M-L	HP411-01040	BLUE	PBT			
①	AWP01M-B	HP401-01020	BLACK	PBT			
NO.	PART NAME	PART No.	COLOR	MATERIAL			
	THIRD ANGLE PROJECTION	A	2/1(1/1)	LSH	LSH	KNJ	CJW
	TOLERANCE	SCALE	DESIGN	DRAWN	CHECKED	APPROVED	

CJW	13.08.07	E013-0055	△A	형상 변경 (1개소)	PYI
CJW	12.09.05	E010-0103	△-	신 규	LDW
승인	DATE	NOTE No.	SYM	ALTERATION	담당

DRAWING NAME		AWP01M-B			
DRAWING No.		HP401-01020-C01A			

**KUM** 케이유엠

## X-ON Electronics

Largest Supplier of Electrical and Electronic Components

*Click to view similar products for [Terminal Block Tools & Accessories](#) category:*

*Click to view products by [KUM](#) manufacturer:*

Other Similar products are found below :

[1029563](#) [00171430102](#) [00171420102](#) [014415](#) [CSTSPC1-2](#) [9-1437653-4](#) [928358-1](#) [QC209/J](#) [HCL10-6](#) [1437403-6](#) [1437403-9](#) [1437403-8](#)  
[147832-1](#) [EC0037-000](#) [MT2/H--](#) [MT2/H-32](#) [MT6/H-N](#) [MT6/V-GRND](#) [MT8/H-101-110](#) [BB2-09BF](#) [EP2.5/4UN/BG](#) [1707755](#) [1735590](#)  
[1755480](#) [1760336](#) [BO3-02](#) [1789281](#) [1840227](#) [1840230](#) [1893164](#) [2-1437402-1](#) [2-1437644-9](#) [JB2-09/J](#) [2202307](#) [2204082](#) [2302463](#) [2305949](#)  
[2310581](#) [8TK2-24](#) [91.201.1](#) [L2U2](#) [2778.0](#) [2901107](#) [2901123](#) [2901699](#) [2MP/J](#) [2MV-06](#) [1705126](#) [F03-25](#) [1810532](#)