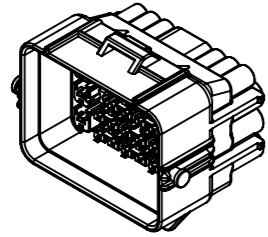
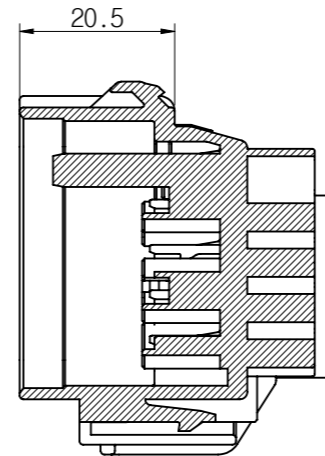
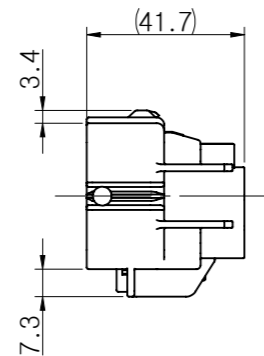
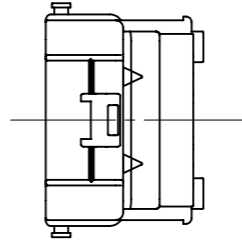
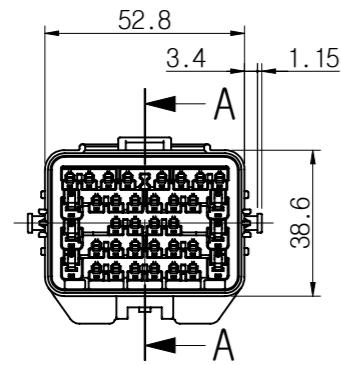


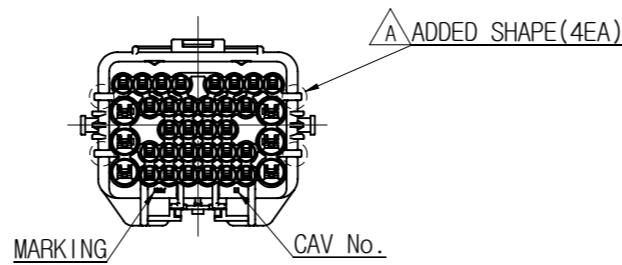
① 06011WP HY36M-B



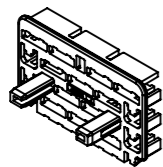
ISO VIEW



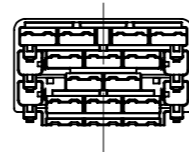
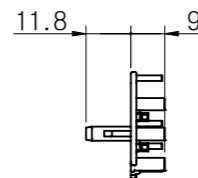
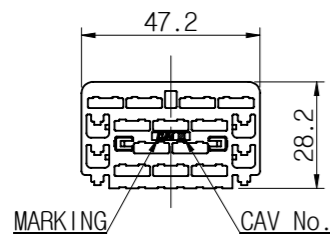
SECTION A-A(1/1)



② F/H 06011WP HY36M-OR



ISO VIEW



- NOTE -

- BEFORE USING, CHECK THE HARMFUL CRACK, BURR, ETC.
- GENERAL TOLERANCES - SEE BELOW.
- MARKING & CAV No. BY AS GENERAL RULE OF KUM
- ASSY PART

- FRONT HODLER : HP651-36100
- CONNECTOR CLIP : GC110-03020
- TERMINAL

| Application Wire(Sq) | PART NAME | PART No |
|----------------------|-----------------|-------------|
| 0.3 ~ 0.5 SQ | TML NWP-M-S | TP161-00100 |
| 0.75 ~ 1.25 SQ | TML NWP-M-M | TP161-00200 |
| 2.0 ~ 3.0 SQ | TML NWP-M-L | TP161-00300 |
| 0.3 ~ 0.5 SQ | TML NWP-M-S-Au | TP161-00110 |
| 0.75 ~ 1.25 SQ | TML NWP-M-M-Au | TP161-00210 |
| 2.0 ~ 3.0 SQ | TML NWP-M-L-Au | TP161-00310 |
| 0.22 SQ | TML AWP-M-SS | TP131-00400 |
| 0.3 ~ 0.5 SQ | TML AWP-M-S | TP131-00100 |
| 0.75 ~ 1.25 SQ | TML AWP-M-M | TP131-00200 |
| 0.22 SQ | TML AWP-M-SS-Au | TP131-00410 |
| 0.3 ~ 0.5 SQ | TML AWP-M-S-Au | TP131-00110 |
| 0.75 ~ 1.25 SQ | TML AWP-M-M-Au | TP131-00210 |

4) Wire Seal

| Insulation Nominal Diameter | PART NAME | PART No |
|-----------------------------|------------------|-------------|
| Φ1.4~Φ1.8 | W/S NWP-3.6S(R) | EM010-00060 |
| Φ1.9~Φ2.2 | W/S NWP-2.8S(MB) | EM010-00140 |
| Φ2.3~Φ2.7 | W/S NWP-2.3S(GY) | EM010-00120 |
| Φ2.8~Φ3.3 | W/S NWP-1.9S(GN) | EM010-00030 |
| Φ3.6~Φ4.0 | W/S NWP-1.4S(OR) | EM010-00100 |
| CLOSED SEAL | W/S NWP-V(BR) | EM010-00050 |
| Φ0.9~Φ1.3 | W/S AWP 0.9S(MB) | EB010-01140 |
| Φ1.4~Φ1.8 | W/S AWP 1.4S(BR) | EB010-01050 |
| Φ1.9~Φ2.2 | W/S AWP 1.9S(GN) | EB010-01030 |
| Φ2.3~Φ2.6 | W/S AWP 2.3S(GY) | EB010-01120 |
| Φ2.7~Φ2.9 | W/S AWP 2.7S(OR) | EB010-01100 |
| CLOSED SEAL | W/S AWP-V(R) | EB010-01060 |

5. THIS PART IS WATERPROOF CONNECTOR.

| APV | DATE | NOTE No. | SYM | ALTERATION | DWN |
|-----|----------|-----------|-----|-------------------|-----|
| CJW | 16.07.29 | E016-0313 | △ | ADDED SHAPES(4EA) | LJW |
| CJW | 14.08.27 | E012-0211 | △ | RELEASED | LDW |

| NO. | PART NAME | PART No. | COLOR | MATERIAL |
|-----|----------------------|-------------|--------|----------|
| ② | F/H 06011WP HY36M-OR | HP651-36100 | ORANGE | PBT |
| ① | 06011WP HY36M-B | HP641-36020 | BLACK | PBT |

| | |
|--------------|------------------|
| DRAWING NAME | 06011WP HY36M-B |
| DRAWING No. | HP641-36020-C01A |

| GENERAL TOLERANCE | | | | | | | |
|-------------------|-------|-------|--------|--------|--------|-------|-------|
| | 10MAX | 50MAX | 100MAX | 150MAX | 200MAX | 200VR | ANGLE |
| A | ±0.2 | ±0.3 | ±0.5 | ±0.8 | ±1.0 | ±1.4 | ±30' |

| | | | | | | |
|------------------------|---|----------|--------|-------|---------|----------|
| THIRD ANGLE PROJECTION | A | 1/2(1/1) | LDW | LDW | KNJ | CJW |
| TOLERANCE | | SCALE | DESIGN | DRAWN | CHECKED | APPROVED |

KUM 케이유엠

X-ON Electronics

Largest Supplier of Electrical and Electronic Components

Click to view similar products for [Terminal Block Tools & Accessories](#) category:

Click to view products by [KUM](#) manufacturer:

Other Similar products are found below :

[1029563](#) [00171430102](#) [00171420102](#) [014415](#) [CSTSPC1-2](#) [9-1437653-4](#) [928358-1](#) [QC209/J](#) [HCL10-6](#) [1437403-6](#) [1437403-9](#) [1437403-8](#)
[147832-1](#) [EC0037-000](#) [MT2/H--](#) [MT2/H-32](#) [MT6/H-N](#) [MT6/V-GRND](#) [MT8/H-101-110](#) [BB2-09BF](#) [EP2.5/4UN/BG](#) [1707755](#) [1735590](#)
[1755480](#) [1760336](#) [BO3-02](#) [1789281](#) [1840227](#) [1840230](#) [1893164](#) [2-1437402-1](#) [2-1437644-9](#) [JB2-09/J](#) [2202307](#) [2204082](#) [2302463](#) [2305949](#)
[2310581](#) [8TK2-24](#) [91.201.1](#) [L2U2](#) [2778.0](#) [2901107](#) [2901123](#) [2901699](#) [2MP/J](#) [2MV-06](#) [1705126](#) [F03-25](#) [1810532](#)