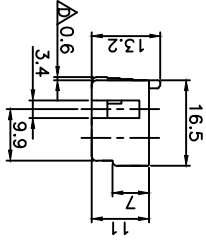
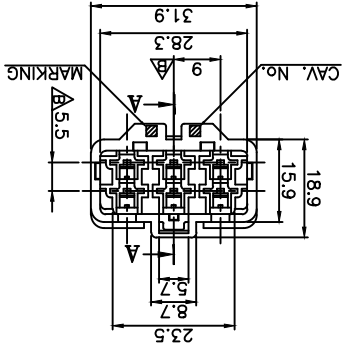


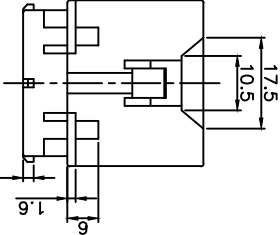
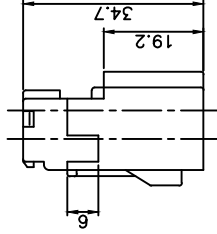
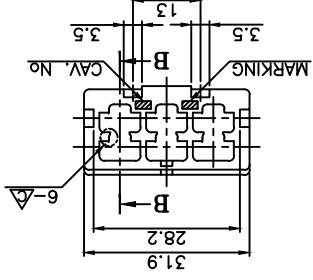
A	± 0.2	± 0.3	± 0.5	± 0.8	± 1.0	± 1.4	± 30°
	10MAX	50MAX	100MAX	150MAX	200MAX	200V/R	ANGLE
GENERAL TOLERANCE							



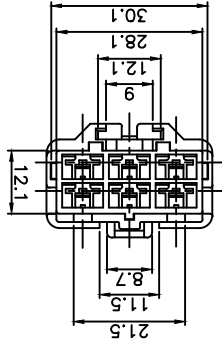
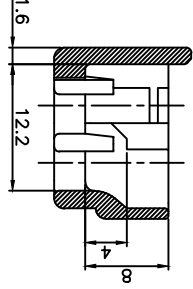
③④⑤ R/H BDS006P



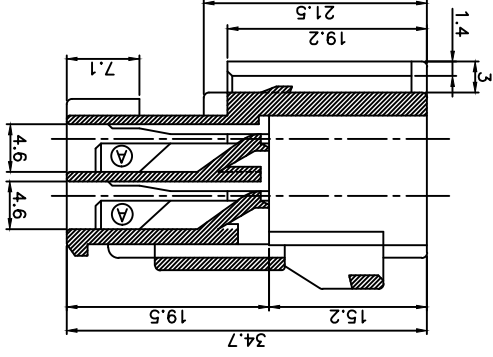
①② CONN. DSD06MP



SECTION B-B(2/1)



SECTION A-A(2/1)



No.	PART NAME	PART No.	COLOR	MATERIAL	THIRD	TOLERANCE	SCALE	DESIGN	DRAWN	CHECKED	APPROVED
					ANGLE						
①	CONN. DSD06MP-W	PH772-06010	WHITE	PP	A	-	-	JSJ	LSJ		CJM
②	CONN. DSD06MP-B	PH772-06020	BLACK	PP							
③	R/H BDS006P-GY	PH780-06720	GRAY	PP							
④	R/H BDS006P-L	PH780-06640	BLUE	PP							
⑤	R/H BDS006P-B	PH780-06620	BLACK	PP							

승인	DATE	NOTE No.	SYM	ALTERATION	담당
CJM	94.07.25	-	-	신규	KKL
CJM	95.01.06	-	A	형상추가	KKL
CJM	02.07.03	-	B	치수추가(2개소)	KMH
CJM	03.12.12	AH03079	C	형상변경	SSJ
KNJ	06.04.25	AH05089	D	형상변경 및 치수추가(1개소)	LSJ

①	CONN. DSD06MP-W	PH772-06015-C010
②	CONN. DSD06MP-W(L) ASSY	

KUM 케이엠											
---------	--	--	--	--	--	--	--	--	--	--	--

- 사용상 유해한 홀, BURR등이 없을 것.
- 열쇠되지 않은 공차는 일반공차에 준할 것.
- CAV. No. 및 MARKING은 당사규격에 준하여 라인할 것.
- 적용 TERMINAL

PART NAME	PART NO.	적용 견선(SO)
DSD-M-S	MT021-23000	AV,AVS,AVSS 0.3-0.5
DSD-M-S-SH	MT021-23030	
DSD-M-M	MT021-23200	AV,AVS,AVSS 0.65-2
DSD-M-M-SH	MT021-23230	
DSD-M-L	MT021-23300	AV,AVS 3
DSD-M-L-SH	MT021-23330	

3. ASSY PART NAME,NO.

ASSY PART NAME	ASSY PART NO.	①	②	③	④	⑤
CONN. DSD06MP-W(L) ASSY	PH772-06015	●				
CONN. DSD06MP-W(R) ASSY	PH772-06016		●			
CONN. DSD06MP-W(GY) ASSY	PH772-06017			●		
CONN. DSD06MP-W(L) ASSY	PH772-06025				●	
CONN. DSD06MP-B(R) ASSY	PH772-06026					●
CONN. DSD06MP-B(GY) ASSY	PH772-06027					●

4. 본 부품은 비방수형 CONNECTOR임.

## X-ON Electronics

Largest Supplier of Electrical and Electronic Components

*Click to view similar products for [Headers & Wire Housings](#) category:*

*Click to view products by [KUM](#) manufacturer:*

Other Similar products are found below :

[95000-104TRLF](#) [10135584-644402LF](#) [DF62W-EP2022PCA](#) [95000-106TRLF](#) [DF62W-2022SCA](#) [DF62W-EP2022PC](#) [2203348](#) [DF62W-2022SC](#) [1084018](#) [1029039](#) [1084017](#) [802-10-012-10-002000](#) [1112640](#) [1112639](#) [000-34000](#) [0009482033](#) [0009507031](#) [57102-S06-03LF](#) [57202-S52-04LF](#) [PCN6-15S-2.5E](#) [0039019024](#) [58102-G61-06LF](#) [582553-1](#) [0009508121](#) [0022285053](#) [0050291907](#) [018731A](#) [LY20-4P-DT1-P1E-BR](#) [02.125.8002.8](#) [60101931](#) [60598-1 \(Cut Strip\)](#) [M1625-3R/100](#) [61062-3](#) [61082-181009](#) [636-1427](#) [638009-1](#) [641938-9](#) [641991-4](#) [644168-1](#) [647662-1](#) [65039-019ELF](#) [65817-002LF](#) [65817-015LF](#) [65863-015LF](#) [66207-023LF](#) [67016-026LF](#) [67046-001LF](#) [67095-007LF](#) [67230-005LF](#) [68002-116](#)