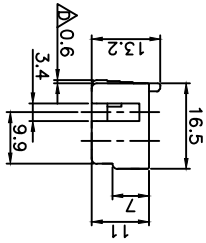
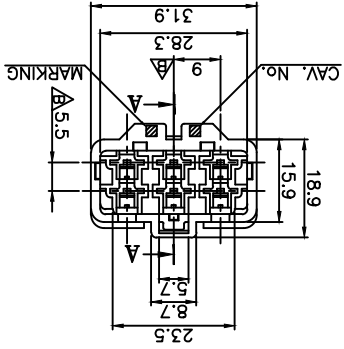


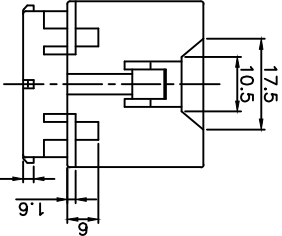
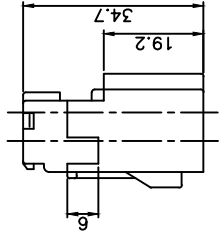
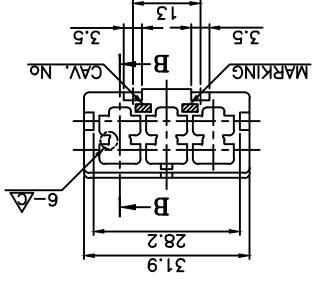
A	± 0.2	± 0.3	± 0.5	± 0.8	± 1.0	± 1.4	± 30°
	10MAX	50MAX	100MAX	150MAX	200MAX	200V/R	ANGLE
GENERAL TOLERANCE							



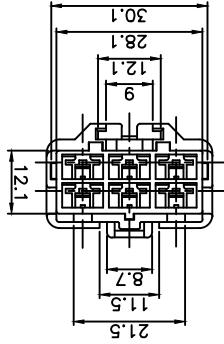
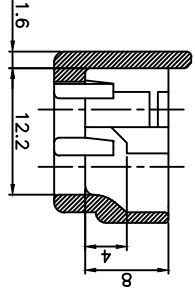
③④⑤ R/H BDS006P



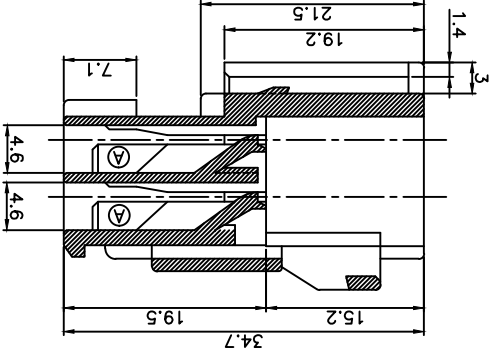
①② CONN. DSD06MP



SECTION B-B(2/1)



SECTION A-A(2/1)



No.	PART NAME	PART No.	COLOR	MATERIAL	THIRD	TOLERANCE	SCALE	DESIGN	DRAWN	CHECKED	APPROVED
					ANGLE						
①	CONN. DSD06MP-W	PH772-06010	WHITE	PP	A	-	-	JSJ	LSJ		CJM
②	CONN. DSD06MP-B	PH772-06020	BLACK	PP							
③	R/H BDS006P-GY	PH780-06720	GRAY	PP							
④	R/H BDS006P-L	PH780-06640	BLUE	PP							
⑤	R/H BDS006P-B	PH780-06620	BLACK	PP							

DRAWING NAME		DATE	승인	CJM	PP
CONN. DSD06MP-W(L) ASSY					
DRAWING No.		DATE	승인	CJM	PP
PH772-06015-C010		95.01.06	-	-	-

REV.	DATE	REASON	BY	CHK
D	06.04.25	회선변경 및 치수추가(1개소)	LSJ	
C	03.12.12	회선변경	SSJ	
B	02.07.03	치수추가(2개소)	KMH	
A	95.01.06	회선추가	KKL	
-	94.07.25	신규	KKL	

4. 본 부품은 비방수형 CONNECTOR임.

ASSY PART NAME	ASSY PART NO.	①	②	③	④	⑤
CONN. DSD06MP-W(L) ASSY	PH772-06015	●				
CONN. DSD06MP-W(R) ASSY	PH772-06016		●			
CONN. DSD06MP-W(GY) ASSY	PH772-06017			●		
CONN. DSD06MP-B(L) ASSY	PH772-06025				●	
CONN. DSD06MP-B(R) ASSY	PH772-06026					●
CONN. DSD06MP-B(GY) ASSY	PH772-06027					●

3. ASSY PART NAME, NO.

PART NAME	PART NO.	적용 견선(SO)
DSD-M-S	MT021-23000	AV,AVS,AVSS 0.3-0.5
DSD-M-S-SH	MT021-23030	DSD-M-M
DSD-M-M	MT021-23200	AV,AVS,AVSS 0.65-2
DSD-M-M-SH	MT021-23230	DSD-M-L
DSD-M-L	MT021-23300	AV,AVS 3
DSD-M-L-SH	MT021-23330	

2. 적용 TERMINAL

3. CAV. No. 및 MARKING은 당사규격에 준하여 라인할 것.

2. 영시되지 않은 공차는 일반공차에 준할 것.

1. 사용상 유해한 홀, BURR등이 없을 것.

- 주 기 -

## X-ON Electronics

Largest Supplier of Electrical and Electronic Components

*Click to view similar products for [Terminal Block Tools & Accessories](#) category:*

*Click to view products by [KUM](#) manufacturer:*

Other Similar products are found below :

[1029563](#) [00171430102](#) [00171420102](#) [014415](#) [CSTSPC1-2](#) [9-1437653-4](#) [928358-1](#) [QC209/J](#) [HCL10-6](#) [1437403-6](#) [1437403-9](#) [1437403-8](#)  
[147832-1](#) [EC0037-000](#) [MT2/H--](#) [MT2/H-32](#) [MT6/H-N](#) [MT6/V-GRND](#) [MT8/H-101-110](#) [BB2-09BF](#) [EP2.5/4UN/BG](#) [1707755](#) [1735590](#)  
[1755480](#) [1760336](#) [BO3-02](#) [1789281](#) [1840227](#) [1840230](#) [1893164](#) [2-1437402-1](#) [2-1437644-9](#) [JB2-09/J](#) [2202307](#) [2204082](#) [2302463](#) [2305949](#)  
[2310581](#) [8TK2-24](#) [91.201.1](#) [L2U2](#) [2778.0](#) [2901107](#) [2901123](#) [2901699](#) [2MP/J](#) [2MV-06](#) [1705126](#) [F03-25](#) [1810532](#)