

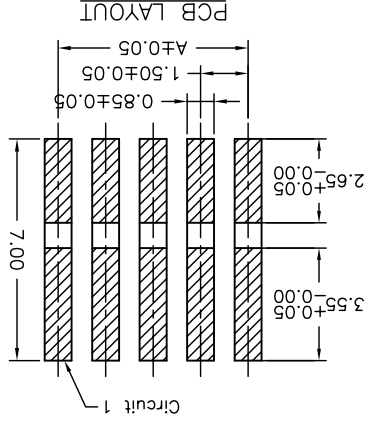
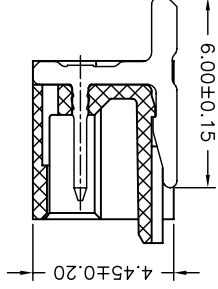
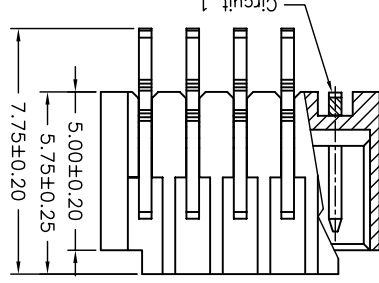
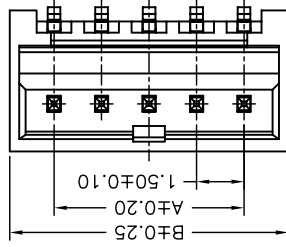
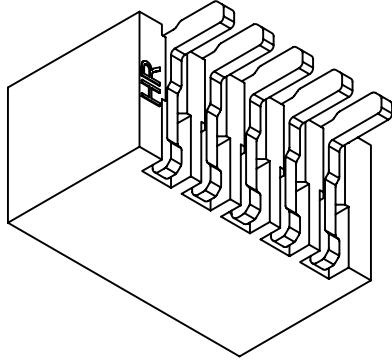
P/N LEGEND

- ① Series No. A1501 WR-S-XP
- ② Connector type: WR=Right angle
- ③ Mounting type: S=SMT
- ④ No. of circuits

SPECIFICATIONS

Current Rating: 3A AC,DC
 Voltage Rating: 350V AC,DC
 Temperature Range: -25°C ~ +85°C
 Contact Resistance: 20mΩ Max.
 Insulation Resistance: 1000MΩ Min.
 Withstanding Voltage: 500V AC/minute
 Pin Material: Brass/Tin-plated
 Material: Nylon 6T,UL94V-0
 Color: Natural(Beige)

PART NO.	Dimensions	
	A	B
02P	1.50	4.30
03P	3.00	5.80
04P	4.50	7.30
05P	6.00	8.80
06P	7.50	10.30
07P	9.00	11.80
08P	10.50	13.30
09P	12.00	14.80
10P	13.50	16.30
11P	15.00	17.80
12P	16.50	19.30
13P	18.00	20.80
14P	19.50	22.30
15P	21.00	23.80



REV.	DESCRIPTION	DATE	NAME
B3	EN1403100004	2014.02.14	周傑亮
B2	EN1312190439	2013.12.19	唐騰鳳
B1	REVERSE	2006.04.13	唐騰鳳
B0	NEW RELEASE	2006.04.13	唐騰鳳

UNIT	SCALE	SHEET
mm	1 : 1	1 of 2

DRAWN BY	APPROVED BY	DATE	GENERAL TOLERANCE
唐騰鳳	張子波	2013.10.17	

REV.	DESCRIPTION	DATE	NAME
X.XXX±0.05			
X.XX±0.15			
X.X±0.25			

燦達電子工業股份有限公司
 JOINT TECH ELECTRONIC IND. CO., LTD.

1.50mm PITCH
 90° WAFER-SMT TYPE

TITLE:
 DRAWN BY: 唐騰鳳
 APPROVED BY: 張子波
 DATE: 2013.10.17
 GENERAL TOLERANCE
 DRAW NO.: A1501WR-S-XP
 REV. B3

X-ON Electronics

Largest Supplier of Electrical and Electronic Components

Click to view similar products for [Headers & Wire Housings](#) category:

Click to view products by [Joint manufacturer](#):

Other Similar products are found below :

[95000-104TRLF](#) [10135584-644402LF](#) [DF62W-EP2022PCA](#) [95000-106TRLF](#) [DF62W-2022SCA](#) [DF62W-EP2022PC](#) [2203348](#) [DF62W-2022SC](#) [1084018](#) [1029039](#) [1084017](#) [802-10-012-10-002000](#) [1112640](#) [1112639](#) [000-34000](#) [0009482033](#) [0009507031](#) [57102-S06-03LF](#) [57202-S52-04LF](#) [PCN6-15S-2.5E](#) [0039019024](#) [58102-G61-06LF](#) [582553-1](#) [0009508121](#) [0022285053](#) [0050291907](#) [018731A](#) [LY20-4P-DT1-P1E-BR](#) [02.125.8002.8](#) [60101931](#) [60598-1 \(Cut Strip\)](#) [M1625-3R/100](#) [61062-3](#) [61082-181009](#) [636-1427](#) [638009-1](#) [641938-9](#) [641991-4](#) [644168-1](#) [647662-1](#) [65039-019ELF](#) [65817-002LF](#) [65817-015LF](#) [65863-015LF](#) [66207-023LF](#) [67016-026LF](#) [67046-001LF](#) [67095-007LF](#) [67230-005LF](#) [68002-116](#)