

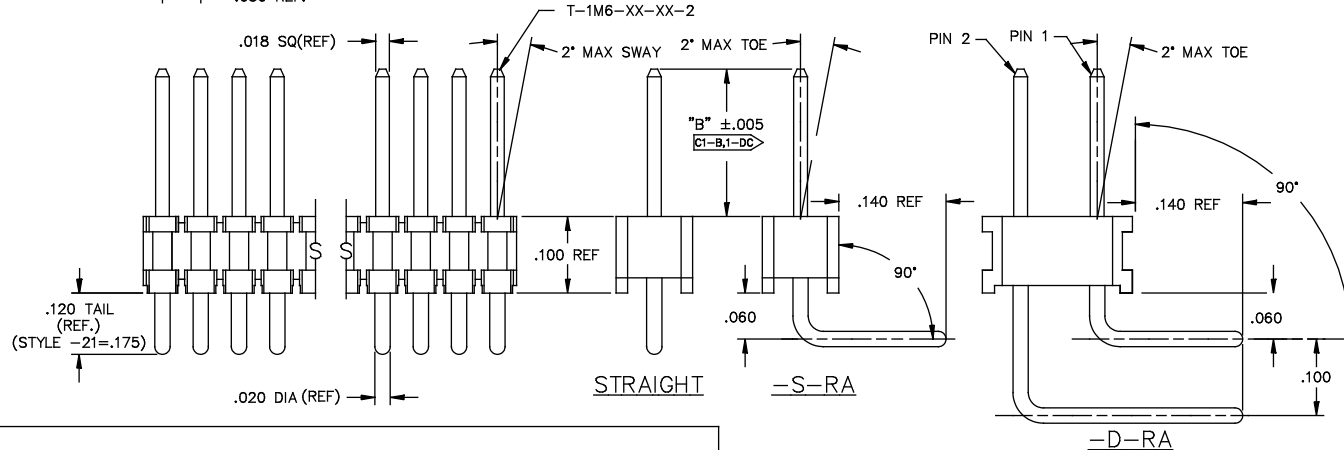
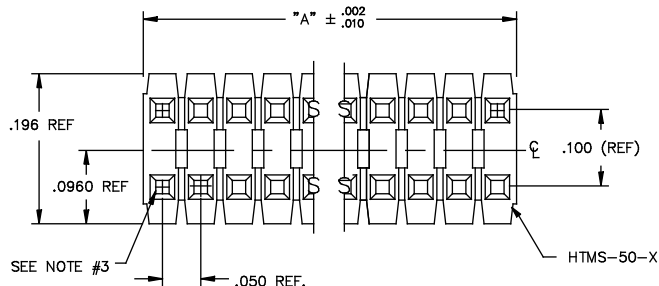
NOTES:

1. MAX ALLOWABLE BOW: .005 INCH/INCH.
2. TERMINAL PUSHOUT FORCE: 2 lbs. MIN.
3. MAX PIN ROTATION IN BODY: 2°.
4. CUT FLASH .010 MAX
5. TUBE POSITIONS 8-50 ONLY. POSITIONS 1-7 TO BE BULK PACKAGED.
6. TUBE VIEWS ARE FOR PLUG LOCATION ONLY, THIS IS NOT AN ILLUSTRATION FOR PART ORIENTATION.

CRITICAL DIMENSION INSPECTION TABLE	
ASSEMBLY OPERATION	IN-PROCESS INSPECTION
FILL	*C1
FILL/POLARIZE	*C1
2ND PRESS	*C1

*WHERE APPLICABLE

DIMENSIONS ARE IN INCHES		TOLERANCES ARE:	
ONE PLACE DECIMALS ± .1	THREE PLACE DECIMALS ± .005	ANGLES ± 2°	
TWO PLACE DECIMALS ± .01	FOUR PLACE DECIMALS ± .0020		

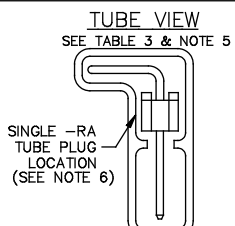
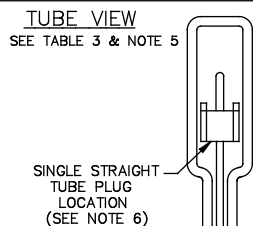
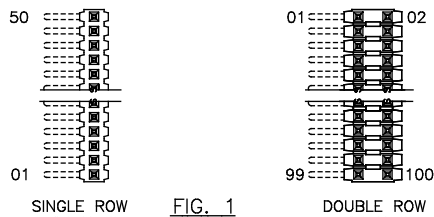


- PLATING SPECIFICATION
- G: 10μ" GOLD IN CONTACT AREA, 10μ" GOLD ON TAIL
 - T: MATTE TIN CONTACT AND TAIL ONLY AVAILABLE ON LEAD STYLES -01, -02, -51 AND -52.
 - S: 30μ" SELECTIVE GOLD IN CONTACT AREA, MATTE TIN ON TAIL
 - F: 3μ" FLASH GOLD IN CONTACT AREA, MATTE TIN ON TAIL
 - H: 30μ" HEAVY GOLD IN CONTACT AREA, 3μ" GOLD ON TAIL
 - FM: 3μ" SELECTIVE FLASH GOLD IN CONTACT AREA, MATTE TIN ON TAIL
 - SM: 30μ" SELECTIVE GOLD IN CONTACT AREA, MATTE TIN ON TAIL
 - TM: MATTE TIN CONTACT AND TAIL ONLY AVAILABLE ON LEAD STYLES -01, -02, -51 AND -52.
 - L: 10μ" LIGHT SELECTIVE GOLD IN CONTACT AREA, MATTE TIN ON TAIL

- OPTION
- POLARIZING SPECIFICATION XXX INDICATES POS. TO BE OMITTED (SEE FIG. 1)
 - OPTION
 - RA: RIGHT ANGLE (SEE TABLE 1) (SINGLE & DOUBLE RA AVAILABLE IN STYLE -01, -02, & -03 ONLY)
- BODY SPECIFICATION
- S: SINGLE (USE HTMS-50-S)
 - D: DOUBLE (USE HTMS-50-D)

LENGTH	"L"	CONTACT AREA
-01	.440	.140
-02	.410	.140
-03	.610	.190
-04	.505	.190
-05	.705	.190
-12	.425	.165
-13	.625	.190
-14	.555	.190
-15	.755	.190
-16	.825	.190
-17	.320	.060
-18	.450	.190
-19	.650	.190
-21	.505	.190
-25	.330	.060
-26	.373	.075
-27	.398	.100
-28	1.050	.190

* REF FOR PIN LENGTH



BODY STYLE	LEAD STYLE	TUBE	PLUG	
TMS-DOUBLE STRAIGHT STYLES	-01, -21, -51, -52	PT-1-24-01-22	TP-03	
	-02	PT-1-24-01-95	TP-03	
	-53	PT-1-24-02-66	TP-03	
	-55, -56	PT-1-24-01-29	TP-24	
	-54	PT-1-24-02-46	TP-03	
	-57	PT-1-24-02-25	TP-03	
	-58, -59	PT-1-24-16-29	TP-07	
	-60	PT-1-24-18-29	TP-07	
	TMS-SINGLE STRAIGHT STYLES	-01	PT-1-24-01-24	TP-24
		-21	PT-1-24-02-29	TP-24
-58, -59, -60		PT-1-24-10-03	TP-33	
-02		PT-1-24-01-12	TP-12	
-51, -52		PT-1-24-01-66	TP-24	
-53, -54, -55, -56		PT-1-24-02-03	TP-24	
-57		PT-1-24-01-46	TP-24	
TMS-DOUBLE RIGHT ANGLE		-01, -02, -03	PT-1-24-02-66	TP-03
		-01, -02, -03	PT-1-24-01-66	TP-24

STRAIGHT OPTION		RIGHT ANGLE OPTION			ALL
LEAD STYLE	TERMINAL SPEC.	LEAD STYLE	PIN #1	PIN #2	"B"
-01	T-1M6-18-XX-2	-01	T-1M6-14-XX-2	T-1M6-15-XX-2	.230
-02	T-1M6-17-XX-2	-02	T-1M6-12-XX-2	T-1M6-13-XX-2	.100
-03	N/A	-03	T-1M6-18-XX-2	T-1M6-19-XX-2	.125
-21	T-1M6-21-XX-2	-21	N/A	N/A	.230
-51	T-1M6-02-XX-2	-51	N/A	N/A	.190
-52	T-1M6-12-XX-2	-52	N/A	N/A	.205
-53	T-1M6-04-XX-2	-53	N/A	N/A	.285
-54	T-1M6-14-XX-2	-54	N/A	N/A	.335
-55	T-1M6-03-XX-2	-55	N/A	N/A	.390
-56	T-1M6-13-XX-2	-56	N/A	N/A	.405
-57	T-1M6-19-XX-2	-57	N/A	N/A	.430
-58	T-1M6-05-XX-2	-58	N/A	N/A	.485
-59	T-1M6-15-XX-2	-59	N/A	N/A	.535
-60	T-1M6-16-XX-2	-60	N/A	N/A	.605

PROPRIETARY NOTE
 THIS DOCUMENT CONTAINS INFORMATION CONFIDENTIAL AND PROPRIETARY TO SAMTEC INC. AND SHALL NOT BE REPRODUCED OR TRANSFERRED TO OTHERS WITHOUT THE WRITTEN CONSENT OF SAMTEC INC.

MATERIAL:
 BODY: LIQUID CRYSTAL POLYMER
 COLOR: BLACK
 TERMINAL: PHOSPHOR BRONZE



520 PARK EAST BLVD. NEW ALBANY, INDIANA 47151-1147
 PHONE (812) 944-6733 P.O. BOX 1147
 CODE 55322

X-ON Electronics

Largest Supplier of Electrical and Electronic Components

Click to view similar products for [Headers & Wire Housings](#) category:

Click to view products by [Samtec](#) manufacturer:

Other Similar products are found below :

[95000-104TRLF](#) [10135584-644402LF](#) [DF62W-EP2022PCA](#) [95000-106TRLF](#) [DF62W-2022SCA](#) [DF62W-EP2022PC](#) [2203348](#) [DF62W-2022SC](#) [1084018](#) [1029039](#) [1084017](#) [802-10-012-10-002000](#) [1112640](#) [1112639](#) [000-34000](#) [0009482033](#) [0009507031](#) [57102-S06-03LF](#) [57202-S52-04LF](#) [PCN6-15S-2.5E](#) [0039019024](#) [58102-G61-06LF](#) [582553-1](#) [0009508121](#) [0022285053](#) [0050291907](#) [018731A](#) [LY20-4P-DT1-P1E-BR](#) [02.125.8002.8](#) [60101931](#) [60598-1 \(Cut Strip\)](#) [M1625-3R/100](#) [61062-3](#) [61082-181009](#) [636-1427](#) [638009-1](#) [641938-9](#) [641991-4](#) [644168-1](#) [647662-1](#) [65039-019ELF](#) [65817-002LF](#) [65817-015LF](#) [65863-015LF](#) [66207-023LF](#) [67016-026LF](#) [67046-001LF](#) [67095-007LF](#) [67230-005LF](#) [68002-116](#)