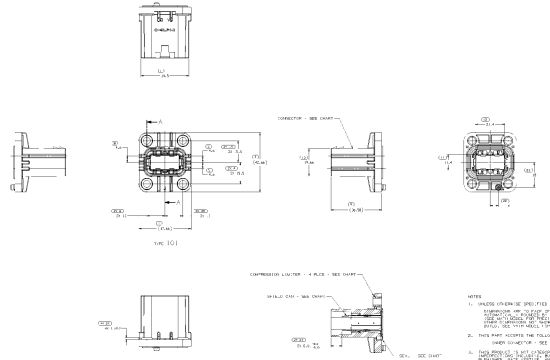
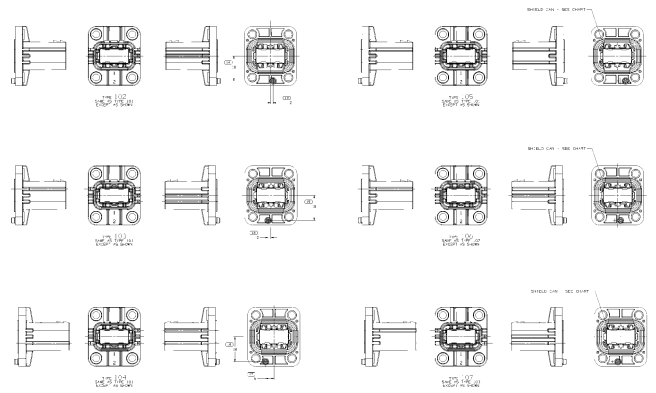


REV	DESCRIPTION	DATE	BY	CHK
1	ISSUED FOR PRODUCTION	10/14/07
2

NO.	DESCRIPTION	QTY	UNIT	REMARKS
1
2
3
4
5
6
7
8
9
10
11
12
13
14
15
16
17
18
19
20
21
22
23
24
25
26
27
28
29
30
31
32
33
34
35
36
37
38
39
40
41
42
43
44
45
46
47
48
49
50



- NOTES
1. UNLESS OTHERWISE SPECIFIED, ALL DIMENSIONS ARE IN MILLIMETERS.
 2. DIMENSIONS ARE GIVEN TO THE CENTERLINE OF THE PART UNLESS OTHERWISE SPECIFIED.
 3. DIMENSIONS ARE GIVEN TO THE CENTERLINE OF THE PART UNLESS OTHERWISE SPECIFIED.
 4. DIMENSIONS ARE GIVEN TO THE CENTERLINE OF THE PART UNLESS OTHERWISE SPECIFIED.
 5. DIMENSIONS ARE GIVEN TO THE CENTERLINE OF THE PART UNLESS OTHERWISE SPECIFIED.
 6. DIMENSIONS ARE GIVEN TO THE CENTERLINE OF THE PART UNLESS OTHERWISE SPECIFIED.
 7. DIMENSIONS ARE GIVEN TO THE CENTERLINE OF THE PART UNLESS OTHERWISE SPECIFIED.
 8. DIMENSIONS ARE GIVEN TO THE CENTERLINE OF THE PART UNLESS OTHERWISE SPECIFIED.
 9. DIMENSIONS ARE GIVEN TO THE CENTERLINE OF THE PART UNLESS OTHERWISE SPECIFIED.
 10. DIMENSIONS ARE GIVEN TO THE CENTERLINE OF THE PART UNLESS OTHERWISE SPECIFIED.
 11. DIMENSIONS ARE GIVEN TO THE CENTERLINE OF THE PART UNLESS OTHERWISE SPECIFIED.
 12. DIMENSIONS ARE GIVEN TO THE CENTERLINE OF THE PART UNLESS OTHERWISE SPECIFIED.
 13. DIMENSIONS ARE GIVEN TO THE CENTERLINE OF THE PART UNLESS OTHERWISE SPECIFIED.
 14. DIMENSIONS ARE GIVEN TO THE CENTERLINE OF THE PART UNLESS OTHERWISE SPECIFIED.
 15. DIMENSIONS ARE GIVEN TO THE CENTERLINE OF THE PART UNLESS OTHERWISE SPECIFIED.
 16. DIMENSIONS ARE GIVEN TO THE CENTERLINE OF THE PART UNLESS OTHERWISE SPECIFIED.
 17. DIMENSIONS ARE GIVEN TO THE CENTERLINE OF THE PART UNLESS OTHERWISE SPECIFIED.
 18. DIMENSIONS ARE GIVEN TO THE CENTERLINE OF THE PART UNLESS OTHERWISE SPECIFIED.
 19. DIMENSIONS ARE GIVEN TO THE CENTERLINE OF THE PART UNLESS OTHERWISE SPECIFIED.
 20. DIMENSIONS ARE GIVEN TO THE CENTERLINE OF THE PART UNLESS OTHERWISE SPECIFIED.
 21. DIMENSIONS ARE GIVEN TO THE CENTERLINE OF THE PART UNLESS OTHERWISE SPECIFIED.
 22. DIMENSIONS ARE GIVEN TO THE CENTERLINE OF THE PART UNLESS OTHERWISE SPECIFIED.
 23. DIMENSIONS ARE GIVEN TO THE CENTERLINE OF THE PART UNLESS OTHERWISE SPECIFIED.
 24. DIMENSIONS ARE GIVEN TO THE CENTERLINE OF THE PART UNLESS OTHERWISE SPECIFIED.
 25. DIMENSIONS ARE GIVEN TO THE CENTERLINE OF THE PART UNLESS OTHERWISE SPECIFIED.
 26. DIMENSIONS ARE GIVEN TO THE CENTERLINE OF THE PART UNLESS OTHERWISE SPECIFIED.
 27. DIMENSIONS ARE GIVEN TO THE CENTERLINE OF THE PART UNLESS OTHERWISE SPECIFIED.
 28. DIMENSIONS ARE GIVEN TO THE CENTERLINE OF THE PART UNLESS OTHERWISE SPECIFIED.
 29. DIMENSIONS ARE GIVEN TO THE CENTERLINE OF THE PART UNLESS OTHERWISE SPECIFIED.
 30. DIMENSIONS ARE GIVEN TO THE CENTERLINE OF THE PART UNLESS OTHERWISE SPECIFIED.
 31. DIMENSIONS ARE GIVEN TO THE CENTERLINE OF THE PART UNLESS OTHERWISE SPECIFIED.
 32. DIMENSIONS ARE GIVEN TO THE CENTERLINE OF THE PART UNLESS OTHERWISE SPECIFIED.
 33. DIMENSIONS ARE GIVEN TO THE CENTERLINE OF THE PART UNLESS OTHERWISE SPECIFIED.
 34. DIMENSIONS ARE GIVEN TO THE CENTERLINE OF THE PART UNLESS OTHERWISE SPECIFIED.
 35. DIMENSIONS ARE GIVEN TO THE CENTERLINE OF THE PART UNLESS OTHERWISE SPECIFIED.
 36. DIMENSIONS ARE GIVEN TO THE CENTERLINE OF THE PART UNLESS OTHERWISE SPECIFIED.
 37. DIMENSIONS ARE GIVEN TO THE CENTERLINE OF THE PART UNLESS OTHERWISE SPECIFIED.
 38. DIMENSIONS ARE GIVEN TO THE CENTERLINE OF THE PART UNLESS OTHERWISE SPECIFIED.
 39. DIMENSIONS ARE GIVEN TO THE CENTERLINE OF THE PART UNLESS OTHERWISE SPECIFIED.
 40. DIMENSIONS ARE GIVEN TO THE CENTERLINE OF THE PART UNLESS OTHERWISE SPECIFIED.
 41. DIMENSIONS ARE GIVEN TO THE CENTERLINE OF THE PART UNLESS OTHERWISE SPECIFIED.
 42. DIMENSIONS ARE GIVEN TO THE CENTERLINE OF THE PART UNLESS OTHERWISE SPECIFIED.
 43. DIMENSIONS ARE GIVEN TO THE CENTERLINE OF THE PART UNLESS OTHERWISE SPECIFIED.
 44. DIMENSIONS ARE GIVEN TO THE CENTERLINE OF THE PART UNLESS OTHERWISE SPECIFIED.
 45. DIMENSIONS ARE GIVEN TO THE CENTERLINE OF THE PART UNLESS OTHERWISE SPECIFIED.
 46. DIMENSIONS ARE GIVEN TO THE CENTERLINE OF THE PART UNLESS OTHERWISE SPECIFIED.
 47. DIMENSIONS ARE GIVEN TO THE CENTERLINE OF THE PART UNLESS OTHERWISE SPECIFIED.
 48. DIMENSIONS ARE GIVEN TO THE CENTERLINE OF THE PART UNLESS OTHERWISE SPECIFIED.
 49. DIMENSIONS ARE GIVEN TO THE CENTERLINE OF THE PART UNLESS OTHERWISE SPECIFIED.
 50. DIMENSIONS ARE GIVEN TO THE CENTERLINE OF THE PART UNLESS OTHERWISE SPECIFIED.

3954107

NO.	DESCRIPTION	QTY	UNIT	REMARKS
1
2
3
4
5
6
7
8
9
10
11
12
13
14
15
16
17
18
19
20
21
22
23
24
25
26
27
28
29
30
31
32
33
34
35
36
37
38
39
40
41
42
43
44
45
46
47
48
49
50

DELPHI
 3954107
 10/14/07

10142010

X-ON Electronics

Largest Supplier of Electrical and Electronic Components

Click to view similar products for [Automotive Connectors](#) category:

Click to view products by [Delphi](#) manufacturer:

Other Similar products are found below :

[003-018-000](#) [600858](#) [60403001](#) [60993906-B](#) [60993913-B](#) [629515004020001](#) [M902-2131](#) [M902-2161](#) [M902-2344](#) [72.330.1035.1](#)
[73.353.4028.0](#) [F118010](#) [F119300-B](#) [F132210](#) [F132210-B](#) [F166900](#) [F180100](#) [F258300](#) [F258300-B](#) [F294300-B](#) [F339100](#) [F339700](#) [F358300-](#)
[B](#) [F374110](#) [F407400](#) [F412210](#) [F427600](#) [F444110](#) [F487000](#) [F495100-B](#) [F500900-B](#) [F509500B-B](#) [770444-1](#) [776880-1](#) [827153-1](#) [881735-1](#)
[8N1515-32-24P](#) [9-1326727-8](#) [9-1326729-8](#) [925467-1](#) [925474-1](#) [928905-1](#) [936398-2](#) [964562-1](#) [964562-4](#) [964731-2](#) [965051-1](#) [968782-1](#)
[GT17SA-8DS-HU](#) [GT17VS-10DP-5.2CF](#)