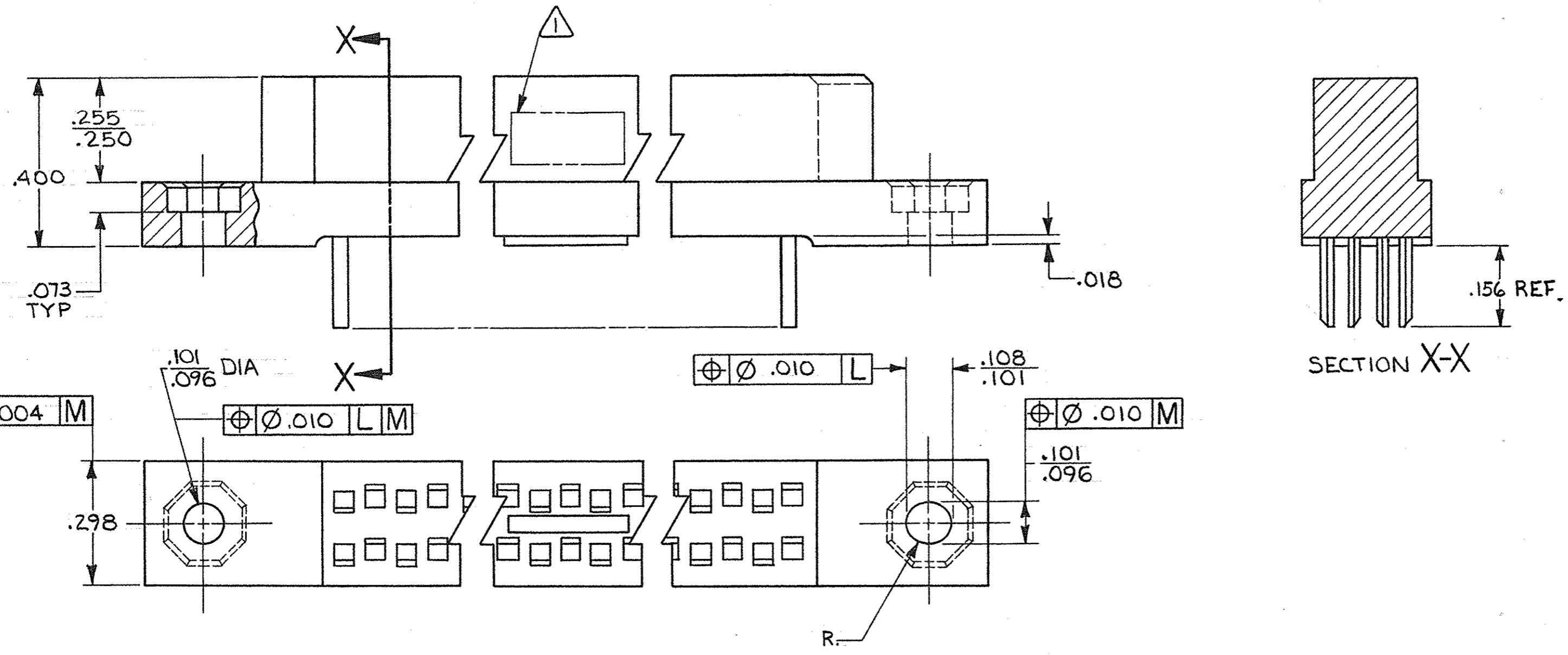
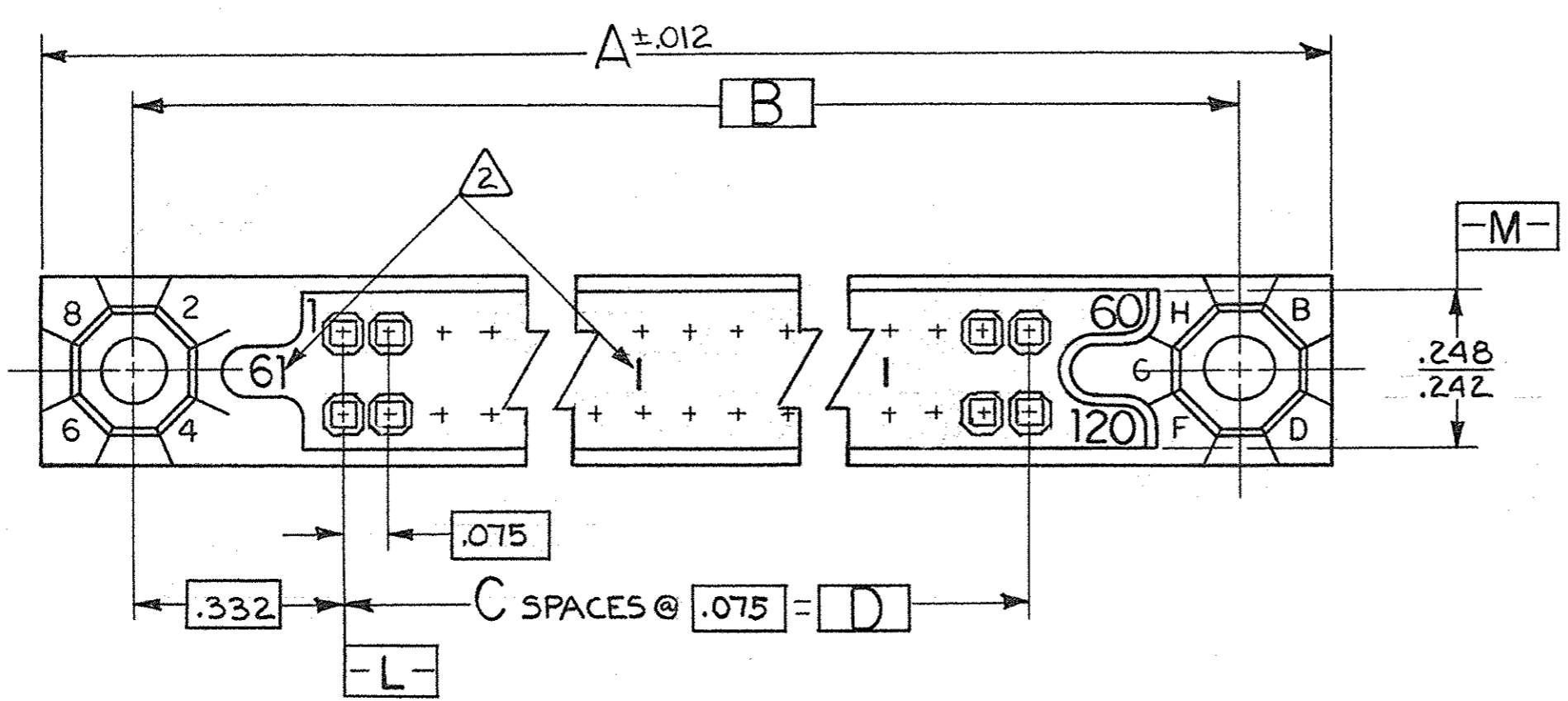


© COPYRIGHT 19 BY AMP INCORPORATED, HARRISBURG, PA.
ALL INTERNATIONAL RIGHTS RESERVED. AMP INCORPORATED PRODUCTS
COVERED BY U. S. AND FOREIGN PATENTS AND/OR PATENTS PENDING.

REVISIONS						
P	F	ZONE	LTR	DESCRIPTION	DATE	APPROVED
			01	REVISED 6924 m.s.	10-80	P-28
			A	REV. PER ECN AB-0535	db 1/16/85	EAM
			A1	REV PER ECN AB-0868	db 5/20/85	gpb
			B	REV PER DF-0089	TS 8/2/88	DRM
			C	REV PER 0600-5631-96	TT 8-98	DRM
			D	REV PER ECD-07-004569	3-07	PY



$\equiv .004$ M

$\varnothing .101$ DIA
 $.096$

$\varnothing .010$ L M

$\varnothing .010$ L

$\varnothing .010$ M

$.101$
 $.096$

R

531813

UNLESS OTHERWISE SPECIFIED DIMENSIONS ARE IN INCHES. TOLERANCES ON: DECIMALS $\pm .005$ ANGLES \pm		CONTRACT NO		PART NO	
		DR Debra Kelly 12-28-79		AMP INCORPORATED Harrisburg, Pa.	
MATERIAL $\triangle 4$ $\triangle 5$		CHK Joseph W. Durlin 2/13/80		NAME RCPT ASSY, 750 SERIES BOX, WITH EXTERNAL KEYING AND FLOW SOLDER CONTACTS	
		APPD Joseph W. Durlin 2/13/80		SIZE CODE IDENT NO DRAWING NO	
FINISH $\triangle 6$		APPD E. Parsons 2-14-80		C 00779 531813	
		DSGN APPD		REV D	
OTHER APPD		SCALE 4:1		SHEET 1 OF 2	

© COPYRIGHT 1980 BY AMP INCORPORATED, HARRISBURG, PA.
 ALL INTERNATIONAL RIGHTS RESERVED. AMP INCORPORATED PRODUCTS
 COVERED BY U. S. AND FOREIGN PATENTS AND/OR PATENTS PENDING.

REVISIONS					
P	F	ZONE/LTR	DESCRIPTION	DATE	APPROVED
SEE SHEET 1					

- 1. AMP, PART NUMBER & DATE CODE INK STAMPED WHITE THIS AREA.
- 2. NUMBERS (SEE TABLE) AND LINES INDICATING EVERY FIVE CAVITIES STAMPED ON MATING FACE IN WHITE INK
- 3. USES KEY PART NUMBER 530341-1 OR 530938-1
- 4. HOUSING MATERIAL-DIALLYL PHTHALATE, COLOR-BLUE
- 5. CONTACT MATERIAL- BERYLLIUM COPPER (BeCu) OR COPPER NICKEL SILICONE (CuNiSi)
- 6. CONTACT FINISH-.000030 GOLD IN CONTACT AREA, .000100 TIN-LEAD ON TAILS, OVER NICKEL ENTIRE CONTACT.
- 7. MUST MEET THE REQUIREMENTS OF MIL-C-55302.

	91	90	6.675	89	7.340	7.630	180	531813-4
OBSOLETE	81	80	5.925	79	6.590	6.880	160	531813-3
	76	75	5.550	74	6.215	6.505	150	531813-2
OBSOLETE	61	60	4.425	59	5.090	5.380	120	531813-1

CAVITY IDENT NO.	D	C	B	A	NO. OF CONTACTS	PART NO
UNLESS OTHERWISE SPECIFIED DIMENSIONS ARE IN INCHES. TOLERANCES ON: DECIMALS $\pm .005$ ANGLES \pm		CONTRACT NO		AMP AMP INCORPORATED Harrisburg, Pa.		
MATERIAL		DR <i>Debra Kelly</i> 12-28-79		NAME RCPT ASSY, 750 SERIES BOX, WITH EXTERNAL KEYING AND FLOW SOLDER CONTACTS		
FINISH		CHK <i>Royce W. Durbin</i> 2/13/80		SIZE CODE IDENT NO DRAWING NO		
		APPD <i>Royce W. Durbin</i> 2/13/80		C 00779 531813		
		APPD <i>R. Parsons</i> 2-14-80		REV D		
		DSGN APPD		SCALE		
		OTHER APPD		SHEET 2		

531813

X-ON Electronics

Largest Supplier of Electrical and Electronic Components

Click to view similar products for [Headers & Wire Housings](#) category:

Click to view products by [TE Connectivity](#) manufacturer:

Other Similar products are found below :

[95000-104TRLF](#) [10135584-644402LF](#) [DF62W-EP2022PCA](#) [95000-106TRLF](#) [DF62W-2022SCA](#) [DF62W-EP2022PC](#) [2203348](#) [DF62W-2022SC](#) [1084018](#) [1029039](#) [1084017](#) [802-10-012-10-002000](#) [1112640](#) [1112639](#) [000-34000](#) [0009482033](#) [0009507031](#) [57102-S06-03LF](#) [57202-S52-04LF](#) [PCN6-15S-2.5E](#) [0039019024](#) [58102-G61-06LF](#) [582553-1](#) [0009508121](#) [0022285053](#) [0050291907](#) [018731A](#) [LY20-4P-DT1-P1E-BR](#) [02.125.8002.8](#) [60101931](#) [60598-1 \(Cut Strip\)](#) [M1625-3R/100](#) [61062-3](#) [61082-181009](#) [636-1427](#) [638009-1](#) [641938-9](#) [641991-4](#) [644168-1](#) [647662-1](#) [65039-019ELF](#) [65817-002LF](#) [65817-015LF](#) [65863-015LF](#) [66207-023LF](#) [67016-026LF](#) [67046-001LF](#) [67095-007LF](#) [67230-005LF](#) [68002-116](#)