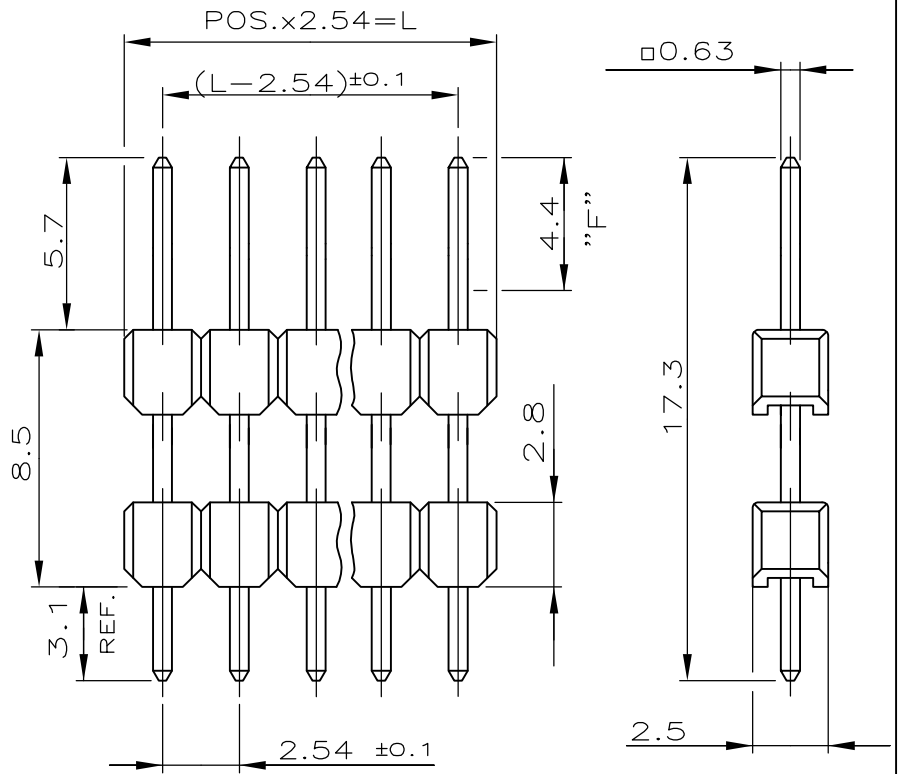


LOC	DIST	REVISIONS					
A1	—	P	LTR	DESCRIPTION	DATE	DWN	APVD
		C		CONTACT PIN MATERIAL & PLATING CHANGE	26JUN2014	PS	JK

POS.	L±0.5	PART NO.
—	—	—
2	5.08	966245-2
3	7.62	—
4	10.16	—
5	12.70	—
6	15.24	—
7	17.78	—
8	20.32	—
9	22.86	—
10	25.40	—
11	27.94	—
12	30.48	—
13	33.02	—
14	35.56	—
15	38.10	—
16	40.64	—
17	43.18	—
18	45.72	—
19	48.26	—
20	50.80	—
21	53.34	—
22	55.88	—
23	58.42	—
24	60.96	—
25	63.50	—
26	66.04	—
27	68.58	—
28	71.12	—
29	73.66	—
30	76.20	—
31	78.74	—
32	81.28	—
33	83.82	—
34	86.36	—
35	88.90	—
36	91.44	—
37	93.98	—
38	96.52	—
39	99.06	—
40	101.60	—
41	104.14	—
42	106.68	—
43	109.22	—
44	111.76	—
45	114.30	—
46	116.84	—
47	119.38	—
48	121.92	—
49	124.46	—
50	127.00	966245-0

CONTACT PIN	CuZn	1
HOUSING	PBT	GREEN
DESCRIPTION	MATERIAL	FINISH / COLOR



- 1 MATING SIDE: MIN 0.7µm PdNi+ MIN 0.1µm GOLD FLASH IN ZONE "F" OVER 1.27µm NICKEL
SOLDER SIDE: 3.0 TO 5.0µm TIN OVER 1.27µm NICKEL.
- 2 OBSOLETE PARTS: OBSOLETE CIS STREAMLINING PER D.RENAUD/D.SINISI
- 3 OBSOLETE

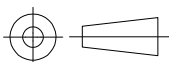
RELEASED FOR PUBLICATION

ALL RIGHTS RESERVED.

COPYRIGHT - By -

THIS DRAWING IS UNPUBLISHED.

DIMENSIONS: mm	DWN	25.03.93	MATERIAL	SEE TABLE	FINISH	SEE TABLE
	CHK	A.HO	TE Connectivity			
TOLERANCES UNLESS OTHERWISE SPECIFIED:	APVD	M.SCHAARSCHMIDT				
±0.2 mm	PRODUCT SPEC	108-18012	NAME			
0 PLC ± -	APPLICATION SPEC	—	SPEC. AMPMODU II PIN HEADER, SINGLE ROW			
1 PLC ± -	WEIGHT	—	SIZE	CAGE CODE	DRAWING NO	RESTRICTED TO
2 PLC ± -			A4	00779	C-966245	—
3 PLC ± -			CUSTOMER DRAWING			SCALE
4 PLC ± -						4:1
ANGLES ± -						SHEET
						1 OF 1
						REV
						C



X-ON Electronics

Largest Supplier of Electrical and Electronic Components

Click to view similar products for [Headers & Wire Housings](#) category:

Click to view products by [TE Connectivity](#) manufacturer:

Other Similar products are found below :

[95000-104TRLF](#) [10135584-644402LF](#) [DF62W-EP2022PCA](#) [95000-106TRLF](#) [DF62W-2022SCA](#) [DF62W-EP2022PC](#) [2203348](#) [DF62W-2022SC](#) [1084018](#) [1029039](#) [1084017](#) [802-10-012-10-002000](#) [1112640](#) [1112639](#) [000-34000](#) [0009482033](#) [0009507031](#) [57102-S06-03LF](#) [57202-S52-04LF](#) [PCN6-15S-2.5E](#) [0039019024](#) [58102-G61-06LF](#) [582553-1](#) [0009508121](#) [0022285053](#) [0050291907](#) [018731A](#) [LY20-4P-DT1-P1E-BR](#) [02.125.8002.8](#) [60101931](#) [60598-1 \(Cut Strip\)](#) [M1625-3R/100](#) [61062-3](#) [61082-181009](#) [636-1427](#) [638009-1](#) [641938-9](#) [641991-4](#) [644168-1](#) [647662-1](#) [65039-019ELF](#) [65817-002LF](#) [65817-015LF](#) [65863-015LF](#) [66207-023LF](#) [67016-026LF](#) [67046-001LF](#) [67095-007LF](#) [67230-005LF](#) [68002-116](#)