

## LIQUID LEVEL SENSORS

Grangestone Industrial Estate  
 Girvan, Ayrshire KA26 9PS  
 United Kingdom

### VS Series – Vertical Liquid Level Sensor

Telephone: +44 1465 713581  
 Fax: +44 1465 714974

## VS303-51N

E-Mail: [info@gentechsensors.com](mailto:info@gentechsensors.com)  
 Web Site [www.gentechsensors.com](http://www.gentechsensors.com)

### Design

#### Features

- High or low level sensing
- Internal & External Fitting Components
- Reed Switch reliability
- Nitrile sealing components
- Easy installation



### Product

#### Comments

- UL listed model, File E98428
- Normally open or normally closed by float reversal
- Suitable for a wide range of liquids
- Top or Bottom Tank Entry Vertical Stem / Float Travel
- Nylon 6.6 Materials

### Typical

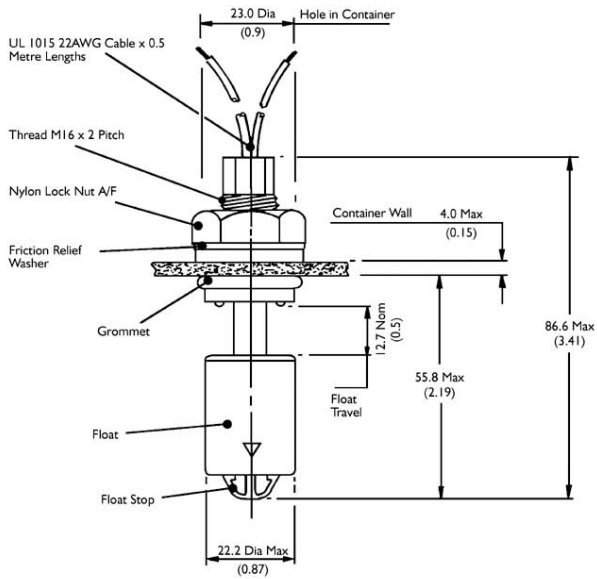
#### Applications

- Fuel Low or High Level Sensing
- Chemical High or Low Level
- Sump Level
- Cooking Oil
- Alcohols

### Material, Design and Operation

Mounting:	Top & Bottom
Material:	Nylon 6.6
Fitting	Internal & External Fitting options
Contact Form:	Form A– SPST
Contact Material:	Ruthenium
Maximum Switching Volts:	250VAC
Maximum Switching Current:	1.0
Maximum Power:	15 Watts
Housing Temperature Range °C:	110
Housing Material:	Glass Filled Nylon 6.6
Housing Colour:	Blue
Float Material:	Glass Filled Nylon 6.6
Connection Type:	Stripped Cables
Cable Type:	2 x 22AWG 16/0.2mm PVC insulated 0.5m long to UL/CSA/BS6361
Cable Colour:	Black/Black
Minimum Specific Gravity:	0.85
Operating Temperature Range °C:	110
Operating Pressure BAR:	4
Sealing Components:	Nitrile
Mounting Shock:	50g for 11ms duration
Mounting Vibration:	35g up to 500Hz
Operate Mode:	N/C with float down
Approvals:	UL

## Line Drawing



### EXTERNAL FITTING

**CONTAINER WALL**  
(THICKNESS MAX 4mm, MIN 1mm)

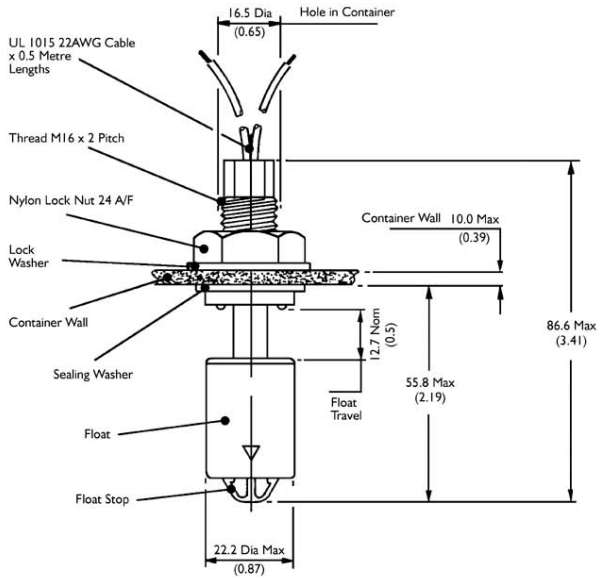
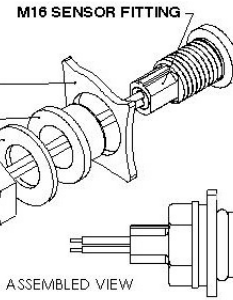
NOTE! DRILL 0.9" OR 23mm HOLE,  
ENSURE FREE FROM SWarf AND  
SHARP EDGES.

SEALING GROMMET

FRICITION RELIEF  
WASHER

FIXING NUT

NOTE! MAX TORQUE 2lbs/ft  
OR 2.67Nm.



### INTERNAL FITTING

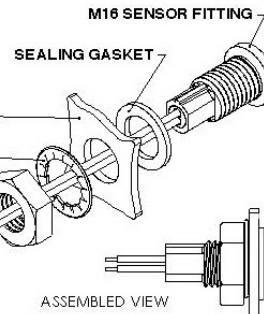
**CONTAINER WALL**  
(THICKNESS MAX 10mm, MIN 1mm)

NOTE! DRILL 0.65" OR 16.5mm HOLE,  
ENSURE FREE FROM SWarf AND  
SHARP EDGES.

LOCK WASHER

FIXING NUT

NOTE! MAX TORQUE 3lbs/ft  
OR 4Nm.



## X-ON Electronics

Largest Supplier of Electrical and Electronic Components

*Click to view similar products for te connectivity manufacturer:*

Other Similar products are found below :

[4-1633138-8](#) [570416-000](#) [CLTEQ-M81CE-SSRELAY-4-20V](#) [D38999/24FJ4AN](#) [4-1195131-0](#) [650069-000](#) [SMD100-2](#) [CB-1022B-78](#)  
[RM707012](#) [RP410012](#) [MMS42](#) [1-640426-8](#) [2EDL4CM](#) [DTS20W19-11PD-3028-LC](#) [RM202615](#) [NC6-P104-06](#) [MSPS103B](#) [DTS26F21-](#)  
[41HE-LC](#) [DTS26F21-41AE](#) [DTS26F21-41PE-LC](#) [DTS26F21-11SE-3028-LC](#) [1932144-1](#) [293545-4](#) [LVR125S](#) [MS27466T25F4PB](#) [CKB-38-](#)  
[78010](#) [1206SFF150F/63-2](#) [D38999/20JB35HA](#) [D38999/24WJ20PA](#) [TE1500A2R2J](#) [DTS24F25-29PC-3028-LC](#) [D38999/24WG11HA](#)  
[D38999/24WG11HN](#) [MS27467T21F11H](#) [DJT16E21-11HA](#) [1206SFH150F/24-2](#) [DTS24F19-11SC-3028-LC](#) [DTS24F21-41HN-LC](#)  
[DTS24F21-41AN](#) [DTS24F21-41PN-LC](#) [RP330024](#) [MS27467T21F35J](#) [MS27467T21F11J](#) [MS27467T21F16H-LC](#) [MS27467T21F35H](#)  
[MS27467T21F41H-LC](#) [DJT16E21-11PA-LC](#) [DJT16E21-11HA-LC](#) [DJT16E21-11AA](#) [MS27467T21B11JA](#)