



plugs and sockets

plugs and sockets



Global

Measurement and Control



Global

Measurement and Control

Global are the designers and manufacturers of temperature measurement solutions; connectors are just one of many products. If you have a special requirement for connectors, cable, sensing devices, calibration blocks or instrumentation, please phone or email our sales desk for advice, we are sure we will be able to help.

Global Measurement and Control Limited
Unit 17, Ford Lane Business Park, Ford Lane, Nr Arundel, West Sussex BN18 0UZ

Telephone: 01243 555277 • Fax: 01243 555177

e-mail: enquiries@globalitd.co.uk • website: www.globalitd.co.uk

A member of the Concord Group

plugs and sockets

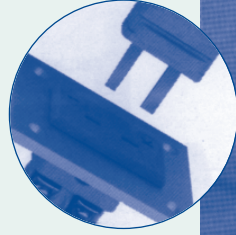
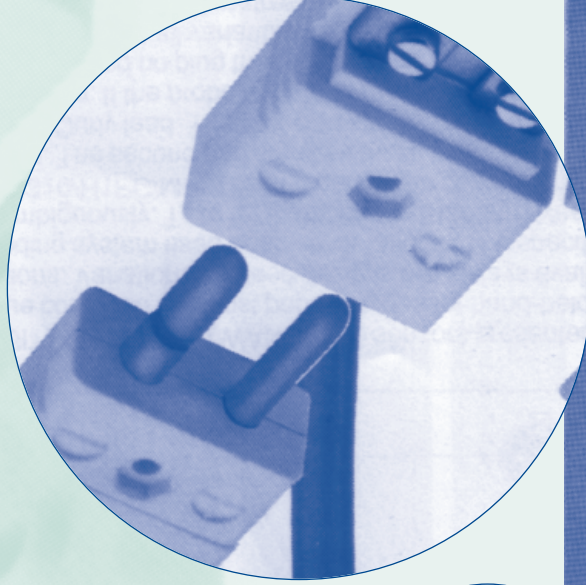
Global are a company specialising in temperature measurement solutions, one being the manufacture of miniature and standard thermocouple connectors.

Our range of miniature and standard connectors are uniquely shaped allowing ease of use, manufactured as a one pressed body giving superior strength and quality, and are available in most common thermocouple combinations, using thermocouple grade alloys for error free connections.

Our connector range is available with maximum temperature ratings of 220°C and 560°C. The 220°C connectors are colour coded to international colour standard IEC84.3:1989 (other colour standards available upon request). The 560°C ceramic connectors are supplied in white and are marked with identifying international colour code.

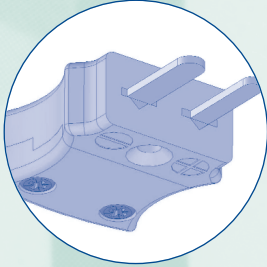
Pins are polarised by size and are marked for negative and positive polarity. All connectors are compatible with other miniature and standard connectors. To order, please use the part code shown against the product and type.

A range of accessories and fascia mounting systems are also available. All miniature in-line connectors have a 3mm cable entry, and all standard in-line connectors have a 6mm cable entry.



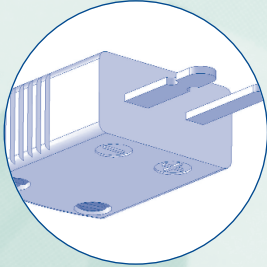
Miniature connectors

Mini Plug - In line. Rated 220°C



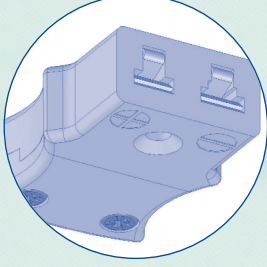
PART NO.	TYPE
04-3510-00	J
04-1510-00	K
04-6510-00	N
04-2510-00	T
04-8510-00	Copper

Ceramic Mini Plug - In line. Rated 560°C



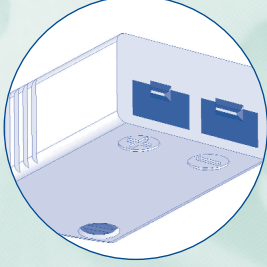
PART NO.	TYPE
04-3710-00	J
04-1710-00	K
04-6710-00	N
04-2710-00	T
04-8710-00	Copper

Mini Socket - In line. Rated 220°C



PART NO.	TYPE
04-3560-00	J
04-1560-00	K
04-6560-00	N
04-2560-00	T
04-8560-00	Copper

Ceramic Mini Socket - In line. Rated 560°C

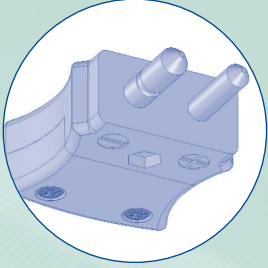


PART NO.	TYPE
04-3760-00	J
04-1760-00	K
04-6760-00	N
04-2760-00	T
04-8760-00	Copper

Standard connectors

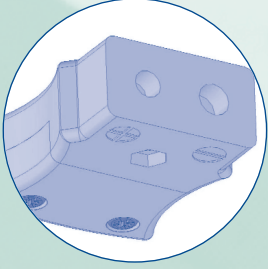
Using solid pin construction.

Standard Plug - In line. Rated 220°C



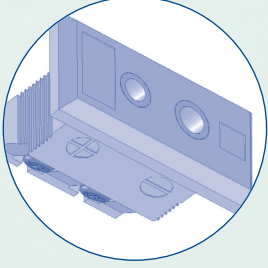
PART NO.	TYPE
04-3010-00	J
04-1010-00	K
04-6010-00	N
04-2010-00	T
04-8010-00	Copper

Standard Socket - In line. Rated 220°C



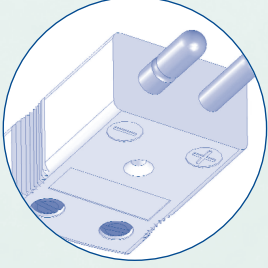
PART NO.	TYPE
04-3060-00	J
04-1060-00	K
04-6060-00	N
04-2060-00	T
04-8060-00	Copper

Standard Fascia - Rated 220°C



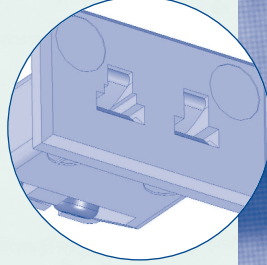
PART NO.	TYPE
04-3060-01	J
04-1060-01	K
04-6060-01	N
04-2060-01	T
04-8060-01	Copper

Ceramic Standard Plug - In line. Rated 560°C



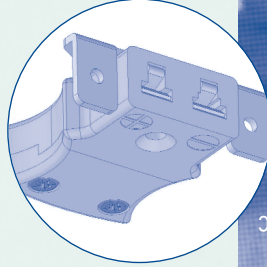
PART NO.	TYPE
04-3310-00	J
04-1310-00	K
04-6310-00	N
04-2310-00	T
04-8310-00	Copper

Other thermocouple calibrations are available on request



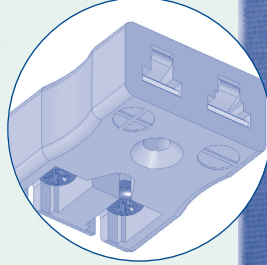
Mini Fascia Socket - Rated 220°C

PART NO.	TYPE
04-3560-01	J
04-1560-01	K
04-6560-01	N
04-2560-01	T
04-8560-01	Copper



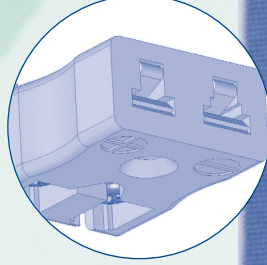
Mini Socket Panel- With S/S Bracket. Rated 220°C

PART NO.	TYPE
04-3560-06	J
04-1560-06	K
04-6560-06	N
04-2560-06	T
04-8560-06	Copper



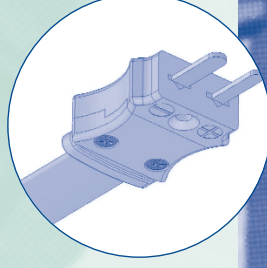
Mini Quickwire Socket - Rated 220°C

PART NO.	TYPE
04-3560-04	J
04-1560-04	K
04-6560-04	N
04-2560-04	T
04-8560-04	Copper



Mini PCB Socket - Rated 220°C

PART NO.	TYPE
04-3760-02	J
04-1760-02	K
04-6760-02	N
04-2760-02	T
04-8760-02	Copper

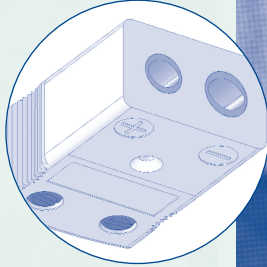


Cable Caddle - Mini plug with wire carrier

PART NO.	TYPE
??-????-??	?

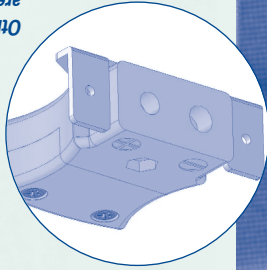
Ceramic Standard Socket - In line, Rated 560°C

PART NO.	TYPE
04-3360-00	J
04-1360-00	K
04-6360-00	N
04-2360-00	T
04-8360-00	Copper



Standard Socket - With S/S Bracket, Rated 220°C

PART NO.	TYPE
04-3060-00	J
04-1060-00	K
04-6060-00	N
04-2060-00	T
04-8060-00	Copper



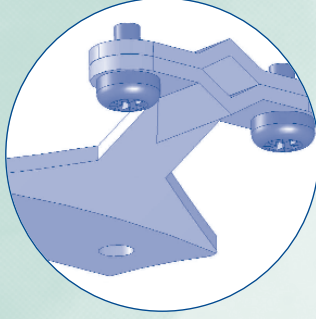
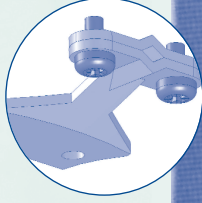
Other thermocouple calibrations are available on request

Accessories

for miniature connectors

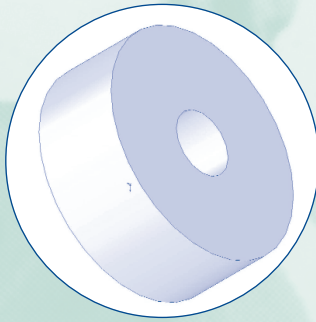
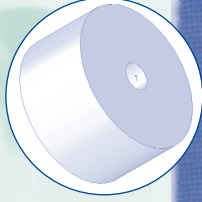
Cable Clamp - Miniature and Standard

PART NO.	TYPE
77-7777-77	Miniature
77-7777-77	Standard



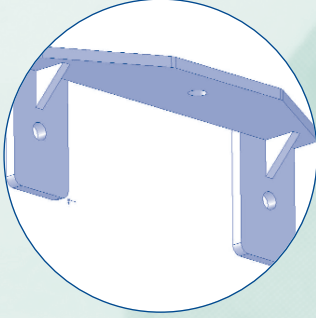
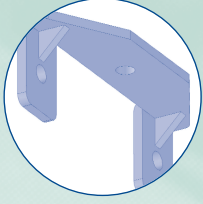
Neoprene Grommet - Miniature and Standard

PART NO.	TYPE
77-7777-77	Miniature
77-7777-77	Standard



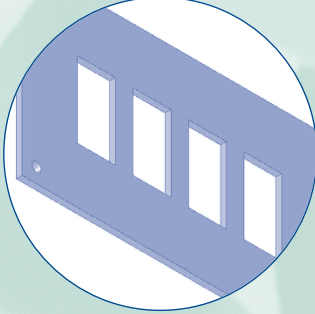
Panels - Miniature and Standard

PART NO.	TYPE
77-7777-77	Miniature
77-7777-77	Standard



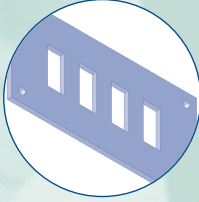
Standard Panel

PART NO.	WAYS	SIZE
77-7777-77	2 Way	L-62mm
77-7777-77	4 Way	L-112mm
77-7777-77	6 Way	L-162mm
77-7777-77	8 Way	L-212mm
77-7777-77	10 Way	L-262mm
77-7777-77	12 Way	L-312mm

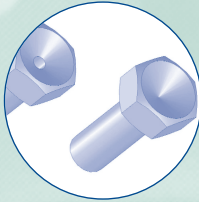
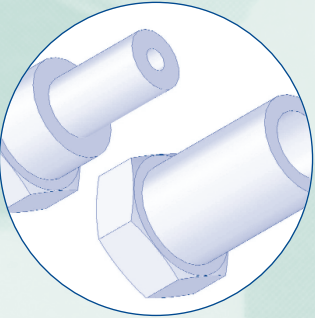


Mini Panel

PART NO.	WAYS	SIZE
77-7777-77	2 Way	L-40mm
77-7777-77	4 Way	L-72mm
77-7777-77	6 Way	L-104mm
77-7777-77	8 Way	L-136mm
77-7777-77	10 Way	L-168mm
77-7777-77	12 Way	L-200mm



Standard and Mini Panels - Aluminium panel for use with fascia sockets



PART NO.	SIZE
77-7777-77	0.5mm, 1.0mm or 1.5mm
77-7777-77	1.5mm, 3.0mm or 4.5mm

Standard Crimp Inserts - Standard inserts can be drilled out to the following sizes

X-ON Electronics

Largest Supplier of Electrical and Electronic Components

Click to view similar products for [global measurement and control manufacturer](#):

Other Similar products are found below :

[GLOBAL MEASUREMENT AND CONTROL](#)