

BPOWER[®]

Bpower EXCELLENT YP15-3

INNOVATIVE AGM TECHNOLOGY 12V - FACTORY ACTIVATED

Parameters

Voltage	12V
Capacity	13Ah
Current	250A

Dimensions

Length	134mm
Width	89mm
Height	164mm

Weight

With electrolyte	5,25kg
------------------	--------

Case Features

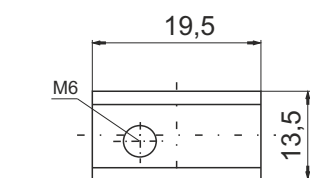
Cell configuration	Right+
Cell layout	14

Technology

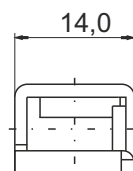
Technology	CA/CA
Separator	AGM
Recommended charging current	1,3A
Mounting Angle	360°



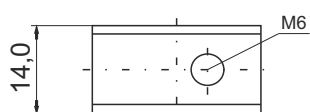
Type of terminal



Front View

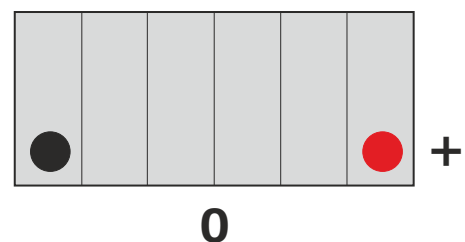


Side View



Top View

Cell configuration



The date of issue of catalog card: 03/2018

X-ON Electronics

Largest Supplier of Electrical and Electronic Components

Click to view similar products for [Sealed Lead Acid Battery](#) category:

Click to view products by [BPOWER](#) manufacturer:

Other Similar products are found below :

[1109004](#) [0809-0012](#) [0819-0012](#) [0850-0004](#) [0859-0012](#) [0800-0004](#) [LC-R0612P](#) [PS-1250F1](#) [APCRBC123](#) [APCRBC124](#) [LCRA1212P](#) [NP12-12](#) [NP12-6](#) [NP3.2-12](#) [LC-P0612P](#) [LC-R063R4P](#) [LC-R067R2P1](#) [LC-R121R3P](#) [LC-R0612P1](#) [LC-R127R2P1](#) [LC-X1220AP](#) [UP-VW1245P1](#)
[2320296](#) [2320306](#) [2320319](#) [2320322](#) [2320335](#) [2320416](#) [2320429](#) [2908237](#) [RBC32](#) [RBC11A](#) [RBC36-SLT](#)