

# BPOWER®

## Bpower EXCELLENT YP20-3

INNOVATIVE AGM TECHNOLOGY 12V - FACTORY ACTIVATED

### Parameters

Voltage	12V
Capacity	18Ah
Current	330A

### Dimensions

Length	176mm
Width	87mm
Height	154mm

### Weight

With electrolyte	6,60kg
------------------	--------

### Case Features

Cell configuration	Right+
Cell layout	14

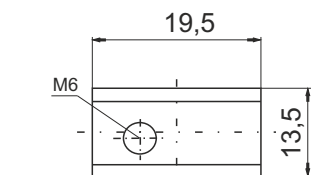
### Technology

Technology	CA/CA
Separator	AGM
Recommended charging current	1,8A
Mounting Angle	360°

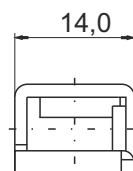


### Type of terminal

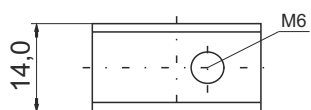
### Cell configuration



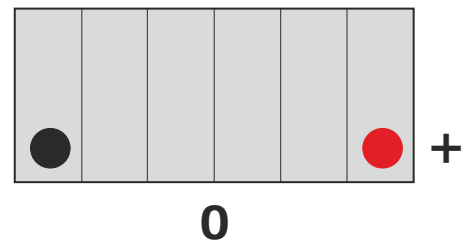
Front View



Side View



Top View



The date of issue of catalog card: 03/2018

## X-ON Electronics

Largest Supplier of Electrical and Electronic Components

*Click to view similar products for [Sealed Lead Acid Battery](#) category:*

*Click to view products by [BPOWER](#) manufacturer:*

Other Similar products are found below :

[1109004](#) [0809-0012](#) [0819-0012](#) [0850-0004](#) [0859-0012](#) [0800-0004](#) [LC-R0612P](#) [PS-1250F1](#) [APCRBC123](#) [APCRBC124](#) [LCRA1212P](#) [NP12-12](#) [NP12-6](#) [NP3.2-12](#) [LC-P0612P](#) [LC-R063R4P](#) [LC-R067R2P1](#) [LC-R121R3P](#) [LC-R0612P1](#) [LC-R127R2P1](#) [LC-X1220AP](#) [UP-VW1245P1](#)  
[2320296](#) [2320306](#) [2320319](#) [2320322](#) [2320335](#) [2320416](#) [2320429](#) [2908237](#) [RBC32](#) [RBC11A](#) [RBC36-SLT](#)