

4

3

2

1

D

D

C

C

B

B

A

A

800 SERIES

8 XX

POSITIONS

- 08
- 14
- 16
- 18
- 20
- 22
- 24 (.600 t)
- 28
- 32
- 36
- 40
- 42
- 48
- 64

24 (.300 t)

24 (.400 t)

AX

AG = INSULATOR W/OUT RAILS

AR = Insulator with RAILS

XXX

X

ESX

LF

MATTE TIN PLATING

ES CONTACT - 30 MICRO GOLD 4 BEAM STAMPED

ESL CONTACT - 10 MICRO GOLD 4 BEAM STAMPED

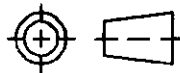
SM= SURFACE MOUNT

LSG STYLE & TAIL CONFIGURATION

10 = gold/gold

11 = gold/tin-lead or tin

12 = tin-lead/tin-lead or tin/tin



THIRD ANGLE PROJECTION

UNLESS OTHERWISE SPECIFIED DIMENSIONS ARE IN INCHES DO NOT SCALE PRINT

ORIGINAL DATE OF DRAWING: 8-31-87

TYCO ELECTRONICS

TOLERANCES (EXCEPT AS NOTED)
ANGULAR = ±1/2°
DECIMAL .XX = ±.01
DECIMAL .XXX = ±.002
DECIMAL .XXXX = ±.0005

FILE NAME: BSMSERS1
DIRECTORY: PNCODEAS

DRAWN: J.P.PACHECO
DATE: 8-31-87

TITLE: ASSEMBLY, SOCKET SURFACE MOUNT-LF

MATERIAL: NONE

CHECKED: DATE:

DWG. NO. 1825046
REV. A

FINISH: NONE

APPROVED: A.J.C.
DATE: 6-2-92

PRODUCT CODE: 25/157
SCALE: NONE SHEET 1 OF 3

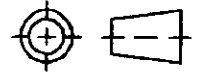
CODE IDENT. NO. 91506
DWG. SIZE B

NEXT ASSY:

(AG) INSULATORS
(NO RAILS)

SEE SHEET #6

POS.	INSULATOR ITEM 1	QTY.	FIGURE	DIM. "A"	DIM. "B"	DIM. "C"	TUBE #	TUBE QTY.	QTY OF	
									CONTACT ASS'Y	125 P.C. TAIL PAGE 6 ITEM 2
8		1	1	.400 MAX	.400 MAX	.295/.305				
14		1	2	.700 MAX	.400 MAX	.295/.305				
16		1	2	.800 MAX	.400 MAX	.295/.305				
18		1	2	.900 MAX	.400 MAX	.295/.305				
20		1	2	1.000 MAX	.400 MAX	.295/.305				
22		1	2	1.100 MAX	.500 MAX	.395/.405				
24		1	2	1.200 MAX	.700 MAX	.595/.605				
24		1	2	1.200 MAX	.500 MAX	.395/.405				
24		1	2	1.200 MAX	.400 MAX	.295/.305				
28		1	3	1.400 MAX	.700 MAX	.595/.605				
32		1	3	1.600 MAX	.700 MAX	.595/.605				
36		1	3	1.800 MAX	.700 MAX	.595/.605				
40		1	3	2.000 MAX	.700 MAX	.595/.605				
42		1	3	2.100 MAX	.700 MAX	.595/.605				
48		1	3	2.400 MAX	.700 MAX	.595/.605				
64		1	3	3.200 MAX	1.000 MAX	.895/.905				

REV	SEE SHEET #1	 THIRD ANGLE PROJECTION	UNLESS OTHERWISE SPECIFIED DIMENSIONS ARE IN INCHES DO NOT SCALE PRINT		ORIGINAL DATE OF DRAWING: 8-31-87	TYCO ELECTRONICS		
			TOLERANCES (EXCEPT AS NOTED) ANGULAR = ±1/2° DECIMAL .XX = ±.01 DECIMAL .XXX = ±.002 DECIMAL .XXXX = ±.0005	FILE NAME: 8SMSERSS	DIRECTORY: PNCODEAS		DRAWN: J.P.PACHECO	DATE: 8-31-87
				MATERIAL: NONE		CHECKED:	DATE:	DWG. NO. 1825046
				FINISH: NONE		APPROVED: A.J.C.	DATE: 6-2-92	REV. A
				CODE IDENT. NO. 91506	DWG. SIZE B	PRODUCT CODE: 25/157		
				NEXT ASSY:		SCALE: NONE SHEET 2 OF 3		

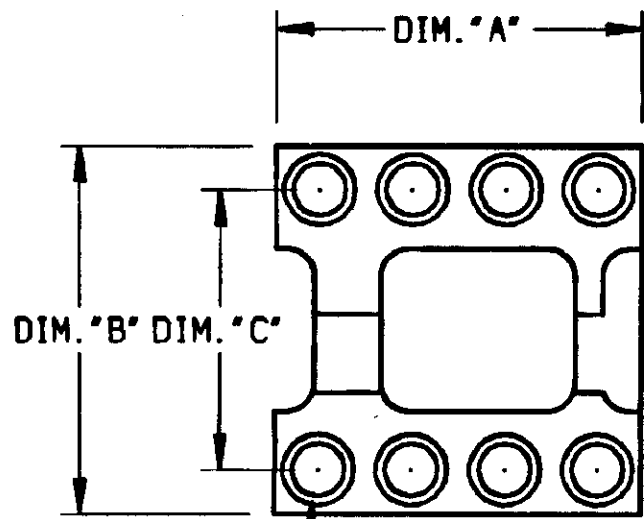


FIG. 1

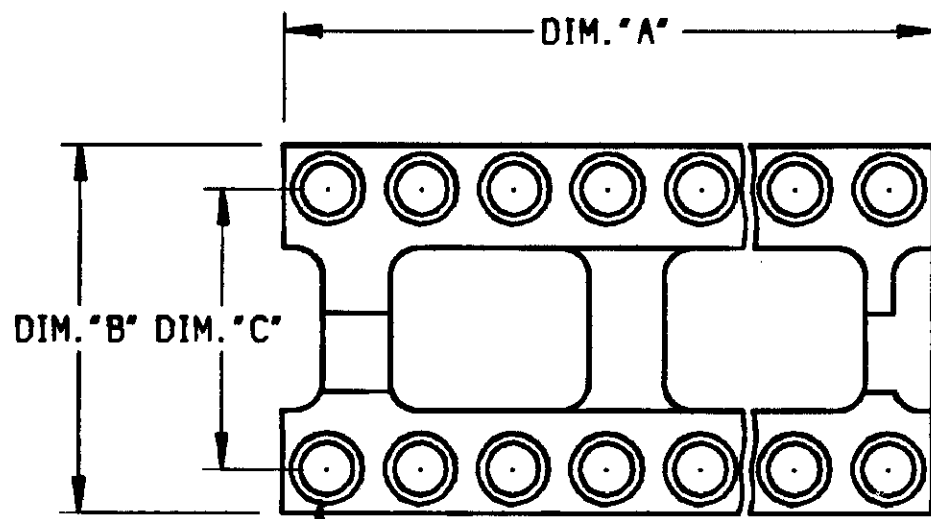


FIG. 2

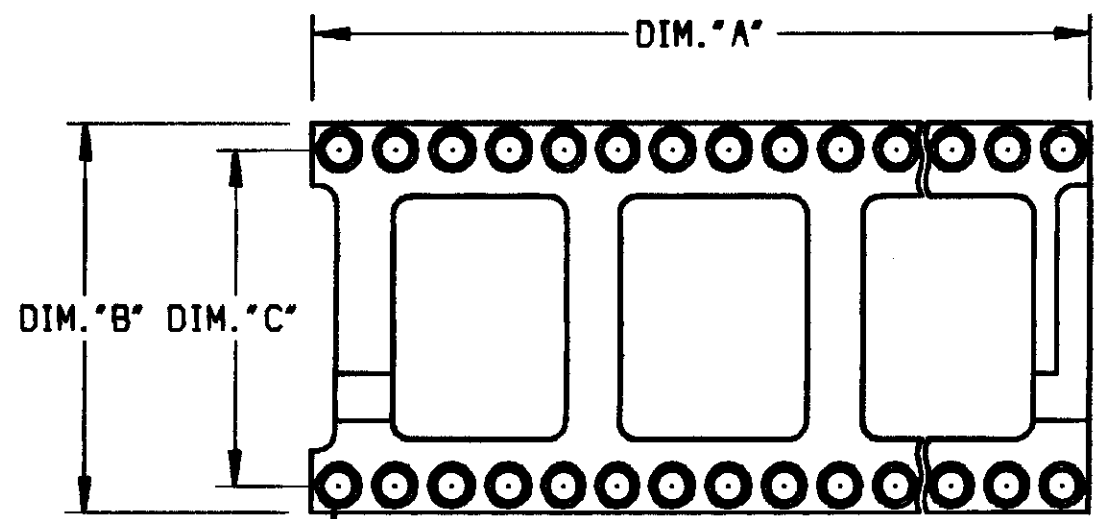
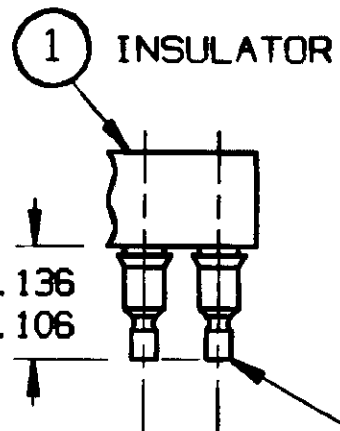


FIG. 3



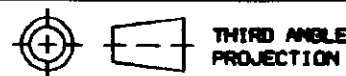
(2) CONTACT ASS'Y

"X" SURFACES =
QTY. OF CONTACT ASS'Y.
VIEW D-D

ITEMS:

MATERIAL & FINISH:

- INSULATOR - THERMOPLASTIC POLYESTER (BLACK) P E T RATED 94V-0. (SEE FIGURE COLUMN ABOVE).



THIRD ANGLE
PROJECTION

UNLESS OTHERWISE SPECIFIED
DIMENSIONS ARE IN INCHES
DO NOT SCALE PRINT

TOLERANCES (EXCEPT AS NOTED)
ANGULAR = ±1/2°
DECIMAL .XX = ±.01
DECIMAL .XXX = ±.002
DECIMAL .XXXX = ±.0005

FILE NAME: 85NSERS6
DIRECTORY: PNCODEAS

MATERIAL:
NONE

FINISH:
NONE

ORIGINAL DATE
OF DRAWING: 8-31-87

DRAWN: J.P. PACHECO
DATE: 8-31-87

CHECKED:
DATE:

APPROVED: A.J.C.
DATE: 6-2-92

CODE IDENT. NO. 91506
DMG. SIZE B

NEXT ASSY:

TYCO ELECTRONICS

TITLE:
ASSEMBLY, SOCKET
SURFACE MOUNT-LF

DMG. NO. 1825046
REV. A

PRODUCT CODE: 25/157
SCALE: NONE SHEET 3 OF 3

REV
REVISIONS

SEE SHEET #1

X-ON Electronics

Largest Supplier of Electrical and Electronic Components

Click to view similar products for te connectivity manufacturer:

Other Similar products are found below :

[4-1633138-8](#) [570416-000](#) [CLTEQ-M81CE-SSRELAY-4-20V](#) [D38999/24FJ4AN](#) [4-1195131-0](#) [650069-000](#) [SMD100-2](#) [CB-1022B-78](#)
[RM707012](#) [RP410012](#) [MMS42](#) [1-640426-8](#) [2EDL4CM](#) [DTS20W19-11PD-3028-LC](#) [RM202615](#) [NC6-P104-06](#) [MSPS103B](#) [DTS26F21-](#)
[41HE-LC](#) [DTS26F21-41AE](#) [DTS26F21-41PE-LC](#) [DTS26F21-11SE-3028-LC](#) [1932144-1](#) [293545-4](#) [LVR125S](#) [MS27466T25F4PB](#) [CKB-38-](#)
[78010](#) [1206SFF150F/63-2](#) [D38999/20JB35HA](#) [D38999/24WJ20PA](#) [TE1500A2R2J](#) [DTS24F25-29PC-3028-LC](#) [D38999/24WG11HA](#)
[D38999/24WG11HN](#) [MS27467T21F11H](#) [DJT16E21-11HA](#) [1206SFH150F/24-2](#) [DTS24F19-11SC-3028-LC](#) [DTS24F21-41HN-LC](#)
[DTS24F21-41AN](#) [DTS24F21-41PN-LC](#) [RP330024](#) [MS27467T21F35J](#) [MS27467T21F11J](#) [MS27467T21F16H-LC](#) [MS27467T21F35H](#)
[MS27467T21F41H-LC](#) [DJT16E21-11PA-LC](#) [DJT16E21-11HA-LC](#) [DJT16E21-11AA](#) [MS27467T21B11JA](#)