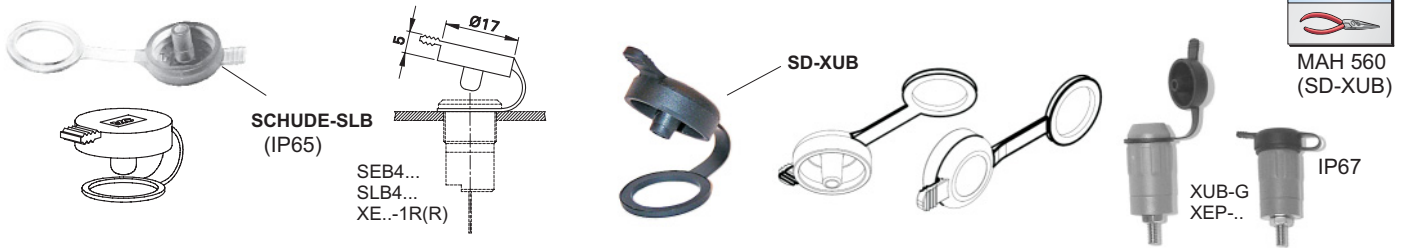


**Weiteres Buchsenzubehör  
Schutzdeckel**

**Further Socket Accessories  
Protective Caps**

**Accessoires divers pour douilles  
Couvercles de protection**

**SCHUDE-SLB SD-XUB**



Schutzdeckel zum Verschluss von Buchsen im unbeschalteten Zustand.

Protective cap to cover-up unplugged, unused sockets.

Couvercle de protection pour obturer des douilles à l'état non connecté.

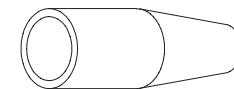
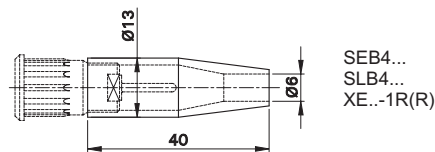
Typ Type Type	Best.-Nr. Order No. N° de Cde	Geeignet für Buchsentyten Suitable for socket types Douilles correspondantes	Schutzart Protection degree Degré de protection	Farbe Colour Couleur
<b>SCHUDE-SLB</b>	<b>23.5140-33</b>	SEB4..., SLB4..., XE...-1R(R)	IP65	<b>33</b>
<b>SD-XUB</b>	<b>66.1020-21</b>	XUB-G, XEP...	IP67	<b>21</b>

**Schutzkappen**

**Safety Hoods**

**Capuchons de protection**

**SCHUKA-SLB**



Schutzkappe als Schutz vor Berührung des rückseitigen Buchsenanschlusses.

Safety hood, designed for a touch-protected cover-up of connecting parts of sockets.

Capuchon de protection pour la protection au toucher de la partie raccordement des douilles.

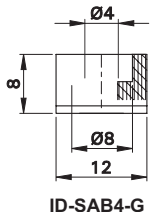
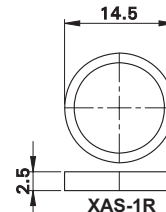
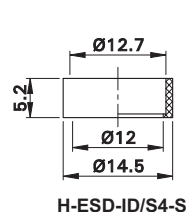
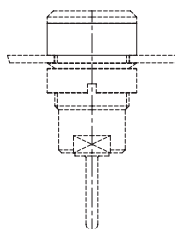
Typ Type Type	Best.-Nr. Order No. N° de Cde	Geeignet für Buchsentyten Suitable for socket types Douilles correspondantes	Farbe Colour Couleur
<b>SCHUKA-SLB</b>	<b>23.5142-33</b>	SEB4..., SLB4..., XE...-1R(R)	<b>33</b>

**Distanzhülsen**

**Spacer Sleeves**

**Entretoises**

**XAS-1R ID-SAB4-G H-ESD-ID/S4-S**



Distanzhülsen zum erhöhten Aufbau von Buchsen und Dosen.

Spacer sleeves to increase the height of the mounting position of sockets and receptacles.

Entretoises pour le montage en saillie des douilles et embases.

Typ Type Type	Best.-Nr. Order No. N° de Cde	Geeignet für Buchsentyten Suitable for socket types Douilles correspondantes	*Farben *Colours *Couleurs
<b>XAS-1R</b>	<b>66.9151-*</b>	SEB4..., SLB4..., XE...-1R(R)	<b>21 22 23 24 25</b> 26
<b>ID-SAB4-G</b>	<b>23.5039-*</b>	SAB4-G...	<b>21 22 23 24 25</b> 26 27 28 29
<b>H-ESD-ID/S4-S</b>	<b>24.5184-24</b>	ESD-ID/S4-S, SLB4-T/N-S	<b>24</b>

## X-ON Electronics

Largest Supplier of Electrical and Electronic Components

*Click to view similar products for [staubli](#) manufacturer:*

Other Similar products are found below :

[23.3070-21,+ -22,+ -23,+ -24,+ -25](#) [66.9706-21](#) [63.9358-22](#) [49.0126-05023](#) [49.0126-20024](#) [28.0124-20029](#) [22.2633-23](#) [23.3020-28](#) [66.9407-05028](#) [49.7049-24](#) [23.0480-21](#) [62.7433-91021](#) [60.7008-999-21](#) [61.7664-999-23](#) [61.7612-100-22](#) [14.0034-29](#) [61.7554-25](#) [60.7015-22](#) [23.1031-21](#) [23.0440-21](#) [24.0224-21](#) [65.9098-21](#) [64.9214-2122](#) [23.3060-24](#) [67.9799-22](#) [61.7607-29](#) [25M](#) [23.3120-28](#) [49.0126-05024](#) [49.0126-05025](#) [49.0079-05023](#) [66.9392-15022](#) [66.9407-05027](#) [66.9408-10028](#) [67.9770-100-21](#) [61.7611-100-33](#) [60.7018-100-21](#) [28.0116-05024](#) [66.9328-25](#) [23.0050-21](#) [65.3314-21,+ -22,+ -23,+ -24,+ -25,+ -29](#) [22.3006-21](#) [28.0055-05024](#) [23.3120-20](#) [49.0126-02525](#) [28.0126-05024](#) [28.0126-20020](#) [28.0124-05020](#) [28.0125-05021](#) [28.0125-20023](#) [68.9434-23](#)