



American Electronic Components, Inc.

1101 Lafayette Street, Elkhart, IN 46516, Tel: (574) 295-6330, Fax: (574) 293-8013, sales@aecsensors.com

DURAKOOL Series BFL (Open) 35 Amps

3 POLE

These 35 Amp general purpose contactors offer additional load capacity as well as long contact-life performance. Top/bottom compression lug termination style allows easy connection to heavier leadwire (up to #4 AWG Copper).

Both BFL (normally open) and BBL (normally closed) are available in 1, 2, or 3 pole configurations, and feature low, stable contact resistance.

SPECIFICATIONS

Maximum Time:	Operate	Release
Normally Open:	70 ms	90 ms
Normally Closed:	150 ms	200 ms
Contact Bounce, Release:	None	
Recommended DC Load Polarity:	Top Connector Negative	
Load Connectors:	Pressure Connector #4-14 AWG Cu.	
Coil Terminals:	#6-32 Wire Binding Screw, Max. #12 AWG Cu.	
Breakdown Voltage:	5000 VRMS/Min. Across Contacts	



DESCRIPTION	Volts	Part No.	Typical Coil Data		
			DC Ohms	Watts	Amps
3 Pole	24	BFL3-7023	5	11.10	1.270
	120	BFL3-7024	135	9.20	0.220
	208	BFL3-7025	480	8.70	0.111
	240	BFL3-7026	520	9.20	0.109
	277	BFL3-7027	830	8.10	0.081
	480	BFL3-7028	2100	9.40	0.055
	12 (DC)	BFL3-7037	12.8	11.20	0.938
	24 (DC)	BFL3-7038	51	11.30	0.470

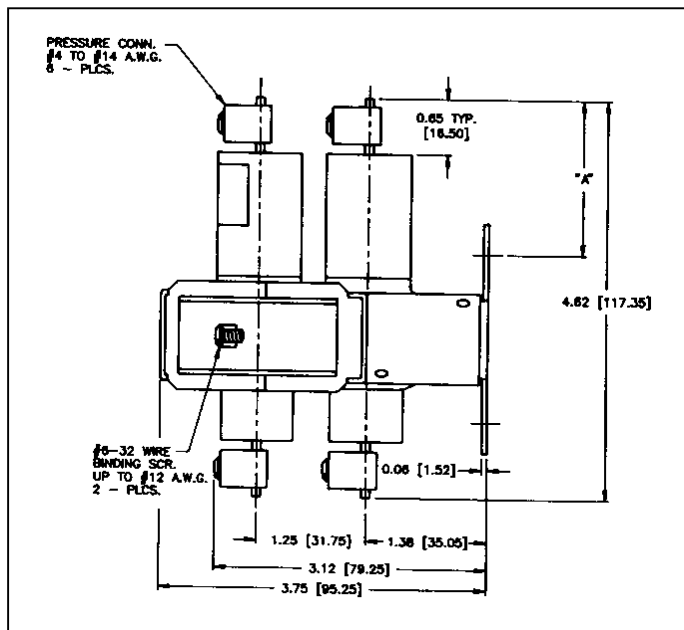
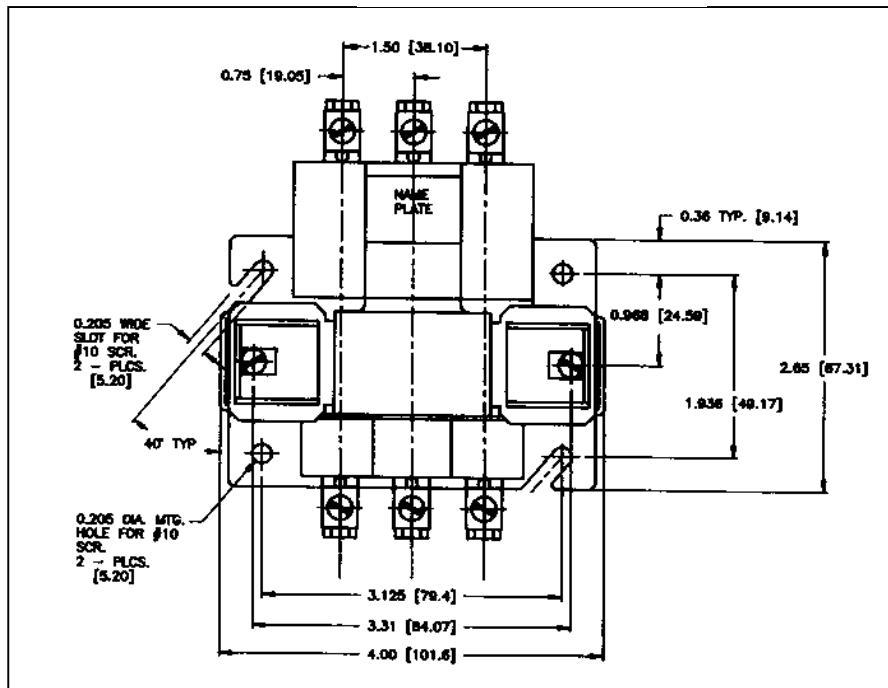
ELECTRICAL RATINGS	GENERAL PURPOSE 0.7/0.8 UL Power Factor						DC			Tungsten Lamp/60 Hz	AC MOTOR LOAD			
	Volts	120	208	240	277	480	600	1-48	120	240	120	1 Phase		3 Phase
SERIES	60 Hz Amps						DC Amps			Amps	KW	Hp	Hp	Hp
BFL 35 (Normally Open)	35	35	35	35	35	15	35	25	15	30	3.6	2.0	3.0	5.0
BBL 35 (Normally Closed)	30	22	20	18	10	8	30	20	10	20	2.4	1.5	2.0	3.0

American Electronic Components, Inc.

1101 Lafayette Street, Elkhart, IN 46516, Tel: (574) 295-6330, Fax: (574) 293-8013, sales@aecsensors.com

DURAKOOL Series BFL (Open) 35 Amps

3 POLE



X-ON Electronics

Largest Supplier of Electrical and Electronic Components

Click to view similar products for [durakool](#) manufacturer:

Other Similar products are found below :

[SDA3Z-30K-A](#) [DFC3-301](#) [DG85B-8011-75-1012](#) [DM84-2012-35-1012](#) [SDA1Z-40K-D](#) [DHS02](#) [DM85-2011-35-1012](#) [SDA1Z-15K-D](#)
[SRA1Z-25K-D](#) [SRA2Z-40K-D](#) [SRA3Z-60K-D](#) [DM84-2012-35-5012](#) [SDA3Z-30K-D](#) [SDA1Z-80K-A](#) [SDA1Z-80K-D](#) [SRA3Z-80K-D](#) [A1/2-](#)
[001](#) [DM84-2012-35-1024](#) [SIM212-12VDC](#) [SRA1Z-10K-D](#) [SRA3Z-60K-A](#) [SRA1Z-40K-D](#) [SRA1Z-60K-A](#) [SRA1Z-40K-A](#) [SRA1Z-10K-A](#)
[DTP1](#) [SRA1Z-40L-A](#) [DG85B-8011-76-1024](#) [5002](#) [SRA1Z-25K-A](#) [SIM112 16VDC](#) [SRA1Z-60K-D](#) [DG20-8011-35-1012](#) [DG85CM-](#)
[5021-76-1012](#) [SRA1Z-100K-A](#) [DG85B-8011-96-1006-M1](#) [SRA1Z-15L-D](#) [SRA1Z-25L-A](#) [SRA1Z-80K-A](#) [SRA1Z-25L-D](#) [SRA1Z-100K-D](#)
[SRA1Z-60L-D](#) [SRA1Z-80L-D](#) [SRA1Z-15L-A](#) [SRA1Z-40L-D](#) [DG85B-8011-96-1012-M1](#) [SRA1Z-100L-D](#) [SRA1Z-60L-A](#) [SRA1Z-80L-A](#)
[SRA1Z-15K-A](#)