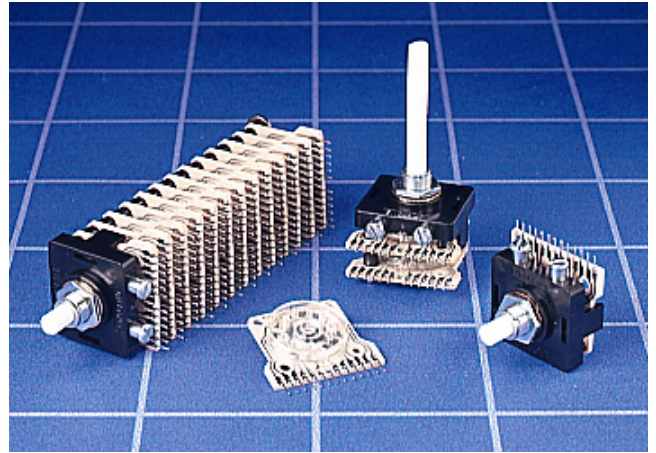


PT ROTARY SWITCH

RoHS COMPLIANT

GENERAL ELECTRICAL & MECHANICAL SPECIFICATION

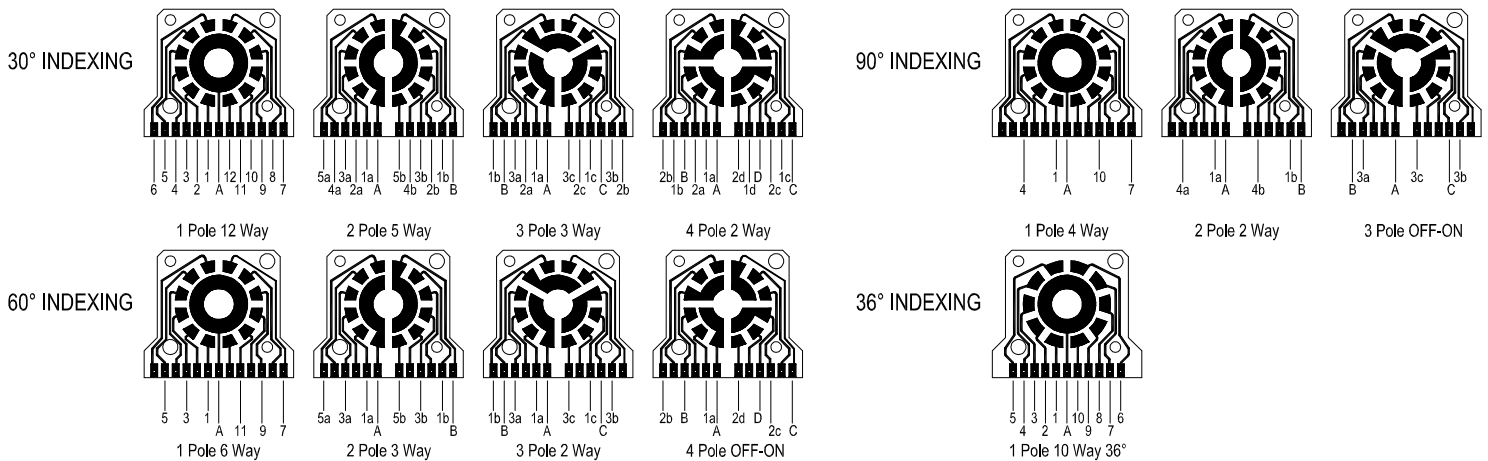
Switch Rating :	500mA @ 250V ac/dc
Life:	>10,000 Cycles
Operating Temperature:	-30°C to +85 °C
Proof Voltage:	1,000Vac (Initial)
Insulation Resistance:	>999 MΩ at 500Vdc (Initial)
Contact Resistance:	<50 mΩ (Initial)
Operating Torque (nominal)	Standard 5.6 cNm
End Stop Torque (minimum):	0.80 Nm
Wafer Circuit Board:	Epoxy Glass Fibre
Housing/Bush:	Polyester G.F. (PBT) V0 Rated
Spindle:	Acetal Copolymer
Moving Contact:	Phosphor Bronze Ag Plated
P/C Track:	Copper, Ag Plated
Terminals:	Brass, CZ108, Sn Plated
Contact Carrier:	Polycarbonate



GENERAL FEATURES

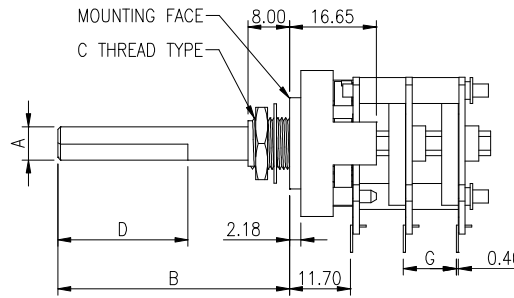
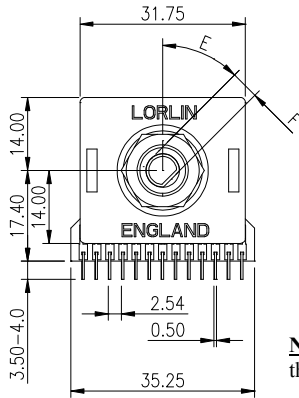
- Made in UK
- Multi wafer PCB switch.
- Standard 30° indexing
- P.C. Terminals on 2.54mm pitch
- Shorting MBB (only 30° indexing or Non Shorting BBM contacts
- Standard insulated spacers (6.35mm/7.63mm/10.16mm)
- **Special options:** 36°, 60° or 90° indexing, gold flashed or gold Plated contacts (2.5 microns gold over 2 microns silver over 2 microns nickel).
- Adjustable stop, base mounting with brass fixing bush, spindles with special flats non-standard wafer spacers.

PC TERMINAL LAYOUTS VIEWED FROM KNOB END OF SPINDLE



No. Of Poles	MAXIMUM NUMBER OF POSITIONS (WAYS) PER WAFER			
	30 ° Index	36 ° Index	60 ° Index	90 ° Index
1	12 No Stops	10	6	4
2	5	-	3	2
3	3	-	2	OFF-ON
4	2	-	OFF-ON	-

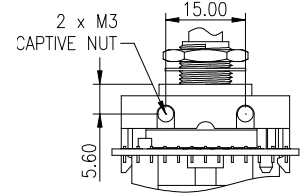
PT ROTARY SWITCH



Note: OPTIONAL SPINDLE FLAT SHOWN. The Angle of the spindle flat is shown when the switch is set in the fully anti-clockwise position (ie position 1) viewed from the knob end on the spindle.

BASE MOUNT OPTION

Base mounting option.
Necessary spacers are supplied when this option is specified.



TO SPECIFY PART NUMBERS FOR SINGLE WAFER SWITCHES

CIRCUITRY AT 30° INDEXING	STANDARD METRIC		STANDARD IMPERIAL	
	Shorting (MBB)	Non Shorting (BBM)	Shorting (MBB)	Non Shorting (BBM)
1 Pole 12 positions	PT6034	PT6003	PT6172	PT6015
1 Pole 12 Positions – No Stop	-	PT6002	-	PT6014
2 Pole 5 Positions	PT6035	PT6004	PT6474	PT6016
3 Pole 3 Positions	-	PT6005	-	PT6017
4 Pole 2 Positions	-	PT6006	-	PT6018
1 Pole 10 Positions (circuitry at 36° indexing)	-	PT6461	-	PT6462

STANDARD DIMENSIONS

	A	B	C	D	E	F	G
	SPINDLE DIAMETER	SPINDLE LENGTH	BUSH THREAD	SPINDLE FLAT LTH	SPINDLE ANGLE	SPINDLE FLAT DP	SPACER LENGTH
IMPERIAL	6.35mm	50mm	9.52 x 32TPI	No Flat	-	(5.5mm)	-
METRIC	6.0mm	50mm	M10 x 0.75	No Flat	-	(5.0mm)	-

ORDERING CODE FOR NON-STANDARD SWITCHES



BASE MOUNTING
HARDWARE
B = Fitted
O = Not Required

Moulded Spacers
Between Wafers
B=6.35mm C=7.63mm
D=10.16mm

Spindle
Length(B) FMM
Full mm ≥50mm

No. of WAFERS			
A	1	M	11
B	2	N	12
C	3	P	13
D	4	R	14
E	5	S	15
F	6	T	16
G	7	U	17
H	8	V	18
K	9	W	19
L	10		

INDEX ANGLE & No of POLES		
A	30°	1 Pole
B		2
C		3
D		4
E	60°	1 Pole
F		2
G		3
H		4
I	90°	1 Pole
J		2
K		3
L	36°	1 Pole

No of WAYS (POSITIONS)	
A	2
B	3
C	4
D	5
E	6
F	7
G	8
H	9
I	10
J	11
K	12
L	OFF/ON

	MBB OR BBM	CONTACT PLATING
A	BBM	SILVER
B	MBB	PLATE
C	BBM	GOLD
D	MBB	PLATE
E	BBM	GOLD
F	MBB	FLASH

	Spindle Ø (mm)	Spindle Depth (mm)	Bush Ø (mm)
A	6.0	Nil	M10
B	6.0	5.0mm	M10
C	6.35	Nil	9.52
D	6.35	5.5	9.52

LENGTH OF SPINDLE FLAT (mm)		
A	3	N 16
B	4	P 17
C	5	Q 18
D	6	R 19
E	7	S 20
F	8	T 21
G	9	U 22
H	10	V 23
I	11	W 24
J	12	X No Flat
K	13	
L	14	Z Full Flat
M	15	

ANGLE OF FLAT		
A	0°	N 195°
B	15°	P 210°
C	30°	Q 225°
D	45°	R 240°
E	60°	S 255°
F	75°	T 270°
G	90°	U 285°
H	105°	V 300°
I	120°	W 315°
J	135°	X No Flat
K	150°	Y 330°
L	165°	Z 345°
M	180°	

Please send drawing if your requirements cannot be fulfilled by using the ordering code
Special circuitry can be developed if required.

X-ON Electronics

Largest Supplier of Electrical and Electronic Components

Click to view similar products for [lorlin](#) manufacturer:

Other Similar products are found below :

[WRL-5-E-S-2](#) [CK1036](#) [SRL-5-D-D-2](#) [SDS37Z](#) [SRL020](#) [SKL-12-A-S-2](#) [IRL-5-K-S-2](#) [SDS9Z](#) [MTS-11-80](#) [CK1453](#) [CK1460](#) [CK1025](#)
[CK1032](#) [IRL-5-M-S-2](#) [CKS1027](#) [WRLM-5-T-S](#) [BCKS1004](#) [SDP50Z](#) [GCK1022](#) [CK1043](#) [CKS1052](#) [CK1061](#) [CK1589](#) [CK2404](#) [WRLM-5-](#)
[Q-S](#) [CK1592](#) [BCK1006](#) [CK1055](#) [SDP37Z](#) [BCK1019](#) [GCK1023](#) [CK1457](#) [CK1451](#) [GCK1026](#) [406817F](#) [CK1456](#) [CK1042](#) [BCK1020](#)
[CK1062](#) [CKAEAA1500](#) [CK1461](#) [SRL-5-E-S-2](#) [CK2379](#) [CKF1059](#) [CK1455](#) [CK1035](#) [CK2378](#) [MDSP220KN-ESAI-2-19PY](#) [CK1450](#)
[SDP25Z](#)