

REVISIONS		
REV	ECN, ERN NO.	DATE
C	PRODUCT DRAWING (EAR 13733)	JUN23/10

ORDERING CODE: F C E 1 7 - E 0 9 P N - 2 E 0 G

SERIES FCE17=FILTERED D-SUB, ROHS
 SIZE/NUMBER OF CONTACTS E09, A15, B25, OR C37
 CONNECTOR STYLE P=PIN S=SOCKET
 TERMINATION TYPE N=VERTICAL MOUNT PC TAIL, O=STANDARD
 NO DIGIT=STANDARD 15 MICRONS
 MATING AREA G=50 MICRONS [1.27 MICRONS]
 GOLD ON MATING AREA K=30 MICRONS [0.76 MICRONS]
 GOLD ON MATING AREA O=STANDARD
 CONTACT FINISH/GOLD THICKNESS
 MATING AREA
 5=1000 PF
 B=100 PF
 7=1200 PF
 6=1300 PF
 1=1500 PF
 J=2200 PF
 F=330 PF
 E=2200 PF
 L=380 PF
 1=470 PF
 8=47000 PF
 2=680 PF
 4=820 PF
 REFER TO AMPHENOL CATALOGUE FOR FILTER PERFORMANCE CHARACTERISTICS

NOTES:

- 1) MATERIALS: ALL MATERIALS ARE ROHS COMPLIANT.
- 2) CONTACT RESISTANCE: 3000 MEGOHMS MINIMUM
- 3) INSULATION RESISTANCE: 3000 MEGOHMS MINIMUM
- 4) CURRENT RATING: 5 AMPS MAXIMUM
- 5) OPERATING TEMPERATURE: -40C TO 85C
- 6) TOLERANCE ± 0.05 [0.13] UNLESS INDICATED OTHERWISE.

2) CONTACT RESISTANCE: 15 MILLIOHMS MAXIMUM

3) INSULATION RESISTANCE: 3000 MEGOHMS MINIMUM

4) CURRENT RATING: 5 AMPS MAXIMUM

5) OPERATING TEMPERATURE: -40C TO 85C

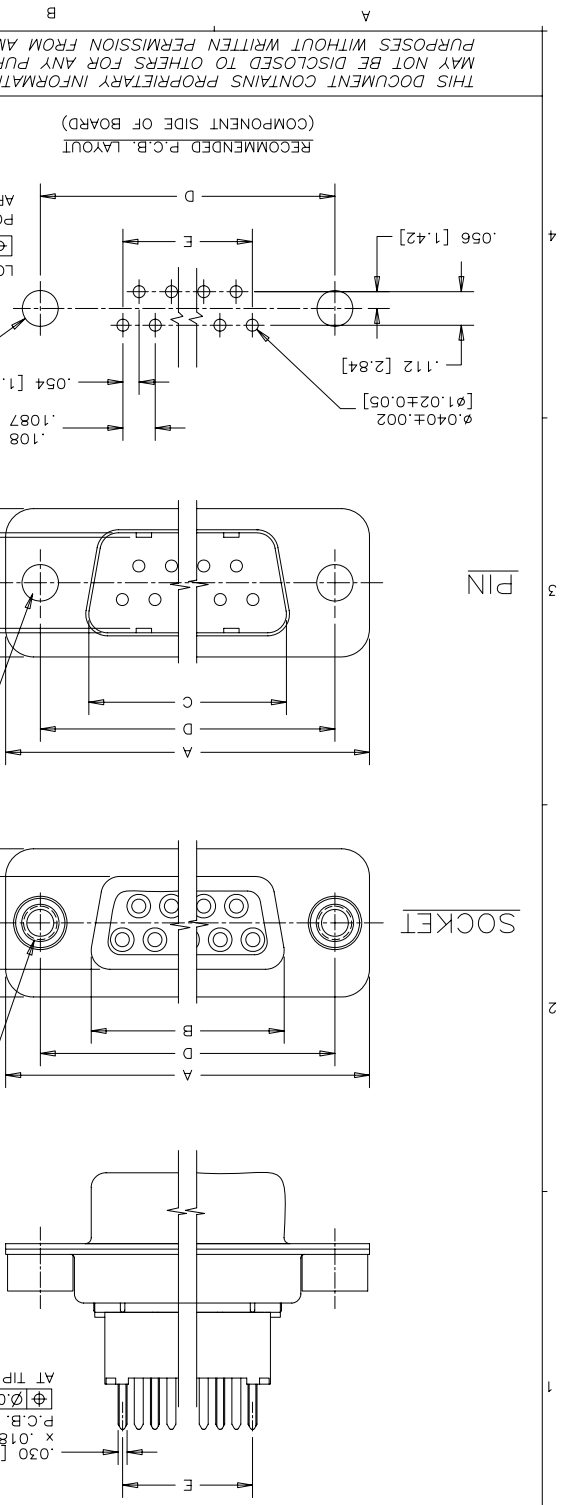
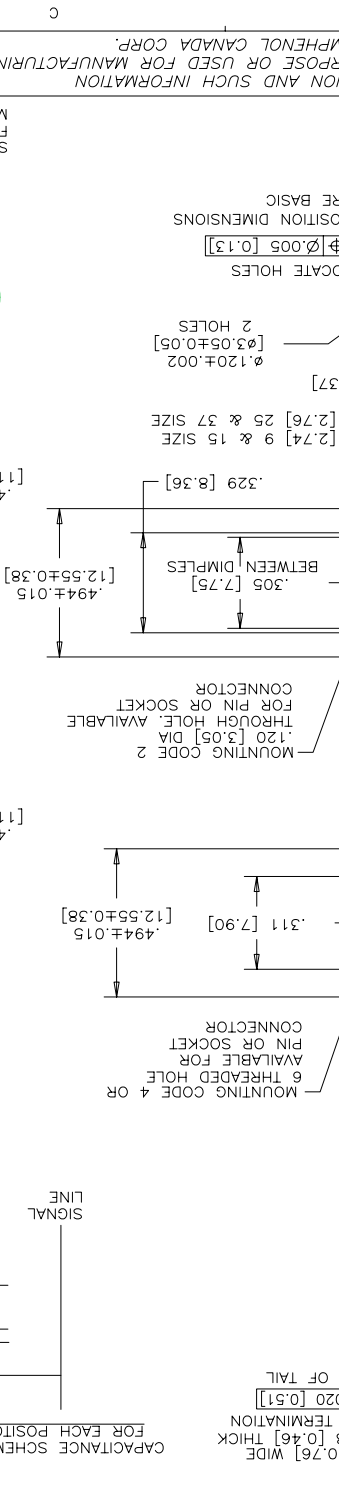
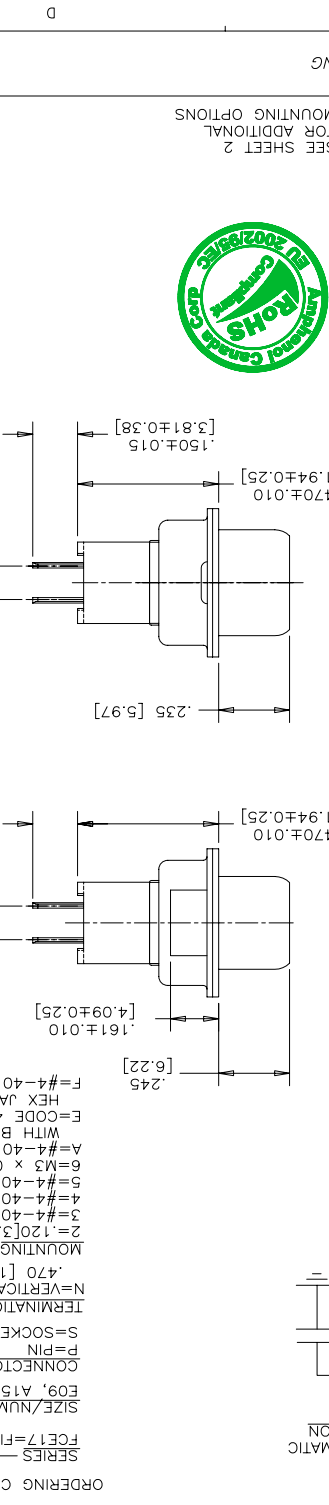
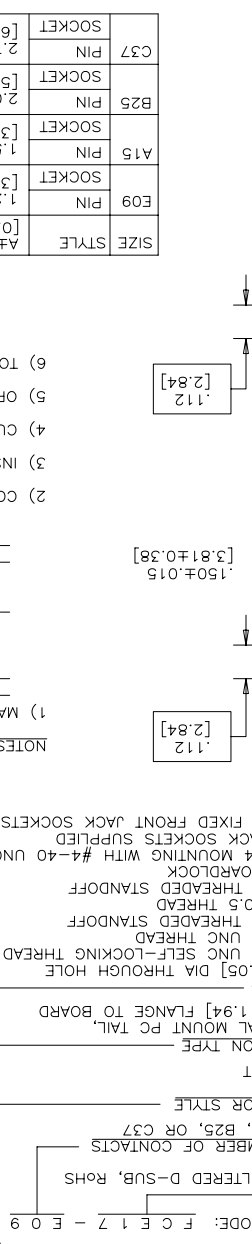
6) TOLERANCE ± 0.05 [0.13] UNLESS INDICATED OTHERWISE.

SIZE	STYLE	A ± 0.15	B ± 0.05	C ± 0.05	D ± 0.05	E BSC.
E09	PIN	1.213	0.666	1.692	0.984	4.32
E09	SOCKET	1.213	0.666	1.692	0.984	4.32
A15	PIN	1.541	0.994	2.525	1.312	7.56
A15	SOCKET	1.541	0.994	2.525	1.312	7.56
B25	PIN	2.088	1.534	3.896	1.852	13.04
B25	SOCKET	2.088	1.534	3.896	1.852	13.04
C37	PIN	2.729	2.182	5.442	2.500	19.56
C37	SOCKET	2.729	2.182	5.442	2.500	19.56

DATE	DRAWN	DESIGNED	CHECKED	L. E. APPRD.	Q. A. APPRD.	DWG. APPRD.	ENG. REL. NO.
JUN12/06	A.CHENG	JUN12/06	K.LAMBIE				

REV.	DWG	DRAWING NO.	SCALE	WT.	SURF.	SHEET	OF
C	P-FCE17-XXXXX-XXOX		3/1			1	2

REF: DIMENSIONS ARE IN INCHES [mm] 03554 EAR 12900
 ENG. REL. NO.
 DWG. APPRD.
 Q. A. APPRD.
 L. E. APPRD.
 CHECKED K.LAMBIE JUN12/06
 DESIGNED
 DRAWN A.CHENG JUN12/06



THIS DOCUMENT CONTAINS PROPRIETARY INFORMATION AND SUCH INFORMATION MAY NOT BE DISCLOSED TO OTHERS FOR ANY PURPOSE OR USED FOR MANUFACTURING PURPOSES WITHOUT WRITTEN PERMISSION FROM AMPHENOL CANADA CORP.

RECOMMENDED P.C.B. LAYOUT (COMPONENT SIDE OF BOARD)

SEE SHEET 2 FOR ADDITIONAL MOUNTING OPTIONS

LOCATE HOLES POSITION DIMENSIONS ARE BASIC

LOCATE HOLES POSITION DIMENSIONS ARE BASIC

LOCATE HOLES POSITION DIMENSIONS ARE BASIC

LOCATE HOLES POSITION DIMENSIONS ARE BASIC

LOCATE HOLES POSITION DIMENSIONS ARE BASIC

LOCATE HOLES POSITION DIMENSIONS ARE BASIC

LOCATE HOLES POSITION DIMENSIONS ARE BASIC

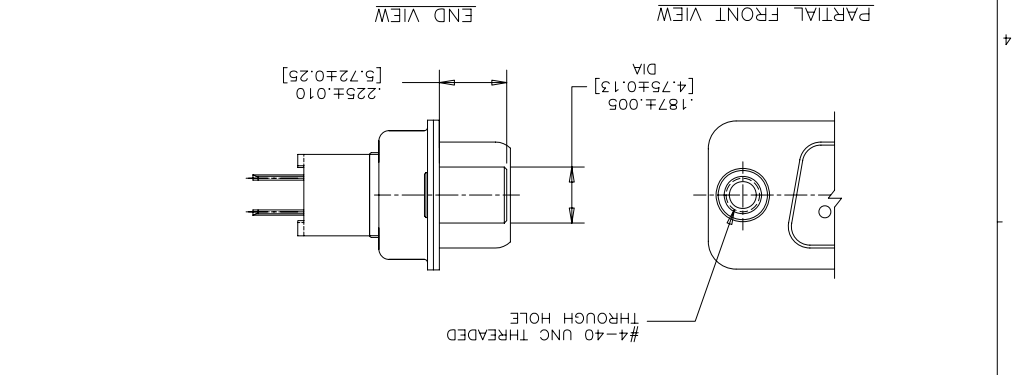
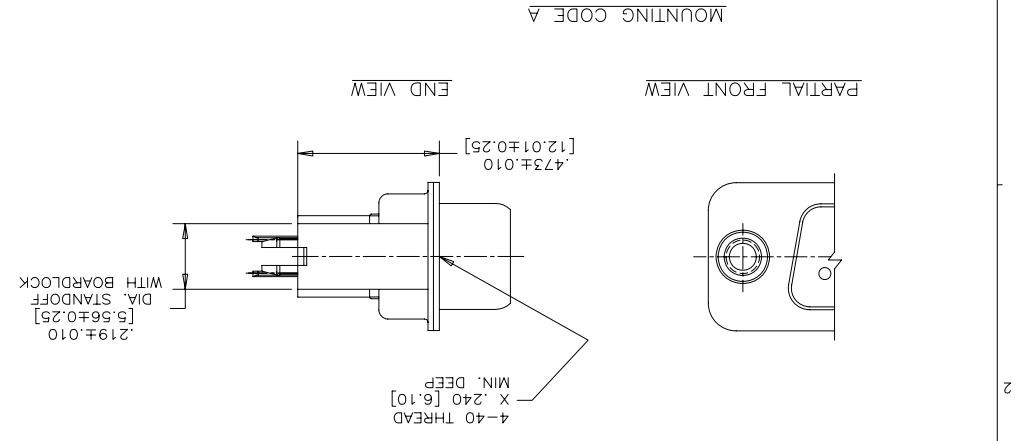
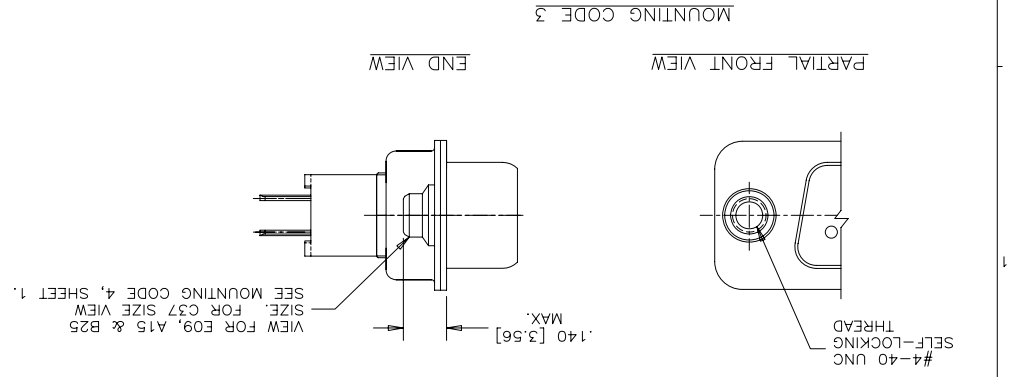
LOCATE HOLES POSITION DIMENSIONS ARE BASIC

LOCATE HOLES POSITION DIMENSIONS ARE BASIC

LOCATE HOLES POSITION DIMENSIONS ARE BASIC

REVISIONS		
REV	ECN, ERN NO.	DATE
C	PRODUCT DRAWING (EAR 13733)	JUN23/10
K.L.		

ADDITIONAL MOUNTING OPTIONS AVAILABLE FOR PIN OR SOCKET CONNECTOR



DATE	JAN12/06	DRAWN	A.CHENG
DESIGNED		CHECKED	K.LAMBIE
L. E. APPRD.			
Q. A. APPRD.			
DWG. APPRD.			
ENG. REL. NO.			
REF.	EAR 12900		
DIMENSIONS ARE IN INCHES [mm]	03554		

SCALE	3/1	WT.		SURF.	
DWG. DRAWING NO.	P-FCE17-XXXXN-XX0X				
REV	C				

FCE17 SERIES FILTERED D-SUB CONNECTOR, PIN & SOCKET, VERTICAL MOUNT P.C.B. TAIL, .470 [11.94] FLANGE TO BOARD, RoHS COMPLIANT

Amphenol Canada Corp.

THIS DOCUMENT CONTAINS PROPRIETARY INFORMATION AND SUCH INFORMATION MAY NOT BE DISCLOSED TO OTHERS FOR ANY PURPOSE OR USED FOR MANUFACTURING PURPOSES WITHOUT WRITTEN PERMISSION FROM AMPHENOL CANADA CORP.

X-ON Electronics

Largest Supplier of Electrical and Electronic Components

Click to view similar products for [D-Sub Standard Connectors](#) category:

Click to view products by [Amphenol](#) manufacturer:

Other Similar products are found below :

[DCM37S732N](#) [DAM15P500](#) [DEV09S364GTLF](#) [DEM09P032N](#) [DDM50P732N](#) [DAM15S332N](#) [173109-2218](#) [173109-2466](#) [173109-2436](#)
[173109-2435](#) [56F706-005-LI](#) [56F711-015](#) [015-0341-000](#) [015-0372-008](#) [015-8544-011](#) [017041-0005](#) [020419-0104](#) [012-0515-000](#) [012-9507-](#)
[034](#) [012-9507-114](#) [012-9534-001](#) [020745-0008](#) [609-25P](#) [M24308/2-23Z](#) [M243082310F](#) [M243082410F](#) [M243082411F](#) [M24308/4-21](#)
[CT1A18-11PSA206](#) [CT1N36-5SC](#) [CT2-16S-17PS](#) [CT2-20-15PCAU](#) [CT2-24-12PS](#) [CT2-24-28PSF127A206](#) [CT2-32-9PC](#) [CT6F9767-14-4-](#)
[14S-5PC](#) [CT6FA10SL-4PS](#) [CT7-18-10SC](#) [CT7-18-10SCAU](#) [CT7-18-12SCAU](#) [CT7-18-1PC](#) [CT7-18-1PCAU](#) [CT7-18-21SCAU](#) [M83513/01-](#)
[FC](#) [M83723/76W24619 L/C](#) [M85049/48-3-2F](#) [69001-865](#) [6STD09PCM99B70X](#) [6STD09SCM99B30X](#) [6STD09SCT99S40X](#)