

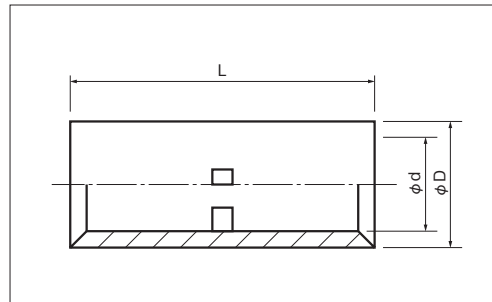
SLEEVES (B TYPE)

A

■ BUTT

JIS C 2806

■ BUTT CONNECTOR



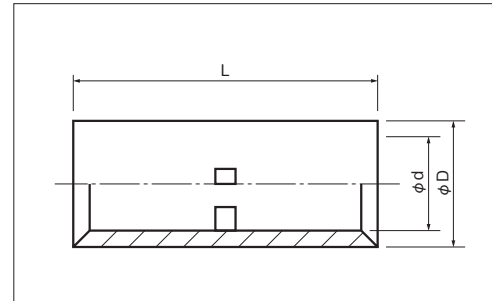
PART NUMBER	DIMENSIONS mm			WIRE RANGE			TOOL No.		STD QTY/BOX
	L	φD	φd	SOLID mm	STRANDED mm ²	AWG MCM	HAND · HYDRAULIC	TOOL BODY No. / DIES No.	
B 0.5 ○	11.5	2.6	1.4	0.57~0.7	0.25~0.75	22-18	NH 1 NH 69 NH 60 NH 61 NH 9 NH 150, NOM 150HA NOH 300K See page 126 For the die part number to use with NA 10, NA20 or NA 3.	1000 (100×10)	
B 1.25 ●		3.3	1.8	0.57~1.44	0.25~1.65	22-16			
B 2 ●		4.1	2.3	1.14~1.82	1.04~2.63	16-14			
B 5.5 ●		5.4	3.5	1.82~2.89	2.63~6.64	12-10			
B 8 ●	21.0	7.0	4.5	2.89~3.65	6.64~10.52	8			
B 14 ●	26.0	8.9	5.8		10.52~16.78	6			
B 22 ●	29.0	11.3	7.7		16.78~26.66	4			
B 38 ●	32.0	13.2	9.4		26.66~42.42	2			
B 60 ●	36.0	15.3	11.4		42.42~60.57	1/0			
B 70 ○		17.5	13.3		60.57~76.28	2/0			
B 80 ●	38.0	19.5	14.5		76.28~96.3	3/0			
B 100 ●		22.1	16.4		96.3~117.2	4/0			
B 150 ●	54.0	26.4	19.5		117.2~152.05	250-300MCM			
B 180 ○	55.0	28.5	21.0		152.05~192.6	300-350MCM			
B 200 ●	63.0	32.4	24.0		192.6~242.27	400MCM			
B 250 ○	72.0	35.0	26.5		250	-			
B 325 ●		37.0	28.0		242.27~325	500-600MCM			

NOTE

- 1) ● : JIS, UL, CSA ○ : UL, CSA
- 2) Refer to page 12 for UL/CSA and proper strip length of wire.

■ BUTT (EXTRA LONG)

■ BUTT CONNECTOR



PART NUMBER	DIMENSIONS mm			WIRE RANGE			TOOL No.	STD QTY/BOX
	L	φD	φd	SOLID mm	STRANDED mm ²	AWG MCM		
B 60-72L	72.0	15.3	11.4		42.42~60.57	1/0	SAME AS STANDARD BUTT CONNECTOR TOOL.	40
B 100-72L		22.1	16.4		96.3~117.2	4/0		20
B 150-72L		26.4	19.5		117.2~152.05	250-300MCM		15
B 200-72L		32.4	24.0		192.6~242.27	400MCM		10

X-ON Electronics

Largest Supplier of Electrical and Electronic Components

Click to view similar products for [Terminals](#) category:

Click to view products by [Nichifu](#) manufacturer:

Other Similar products are found below :

[HT-13-10](#) [71M-250-32-NB](#) [01-2065-1-0216](#) [00581P0075](#) [M10-10RX](#) [M10BCK](#) [60205-1](#) [604200-1](#) [60598-1-CUT-TAPE](#) [60617-1-C](#) [60873-1](#) [M14-516R/SK](#) [M14-6RSX](#) [M18-10FLX](#) [M18-8FBX](#) [M18-8R/LX](#) [M18BCK](#) [61314-6-C](#) [61-S](#) [61-SN-A](#) [62149-1](#) [62-NBM-A](#) [63-S](#) [640179-1](#) [640917-2-CUT-TAPE](#) [6501550002](#) [66107-2-C](#) [696683-1](#) [696834-1](#) [696861-1](#) [696931-1](#) [696999-1](#) [M8-516RK](#) [M86700006](#) [MA250DMFMX-A](#) [701-2007](#) [701-2307](#) [701-7761-03](#) [70F-110-32-PB](#) [718-N-A](#) [71M-187-20-NBL](#) [71M-250-32-NBL](#) [72F-187-20-NBL](#) [72M-250-32-NBL](#) [7310](#) [73F-250-32](#) [73F-250-32-NBL](#) [73F-250-32-NL](#) [F14-10C](#) [F-1M](#)