

# Polymer ball transfer unit | Product range

Made from xirodur® B180, for axial loads



Polymer ball transfer unit



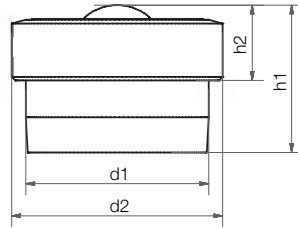
Polymer ball transfer unit



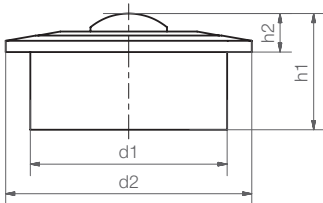
Axial polymer ball transfer unit for high loads (HH)



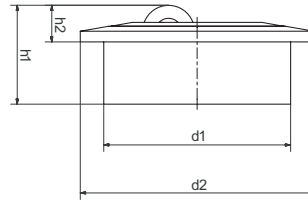
Axial polymer ball transfer unit with soft roller made from xirodur® D180 (HS)



BB-505-B180-POM



BB-522-B180-POM  
BB-515-B180-POM



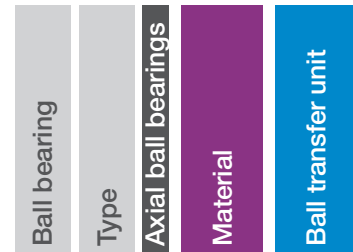
BB-515A-B180-HH/-HS  
BB-522A-B180-HH/-HS



Order key

Type xirodur® Options

BB-522A-B180-HS



Options:

**Polymer ball transfer unit:**

**POM ball**

POM = POM

**Axial polymer ball transfer unit:**

B180 = HH (hard roller) or

D180 = HS (soft roller)

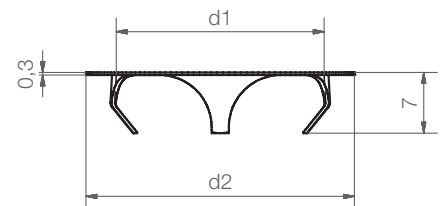
## Technical data and dimensions [mm]

Size	Max. stat. bearing load axial [N]	Inner Ø		Height		Weight [g]	Part No.
		d1	d2	h1	h2		
505	35	10.4	12.0	8.4	4.3	0.9	BB-505-B180-POM
515	80	24.0	31.0	21.0	9.8	8.7	BB-515-B180-POM
515A	150	24.0	31.0	14.3	5.3	15.6	BB-515A-B180-□
522	110	36.0	45.0	30.0	9.8	28.8	BB-522-B180-POM
522A	300	36.0	45.0	21.25	7.05	21.7	BB-522A-B180-□

## Clamp rings for xiros®-polymer ball transfer units



xiros® clamp rings made from stainless steel offer the possibility to install xiros® ball transfer units in another orientation than the standard horizontal position. Easy assembly and disassembly.



## Dimensions [mm]

Part No.	For ball transfer unit	d1	d2	Housing bore
BB-515-CR	BB-515-B180-POM/BB-515A-B180-□	24	31	25.0 -0.2
BB-522-CR	BB-522-B180-POM/BB-522A-B180-□	36	41	37.3 -0.3

## X-ON Electronics

Largest Supplier of Electrical and Electronic Components

*Click to view similar products for [Electrical Enclosure Accessories](#) category:*

*Click to view products by [Igus](#) manufacturer:*

Other Similar products are found below :

[60121-06-028 C-325 Black](#) [71884-04-028 CM3-100 Black](#) [71884-18-028 LH43-200 Black](#) [71884-24-028 LH75-200 Black](#) [71885-01-028 CM6-150 Black](#) [72459-02-028 DM-3 BLACK](#) [81501-01-000 XPL, 9VB Black](#) [82402-01 PT-8 ALUM](#) [1335GSKT3](#) [14101FP-PK](#) [CB-1263-BT](#) [1611512-4](#) [HB-11498](#) [RC-7775](#) [HM BLACK PANEL](#) [61033-01-000](#) [115123-01-508 CN-RL RS](#) [115124-01-508 CN-XRL XRS](#) [115119-01-000 CN-RL RS](#) [115123-01-000 CN-RL RS](#) [60121-04-028 C-275 Black](#) [60128-01-072](#) [60222-01-028 CM6-225 Black](#) [60272-01-028 CM3-150 Black](#) [60851-01-028 CM69-120 Black](#) [62291-502-000-KEU-10-BLK](#) [62452-01-000 HML-9VB, EB Black](#) [71884-25-028 LH89-130 Black](#) [AXX2POSTBRCKT](#) [FUPMESK](#) [71884-23-028 LH75-130 Black](#) [1317GSKTSC](#) [8G813V40389](#) [DVA.1-10-15-M4-10-70](#) [DVC.1-60-49-60-M10-28-55](#) [DVC.1-15-8,5-15-M4-10-40](#) [DVC.1-20-12-30-M6-18-40](#) [DVC.1-30-18-25-M8-20-40](#) [DVC.1-35-31-15-M8-20-40](#) [DVC.1-35-31-15-M8-20-70](#) [DVC.1-75-60-40-M12-37-70](#) [DVC.2-30-22-20-M8-20-55](#) [DVC.2-40-30-25-M8-23-55](#) [DVC.2-75-60-40-M12-37-55](#) [DVC.2-21-16-22-M6-18-40](#) [DVC.2-40-20-48-M8-23-40](#) [DVC.2-40-32-50-M8-23-40](#) [DVC.2-20-14-19-M6-18-70](#) [DVC.2-25-18-20-M6-18-70](#) [DVC.3-20-14-20-M6-40](#) [DVC.3-20-14-30-M6-40](#)