

THIS DOCUMENT IS SUBJECT TO CHANGE WITHOUT NOTICE. IT IS CONFIDENTIAL AND A PROPERTY OF LTW. DISCLOSURE TO THIRD PARTY HAS TO BE AUTHORIZED BY LTW.

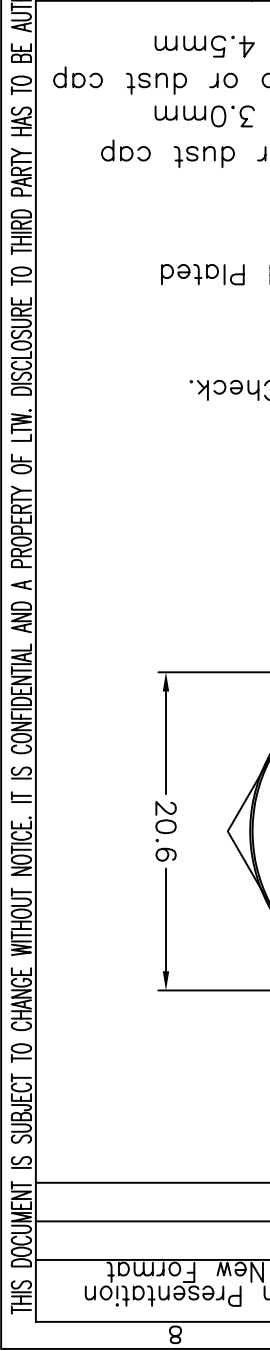
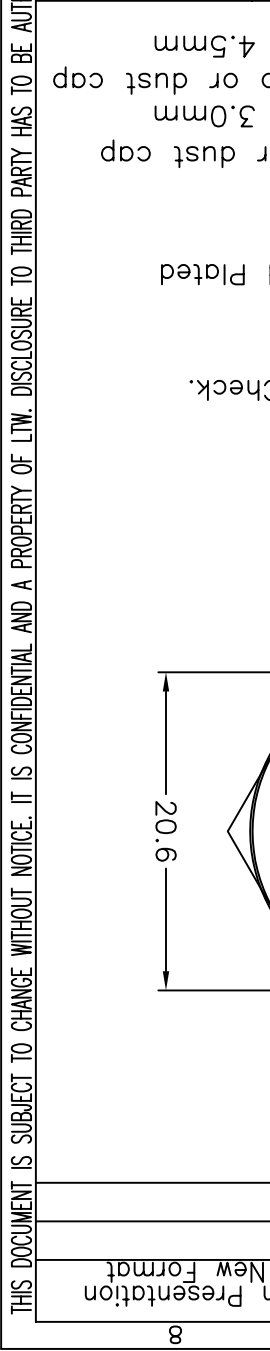
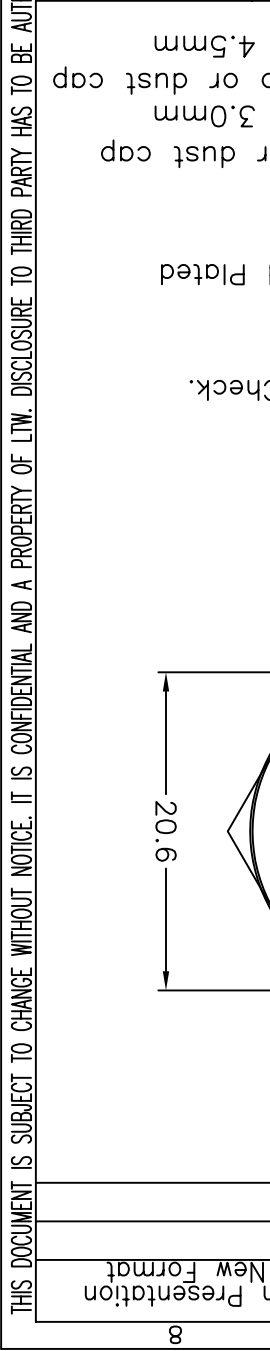
8 qp02c-01-01a2

REV.	ECN NO.	DATE	SIGN	DESCRIPTION
B		2007/04/19	J.Espiritu	Change Pin Presentation And Apply New Format
C	LEN-8B0410	2008/09/22	Shin	Add Note

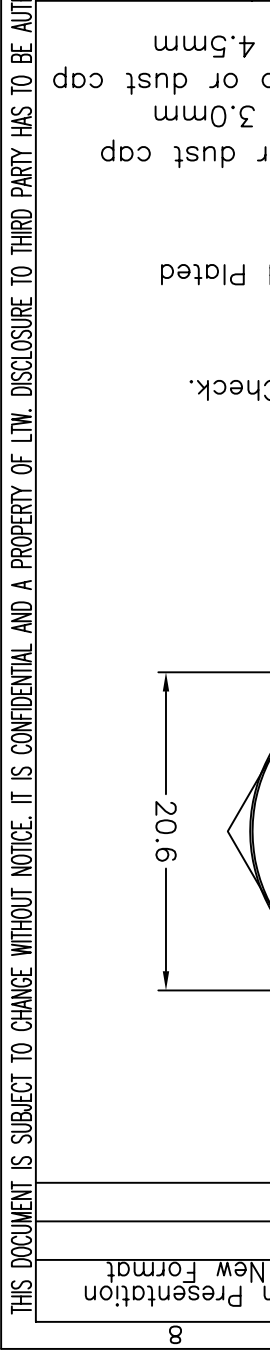
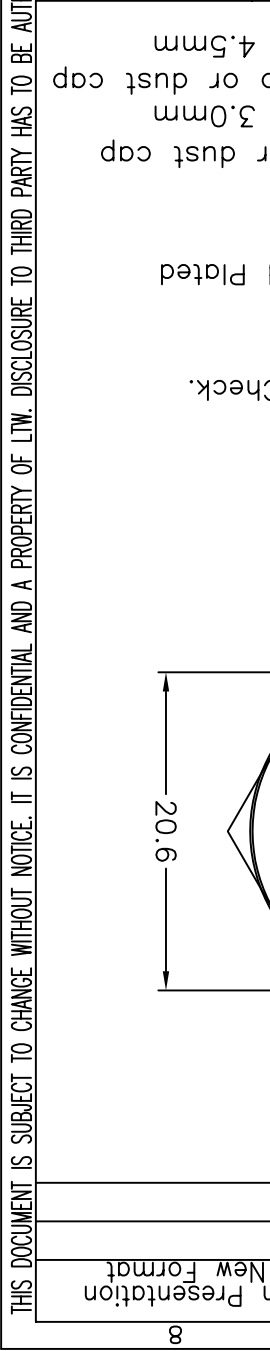
DATE	DRAWN BY	ITEM NO	CUSTOMER	APPROVED BY
2008/10/30	Ivan	LTWBU-10PMS-LC701	亮泰企業股份有限公司	Luke
DATE	CHECKED BY	DWG NO		
2008/10/30	Tommy	LTWBU-10PMS-LC701		
DATE				
2008/10/30				

1	2	3	4	5	6	7	8
---	---	---	---	---	---	---	---

UNIT:mm	TOLERANCE	X XX XXX	±1 ±0.05 ±0.1 ±0.25
Panel Lock 10Pin M Conn. M Pin	SCALE	Free	REV. C
Standard	SHEET	1 OF 1	SIZE A4
LTW	①: Inspection Item		



- Note: ① Important Dimension To Check.
- * Waterproof Rate: IP67
 - * Housing: Black, Nylon+GF
 - * Male Pin: Copper Alloy, Gold Plated
 - * Nut: Black, Nylon+GF
 - * Gasket: Black, EPDM
 - * Use with waterproof cap or dust cap
 - * Use without waterproof cap or dust cap
 - * Panel Thickness Max: 3.0mm
 - * Panel Thickness Max: 4.5mm



X-ON Electronics

Largest Supplier of Electrical and Electronic Components

Click to view similar products for [Unspecified Connectors](#) category:

Click to view products by [Amphenol](#) manufacturer:

Other Similar products are found below :

[1-21107-1](#) [RAD-OUT-8D-REL](#) [RF-17S1N8A80DU](#) [2-21053-5](#) [PSC-28-1](#) [38111](#) [403000A10M050](#) [1-1589688-1](#) [QUINT-PS/1AC/48DC/10](#)
[99 9113 02 05](#) [578302](#) [578286](#) [130623](#) [186316](#) [153253](#) [186328](#) [153276](#) [153341](#) [153322](#) [153354](#) [193951](#) [130642](#) [1713941](#) [HC-DD72-I-](#)
[CT-F](#) [VC-AR1/2M-S88-SET](#) [RC-5AS2000](#) [RC-Z2068](#) [VC-TR5/6M](#) [RAD-900-CONF-RF1](#) [RAD-CON-SMA-N-SS](#) [RAD-ISM-900-ANT-](#)
[OMNI-0-6](#) [RAD-PIG-EF316-N-RSMA](#) [KST-POF](#) [RIF-0-RPT-12DC/21](#) [RIF-1-BPT/2X21](#) [RIF-1-RPT-LV-120AC/2X21AU](#) [RIF-RH-1](#) [PV-](#)
[FT-C2F-HSG](#) [HC-EVO-B06-HHFS-2B-PL-BK](#) [99 0210 00 04](#) [801377](#) [803579](#) [710-00007](#) [122.005-6](#) [122.012-10](#) [122.018-10](#) [122.038-6](#)
[125.038-8](#) [135.016](#) [136.0804](#)