

SRL MAINS LOCK SWITCHES

GENERAL ELECTRICAL & MECHANICAL SPECIFICATION

Switch Rating:	4A @ 250V AC 80A surge
Life:	>10,000 Cycles
Operating Temperature:	-25°C to +85 °C
Proof Voltage:	3kV min. (Initial)
Insulation Resistance:	>999 Megohms at 500V DC (Initial)
Contact Resistance:	<20 Milliohms (Initial)
Flame Retardency:	UL94 V0
Switch contacts:	Silver Cadmium Oxide
Switch Chamber:	Polyester G.F. (PBT) V0 Rated
Tag Panel:	SRBP
Terminals:	Brass CZ108 Ag Plated
Lock Housing:	Zinc Alloy Bright Chrome Plated
Keys:	Mild Steel Ni Plated



GENERAL FEATURES

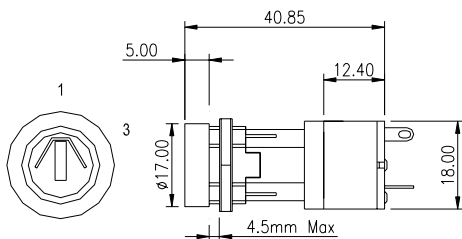
- Made in UK.
- Miniature key –operated Lock switch
- Up to 200 key combinations - keys to differ
- Common keys available – keys to pass
- 4A/80A Surge @ 250V ac mains switch module has DEMKO approval. (Only module is approved).
- Two part construction. The lock is inserted into the panel from the front. The mains switch module snaps-on, from the rear of the panel.
- Standard solder terminals (Printed circuit terminals optional – add /P to part number).
- Two keys per lock. Additional keys to order.
- RoHS Compliant
- Snap on switch module

CIRCUITRY	TERMINAL LAYOUT VIEWED FROM REAR OF SWITCH	KEY WITHDRAWAL POSITIONS
2 POLE OFF-ON		
2 POLE ON-OFF (NORMALLY CLOSED)		

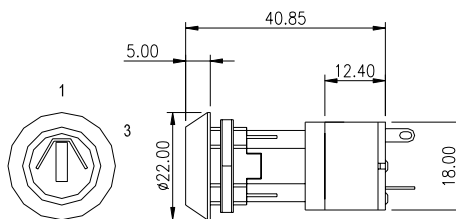
SRLM ORDER CODES				
SWITCH	KEY	POSITION IN WHICH KEY FREE	Tapered lock Head Order-codes	Parallel lock Head Order-codes
2 POLE OFF – ON	DIFFERS DIFFERS	0° and 90° (1+4) 0° only (1)	SRLM -5-Q-D SRLM -5-S-D	SRLM -5-U-D SRLM -5-W-D
2 POLE OFF – ON	SAME SAME	0° and 90° (1+4) 0° only (1)	SRLM -5-Q-S SRLM -5-S-S	SRLM -5-U-S SRLM -5-W-S
2 POLE ON-OFF	DIFFERS DIFFERS	0° and 90° (1+4) 0° only (1)	SRLM -5-R-D SRLM -5-T-D	SRLM -5-V-D SRLM -5-X-D
2 POLE ON-OFF	SAME SAME	0° and 90° (1+4) 0° only (1)	SRLM -5-R-S SRLM -5-T-S	SRLM -5-V-S SRLM -5-X-S

LOCK TYPE: 5 Disc.
LOCK MOVEMENT: 90° Steps.
LOCK COMBINATIONS: 200 differs or all to pass (same key for all locks).
KEY TYPE: Flat, double entry (key can be inserted into the lock either way up).
MASTER KEY SYSTEM AVAILABLE: No
MAXIMUM PANEL THICKNESS: 3.4mm.

SRL LOCKSWITCH WITH SNAP-ON MS MODULE

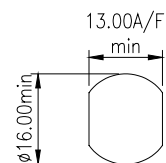


PARALLEL LOCK HEAD



TAPERED LOCK HEAD

PANEL PIERCING DETAILS



X-ON Electronics

Largest Supplier of Electrical and Electronic Components

Click to view similar products for [lorlin](#) manufacturer:

Other Similar products are found below :

[WRL-5-E-S-2](#) [CK1036](#) [SRL-5-D-D-2](#) [SDS37Z](#) [SRL020](#) [SKL-12-A-S-2](#) [IRL-5-K-S-2](#) [SDS9Z](#) [MTS-11-80](#) [CK1453](#) [CK1460](#) [CK1025](#)
[CK1032](#) [IRL-5-M-S-2](#) [CKS1027](#) [WRLM-5-T-S](#) [BCKS1004](#) [SDP50Z](#) [GCK1022](#) [CK1043](#) [CKS1052](#) [CK1061](#) [CK1589](#) [CK2404](#) [WRLM-5-](#)
[Q-S](#) [CK1592](#) [BCK1006](#) [CK1055](#) [SDP37Z](#) [BCK1019](#) [GCK1023](#) [CK1457](#) [CK1451](#) [GCK1026](#) [406817F](#) [CK1456](#) [CK1042](#) [BCK1020](#)
[CK1062](#) [CKAEAA1500](#) [CK1461](#) [SRL-5-E-S-2](#) [CK2379](#) [CKF1059](#) [CK1455](#) [CK1035](#) [CK2378](#) [MDSP220KN-ESAI-2-19PY](#) [CK1450](#)
[SDP25Z](#)