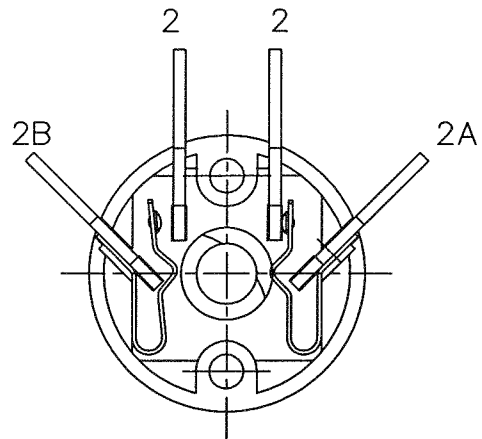
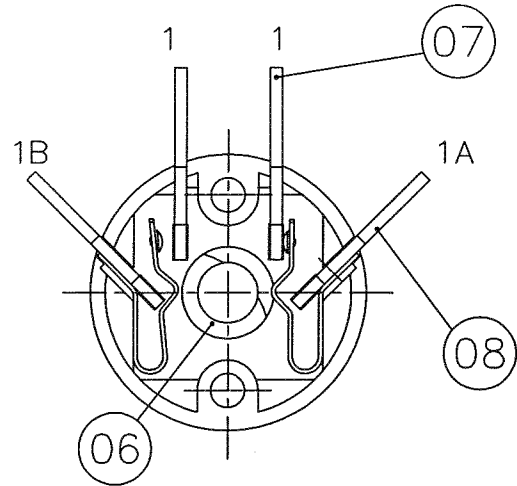


Drq No :- F 60771

SPECIFICATION

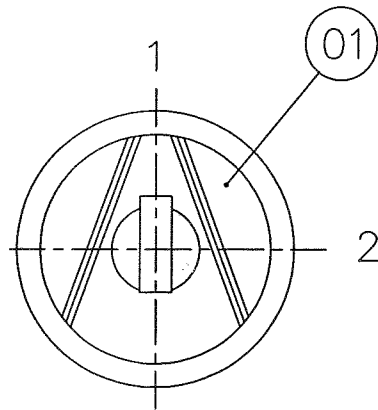


CONTACT DETAIL VIEW ON ARROW "B"

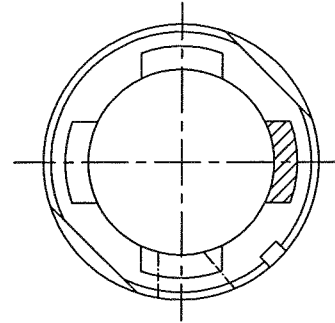
DIAGRAM OF CONNECTIONS

CON POS	1-1A	1-1B	2-2A	2-2B
1	X	X		
2		X	X	

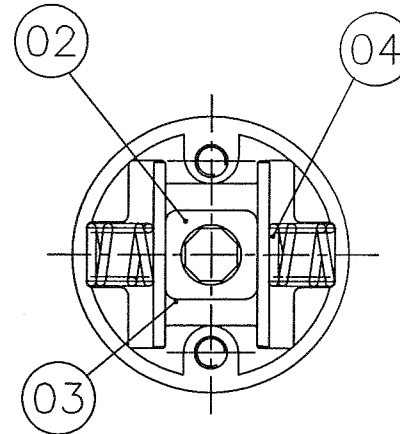
FINAL ASSEMBLY



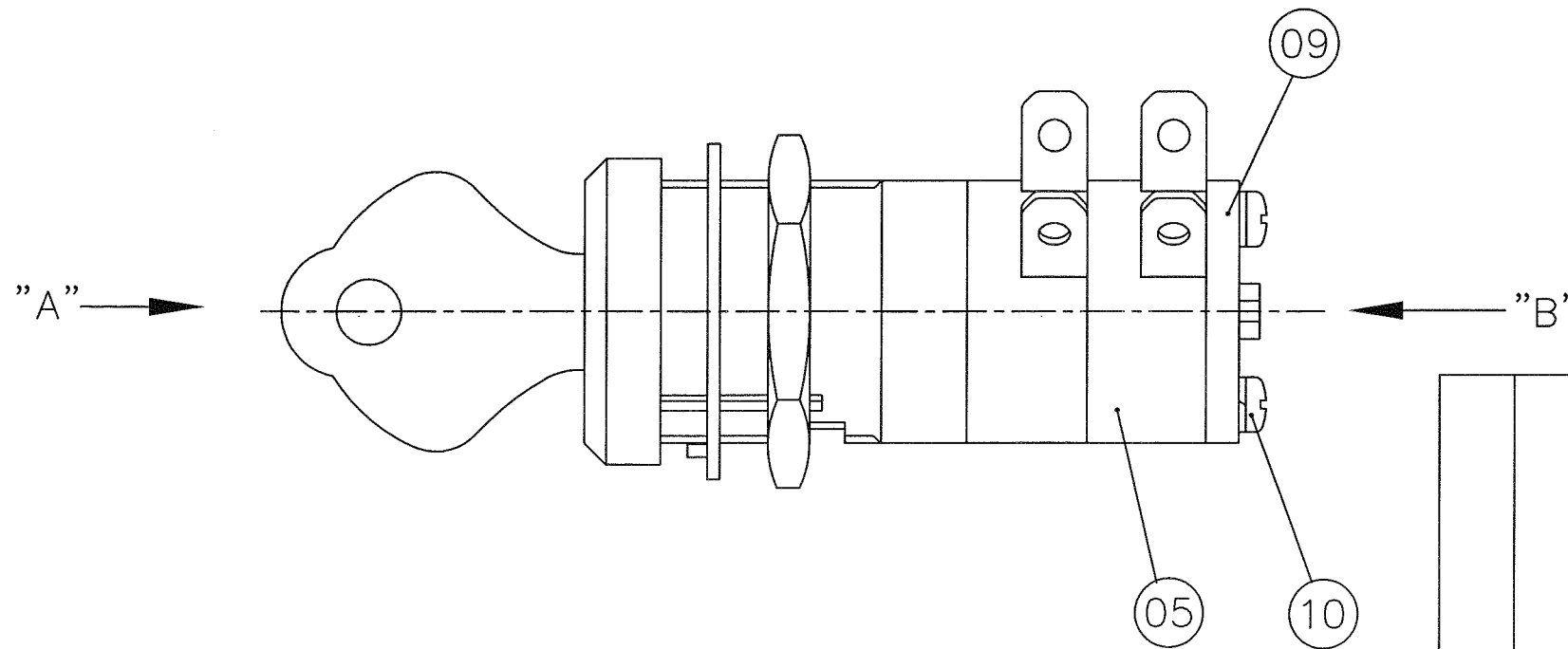
KEY POSITION VIEW ON ARROW "A"



KEY TRAP DETAIL VIEW ON ARROW "A"



INDEX DETAIL VIEW ON ARROW "B"



No OFF	ITEM No	DRG No	DESCRIPTION
1	01	MS 65345	LOCK ASSEMBLY
1	02	MS 68178	INDEX CAM
2	03	MS 68182	INDEX SHOE
2	04	MS 68184	INDEX SPRING
2	05	MS 68197	PACKET
2	06	MS 68200	CAM
4	07	MS 68207	INLAID TERMINAL
4	08	MS 68209	CONTACT ARM SA
1	09	MS 68219	BACK PLATE
2	10	MS 68438	SEMS SCREW

1	FIRST ISSUE	10/09/02
ISSUE	REVISION	DATE

saia-burgess

Smart solutions for comfort and safety
 Saia-Burgess Gateshead Limited
 Dukeway, Team Valley Trading Estate
 Gateshead, Tyne & Wear NE11 0UB
 Tel: +44 (0) 191 401 6100
 Fax: +44 (0) 191 401 6322
 www.saia-burgess.co.uk



THIRD ANGLE PROJECTION
 DO NOT SCALE!
 THIS DRAWING MUST ONLY BE AMENDED ON A CAD SYSTEM
 ALL DIMENSIONS SPECIFIED IN MILLIMETRES

TOLERANCES UNLESS STATED:-

NO DECIMAL PLACE ±0.50
 1 DECIMAL PLACES ±0.25
 2 DECIMAL PLACES ±0.15
 ANGULAR ±1°

APPROVED

DRAWN	T.BELL.	CHECKED BY	<i>[Signature]</i>
DATE	10/09/02	ENGINEERING	<i>[Signature]</i>
SCALE	2/1	QUALITY ASSURANCE	<i>[Signature]</i>

TITLE / DESCRIPTION
P2/3F-CC-209

Drq No :- F 60771

A3

X-ON Electronics

Largest Supplier of Electrical and Electronic Components

Click to view similar products for [saia-burgess](#) manufacturer:

Other Similar products are found below :

[BVM3FYR-ULS](#) [XGG6-88](#) [KOP512KK7MWVPN00A](#) [BVM3FYULS](#) [B14HD-253-B-4](#) [B14HD-L-254-B-4](#) [B22M-255-M-36](#) [C5-267-B-1](#)
[KOL251H7MKVPN00](#) [404019/464407](#) [XGG2-88-J22Z1](#) [KOP260F0MWVAN00](#) [KOL321H7MRVPN00](#) [414119/464407](#) [V9NLR1V-3.0M](#)
[F4T7YCGPUL](#) [XCF5Z1](#) [XCG12-L1](#) [XGG2-88-S20Z1](#) [J84211213](#) [195225-230](#) [V3SYR1UL](#) [V9N](#) [P2/3FCC 209](#) [KOP170J7MWVPN00](#)
[V4NCT7-A1](#) [F5T8GPUL](#) [UDS1UR6M50CANCZ183](#) [B14HD-254-B-4](#) [XCG10-J1Z1](#) [XCG5-J1Z1](#) [QA4/3260](#) [V4LSK2](#) [XGG2-88-J23Z1](#)
[V4NC4SET9-NI1](#) [XCG11-J1Z1](#) [4BRSH](#) [B14HDP-253-B-4](#) [XCG13-L1](#) [B4HDM-253-M-36](#) [XCF8Z1](#) [KOL312H7MRVPN00](#) [V4NT8](#)
[XGC2-88-J23](#) [XGC2-88-S20Z1](#) [195224-230](#) [282367-027](#) [V4NCT7-Y1](#) [195223-234](#) [195224-233](#)