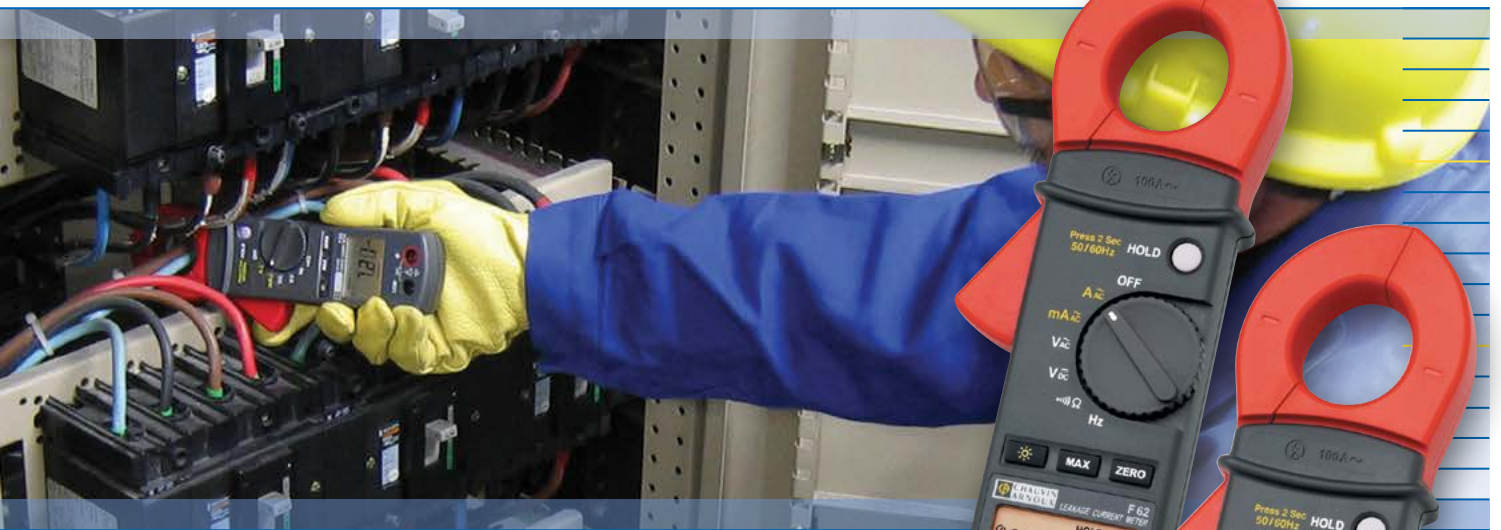


F62 - F65

Leakage multimeter clamps



**For rapid testing of leakage currents
and isolation faults on live installations!**

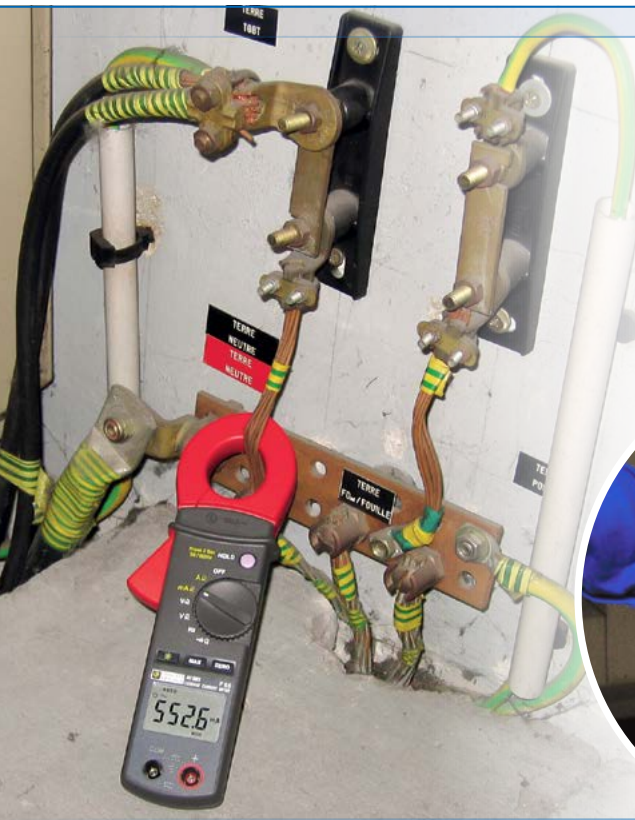
- Analysis of RCD trigger currents
- Earth leakage currents
- Unbalanced phase currents
- High immunity to currents of adjacent conductors
- Anti-harmonic filter selection for enhanced fault detection on disturbed systems
- 3-year warranty
- Compliance with standard VDE 0404



Measure up

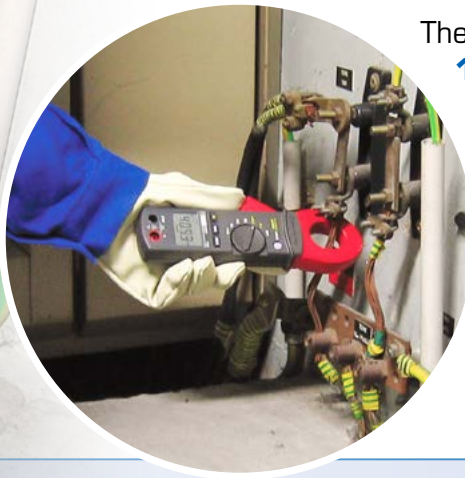


and detection of isolation faults on live installations!



ALL-PURPOSE MULTIMETER CLAMPS

F62 and **F65** pocket-sized clamps provide the full range of functions proposed by conventional clamp-on multimeters: current up to 100 A, AC/DC voltage, frequency, resistance and audible continuity.



They are equipped with a **backlit 10,000-count LCD screen**, with display memory and **maximum value and differential measurement functions** (Delta). To optimise the battery life, they come equipped with an **automatic power-off function**, in the event of prolonged periods without use.

High immunity offered by 28 mm maximum insertion jaws

Rotating selector switch for selection of desired measurement: current, voltage, frequency, audible continuity or resistance

"Zero" relative value function to facilitate comparative measurements

Activation of harmonic filter (Hold key)

Backlit 10,000-count LCD screen

Other Chauvin Arnoux products for use in association with F62/F65 clamps

Clamp jaws open to 115 mm!

The **B102 clamp**, associated with a multimeter, is the ideal accessory for use with F62/F65 clamps for the testing of installation feeders on large-diameter conductors.



Complete verification of the safety of your electrical installations

In domestic, tertiary or industrial environments (TT, TN or IT systems), the **C.A 6116N electrical installation tester** offers a wide range of measurements for checking and certifying electrical installations' safety and compliance with the standards.



F62 - F65 SPECIFICATIONS

				F62		F65		
RMS measurement						●		
Function	Calibre	Resolution	Accuracy				Protection against overloads	
			<i>with filtre 50-60 Hz</i>		<i>with filtre 50-60 Hz</i>			
AC current	mA AC	60 mA	10 µA	1.2 % ± 5 cts	2.5 % ± 5 cts	1.2 % ± 5 cts	2.5 % ± 5 cts (50-500 Hz) 3.5 % ± 10 cts (500 Hz-3 kHz)	150 Arms
		600 mA	100 µA					
	A AC	10 A	1 mA	1.2 % ± 5 cts	2.5 % ± 5 cts	1.2 % ± 5 cts	2.5 % ± 5 cts (50-500 Hz) 3.5 % ± 10 cts (500 Hz-3 kHz)	
		80 A	10 mA					
	100 A			5 % ± 5 cts	5 % ± 5 cts (50-60 Hz)	5 % ± 5 cts	5 % ± 5 cts (50-60 Hz)	
Voltage	V AC	600 V	0.1 V	1 % ± 5 cts (50-60 Hz) 1.2 % ± 5 cts (50-500 Hz)		1 % ± 5 cts (50-60 Hz) 1.2 % ± 5 cts (50-500 Hz) 2.5 % ± 5 cts (500 Hz-3 kHz)		660 Vrms
	V DC	600 V	0.1 V	1 % ± 2 cts				
Resistance	Ω	1 kΩ	0.1 Ω	1 % ± 3 cts (Vmax measurement 3.3 V DC)				600 Vrms
Audible continuity	Buzzer < 35 Ω							
Frequency	A Hz	100 Hz 1 kHz	0.1 Hz 1 Hz	0.5 % ± 2 cts (I > 10 mA)				
	V Hz	100 Hz 1 kHz	0.1 Hz 1 Hz	0.5 % ± 2 cts (V > 5 V)				
Display				10,000 counts - 2 measurements / s				
Backlit LCD				●		●		
MAX. value				100 ms				
Relative measurement (Δ0)				●		●		
Automatic switch-off/ HOLD function				●		●		
Large clamping diameter				28 mm				
Dimensions				218 x 64 x 30 mm				
Weight				280 g (with batteries)				
Standards				IEC 61010-1 / IEC 61010-2-032 / IEC 61010-2-033				
Installation category				CAT III 300 V				
Protection rating of casing				IP 30 as per NF EN 60529				

● To order

Leakage multimeter clamps

F62..... PO1120760

F65..... PO1120761

Delivered with a set of elbowed male banana/straight male banana leads, 1 set of test probes, 2 x 1.5 V AAA/LR3 batteries, 1 bag and 1 operating manual in 5 languages.



Accessories and replacement parts

Multiple accessories and measurement leads available.

Please see the guide

www.chauvin-arnoux.com



FRANCE
Chauvin Arnoux
 190, rue Championnet
 75876 PARIS Cedex 18
 Tel: +33 1 44 85 44 38
 Fax: +33 1 46 27 95 59
 export@chauvin-arnoux.fr
 www.chauvin-arnoux.fr

UNITED KINGDOM
Chauvin Arnoux Ltd
 Unit 1 Nelson Ct, Flagship Sq, Shaw Cross Business Pk
 Dewsbury, West Yorkshire - WF12 7TH
 Tel: +44 1924 460 494
 Fax: +44 1924 455 328
 export@chauvin-arnoux.fr
 www.chauvin-arnoux.fr

MIDDLE EAST
Chauvin Arnoux Middle East
 P.O. BOX 60-154
 1241 2020 JAL EL DIB - LEBANON
 Tel: +961 1 890 425
 Fax: +961 1 890 424
 camie@chauvin-arnoux.com
 www.chauvin-arnoux.com

X-ON Electronics

Largest Supplier of Electrical and Electronic Components

Click to view similar products for [Clamp Multimeters & Accessories](#) category:

Click to view products by [Chauvin Arnoux](#) manufacturer:

Other Similar products are found below :

[I800](#) [FLUKE 1630-2](#) [ZAPDUMOD-03](#) [ZARKMS-01-99](#) [UT233](#) [TESTO 770-3](#) [0590 7703](#) [AX-3550](#) [AX-M266C](#) [BM079](#) [BM089](#) [BM157](#)
[BM162](#) [BM197](#) [KEW2210R](#) [FLUKE 80I-110S](#) [FLUKE I200](#) [FLUKE I200S](#) [FLUKE I3000FLEX-24](#) [FLUKE I310S](#) [FLUKE I400](#) [CIE600](#)
[TESTO 770-2](#) [0590 7702](#) [34194A](#) [KEW2433R](#) [KEW8112](#) [FLUKE 772](#) [380976-K](#) [MA3110](#) [MA440](#) [MA443](#) [MA445](#) [FLUKE-374 FC](#)
[TA74](#) [AMP-320](#) [CM55](#) [CM46](#) [I200](#) [ACD-6 PRO](#) [FLUKE-1630-2FC](#) [I410](#) [CM44](#) [CM42](#) [FLK-A3000 FC](#) [FLUKE-376 FC](#) [ACD-14-PRO](#)
[MA610](#) [F201](#) [F205](#) [MA193 \(250 MM\)](#) [DIGIFLEX 4000A 350MM](#)