

Connectors

New Product Guide

Over 700 new Product Lines

Connectors - Multipole

- Mini CPC – Ideal for applications where size, contact density and environmental exposure are primary concerns
- For more details see page 11



tyco | harsco | AMP

Connectors – Power & Mains

- Comprehensive range of IEC inlet Filters, including compact, fused and switched variants
- For more details see pages 18-19



Belling Lee

Connectors – RF Coaxial

- Multicomp MMCX , MCX – Offering 30% reduction in size over SMB/SMC
- For more details see pages 23-24



multicomp

Connectors – Signal

- IEEE1394 – A range of connectors and cable assemblies for speeds up to 400Mbps
- For more details see pages 27-28



molex



Welcome to **Farnell InOne**

Farnell InOne is a world-leading marketer and distributor of electronic and MRO (maintenance, repair and operations) products. We offer our customers a multi-channel choice for over 220,000 stocked products, providing a comprehensive range of value-added services and tailored solutions to support your business needs.

Ordering from Farnell InOne is easy

1. Select from over 220,000 products from our catalogue, brochures, website or CD
2. Choose how you'd like to order:

Tel: **08701 200 200**
 Fax: **08701 200 201**
 web: **www.farnellinone.co.uk**
 eMail: **sales@farnellinone.co.uk**
 Post: **Farnell InOne, Canal Road,
 Leeds LS12 2TU**

3. Choose how you'd like to pay:
 Farnell InOne account
 Credit card*
 Corporate purchasing card

*there is a £10 minimum order value for credit card purchases

Orders placed before 8.00pm will be delivered next working day free of charge. For more urgent deliveries please call Farnell InOne Sales for details. Terms and Conditions apply.

Hassle free account opening...

If you wish to open an account, simply send us your official company letterhead.

Fax it on 08701 227 709 or post to:
 New Account Development,
 Farnell InOne, Canal Road, Leeds LS12 2TU.

...your account can be opened today!

The Farnell InOne Guarantee*

Buy with confidence. If you are not completely satisfied with the products you buy from Farnell InOne, just return within 30 days for a full refund.

Return (in original packaging) to:
 The Returns Department, Farnell InOne International
 Distribution Centre, Castleton Road, Leeds LS12 2EN.

*Excludes software and specially constructed items.

Feedback

Your feedback ensures we continue to improve our service to you.
 eMail us at:

marketingfeedback@farnellinone.co.uk, or
productfeedback@farnellinone.co.uk
 (for existing product feedback or new product suggestions)

Your award winning distributor

Farnell InOne has been voted Distributor of the Year 2003 by three separate awarding bodies!

European Electronics Award – European Electronics Distributor of the Year 2003

This prestigious award was granted by key trade publication, Electronics Weekly.

Tyco Electronics Award – Distributor of the Year – UK and Ireland

Granted for the second time to Farnell InOne by leading edge technology products company, Tyco Electronics.

EPCOS UK Award – Distributor of the Year 2003

Awarded by leading passive component supplier, EPCOS UK.

A big thank you to our customers, suppliers and industry experts who have voted to make us Distributor of the Year!

Product Watch - Your obsolescence notification service

- Advanced warning of obsolete, end of line and end of stock items.
- Notification of back order or scheduled order cancellation.
- We'll inform you when the components you buy are no longer going to be available.
- We'll even recommend a replacement or an upgrade.
- Available FREE to all Farnell InOne account customers.



Tel: 08701 200 200 Fax: 08701 200 201
 eMail: productwatch@farnellinone.co.uk

Register now

For the convenience of receiving this service by eMail forward your name, Customer ID and account number to : productwatch@farnellinone.co.uk.

* This service is not available for consumable items e.g. batteries or goods easily substituted such as hand tools.

ProductFind – the sourcing solution with over 6 million products

When a choice of over 220,000 stocked products just isn't enough, you need ProductFind:

- A team of experts dedicated to sourcing non-catalogue products.
- Designed to reduce your sourcing time and costs
- Fast quotes on those hard-to-find items from hundreds of manufacturers, existing or new
- Contact us with the product and manufacturer you're looking for and we'll call you back with a quotation, availability and delivery dates

Tel: 08701 200 200 Fax: 08701 200 201
 eMail: ProductFind@farnellinone.co.uk



All products detailed in this publication are subject to availability. Whilst every effort has been made to ensure the accuracy of the products and information detailed in this publication, Farnell InOne does not warrant the accuracy of the information and accepts no liability for technical inaccuracies or typographical errors. All products purchased from this publication are subject to the Farnell InOne conditions of sale as set out in the current edition of the Farnell InOne Catalogue. A copy of the conditions of sale can be obtained from the Farnell InOne Sales office by telephoning 08701 200 200.

Free next day delivery is available on all items if ordered before 8pm (orders placed on a Saturday will be delivered on the next working day) subject to availability. Terms and conditions apply. For more urgent deliveries please call the Farnell InOne Sales office for details. Prices exclude VAT and are valid until 30th April 2004.

Contents

All the latest products...

Welcome to issue 2 of our Connectors New Product Guide, focussing on providing you with the best connector ranges from Farnell InOne.

Highlights from this issue include

- **Over 1200 products including over 700 new lines** from 19 suppliers, including
- **Tyco** – Miniature CPC (circular plastic) connectors **exclusive to Farnell InOne**. Ideal for industrial, instrumentation and transportation where size and environmental exposure is of primary concern. **See page 11**
- **Molex** – IEEE1394 industrial connectors offer a new standard of video and audio I/O and USB On-The-Go, enabling mobile devices to exchange data directly without the need from a host PC. **See page 28**
- **Multicomp** – RF connectors. Major price reductions enable you to reduce the cost of your application without compromising on quality. **See pages 21-24**

Crimp Terminals	4-6
Multipole.....	6-12
PCB	13-18
Power and Mains	18-21
RF Coaxial.....	21-24
Signal & Data	24-34

...from industry leading manufacturers



Shell	No.	Contact	Price Each			
Panel Mount Receptacle - Pin Contacts - Crimp						
22	55	20	390-440412	35.51	31.05	28.71
20	41	20	390-442812	39.56	34.61	22.62
14	19	20	390-444112	20.65	18.05	16.71
12	3	16	390-446512	14.66	12.82	11.85
12	10	20	390-448912	17.57	15.36	14.21
10	6	20	390-450712	16.61	14.52	13.43
Straight Plug - Socket Contacts - Solder						
8	4	20	390-451912	23.60	20.63	19.09
8	3	20	390-453212	23.09	20.19	18.67
22	55	20	390-455612	48.92	45.77	44.51
20	41	20	390-457012	78.89	69.04	45.12
14	19	20	390-459312	28.31	24.75	22.90
12	3	16	390-461112	21.91	20.15	19.45
12	10	20	390-463512	22.82	21.50	19.69
10	6	20	390-465912	35.86	31.37	20.51
Straight Plug - Pin Contacts - Solder						
8	4	20	390-452012	40.90	35.79	23.39
8	3	20	390-454412	39.94	34.95	22.84
22	55	20	390-456812	45.93	40.15	37.15
20	41	20	390-458112	79.62	69.66	45.53
14	19	20	390-460012	26.78	23.42	21.65
12	3	16	390-462312	18.66	17.95	17.66
12	10	20	390-464712	23.11	20.20	18.69
10	6	20	390-466012	34.70	30.36	19.84
Panel Mount Receptacle - Socket Contacts - Solder						
8	4	20	390-467212	13.85	12.11	11.20
8	3	20	390-469612	11.11	9.71	8.99
22	55	20	390-471412	68.58	60.00	39.22
20	41	20	390-473812	55.57	48.62	31.78
14	19	20	390-475112	18.99	16.60	15.36
12	3	16	390-477512	23.51	20.57	13.45
12	10	20	390-479912	14.32	12.52	11.58
10	6	20	390-481712	12.58	11.00	10.17
Panel Mount Receptacle - Pin Contacts - Solder						
8	4	20	390-468412	21.84	19.11	12.49
8	3	20	390-470212	20.90	18.28	11.95
22	55	20	390-472612	61.54	53.85	35.20
20	41	20	390-474012	52.68	46.09	30.13
14	19	20	390-476312	16.77	14.67	13.56
12	3	16	390-478712	20.17	17.65	11.54
12	10	20	390-480512	13.62	11.91	11.02
10	6	20	390-482912	12.13	10.61	9.82
Tools			Order Code	1+	50+	100+
Crimp Tool			890-37612		234.05	
Positioner			390-483012		83.81	
Insertion Tool Size 16			390-484212		23.01	
Insertion Tool Size 20			390-485412		23.01	
Extraction Tool Size 16			390-486612		30.49	
Extraction Tool Size 20			390-487812		30.49	
KPSE Complete Crimp Kit			390-490812		443.85	
Wire Hole Fillers						
				Order Code	1+	50+
Size 16			390-488012		0.12	0.105
Size 20			390-489112		0.045	0.04
Crimp Contacts						
						Price Each
				Order Code	1+	5+
Size 16 Pin			390-491012		0.48	0.44
Size 16 Socket			390-492112		0.86	0.79
Size 20 Pin			390-493312		0.34	0.31
Size 20 Socket			390-494512		0.46	0.42

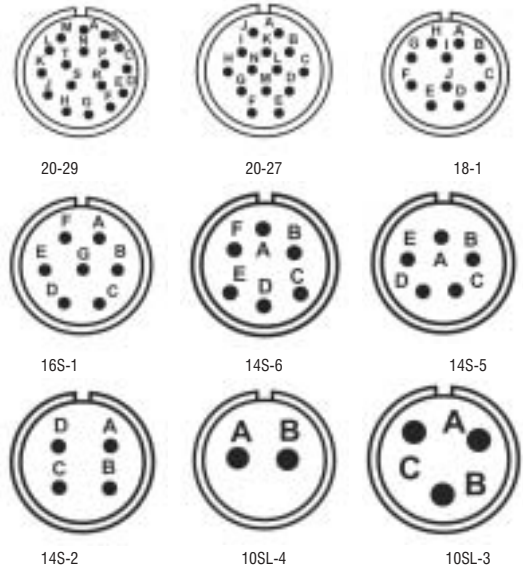
MIL-C-5015 Connectors



MIL-C-5015 connectors are designed and manufactured for extreme conditions but are ideally suited to commercial applications where a low cost rugged connector is required.

- Completely sealed to withstand moisture, condensation, vibration and flashover
- Tinned solder pot termination

Typical applications include aircraft, industrial equipment, medical equipment, transportation, communication, robotics and telecommunications



Specification	
Current Rating	13A
Insulation Resistance	≥5000MΩ
Voltage Rating AC	200V rms
Voltage Rating DC	250V
Mating Cycles	100
Operating Temperature	-55°C to 125°C
Wire Range	16 to 20 AWG

Materials	
Housing	Aluminium Alloy Olive Drab Chromate finish
Contacts (Size 16)	Brass, Gold MIL-G-45204 plated
Insulator	Neoprene

MS3106F straight plugs mate with MS3102 receptacles
MS3101F cable connecting plugs are used for cable extension requirements where mounting provisions are unnecessary and mate with MS3106F plugs

Mfrs. List No.

MS3106F20-29S=390-501912	MS3102R20-29S=390-519612	MS3101F20-29S=390-537812
MS3106F20-27S=390-503212	MS3102R20-27S=390-521412	MS3101F20-27S=390-539112
MS3106F18-1S=390-505612	MS3102R18-1S=390-523812	MS3101F16S-1S=390-543312
MS3106F16S-1S=390-507012	MS3102R16S-1S=390-525112	MS3101F16S-1S=390-543312
MS3106F14S-6S=390-509312	MS3102R14S-6S=390-527512	MS3101F14S-6S=390-545712
MS3106F14S-5S=390-511112	MS3102R14S-5S=390-529912	MS3101F14S-5S=390-547012
MS3106F14S-2S=390-513512	MS3102R14S-2S=390-531712	MS3101F14S-2S=390-549412
MS3106F10SL-4S=390-515912	MS3102R10SL-4S=390-533012	MS3101F10SL-4S=390-551212
MS3106F10SL-3S=390-517212	MS3102R10SL-3S=390-535412	MS3101F10SL-3S=390-553612
MS3106F20-29P=390-502012	MS3102R20-29P=390-520212	MS3101F20-29P=390-538012
MS3106F20-27P=390-504412	MS3102R20-27P=390-522612	MS3101F20-27P=390-540812
MS3106F18-1P=390-506812	MS3102R18-1P=390-524012	MS3101F18-1P=390-542112
MS3106F16S-1P=390-508112	MS3102R16S-1P=390-526312	MS3101F16S-1P=390-544512
MS3106F14S-6P=390-510012	MS3102R14S-6P=390-528712	MS3101F14S-6P=390-546912
MS3106F14S-5P=390-512312	MS3102R14S-5P=390-530512	MS3101F14S-5P=390-548212
MS3106F14S-2P=390-514712	MS3102R14S-2P=390-532912	MS3101F14S-2P=390-550012
MS3106F10SL-4P=390-516012	MS3102R10SL-4P=390-534212	MS3101F10SL-4P=390-552412
MS3106F10SL-3P=390-518412	MS3102R10SL-3P=390-536612	MS3101F10SL-3P=390-554812

23317

Multipole Rectangular - continued



MATE-N-LOK II

Mini Universal, Dual Row



- Locking Plug and Cap Housing Assemblies
- Dual Row
- Contacts accept wire range 30-16 AWG



Housing Polyamid, UL94V-0 Insulation Resistance 100MR
 Contact Resistance 20mΩ Durability 25 Mating Cycles
 Dielectric Withstanding Voltage 1500V AC/VDC Temperature Range -20°C To +65°C
 Current Rating Up to 10.5A Per circuit, 2 position

239847

No. Of Ways	Plug Housing Mftrs List No.	Order Code	Price Each			
			1+	100+	250+	500+
Plug Housing						
8	794192-1	361-477312	1.03	0.92	0.87	0.83
10	794196-1	361-478512	1.08	0.96	0.92	0.87
12	794198-1	361-479712	1.30	1.12	0.99	0.94
14	794202-1	361-480312	1.31	1.13	1.09	1.04
16	794206-1	361-481512	1.33	1.14	1.11	1.06
18	794208-1	361-482712	1.37	1.22	1.16	1.10
20	794210-1	361-483912	1.47	1.31	1.25	1.19
22	794212-1	361-484012	1.54	1.37	1.31	1.25
24	794214-1	361-485212	1.61	1.44	1.37	1.30
Receptacle Housing						
8	794193-1	361-486412	1.09	0.97	0.93	0.88
10	794197-1	361-487612	1.23	1.09	1.05	1.00
12	794199-1	361-488812	1.29	1.14	1.09	1.04
14	794203-1	361-489012	1.35	1.21	1.15	1.09
16	794207-1	361-490612	1.37	1.23	1.18	1.11
18	794209-1	361-491812	1.42	1.27	1.22	1.15
20	794211-1	361-492012	1.47	1.31	1.25	1.19
22	794213-1	361-493112	1.54	1.37	1.31	1.25
25	794215-1	361-494312	1.61	1.44	1.37	1.30

MATE-N-LOK II

Mini Universal Matrix



- Locking Plug and Cap Housing assemblies
- Fully Polarised to ensure correct Mating
- Pins and sockets may be intermixed in the same Housing
- Contacts accept wire size range 30 - 16 AWG



Housing UL94V-0
 Contact Resistance 20mΩ
 Dielectric withstanding Voltage 1500V AC/VDC
 Current rating up to 10.5A Per circuit, 2 position
 Insulation Resistance 100MR
 Durability Up to 25 mating cycles
 Temperature Range -20°C To +65°C

239850

No. of Ways	Mftrs List No.	Order Code	Price Each			
			1+	100+	250+	500+
Plug						
9	794194-1	361-471212	0.95	0.84	0.80	0.76
12	794200-1	361-472412	1.15	1.02	0.98	0.98
15	794204-1	361-473612	1.21	1.07	1.03	1.03
Cap						
9	794195-1	361-474812	1.05	0.94	0.89	0.89
12	794201-1	361-475012	1.28	1.14	1.09	1.09
15	794205-1	361-476112	1.33	1.18	1.13	1.13

MATE-N-LOK II

Mini Universal Crimp Contacts



- Crimp Contacts: Brass, Tin plated
- supplied Loose



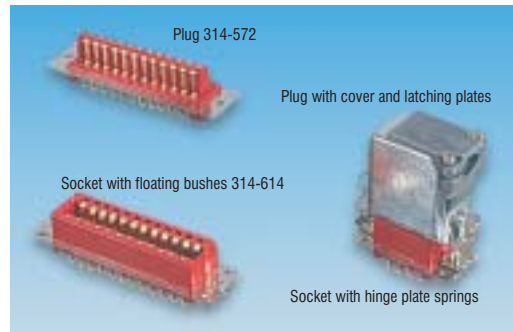
Contact mm ²	Insulation-Ø mm	L mm	Mftrs List No.	Order Code
Pin Contact				
0,05-0,12	0,89-1,27	19,69	794224-1	361-5315
0,12-0,3	1,19-1,75	19,69	794226-1	361-5327
0,3-0,8	1,50-2,39	19,69	794228-1	361-5339
0,5-1,2	2,01-3,20	19,69	794230-1	361-5340
Socket Contact				
0,05-0,12	0,89-1,27	19,69	794225-1	361-5352
0,12-0,3	1,19-1,75	19,69	794227-1	361-5364
0,3-0,8	1,50-2,39	19,69	794229-1	361-5376
0,5-1,2	2,01-3,20	19,69	794231-1	361-5388

239866

Mftrs List No.	Order Code	10+	Price Each 50+	100+
Pin Contact				
794224-1	361-531512	0.073	0.062	0.052
794226-1	361-532712	0.073	0.062	0.052
794228-1	361-533912	0.073	0.062	0.052
794230-1	361-534012	0.073	0.062	0.052
Socket Contact				
794225-1	361-535212	0.073	0.062	0.052
794227-1	361-536412	0.073	0.062	0.052
794229-1	361-537612	0.073	0.062	0.052
794231-1	361-538812	0.073	0.062	0.052
Crimp Tool				
0-0090707-2		1+		
22-18 (0.3-0.8mm ²)	423-251312	679.58		
0-0091522-1				
20-16 (0.5-1.3mm ²)	423-250112	248.61		

Red Range 5A

McMurdo



A range of connectors with a low insertion and withdrawal force, having barrier polarisation of plug relative to socket ensuring that incorrect contact cannot be made during blind insertion. Mouldings in red nylon PF.

Current rating @ 80°C 5A max
 Operating voltage 800V dc
 Breakdown voltage 3.5kV dc/ac peak
 Contact pitch 4.7mm

Insulation resistance (initially) 10000MΩ max
 Contact resistance (initially) 5mΩ
 Temperature range -40°C to +100°C

Note: All covers are supplied with side entry, but can all be changed to top entry if required.

CM124

No. of Ways	Mftrs. List No.	Order Code	Price Each			
			1+	25+	50+	100+
Plugs						
8	RP8	314-55912	6.38	5.75	5.60	5.44
16	RP16	314-56012	8.73	7.87	7.64	7.45
24	RP24	314-57212	11.97	10.78	10.50	10.23
32	RP32	314-58412	20.73	15.67	13.84	11.76
Sockets with Floating Bushes						
8	RS8	314-59612	7.28	6.56	6.38	6.21
16	RS16	314-60212	10.65	9.59	9.33	9.10
24	RS24	314-61412	15.17	13.69	13.32	12.94
32	RS32	314-62612	24.29	18.97	16.18	13.75
Covers						
8	RC108	314-64012	13.15	9.82	8.67	7.37
16	RC116	314-65112	14.15	10.56	9.32	7.94
24	RC124	314-66312	14.29	10.67	9.43	8.00
32	RC132	314-67512	14.76	11.00	9.74	8.27

*Terms and conditions apply

Order before 8pm for FREE next day delivery*



No. of Ways	Mftrs. List No.	Order Code	1+	25+	50+	100+	250+	500+
Hinge Plate Spring								
	RLH	314-68712	0.76	0.58	0.48	0.42	0.38	0.35
Order Multiple=4								
Latching Plates								
	RLL	314-69912	0.42	0.33	0.30	0.24	0.23	0.19

Wire Connectors

Winged Wire Connectors



- Colour coded to industry standards
- Designed for ease of use in tight spaces
- Square wire spring provides secure grip on conductor
- Flame retardant thermoplastic shell
- Approvals **UL, CSA**

Voltage Rating	600V
Working Temperature	105°C
Material	Thermoplastic, UL94V-2

312009

Wire Size	Order Code	Price Each		
		1+	5+	10+
18 To 10,AWG	443-104212	2.18	1.84	1.68
22 To 8,AWG	443-105412	2.73	2.30	2.10
18 To 8,AWG	443-106612	2.75	2.32	2.12
18 To 8,AWG	443-107812	4.10	3.65	3.30
14 To 6,AWG	443-108012	5.70	4.70	4.30

Push In Wire Connectors



- Solid wire push in connector
- Flame retardant thermoplastic
- Colour coded
- Approvals **UL, CSA**

Housing Material	Thermoplastic UL94V-2
Current Rating	24A
Working Temperature	110 C
Voltage Rating	600V
Wire Range	22 To 12 AWG

Height	Width	Depth
9.5mm	10.5mm	19.5mm

312010

No of Ways	Order Code	Price Each		
		10+	50+	100+
2 Red	443-110812	0.074	0.04	0.029
3 Orange	443-111012	0.088	0.048	0.034
4 Yellow	443-112112	0.101	0.055	0.039
5 Grey	443-113312	0.123	0.067	0.048
8 Black	443-114512	0.221	0.121	0.086

0.8mm Pitch

Plugs and Sockets



- Allows horizontal board to board stacking for design flexibility
- Fine pitch surface mount technology
- Board locating pegs on plug
- 10 to 50 way double row
- Polarised housing
- Low profile design

Voltage rating	500Vac	Temperature range	-40°C to +105°C
Current rating	0.5A	Housing	Polyamide UL94V-0
Dielectric strength	Vac	Contacts	Phosphor Bronze
Insulation resistance	50MΩ(250Vdc)		

Mftrs. List No. Plugs=M60-711XX05P, Sockets=M60-705XX05, where XX=No. of ways

335244

No. of Ways	Order Code	1+	25+	50+	100+	250+
SMT Plugs						
10+10	486-090112	1.49	1.34	1.22	1.08	1.02
15+15	486-091312	1.80	1.62	1.47	1.30	1.23
20+20	486-092512	2.16	1.95	1.77	1.57	1.47
25+25	486-093712	2.47	2.22	2.02	1.79	1.68
30+30	486-094912	2.89	2.60	2.37	2.10	1.97
40+40	486-095012	2.97	2.67	2.43	2.16	2.03
50+50	486-096212	3.36	3.02	2.75	2.44	2.29
SMT Sockets						
10+10	486-097412	1.32	1.19	1.08	0.96	0.90
15+15	486-098612	1.52	1.37	1.25	1.11	1.04
20+20	486-099812	1.71	1.54	1.40	1.24	1.17
25+25	486-100012	1.88	1.69	1.53	1.36	1.28
30+30	486-101212	2.26	2.03	1.85	1.64	1.54
40+40	486-102412	3.28	2.96	2.69	2.38	2.24
50+50	486-103612	3.66	3.29	2.99	2.65	2.49

1.00mm Pitch

IEEE 1386 - Mezzanine

1.00mm (.039") Pitch - Plugs and Receptacles



- Mated heights 8, 9, 10, 11, 12, 13, 14 and 15mm
- 64 circuits
- Leaf style design protects pins
- Antiflux design
- Low insertion force
- High temperature LCP housing for use with reflow solder processes



The IEEE1386 Standard contains the details for adding standardized PCI mezzanine cards to VMEbus and Multibus host boards. There are also many LAN, WAN, telecommunications, PC and workstation users who want a standardized mezzanine scheme, and see the IEEE1386 as the best approach. The fully shrouded leaf-style design minimizes the chance of damaging plug contacts, and our receptacle contacts feature a low mating force that reduces PC board stress. Gold over Nickel contact plating enhances long-term reliability and the UL 94V-0 LCP housings withstand SMT reflow processes. Excellent tolerance absorption allows the connector to be used in combinations of 1-4 mated pairs for up to 256 circuits.

Voltage Rating	100V	Operating temperature range:	-55°C to 85°C
Current Rating	1.0A	Mating/Unmating Force	25 g Max / 50 g Min - per contact
Contact Resistance	30mR	Contacts	Phosphor Bronze Gold plated
Withstand Voltage	250V	Approval	UL File No. E29179
Insulation Resistance	1000MR		

335214

Description	Mftrs. List No.	Order Code	1+	10+	50+	250+	500+
Headers							
8.0mm	714360164	477-130812	3.60	3.40	3.10	2.85	2.60
9.0mm	714361164	477-131012	3.60	3.40	3.10	2.85	2.60
10.0mm	714362164	477-132112	3.60	3.40	3.10	2.85	2.60
Sockets							
8/9/10 mm	714390164	477-133312	3.40	3.22	3.00	2.65	2.45
11/12 mm	714391164	477-134512	3.40	3.22	3.00	2.65	2.45
13 mm	714392164	477-135712	3.40	3.22	3.00	2.65	2.45
14/15 mm	714393164	477-136912	3.40	3.22	3.00	2.65	2.45

2.00mm Pitch

2.0mm Datamate SMT / Crimp



- Suitable for board to board, board to wire and wire to wire applications
- Four leaf beryllium copper contact suitable for high speed data transmission
- Fully shrouded contacts
- Polarised mouldings
- Latched versions for additional strain relief
- Location pegs on SMT connectors
- Crimp contacts are rear insertable and replaceable

Specification

Current Rating	3.3A at 25°C
Working Voltage	120V dc or ac peak
Contact Resistance	25 mΩ max
Insulation Resistance	100MΩ min at 500V dc
Proof Voltage	360V dc or ac peak
Mating Cycles	500
Housing Mat	Thermoplastic GF UL94V-0
Contact Material	Female - Brass shell beryllium copper inner contact Male - Brass
Contact Plating	Gold
Large Bore	22 AWG BS3G210 Type A
Small Bore	28-24 AWG BS3G210 Type A

233270

No Ways	Mfrs. List No.	Order Code	1+	10+	50+
Plug Vertical SMT					
8	M80-6460805P	390-663212	2.34	2.11	1.90
10	M80-6461005P	390-664412	2.70	2.43	2.19
12	M80-6461205P	390-665612	3.09	2.78	2.50
14	M80-6461405P	390-666812	3.47	3.13	2.82
16	M80-6461605P	390-667012	3.81	3.42	3.08
18	M80-6461805P	390-668112	4.17	3.75	3.38
20	M80-6462005P	390-669312	4.58	4.12	3.71
Plug Vertical SMT Locking Latch					
8	M80-6470805P	390-670012	2.80	2.52	2.27
10	M80-6471005P	390-671112	3.16	2.84	2.56
12	M80-6471205P	390-672312	3.55	3.19	2.87
14	M80-6471405P	390-673512	3.93	3.54	3.18
16	M80-6471605P	390-674712	4.26	3.84	3.45
18	M80-6471805P	390-675912	4.63	4.16	3.74
20	M80-6472005P	390-676012	5.03	4.53	4.08
Plug Vertical SMT Friction Latch					
8	M80-6480805P	390-677212	2.86	2.57	2.32
10	M80-6481005P	390-678412	3.21	2.89	2.60
12	M80-6481205P	390-679612	3.60	3.23	2.91
14	M80-6481405P	390-680212	3.98	3.59	3.22
16	M80-6481605P	390-681412	4.32	3.89	3.49
18	M80-6481805P	390-682612	4.68	4.21	3.80
20	M80-6482005P	390-683812	5.09	4.58	4.12
Socket Vertical SMT					
8	M80-6970805P	390-684012	4.15	3.74	3.37
10	M80-6971005P	390-685112	4.98	4.49	4.04
12	M80-6971205P	390-686312	5.81	5.24	4.71
14	M80-6971405P	390-687512	6.65	5.98	5.39
16	M80-6971605P	390-688712	7.51	6.75	6.08
18	M80-6971805P	390-689912	8.35	7.52	6.76
20	M80-6972005P	390-690512	9.18	8.27	7.44
Male Crimp Plugs					
Plug Crimp Small Bore Locking Latch					
8	M80-8120805	390-691712	2.27	2.05	1.84
10	M80-8121005	390-692912	2.68	2.41	2.17
12	M80-8121205	390-693012	3.09	2.79	2.51

No Ways	Mfrs. List No.	Order Code	1+	10+	50+
Plug Crimp Large Bore Locking Latch					
8	M80-8130805	390-694212	1.78	1.60	1.44
10	M80-8131005	390-695412	2.05	1.84	1.66
12	M80-8131205	390-696612	2.33	2.09	1.88
Plug Crimp Small Bore Friction Latch					
8	M80-8160805	390-697812	2.33	2.09	1.88
10	M80-8161005	390-698012	2.74	2.46	2.22
12	M80-8161205	390-699112	3.15	2.83	2.55
Plug Crimp Large Bore Friction Latch					
8	M80-8170805	390-700412	1.78	1.60	1.44
10	M80-8171005	390-701612	2.05	1.84	1.66
12	M80-8171205	390-702812	2.33	2.09	1.88
Crimps					
Large Bore	M80-0400005	390-703012	0.135	0.125	0.114
Small Bore	M80-0410005	390-704112	0.21	0.187	0.166
Tooling					
Crimp Tool	M22520-02-01	105-83712	233.66		
Positioner	T5747F	495-94312	65.00		
Ins/Ext Tool	Z80-250	390-705312	97.76		
Separator	T5746F	495-96712	20.00		

2.00mm Pitch Headers -SMT

Pin Headers - 90° Gold Plated, SIL and DIL



Pitch = 2mm			
Mfrs. List No.	Single row=M22-533xx05, Double row=M22-543xx05, where xx=No. of ways		
Contact rating	1A	Housings	Nylon 6T UL94V-0
Contact resistance	20mΩ	Contacts	Phosphor Bronze
Proof voltage	500V rms	Plating	Gold
Insulation resistance	5000MΩ		
Temperature range	-40°C to +105°C		

335246

No. of Ways	Order Code	10+	50+	100+	500+	1K+
Single Row						
Order Multiple = 10						
3	486-104812	0.21	0.19	0.17	0.15	0.14
4	486-105012	0.28	0.25	0.23	0.20	0.19
5	486-106112	0.35	0.32	0.29	0.25	0.24
6	486-107312	0.42	0.38	0.35	0.31	0.29
8	486-108512	0.56	0.51	0.46	0.41	0.38
10	486-109712	0.70	0.63	0.57	0.51	0.48
12	486-110312	0.84	0.76	0.69	0.61	0.57
Order Multiple = 1						
20	486-111512	1.40	1.26	1.15	1.02	0.96
25	486-112712	1.76	1.58	1.44	1.27	1.20
Double Row						
Order Multiple = 10						
3+3	486-113912	0.42	0.38	0.34	0.30	0.28
4+4	486-114012	0.56	0.50	0.46	0.41	0.38
5+5	486-115212	0.70	0.63	0.57	0.51	0.48
6+6	486-116412	0.84	0.76	0.69	0.61	0.58
Order Multiple = 1						
8+8	486-117612	1.12	1.01	0.92	0.81	0.76
10+10	486-118812	1.40	1.26	1.15	1.02	0.96
12+12	486-119012	1.69	1.52	1.38	1.23	1.15
20+20	486-120612	2.81	2.53	2.30	2.04	1.92
25+25	486-121812	3.51	3.16	2.87	2.55	2.39

Flat Flexible Cable
0.5mm, 1.0mm and 1.25 Pitch



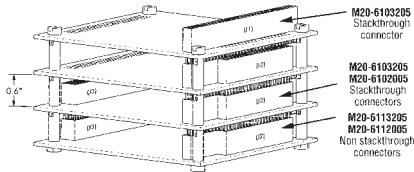
- Flat flexible cable for use with FFC/ FCP range of connectors
- Reinforcing tape bonded to underside for cable to ensure easy and accurate insertion into the connector
- Overall length 210mm

Insulation Material Polyester (Flame Resistant) Max operating temperature 80°C
CP415

No. of Ways	Order Code	Price Each				
		1+	25+	50+	100+	250+
0.5mm Pitch						
10	329-500012	1.24	1.12	1.06	1.00	0.97
14	329-501112	1.10	0.98	0.92	0.86	0.83
16	329-502312	1.25	1.17	1.09	1.05	0.99
20	329-503512	1.37	1.22	1.18	1.14	1.08
24	335-264012	1.52	1.37	1.27	1.16	1.09
30	329-504712	1.75	1.61	1.53	1.45	1.37
35	335-265112	1.84	1.70	1.63	1.47	1.40
40	335-266312	2.09	1.82	1.67	1.54	1.47
45	335-267512	2.14	1.87	1.72	1.58	1.53
50	335-268712	2.19	1.91	1.77	1.63	1.58
mm1mm Pitch						
10	329-505912	0.56	0.51	0.49	0.43	0.39
14	329-506012	0.61	0.56	0.54	0.52	0.49
16	329-507212	0.68	0.63	0.61	0.59	0.57
20	329-508412	0.80	0.74	0.72	0.70	0.68
26	329-509612	0.97	0.92	0.90	0.87	0.83
30	329-510212	1.26	1.21	1.18	1.11	1.05
mm1.25mm Pitch						
4	329-511412	0.39	0.36	0.35	0.33	0.31
6	329-512612	0.41	0.39	0.38	0.36	0.34
8	329-513812	0.45	0.41	0.39	0.37	0.35
10	329-514012	0.48	0.44	0.43	0.41	0.38
14	329-515112	0.56	0.50	0.48	0.45	0.42
16	329-516312	0.61	0.55	0.53	0.50	0.47
20	329-517512	0.96	0.88	0.86	0.81	0.77
30	329-518712	1.22	1.10	1.06	1.01	0.95
40	329-570912	1.92	1.75	1.71	1.62	1.54

PC/104 Connectors

Bus Connectors

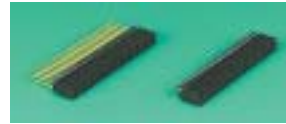


- PC/104 Plus is an industry standard for PC applications
- Embedded systems designers can reduce costs risks and lead times
- Dedicated and embedded PC architecture is an accepted platform for:
 - Vending Machines
 - Test equipment
 - Medical equipment
 - Communication devices
 - Laboratory instruments

PC/104 and the PC/104 logo are trademarks of the PC/104 consortium.

CP390

Bus Connectors



- 32+32 way supports an 8-bit system
- 20+20 way combined with a 32+32 way supports a 16-bit system
- 4 x 30, 120 way available, 2.00mm pitch

- Press-Fit versions eliminate costly hand soldering and allow board rework

Current rating	1A	Housings	Glass Filled Polyester UL94V-0
Voltage proof	1000V ac	Contacts	Phosphor Bronze
Contact Resistance	10mΩ max	Finish	Gold Flash Over Nickel
Insulation resistance	5000 MΩ min.	Average insertion force	103.2g (1N) per contact
Temperature range	-55°C to +105°C	Average withdrawal force	71.5g (0.7N) per contact

PC/104 and the PC/104 logo are trademarks of the PC/104 consortium.

335250

No. of Ways	Mfrs. List No.	Order Code	Price Each		
			1+	10+	100+
Stackthrough					
40	M20F6102005	359-90712	2.02	1.80	1.63
64	M20F6103205	359-95612	2.94	2.61	2.37
Stackthrough Press-Fit					
40	M20-6152005	486-140112	7.34	6.61	6.01
64	M20-6153205	486-141312	8.01	7.21	6.55
120	M22-6053005	486-144912	20.87	18.78	17.07
Non-Stackthrough					
40	M20F6112005	359-97012	1.91	1.70	1.54
64	M20F6113205	359-99312	2.50	2.23	2.02
Non-Stackthrough Press-Fit					
40	M20-6162005	486-142512	4.32	3.88	3.53
64	M20-6163205	486-143712	6.47	5.83	5.30
120	M22-6063005	486-145012	18.49	16.64	15.13

PCB Connector System

Stocko Connector System

RFK2 Series



- 2.5mm pitch single in line, through hole vertical PCB Headers and Sockets
- A Rugged IDC or Discrete wire connector system.
- Latching mechanism gives secure "lock in" between header and socket and prevents backout occurring

Maximum Voltage	1500V ac	Housing	PC - VO
Working Temperature Range	-20°C to 120°C	Pitch	2.5mm
Contact plating	Tin	Wire size	24AWG Stranded or solid conductor
Contact Material	Phosphor Bronze		

339935

No of Ways.	Mfrs. List No.	Order Code	Price Per Pack of 10			
			1+	10+	50+	100+
2.5mm Socket						
2	MKFL13262-6-0-202	439-786112	2.92	2.76	2.60	2.43
3	MKFL13263-6-0-303	439-787312	2.66	2.52	2.37	2.22
4	MKFL13264-6-0-404	439-788512	3.40	3.21	3.02	2.83
5	MKFL13265-6-0-505	439-789712	3.64	3.43	3.23	3.03
6	MKFL13266-6-0-606	439-790312	4.20	3.96	3.73	3.50
7	MKFL13267-6-0-707	439-791512	4.58	4.32	4.07	3.82
8	MKFL13268-6-0-808	439-792712	4.78	4.52	4.25	3.98
9	MKFL13269-6-0-909	439-793912	5.04	4.76	4.48	4.20
10	MKFL13270-6-0-1010	439-794012	5.62	5.30	4.99	4.68
PCB Header						
2	MKS1851-6-0-202	439-795212	1.56	1.48	1.39	1.30
3	MKS1853-6-0-303	439-796412	1.50	1.41	1.33	1.25
4	MKS1854-6-0-404	439-797612	1.62	1.53	1.44	1.35
5	MKS1855-6-0-505	439-798812	1.78	1.68	1.58	1.48
6	MKS1856-6-0-606	439-799012	1.98	1.87	1.76	1.65
7	MKS1857-6-0-707	439-800212	2.32	2.19	2.06	1.93
8	MKS1858-6-0-808	439-801412	2.58	2.43	2.29	2.15
9	MKS1859-6-0-909	439-802612	2.66	2.52	2.37	2.22
10	MKS1860-6-0-1010	439-803812	2.74	2.58	2.43	2.28

PCB Connector System - continued

Card Edge Socket



- Card edge connector eliminates the need for a PCB mounted header
- 2.5mm pitch single in line, through hole vertical PCB Headers and Sockets
- A Rugged IDC or Discrete wire connector system.



Maximum Voltage	1500V ac	Housing	PC - VO
Working Temperature Range	-20°C to 120°C	Pitch	2.5mm
Contact plating	Tin	Wire size	24AWG Stranded or solid conductor
Contact Material	Phosphor Bronze		

333936

10 Per Pack		Price per Pack				
No. Poles	Mftrs. List No.	Order Code	1+	10+	50+	100+
3	MKFL13473-6-0-303	439-804012	3.38	3.20	3.01	2.82
4	MKFL13474-6-0-404	439-805112	3.88	3.67	3.45	3.23
5	MKFL13475-6-0-505	439-806312	4.20	3.96	3.73	3.50
6	MKFL13476-6-0-606	439-807512	4.42	4.18	3.93	3.68
7	MKFL13477-6-0-707	439-808712	4.78	4.52	4.25	3.98
8	MKFL13478-6-0-808	439-809912	5.08	4.79	4.51	4.23
10	MKFL13480-6-0-1010	439-810512	5.70	5.39	5.07	4.75

Shorting Link

Shorting Link, Surface Mount



- Designed to link PCB tracks where through hole links are not possible
- Easy Placement
- High current
- Small footprint

L = 12.3, W = 1.8 (2.35 including standoffs), H = 1.8

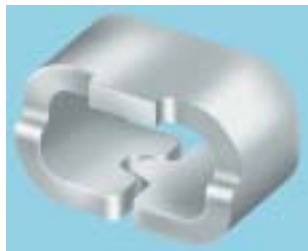
Material	Copper Alloy
Finish	Tin/Lead Plated

335251

100 per Pack	Price Per Pack			
Order Code	1+	10+	50+	100+
486-147412	6.59	5.93	5.39	4.78

Test Point

Surface Mount



- Ideal for use with most standard probes, clips and hooks
- Suitable for automatic or manual test
- Improved finished goods quality
- Strong and durable

Material	Copper Alloy
Finish	Tin/Lead Plated

L = 3.25, W = 2.05, H = 2

335252

100 per Pack	Price Per Pack			
Order Code	1+	10+	50+	100+
486-146212	6.57	5.91	5.37	4.77

PCB Terminal Blocks



Rising Clamp Interlocking 16A

5mm Pitch



H=16, W=9.5, Pitch=5, Pin dia=1.1

- Interlocking PCB terminal block with rising cable clamp design
- Features good cable retention and repetitive operation
- 1mm test probe facility

Maximum voltage	250V ac	Clamping screw	M3 steel zinc plated
Current rating	16A	Housing	Polyamide UL94V-0
Temperature range	-40°C to +125°C	Colour	Light Grey
Rising cable clamp	Steel zinc plated	Maximum wire size	2.5mm²

Mftrs. List No. 819/x, where x= No. of ways

209401

Order Multiple = 5		Price Each					
No of Ways	Length mm	Order Code	5+	50+	100+	500+	1K+
2	10	151-79412	0.38	0.31	0.26	0.22	0.21
3	15	151-79512	0.55	0.47	0.40	0.34	0.31
4	20.5	151-79612	0.74	0.62	0.52	0.44	0.40
6	30.5	151-79712	1.09	0.94	0.80	0.64	0.59
8	40.9	469-86512	1.56	1.32	1.11	0.94	0.84
10	50.9	469-87712	1.96	1.67	1.40	1.18	1.06
12	61.5	151-79812	2.18	1.84	1.53	1.29	1.18

IEC Inlets

Power Entry Module



6200 Series - Medical Grade



- Screw mounting, 2 x M3
- Shock safe 1 pole fuseholder, 5 x 20mm
- Plug removal necessary for fuse link replacement
- Protection Class 1, Pin Temp 70°C
- Complies to IEC 60320-1 & EN 6032-1 C14/C15
- 4.8 x 0.8mm or 6.3 x 0.8mm terminals
- Approvals. SEV, VDE, SEMKO, UL, CSA, OVE

Panel cut out	27.5mm x 30.5mm		
Depth behind front panel	23.5mm		
Contact rating	10A	Contact rating	10A
Voltage rating	250V ac	Temperature range	-25°C To + 70°C
Contact resistance	5mΩ	Housing material	

236892

Mftrs.		Price Each				
List No.	Terminals	Order Code	1+	10+	50+	100+
6200.2200	4.8 x 0.8	307-689112	1.64	1.09	0.92	0.78
6200.2300	6.3 x 0.8	307-690812	1.64	1.09	0.92	0.78

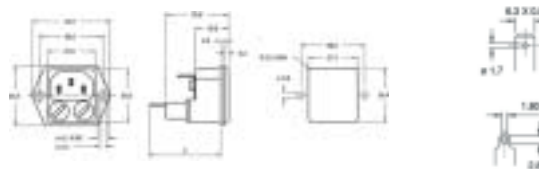
Power Entry Module



Series 4707



- Panel Mount : Screw on version, Front or rear mounting
- Appliance inlet, Fuse holder takes fuse size 5 x20 mm



Voltage Rating	250V
Current Rating	10A
Terminals	Solder or quick connect 6.35x0.8
Fuseholder	1- or 2-pole, Shocksafe category PC2

333928

Description		Price Each				
Mftrs list No.	Order Code	1+	10+	25+	50+	
1pol. Quick connect	4707.1000	472-499912	6.85	6.19	5.65	5.65
1pol. Solder joint	4707.1300	472-500112	6.85	6.19	5.65	5.65
2pol. Quick connect	4707.2000	443-084012	6.85	6.19	5.65	5.65
2pol. Solder joint	4707.2300	472-502512	6.85	6.19	5.65	5.65

*Terms and conditions apply

Order before 8pm for FREE next day delivery*



X-ON Electronics

Largest Supplier of Electrical and Electronic Components

Click to view similar products for [Epic manufacturer](#):

Other Similar products are found below :

[44420040 + 73002716](#) [8701+50101200](#) [19426500](#) [10.0340+10.1930+12.9544](#) [10.0720+10.1710](#) [10.1130+12.9545](#) [76123100](#) [HA4-FK-TE-CH-M-M20](#) [44420040 + 73028500](#) [11161000](#) [11.1610](#) [10.4295](#) [44423220](#) [44423224](#) [10.0720](#) [10.1960](#) [44420040 + 73002720](#) [44420037 + 73002720](#) [72004000 + 73002756](#) [72004000 + 73018000](#) [72004000 + 73028500](#) [73004610](#) [10.4235](#) [10.4320](#) [10.4225](#) [9198+00022030](#) [8702+50101200](#) [10.4265+10.4295+10.4310+10.4320](#) [44423216](#) [44423217](#) [72004000 + 73002740](#) [24420055 + 73002720](#) [10.4265+10.4235+10.4200+10.4210](#) [10.4265+10.4245+10.4200+10.4210](#) [74020000](#) [8923+00022030](#) [10.1970](#) [10.4275+10.4235+10.4310+10.4320](#) [10.4401](#) [10.1950](#) [10.4210](#) [10121000+10196000+12954500](#) [10102000](#) [10.4265+10.4245+10.4310+10.4320](#) [10.4265](#) [44423251](#) [72004000 + 73002716](#) [72040010](#) [8722+00022030](#) [10.4264](#)