



Clifford & Snell

# YO4/YL4

Industrial Audible and Visual Alarm

~ Yodac ~

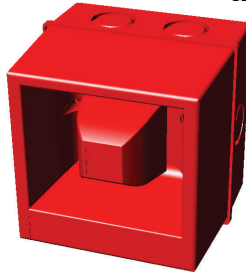
Tom Cribb Road, Thamesmead,  
London SE28 0BH  
Tel: +44 (0)20 8316 4477  
or (0)20 8317 1717  
Fax: +44 (0)20 8317 2400  
Email: cliffordandsnell@aol.com  
Web Site: www.cliffordandsnell.com



YL4



KM91259

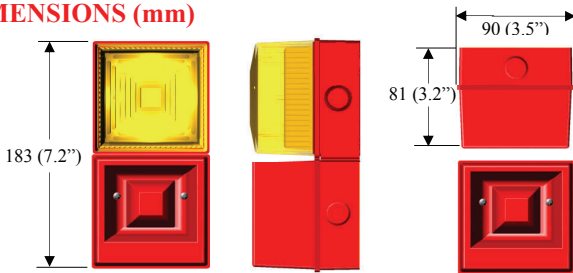


YO4

## MAIN FEATURES

- 2 Stage alarm
- High sound output
- 3 wire polarised DC (Not additional voltage option) & AC, or 2 wire bi-polar for DC only.
- 3 wire AC second stage control
- Complies with BS 5839
- Strobe 2.5 and 5 joule.
- Choice of 6 lens colours: Amber (A), Red (R), Green (G), Opal (O), Blue (B) and Clear (C) made from flame retardant polycarbonate plastic
- Red / white flame retardant ABS plastic enclosure.
- Continuously rated
- Flush mounting base available
- 32 selectable tones meeting international regulations
- Sound selection via 5 way DIL switch

## DIMENSIONS (mm)



All dimensions quoted are approximate only and subject to change without notice as are technical features resulting from continual development and improvement.

## CONFIGURATOR

**Unit type** YO4

**Supply Voltage** 24Vdc  
48Vdc  
115Vac  
230Vac  
24Vdc and 48Vdc  
110Vdc

**Material** Red Flame  
Red Normal  
White

**IP65**

**Optional Independent 2nd Stage**

**Certification** USA/Canada

**Unit type** YL4

**Strobe** 12Vdc 2.5 joules

**Supply Voltage and Flash Energy** 24Vdc 2.5 joules  
24Vdc 5.0 joules  
48Vdc 5.0 joules  
115Vac 5.0 joules  
230Vac 5.0 joules

**Lens Colour** A, R, G, O, B, C

**Material** Red Flame  
Red Normal  
White

**IP65**

**Optional Independent 2nd Stage**

**Certification** USA/Canada

## TECHNICAL SPECIFICATION

- Operating temperature -25 to +55 deg C
- Storage temperature -40 to +70 deg C
- Operating voltage 24Vdc, 48Vdc, 115Vac, 230Vac +/- 10%
- Additional voltage options (Sounders only) 24Vdc and 48Vdc (BT) 110Vdc (12Vdc versions will produce approx. 6dB less output)
- Relative humidity 95% @ 40 deg C
- Sound output 106dB(A) at 1 mtr
- IP54 rated std, IP65 (WR) to order
- Weight: YO4 0.22Kg (DC), 0.32Kg (AC)  
YL4 0.47Kg (DC), 0.57Kg (AC)
- Volume control allowing 18dB(A) adjustment
- Minimum current consumption 20mA
- Optional independent 2nd stage via second DIL switch (DC only)

## MOUNTING

The YO4/YL4 series alarm should be mounted to a reasonably flat wall or bulkhead of suitable material using the internal fixing holes. The recommended fixing screws are dia 4.5 mm max x 20 mm long. To maintain the integrity of the weather seal, the cable must be fitted using a suitable sealed gland.

## LINE MONITORING (DC Only) excludes additional voltage options

- 3 Wire 2 stage or 2 wire single stage, monitor via reverse polarity  
- 2 Wire 2 stage i.e. bi-polar inputs, monitor via threshold (applied voltage <1V)  
End of line resistor. Minimum 3K3 ohm 0.5 watts, wire-wound or metal film type.

## APPROVAL SPECIFICATION

UL 1638, UL 464  
C22.2 No. 205-M1983, CAN/ULC-5526-M87  
BS EN 54-3 : 2001 incorporates amendment A1 : 2002

<b>YO4 Vdc</b> 0.22 Kg	<b>YO4 Vac</b> 0.32 Kg	<b>YL4 Vdc</b> 0.47 Kg
<b>YO4 Vdc</b> 2.5 Kg	<b>YL4 Vac</b> 0.57 Kg	

## **X-ON Electronics**

Largest Supplier of Electrical and Electronic Components

*Click to view similar products for [Clifford And Snell](#) manufacturer:*

Other Similar products are found below :

[YL50/L50/A/RF/WR](#) [YA80/D/RF/SU/WR](#) [YA40/D/RN/WR](#) [YA50/L/RF/WR](#) [YL40/N50/A/RN/WR](#) [YL40/D50/A/RN/WR](#)

[FD40/D00/A/RN/8](#) [FL40/N50/R/RN](#) [YL50/N50/R/RF/WR](#) [YA50/N/RF/WR](#) [YA50/D/RF/WR](#) [YL50/D50/R/RF/WR](#) [YA30/D/RF/WR](#)