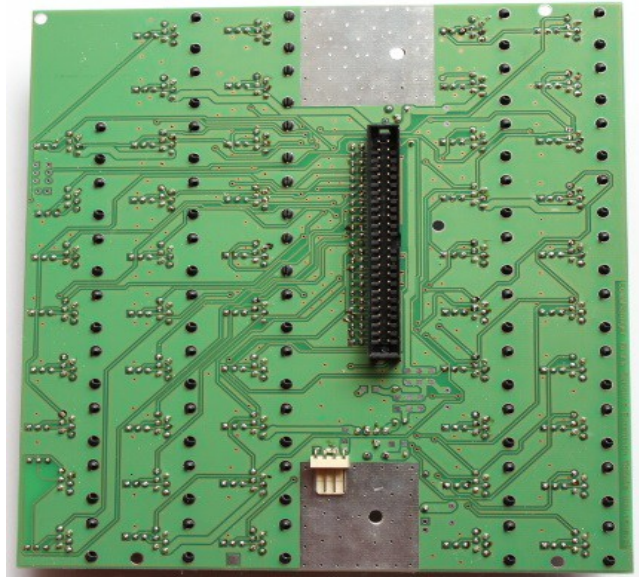
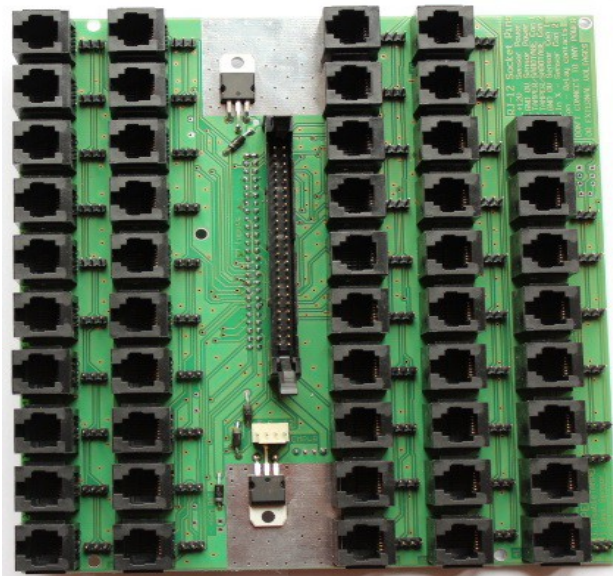


1. Input Expander (48) for CM for professional installation - EXP-48



- ✓ 48 * RJ-12 telephone socket for connection of security sensors (switch-board)
- ✓ Power supply for GSM/SMS module
- ✓ Tamper options set by jumpers
- ✓ Fast Installation, Deinstallation, Service, Maintenance
- ✓ 2*IDC-50M socket compatible with LevelManager, CommManager, eHouse PRO inputs for direct connection with IDC-50F flat cable



Smart Home, Building, Hotel, Office Automation

2. Contact and Cooperation

iSys – Intelligent Systems

Wygoda 14, 05-480 Karczew

Poland

tel: +48504057165

email: is@isys.pl

GPS: (N:52 st 2min 44.3s; E:21st 15min 49.19s)

[Map](#)

Producer, manufacturer, developer home page in English:

<http://home-automation.isys.pl/> - Producer homepage

<http://smart.ehouse.pro/> - Do It Yourself, designing, development, examples, applications

<http://eHouse.Biz/> - eHouse smart home producer online shop

http://www.isys.pl/?home_automation - Other Languages (for information only not for reference)

Serwisy eHouse w języku polskim:

<http://inteligentny-dom.ehouse.pro/> Zrób to sam, programowanie, przykłady, projektowanie, zastosowania

<http://www.isys.pl/> - strona WWW producenta

<http://ehouse.net.pl/> - sklep internetowy producenta inteligentnego domu eHouse

<http://www.ehouse.pro/> - Automatyka domu, budynku, hoteli, pensjonatów

<http://sterowanie.biz/> - Sterowanie domem, budynkiem, mieszkaniem

X-ON Electronics

Largest Supplier of Electrical and Electronic Components

Click to view similar products for [Power Management IC Development Tools](#) category:

Click to view products by [ISYS INTELLIGENT SYSTEMS](#) manufacturer:

Other Similar products are found below :

[EVAL6482H-DISC](#) [EVAL-AD5522EBUZ](#) [EVAL-ADM1060EBZ](#) [EVAL-ADM1073MEBZ](#) [EVAL-ADM1166TQEBZ](#) [EVAL-ADM1168LQEBZ](#) [EVAL-ADM1171EBZ](#) [EVAL-ADM1276EBZ](#) [EVB-EN5319QI](#) [EVB-EN5365QI](#) [EVB-EN6347QI](#) [EVB-EP5348UI](#) [MIC23158YML EV](#) [MIC23451-AAAYFL EV](#) [MIC5281YMME EV](#) [ADM00513](#) [ADM8611-EVALZ](#) [ADM8612-EVALZ](#) [ADM8613-EVALZ](#) [ADM8615-EVALZ](#) [ADP1046ADC1-EVALZ](#) [ADP1055-EVALZ](#) [ADP122-3.3-EVALZ](#) [ADP130-0.8-EVALZ](#) [ADP130-1.2-EVALZ](#) [ADP130-1.5-EVALZ](#) [ADP130-1.8-EVALZ](#) [ADP160UJZ-REDYKIT](#) [ADP166UJ-EVALZ](#) [ADP1712-3.3-EVALZ](#) [ADP1714-3.3-EVALZ](#) [ADP1715-3.3-EVALZ](#) [ADP1716-2.5-EVALZ](#) [ADP1740-1.5-EVALZ](#) [ADP1752-1.5-EVALZ](#) [ADP1754-1.5-EVALZ](#) [ADP1828LC-EVALZ](#) [ADP1870-0.3-EVALZ](#) [ADP1871-0.6-EVALZ](#) [ADP1873-0.6-EVALZ](#) [ADP1874-0.3-EVALZ](#) [ADP1876-EVALZ](#) [ADP1879-1.0-EVALZ](#) [ADP1882-1.0-EVALZ](#) [ADP1883-0.6-EVALZ](#) [ADP197CB-EVALZ](#) [ADP199CB-EVALZ](#) [ADP2102-1.25-EVALZ](#) [ADP2102-1.2-EVALZ](#) [ADP2102-1.875EVALZ](#)