

# CLIFF

## 1U RACKS

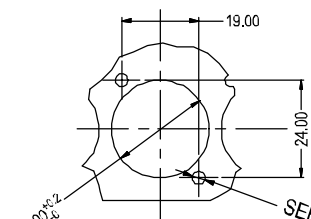
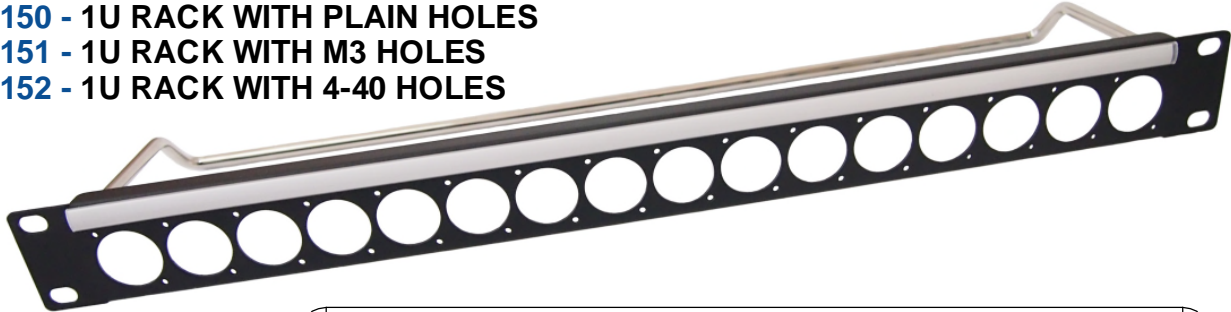
16 holes of Ø24mm with cable bar and label strip

### VARIANTS

**CP30150** - 1U RACK WITH PLAIN HOLES

**CP30151** - 1U RACK WITH M3 HOLES

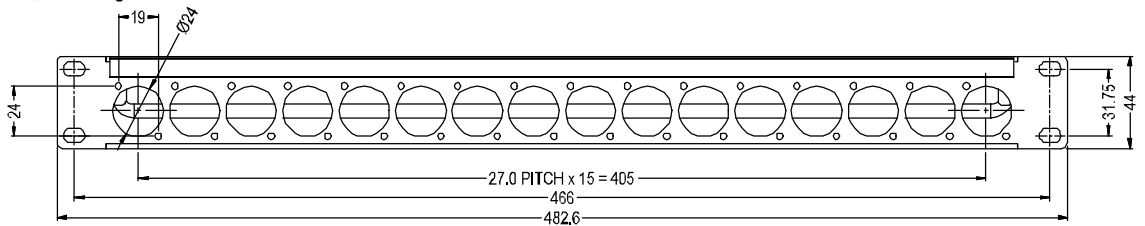
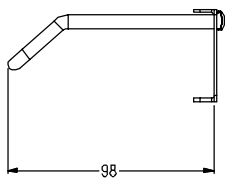
**CP30152** - 1U RACK WITH 4-40 HOLES



DETAIL VIEW  
(16 POSITIONS)

SEE VARIANTS  
TABLE

Variants  
Fixing Hole  
CP30150 - Plain Ø3.20  
CP30151 - Threaded M3x0.50  
CP30152 - Threaded #4-40 UNC



## LOADED RACKS



**CP30170** - 1U Rack loaded with 16 x 75Ω Insulated BNC Connectors. M3 holes.

**CP30171** - 1U Rack loaded with 16 x 75Ω Insulated BNC Connectors. #4-40 holes.



## X-ON Electronics

Largest Supplier of Electrical and Electronic Components

*Click to view similar products for [RF Adapters - In Series](#) category:*

*Click to view products by [Cliff](#) manufacturer:*

Other Similar products are found below :

[5919-1503-000](#) [5919-9503-000](#) [5945-9503-000](#) [651A505](#) [7122-1502-000](#) [9030-9523-502](#) [932A505](#) [PN2C](#) [A0407000](#) [R114703000](#)  
[R114703000W](#) [R114753000](#) [R125704000](#) [R125771001](#) [R127871001](#) [R141704000W](#) [R141710000W](#) [R141723161](#) [R141730000](#)  
[R141770000](#) [R142704000W](#) [R142720000](#) [R142720000W](#) [R142720700](#) [R143730700](#) [R143770000](#) [R161703000W](#) [R161730000](#)  
[R161730000W](#) [R161753000W](#) [R161791530W](#) [R176770000](#) [R201705000](#) [R222705200](#) [R222M40010W](#) [R222M40050](#) [R223703080](#)  
[R223703180](#) [R300.124.403](#) [R316754000](#) [AD78TL](#) [HRM-513S](#) [1996352-2](#) [2157155-1](#) [AD158](#) [ADRMF370](#) [2101130-1](#) [R114704000W](#)  
[R114720000W](#) [R125705000](#)