

## Series 39

### 0.25 AMP MINIATURE LED LIGHTED

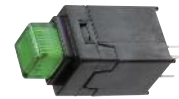
This highly reliable low cost pushbutton features bifurcated contacts that have wiping, self-cleaning action. The PC terminals allow for vertical mounting, while an optional connector allows for right angle mounting.

#### APPLICATIONS

- Control panel assemblies
- Recording equipment
- Telecom switching systems
- Scientific instrumentation
- Telecom test gear

#### KEY FEATURES:

- Momentary or maintained action
- Lighted (T-1 LED) or non-lighted
- Variety of button and keycap styles
- Wave solderable
- Bifurcated silver contacts



ACTUAL SIZE

#### ORDERING INFORMATION:

##### Switches

Part Number	Lighted	LED Color	Button Color	Button Style	Action
39-12101	Yes*	—	Clear	Button	Momentary
39-12111	Yes*	—	Red	Button	Momentary
39-12113	Yes*	—	Yellow	Button	Momentary
39-12114	Yes*	—	Smoke Grey	Button	Momentary
39-12502	No	—	White	Button	Momentary
39-12503	No	—	Red	Button	Momentary
39-12509	No	—	Black	Button	Momentary
39-12601	Yes	Red	Clear	Button	Momentary
39-12712	Yes	Green	Green	Button	Momentary
39-13101	Yes*	—	Clear	Button	Maintained
39-13113	Yes*	—	Yellow	Button	Maintained
39-22100	Yes*	—	—	Keycap	Momentary
39-22500	No	—	—	Keycap	Momentary
39-23100	Yes*	—	—	Keycap	Maintained
39-23500	No	—	—	Keycap	Maintained

\* LED not included; LED support 80-390003 supplied in bulk.

##### Button/Keycap Colors

Part Number	Lighted	Color	Cap Size
80-390101	Yes*	White	Large
80-390102	Yes*	Light Grey	Large
80-390103	Yes*	Dark Grey	Large
80-390106	No	Light Grey	Large
80-390107	No	Dark Grey	Large
80-390108	No	Black	Large
80-390111	Yes**	Black	Small

\* Requires light pipe 80-390100 (order separately)

\*\* Requires light pipe 80-390109 (order separately)

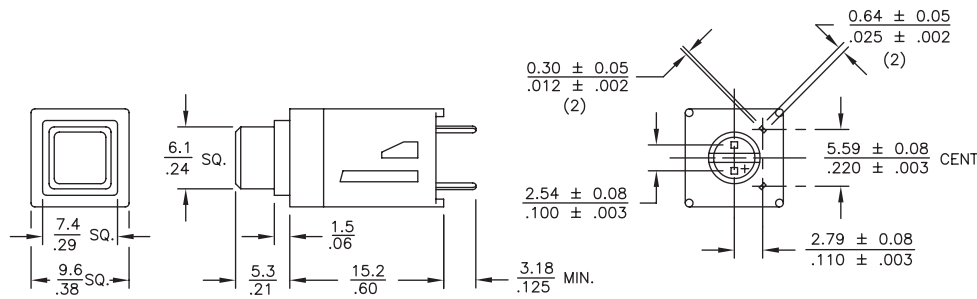
##### Connectors

Part Number	Mount
39-800001	In-Line

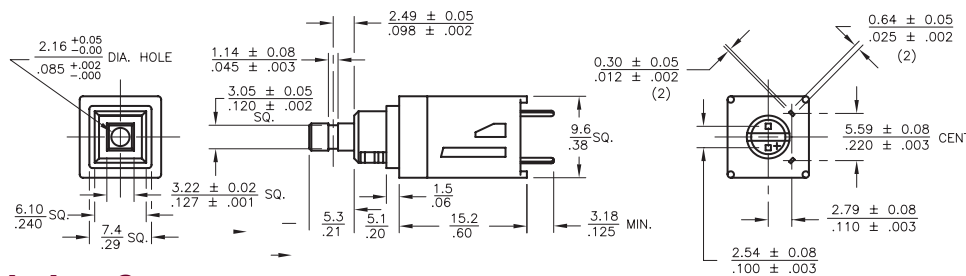
#### STANDARDS / AGENCY / RATINGS:



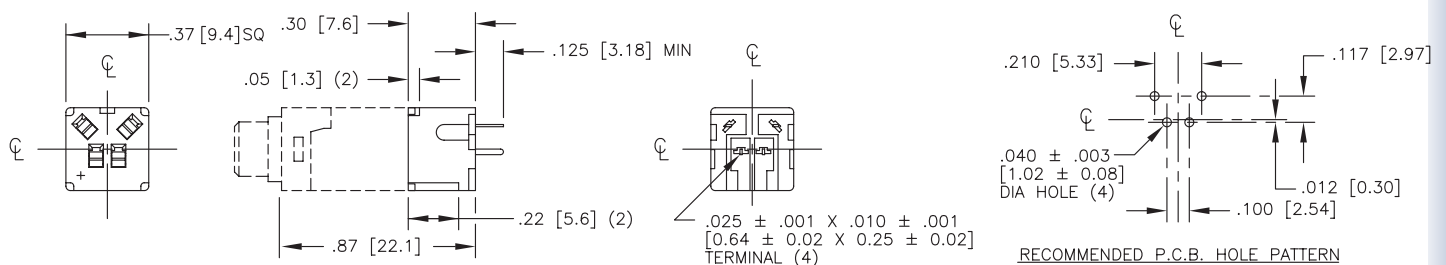
**STANDARD BUTTON STYLE**



**KEYCAP BUTTON STYLE**

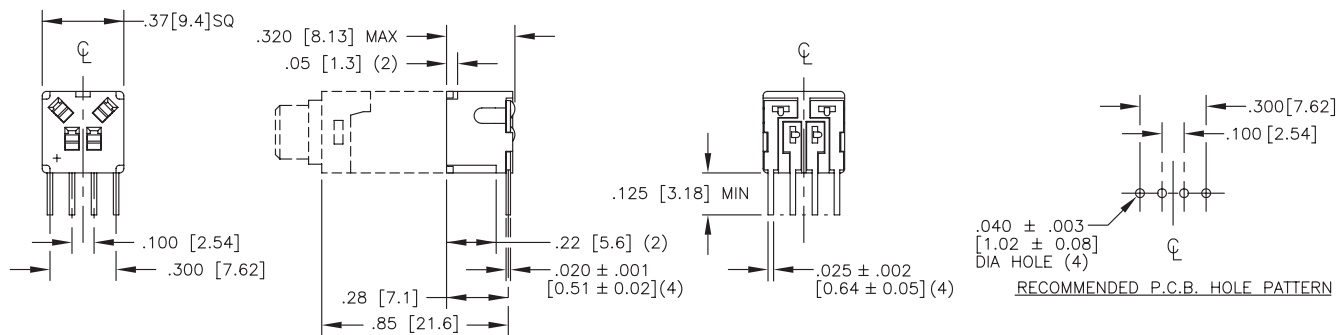


**IN-LINE CONNECTOR**



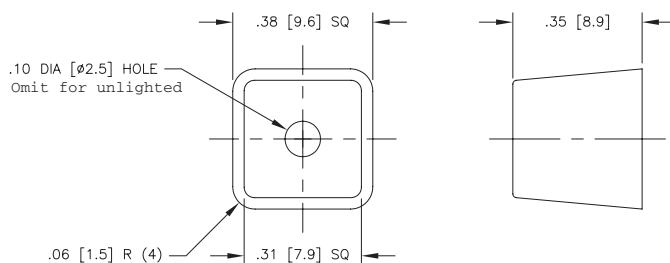
RECOMMENDED P.C.B. HOLE PATTERN

**RIGHT ANGLE CONNECTOR**

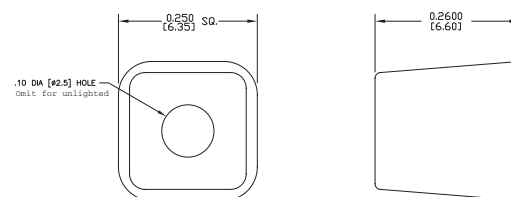


RECOMMENDED P.C.B. HOLE PATTERN

**LARGE LIGHTED & UNLIGHTED KEYCAP**



**SMALL LIGHTED & UNLIGHTED KEYCAP**



**MECHANICAL / ELECTRICAL CHARACTERISTICS:**

- Action:**  
SPST-NO-DB (Form X)
- Button travel:**  
3.05 mm (.120 in) nominal
- Operating Force:**  
113 grams nominal
- Contact Resistance:**  
Initial: 25 mΩ max.  
End of life: 50 mΩ max.
- Contact bounce:**  
Initial: 1 millisecond max.  
End of life 3 milliseconds max.
- Electrical life:**  
Momentary: 1 million cycles  
Maintained: 25,000 cycles
- Electrical rating:**  
.25A @ 30 VDC res.

## X-ON Electronics

Largest Supplier of Electrical and Electronic Components

*Click to view similar products for ITW Switches manufacturer:*

Other Similar products are found below :

[MP648-16\(50\)](#) [59-513](#) [SDBS25PN](#) [76-1024](#) [76-9410/439088G](#) [48M-111B](#) [48-1-RB-B-BK-B](#) [49-59311G](#) [181541B](#) [76-9440/439088N](#)  
[MDJ15](#) [DA15POLF](#) [DA15POL](#) [48M-111G](#) [SDA15P](#) [DC37PF](#) [DB25SNF](#) [DB25SF](#) [SDA15POL](#) [CF2050](#) [65-301000](#) [40-4-10](#) [SDA15PTD](#)  
[76-9513/4044G](#) [76-9113/439088](#) [59-511](#) [49-59115](#) [H48M-213B/4044](#) [59-900091](#) [18-488051](#) [SDB25PNTD](#) [HDAX26SNT](#) [ES1020](#)  
[SDD50PTD](#) [57-112R](#) [76-9116/439088](#) [57M211G](#) [78-3000](#) [22-104](#) [40-2-10](#) [59-517](#) [48-1-RB-N-GR-B](#) [76-5910B](#) [59-412G](#) [4959111](#)  
[DE9SNF](#) [DAC15P](#) [H48M-112B/4044](#) [14-724](#) [76-9111/439088](#)