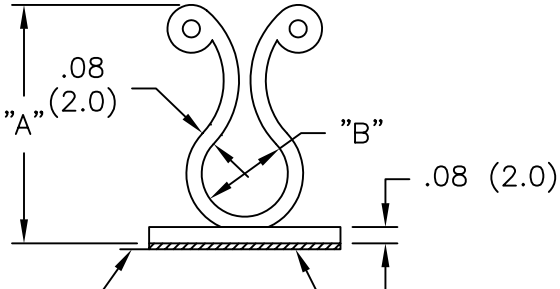
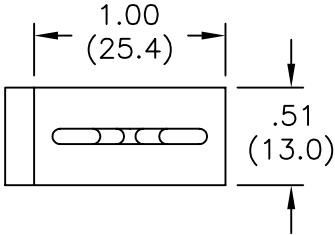


| PART NO. W/ADHESIVE | "A" REF. | "B" BUNDLE DIA. RANGE |
|------------------------|-------------|--------------------------|
| KLB-350A-RT | 1.07 (27.2) | .30-.40 (7.6-10.1) |
| KLB-450A-RT | 1.23 (31.2) | .40-.50 (10.1-12.7) |
| KLB-750A-RT | 1.58 (40.1) | .70-.80 (17.8-20.3) |



TYPICAL RELEASE
TAB LOCATION

1/32 (0.8) THICK,
DOUBLE SIDED
ADHESIVE TAPE

NOTES:

1. MATERIAL: NYLON 6/6 (RMS-01).
FLAME RETARDANT, NYLON (RMS-19),
AVAILABLE BY SPECIAL ORDER ONLY.
2. COLOR: NATURAL.
3. ACRYLIC ADHESIVE TAPE (RMS-15), WHITE LINER.
RUBBER ADHESIVE TAPE (RMS-102), BLUE LINER,
AVAILABLE BY SPECIAL ORDER ONLY.
TO ORDER USE KLB-XXXA1-RT.

| | | | | | | | |
|---|--|--|----------------------|--|------|---------------------|------------------|
| TITLE: KURLY-LOK ON BASE | | | DWG IN IN (MM) FINAL | | | | |
| TOLERANCES UNLESS NOTED .XX=±.010 .XXX=±.005 FRAC=±1/64 ANG=±1° | | | FILE # KLB | DWN: J.B. | APP: | PART # SEE TABLE | PRINT TYPE CA |
| C ADDED RUBBER ADHESIVE BY SPECIAL ORDER SM 05.17.02 | | | MAT'L: SEE NOTES | DT: 01-23-96 | DT: | | |
| B ADDED NOTE 3. SJ 03.05.02 | | | RE: RICHCO, INC. | RICHCO INC. PO BOX 804238, CHICAGO, 60680 (773) 539-4060 | | | |
| A CHANGED FILE NUMBER SM 05.31.01 | | | | | | | |
| REV DESCRIPTION ENGR DATE | | | | | | | |

X-ON Electronics

Largest Supplier of Electrical and Electronic Components

Click to view similar products for [ESSENTRA](#) manufacturer:

Other Similar products are found below :

[BPF-F1G12](#) [ASPS-8-125](#) [SOF-15127](#) [HTSN-M4-5-8-2](#) [SR 3075B](#) [SR 4120B](#) [DSC-2-48](#) [MCCG-2N](#) [OFBLT-3.1-05-PP](#) [BT-4-10-BL](#)
[HR6U-3/8](#) [DSC-3-48](#) [SHR-15-6V0B](#) [SR-4050B](#) [TNM3-6.5-12-1](#) [SNGS-2.5](#) [HR6P-3/8](#) [SNGS-2.5B](#) [DSC-1-48](#) [CAT-08-PP-BU](#) [VPH-1840](#)
[BMS-SA-48](#) [TNM3-6.5-20-2](#) [SR 3075W](#) [CRLCBSR-3-01](#) [SPGS-2.5](#) [SNGS-1](#) [NTS-20](#) [SR 2664B](#) [HR8P-1/2](#) [PGS-2](#) [HR3P-3/16](#) [HR4U-1/4](#)
[NTS-10](#) [KBP-19](#) [FRB-333](#) [TLM-1550](#) [VPH-2520](#) [HTSN-M2-15-5-1](#) [SRCC-1](#) [HTSN-M3-25-6-1](#) [SNGSG-2](#) [201-USS](#) [HTSN-M2-8-5-1](#)
[HTSN-M3-25-8-1](#) [TNM3-6.5-15-2](#) [TNM3-6.5-25-2](#) [SR 3090W](#) [LCBSBM-6-01A2-RT](#) [NSP-6-4-01](#)