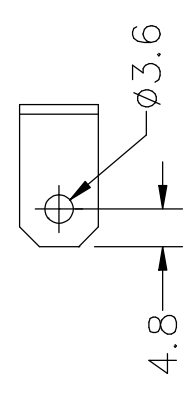
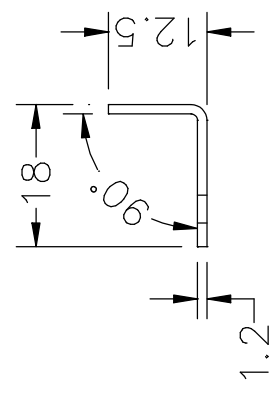
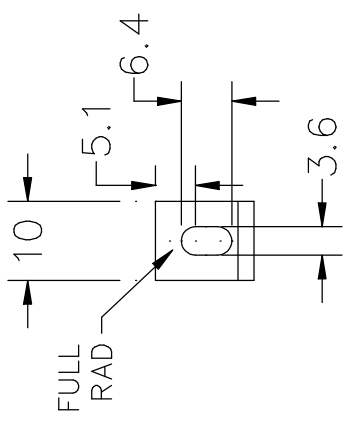


1	2	3	4	5	6	7	8
DRAWING NUMBER		THIRD ANGLE PROJECTION					
USED ON							
ISS.	DESCRIPTION	DRAWN DATE	CHK'D DATE	APP'D DATE			
A	INITIAL ISSUE	D. WARD	A. NEVE				
		08/06/08	08/06/01				



MATERIAL	FINISH	TOLERANCES UNLESS OTHERWISE STATED	CUSTOMER	DRAWING NUMBER		SHEET
30 B3001	COM	LINEAR	WORKS	22B30	8	11A
CR4 1.2 X 10MM		ANGULAR	TITLE			
		X.X ±0.5	BRACKLE			
		ALL DIMENSIONS IN MM				
		SCALE 1:1				

THIS DOCUMENT IS THE PROPERTY OF PENN FABRICATION AND SHALL NOT BE REPRODUCED OR TRANSMITTED IN ANY FORM OR BY ANY MEANS, ELECTRONIC OR MECHANICAL, INCLUDING PHOTOCOPYING, RECORDING, OR BY ANY INFORMATION STORAGE AND RETRIEVAL SYSTEM, WITHOUT THE WRITTEN PERMISSION OF PENN FABRICATION LTD.

Penn fabrication

X-ON Electronics

Largest Supplier of Electrical and Electronic Components

Click to view similar products for [Penn Elcom](#) manufacturer:

Other Similar products are found below :

[RWB-1032-12UK](#) [RWB-1032-16UK](#) [H1008-BLK](#) [L905/927Z](#) [3232LK](#) [R6418-1032](#) [M154306](#) [5295](#) [G08](#) [G12](#) [3234LK](#) [R2100/2UK](#) [OR-4A6637](#) [M1552](#) [W9000-V6](#) [R0828/12](#) [R0828/16](#) [H1053Z](#) [H1024](#) [R8500-12](#) [D0604K](#) [R0828/18](#) [3233LK](#) [R0828/06](#) [8700/FANCORD](#)
[R0821](#) [R1206/2U](#) [R0828/10](#) [F1554](#) [M1530](#) [R1194/2UK](#) [G10](#) [R1290/1U](#) [H0494](#) [G0780 KIT](#) [M1500](#) [9106](#) [F1694](#) [R0828/14](#) [9112](#)
[S1032/HP100](#) [G15](#) [M1701](#) [M1504](#) [EX-6301B](#) [R1206/1U](#) [H1053K](#) [C1824K](#) [R0828/21](#) [R0828/08](#)