



SiC SCHOTTKY DIODE TYPE 2×200A

Preliminary

Features

- High surge current capable
- Zero reverse recovery current
- High bandwidth
- Temperature Independent Switching Behavior
- VDC 600 V
- I_F ($T_C < 135^\circ\text{C}$) 2×200 A

Benefits

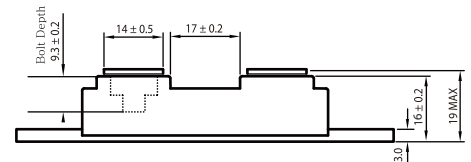
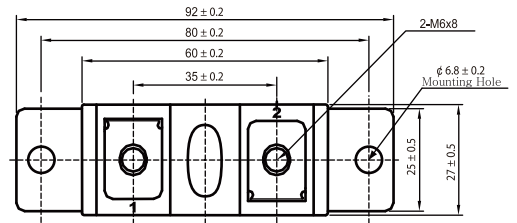
- Unipolar rectifier
- Zero switching loss
- Higher efficiency
- Smaller heat sink
- Parallel devices without thermal runaway

Applications

- Motor drives
- Switch mode power supplies
- Ev chargers
- Solar inverters
- Welding equipment
- Power factor correction
- Diode snubber
- Automotive
- induction heating



Dimensions in mm (1 mm = 0.0394")



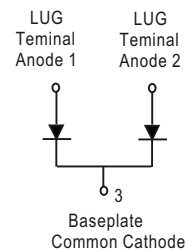
Maximum Ratings

Operating Junction Temperature : - 55 °C to +175 °C

Storage Temperature : -55 °C to +175 °C

Part Number	Maximum Recurrent Peak Reverse Voltage	Maximum DC Blocking Voltage
DACSB40060CT	600V	600V

Maximum Rating	Symbol	Conditions	Value	Unit
Continuous forward current (per leg)	I_F	$T_C = 135^\circ\text{C}$	200	A
Surge non-repetitive forward current sine halfwave (per leg)	I_{FSM}	$T_C = 25^\circ\text{C}$, $t_p = 8.3\text{ ms}$	1400	
		$T_C = 150^\circ\text{C}$, $t_p = 8.3\text{ ms}$	875	
Non-repetitive peak forward current (per leg)	$I_{F,max}$	$T_C = 25^\circ\text{C}$, $t_p = 10\ \mu\text{s}$	5600	
		$T_C = 150^\circ\text{C}$, $t_p = 10\ \mu\text{s}$	3500	
Repetitive peak reverse voltage	V_{RRM}	$T_J = 25^\circ\text{C}$	600	V
Mounting torque		M6 Screw	3~4.7	N-m



**Electrical Characteristics**, at $T_j=25\text{ }^\circ\text{C}$, unless otherwise specified. (per leg)

Static Characteristics	Symbol	Conditions	Values			Unit
			min.	typ.	max.	
DC blocking voltage	V_{DC}		600	-	-	V
Diode forward voltage	V_F	$I_F=200\text{A}$, $T_j=25\text{ }^\circ\text{C}$	-	1.45	1.65	
		$I_F=200\text{A}$, $T_j=175\text{ }^\circ\text{C}$	-	1.70	2.00	
Reverse current	I_R	$V_R=600\text{V}$, $T_j=25\text{ }^\circ\text{C}$	-	30	200	μA
		$V_R=600\text{V}$, $T_j=175\text{ }^\circ\text{C}$	-	200	1,000	

AC Characteristics (per leg)

Static Characteristics	Symbol	Conditions	Values			Unit
			min.	typ.	max.	
Total capacitive charge	Q_{rr}	$V_R=400\text{V}$, $T_j=25\text{ }^\circ\text{C}$	-	698	-	nC
Total capacitance	C	$V_R=0\text{V}$, $f=1\text{ MHz}$ $T_j=25\text{ }^\circ\text{C}$	-	12,580	-	pF
		$V_R=200\text{V}$, $f=1\text{ MHz}$ $T_j=25\text{ }^\circ\text{C}$	-	1,250	-	
		$V_R=400\text{V}$, $f=1\text{ MHz}$ $T_j=25\text{ }^\circ\text{C}$	-	1,170	-	

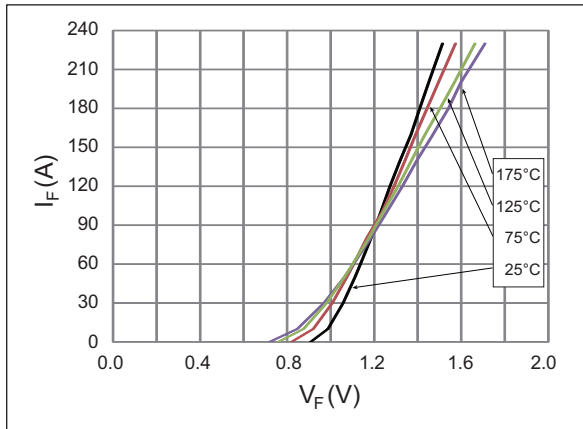
Thermal Characteristics (per leg)

Static Characteristics	Symbol	Values	Unit
		typ.	
Thermal resistance from junction to case	$R_{\theta JC}$	0.07	$^\circ\text{C/W}$

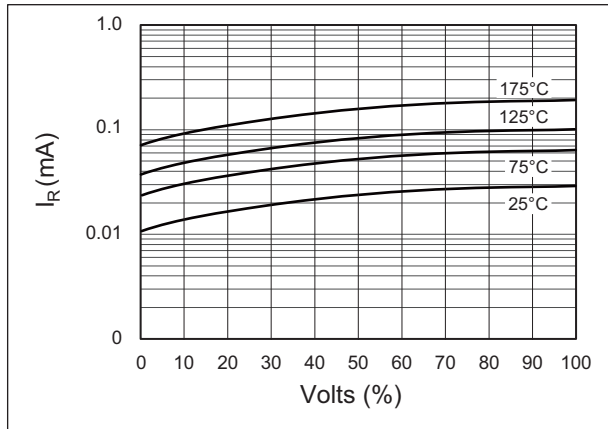


Typical Performance

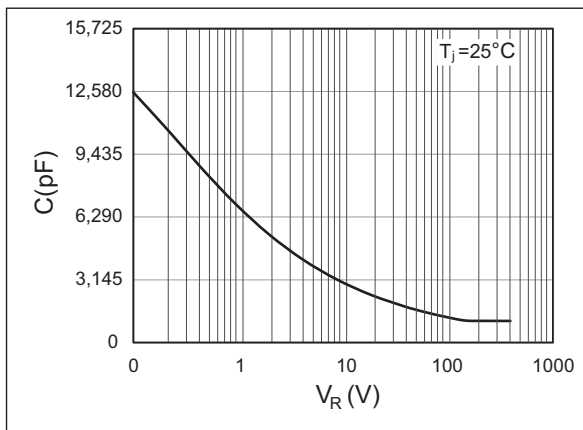
Forward Characteristics (parameterized on T_j)



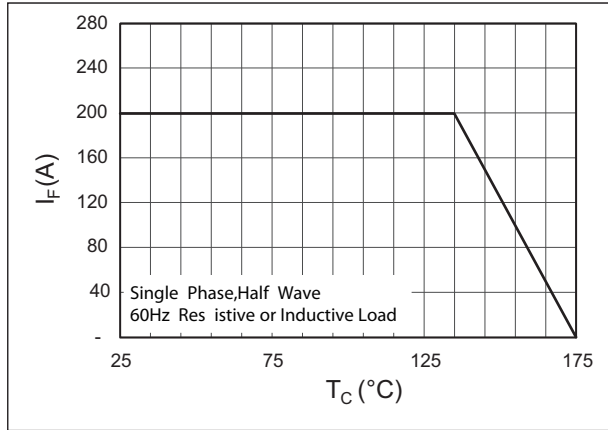
Reverse Characteristics (parameterized on T_j)



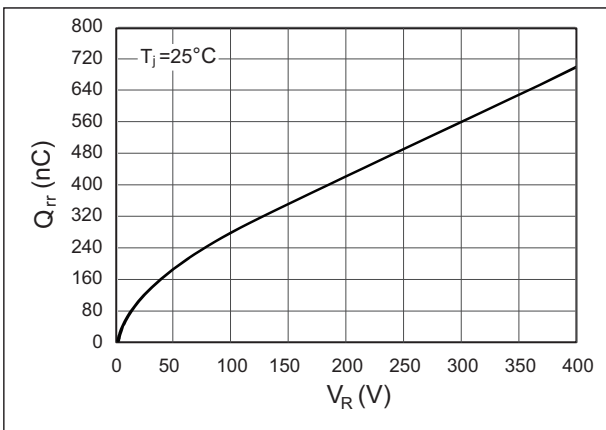
Capacitance



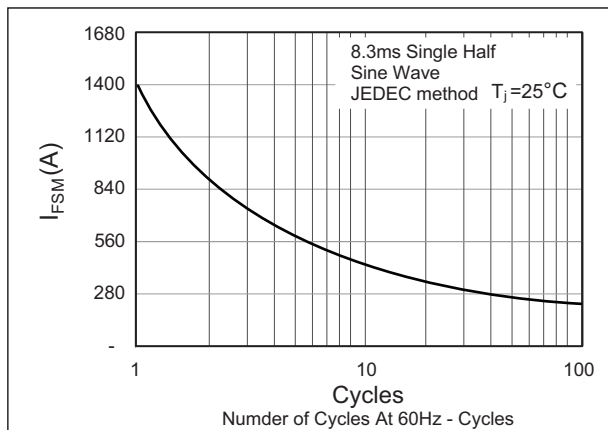
Current Derating



Recovery Charge



Forward Surge Current



X-ON Electronics

Largest Supplier of Electrical and Electronic Components

Click to view similar products for [Schottky Diodes & Rectifiers](#) category:

Click to view products by [DACO SEMICONDUCTOR](#) manufacturer:

Other Similar products are found below :

[CUS06\(Te85L,Q,M\)](#) [MA4E2508M-1112](#) [D1FH3-5063](#) [MBR0530L-TP](#) [MBR10100CT-BP](#) [MBR30H100MFST1G](#) [MMBD301M3T5G](#)
[PMAD1103-LF](#) [PMAD1108-LF](#) [RB160M-50TR](#) [RB520S-30](#) [RB551V-30](#) [D83C](#) [DD350N18K](#) [DZ435N40K](#) [DZ600N16K](#)
[BAS16E6433HTMA1](#) [BAS 3010S-02LRH E6327](#) [BAT 15-099R E6327](#) [BAT 54-02LRH E6327](#) [NRVBAF360T3G](#) [NRVTS10100MFST1G](#)
[NRVTS12100EMFST1G](#) [NSR05F40QNXT5G](#) [NSVR05F40NXT5G](#) [JANS1N6640](#) [SB07-03C-TB-H](#) [SB1003M3-TL-W](#) [SBAT54CWT1G](#)
[SK32A-LTP](#) [SK33A-TP](#) [SK34A-TP](#) [SK34B-TP](#) [SMD1200PL-TP](#) [ACDBN160-HF](#) [SS3003CH-TL-E](#) [STPS3045CPIRG](#) [STPS30S45CW](#)
[PDS3100Q-7](#) [GA01SHT18](#) [CRS10I30A\(Te85L,QM\)](#) [CRS10I30B\(Te85L,QM\)](#) [MBR1240MFST1G](#) [MBR20100CT-BP](#) [MBRB30H30CT-1G](#)
[BAS28E6433HTMA1](#) [BAS 70-02L E6327](#) [BYS11-90-E3TR3](#) [JANTX1N5712-1](#) [VS-STPS40L45CW-N3](#)