



SiC SCHOTTKY DIODE TYPE 2×400A

Preliminary

Features

- High surge current capable
- Zero reverse recovery current
- High bandwidth
- Temperature Independent Switching Behavior
- VDC 600 V
- $I_F$  ( $T_C < 135^\circ\text{C}$ ) 2×400 A

Benefits

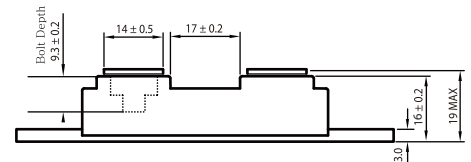
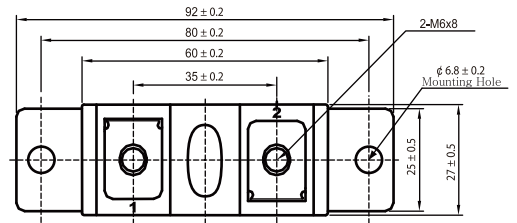
- Unipolar rectifier
- Zero switching loss
- Higher efficiency
- Smaller heat sink
- Parallel devices without thermal runaway

Applications

- Motor drives
- Switch mode power supplies
- Ev chargers
- Solar inverters
- Welding equipment
- Power factor correction
- Diode snubber
- Automotive
- induction heating



Dimensions in mm (1 mm = 0.0394")



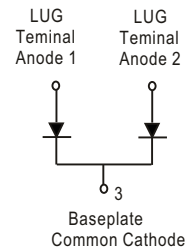
Maximum Ratings

Operating Junction Temperature : - 55 °C to +175 °C

Storage Temperature : -55 °C to +175 °C

Part Number	Maximum Recurrent Peak Reverse Voltage	Maximum DC Blocking Voltage
DACSB80060CT	600V	600V

Maximum Rating	Symbol	Conditions	Value	Unit
Continuous forward current (per leg)	$I_F$	$T_C = 135^\circ\text{C}$	400	A
Surge non-repetitive forward current sine halfwave (per leg)	$I_{FSM}$	$T_C = 25^\circ\text{C}$ , $t_p = 8.3\text{ ms}$	2400	
		$T_C = 150^\circ\text{C}$ , $t_p = 8.3\text{ ms}$	1500	
Non-repetitive peak forward current (per leg)	$I_{F,max}$	$T_C = 25^\circ\text{C}$ , $t_p = 10\ \mu\text{s}$	9600	
		$T_C = 150^\circ\text{C}$ , $t_p = 10\ \mu\text{s}$	6000	
Repetitive peak reverse voltage	$V_{RRM}$	$T_j = 25^\circ\text{C}$	600	V
Mounting torque		M6 Screw	3~4.7	N-m





**Electrical Characteristics**, at  $T_j=25\text{ }^\circ\text{C}$ , unless otherwise specified. (per leg)

Static Characteristics	Symbol	Conditions	Values			Unit
			min.	typ.	max.	
DC blocking voltage	$V_{DC}$		600	-	-	V
Diode forward voltage	$V_F$	$I_F=200\text{A}, T_j=25\text{ }^\circ\text{C}$	-	1.45	1.65	
		$I_F=200\text{A}, T_j=175\text{ }^\circ\text{C}$	-	1.70	2.00	
Reverse current	$I_R$	$V_R=600\text{V}, T_j=25\text{ }^\circ\text{C}$	-	45	250	$\mu\text{A}$
		$V_R=600\text{V}, T_j=175\text{ }^\circ\text{C}$	-	250	1,000	

**AC Characteristics** (per leg)

Static Characteristics	Symbol	Conditions	Values			Unit
			min.	typ.	max.	
Total capacitive charge	$Q_{rr}$	$V_R=400\text{V}, T_j=25\text{ }^\circ\text{C}$	-	1,186	-	nC
Total capacitance	C	$V_R=0\text{V}, f=1\text{ MHz}$ $T_j=25\text{ }^\circ\text{C}$	-	21,360	-	pF
		$V_R=200\text{V}, f=1\text{ MHz}$ $T_j=25\text{ }^\circ\text{C}$	-	2,123	-	
		$V_R=400\text{V}, f=1\text{ MHz}$ $T_j=25\text{ }^\circ\text{C}$	-	1,986	-	

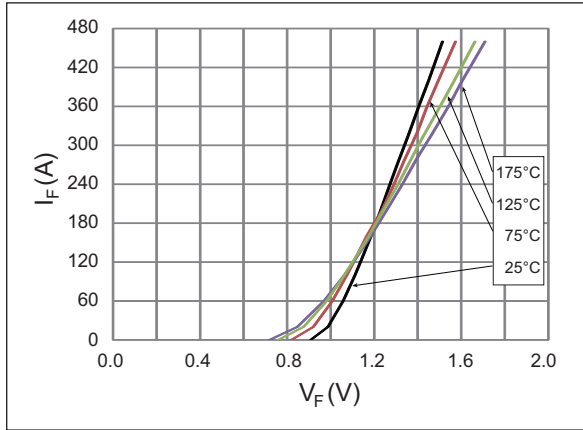
**Thermal Characteristics** (per leg)

Static Characteristics	Symbol	Values	Unit
		typ.	
Thermal resistance from junction to case	$R_{\theta JC}$	0.023	$^\circ\text{C/W}$

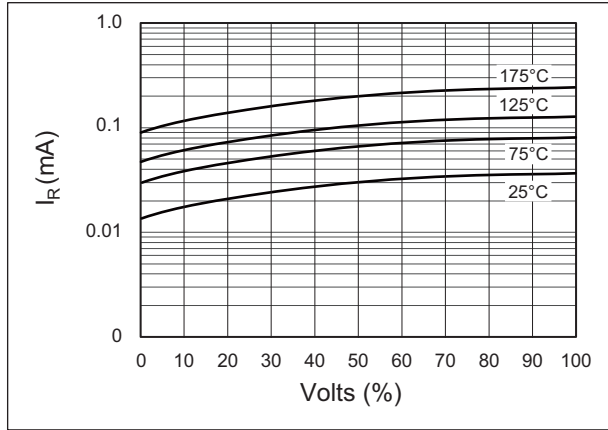


Typical Performance

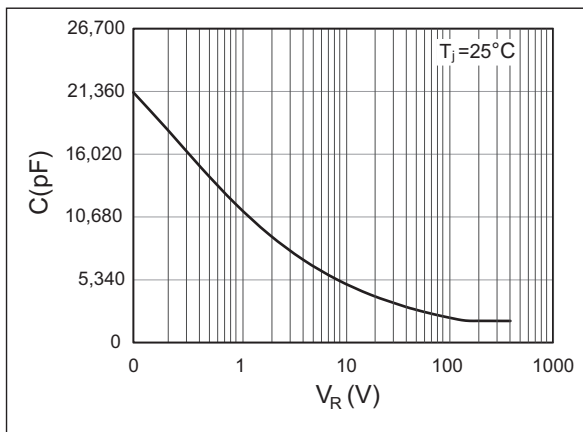
Forward Characteristics (parameterized on  $T_j$ )



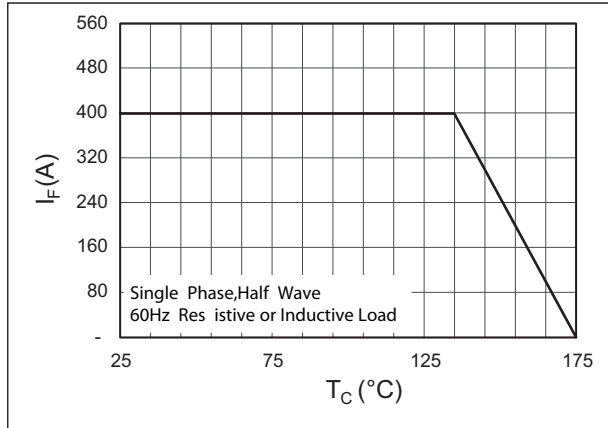
Reverse Characteristics (parameterized on  $T_j$ )



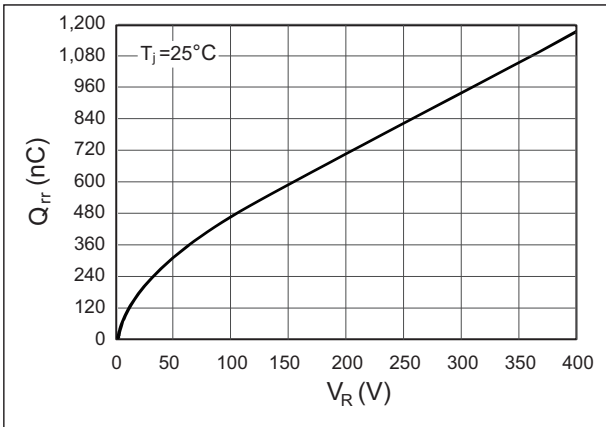
Capacitance



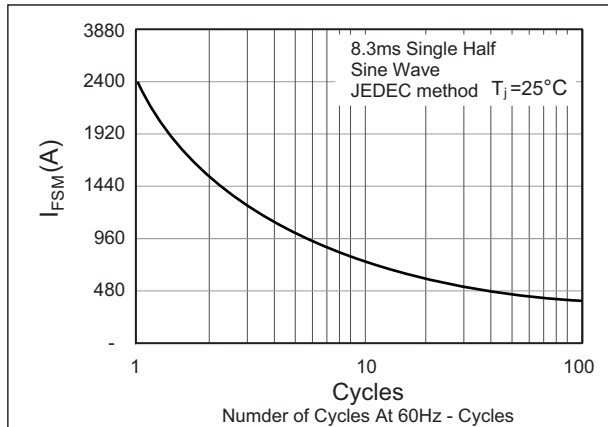
Current Derating



Recovery Charge



Forward Surge Current



## X-ON Electronics

Largest Supplier of Electrical and Electronic Components

*Click to view similar products for [Schottky Diodes & Rectifiers](#) category:*

*Click to view products by [DACO SEMICONDUCTOR](#) manufacturer:*

Other Similar products are found below :

[CUS06\(Te85L,Q,M\)](#) [MA4E2508M-1112](#) [D1FH3-5063](#) [MBR0530L-TP](#) [MBR10100CT-BP](#) [MBR30H100MFST1G](#) [MMBD301M3T5G](#)  
[PMAD1103-LF](#) [PMAD1108-LF](#) [RB160M-50TR](#) [RB520S-30](#) [RB551V-30](#) [D83C](#) [DD350N18K](#) [DZ435N40K](#) [DZ600N16K](#)  
[BAS16E6433HTMA1](#) [BAS 3010S-02LRH E6327](#) [BAT 15-099R E6327](#) [BAT 54-02LRH E6327](#) [NRVBAF360T3G](#) [NRVTS10100MFST1G](#)  
[NRVTS12100EMFST1G](#) [NSR05F40QNXT5G](#) [NSVR05F40NXT5G](#) [JANS1N6640](#) [SB07-03C-TB-H](#) [SB1003M3-TL-W](#) [SBAT54CWT1G](#)  
[SK32A-LTP](#) [SK33A-TP](#) [SK34A-TP](#) [SK34B-TP](#) [SMD1200PL-TP](#) [ACDBN160-HF](#) [SS3003CH-TL-E](#) [STPS3045CPIRG](#) [STPS30S45CW](#)  
[PDS3100Q-7](#) [GA01SHT18](#) [CRS10I30A\(Te85L,QM\)](#) [CRS10I30B\(Te85L,QM\)](#) [MBR1240MFST1G](#) [MBR20100CT-BP](#) [MBRB30H30CT-1G](#)  
[BAS28E6433HTMA1](#) [BAS 70-02L E6327](#) [BYS11-90-E3TR3](#) [JANTX1N5712-1](#) [VS-STPS40L45CW-N3](#)