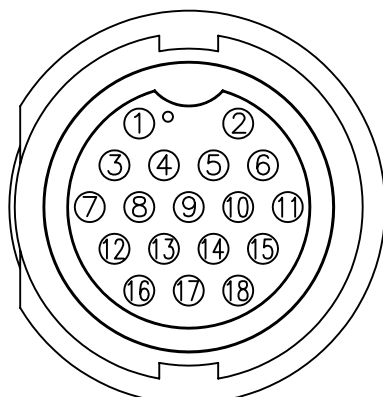
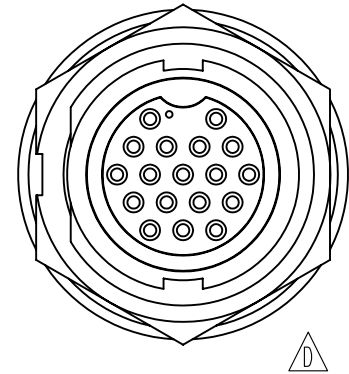
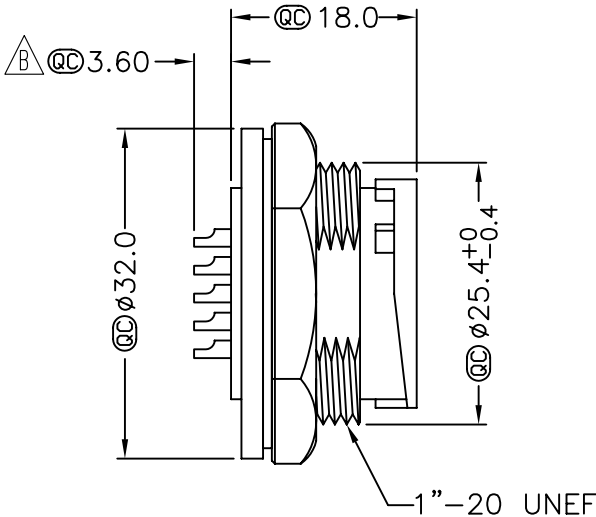
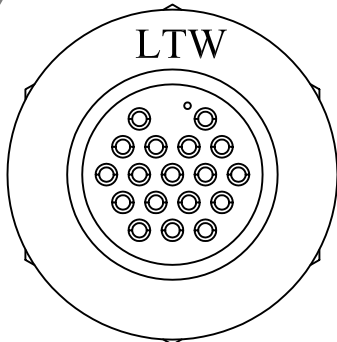


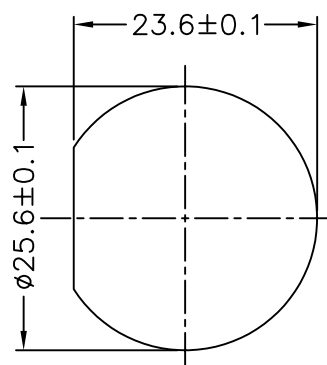
REV.	ECN NO.	DATE	SIGN	DESCRIPTION
B	LEN-770180	2007/07/02	Zeus	Change Panel Thickness Max
C		2008/05/15	Gao Ling	Change dimension
D	LE3-8B0110	2008/11/07	TOMMY	Change To Pin Hole

LTW  
CONFIDENTIAL  
2008.11.07  
R&D DEPT.

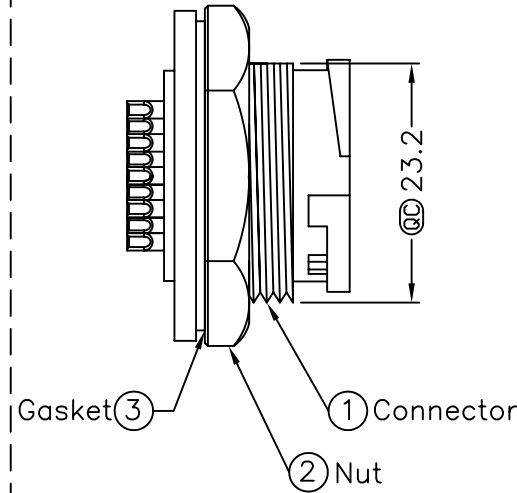
LTW  
DCC. DEPT.  
CONFIDENTIAL  
2008.11.27  
ISSUED



Pin Assignments  
Front View



Recommended  
Panel Cut-Out



Note:

- \* @C Important Dimension.
- \* Waterproof Rate: IP67
- \* Connector: Black, Nylon+GF
- \* Female Pin: Copper Alloy, Gold Plated
- \* Gasket: Black, EPDM
- \* Nut: Black, Nylon+GF
- △ B \* Use with waterproof cap or dust cap  
For Panel Thickness Max: 3.0mm
- △ B \* Use without waterproof cap or dust cap  
For Panel Thickness Max: 4.0mm

UNIT:mm	
TOLERANCE	
.X	±0.25
.XX	±0.1
.XXX	±0.05
ANGLES	±1°

TITLE		Large	
Panel Lock 18Pin M Conn F Pin			
SCALE	Free	SHEET	1 OF 1
REV.	D	SIZE	A4
		QC : Inspection Item	

**LTW**  
亮泰企業股份有限公司

ITEM NO	LTWDD-18PMFS-LC7001
DWG NO	LTWDD-18PMFS-LC7001
CUSTOMER	

DRAWN BY	TOMMY
CHECKED BY	Ivan
APPROVED BY	Luke

DATE	2008/11/07
DATE	2008/11/07
DATE	2008/11/07

THIS DOCUMENT IS SUBJECT TO CHANGE WITHOUT NOTICE. IT IS CONFIDENTIAL AND A PROPERTY OF LTW. DISCLOSURE TO THIRD PARTY HAS TO BE AUTHORIZED BY LTW.

## X-ON Electronics

Largest Supplier of Electrical and Electronic Components

*Click to view similar products for [Unspecified Connectors](#) category:*

*Click to view products by [Amphenol](#) manufacturer:*

Other Similar products are found below :

[1-21107-1](#) [2-21053-5](#) [PSC-28-1](#) [38111](#) [403000A10M050](#) [1-1589688-1](#) [770690-4](#) [QUINT-PS/1AC/48DC/10](#) [99 9113 02 05](#) [CA06COM-PG14SE7S-SPL](#) [578302](#) [578286](#) [130623](#) [186316](#) [153253](#) [186328](#) [153322](#) [153354](#) [193951](#) [1713941](#) [HC-DD72-I-CT-F](#) [RC-5AS2000](#) [RC-5CS2000](#) [RC-Z2068](#) [VC-TR5/6M](#) [RAD-900-CONF-RF1](#) [RAD-CON-SMA-N-SS](#) [RAD-ISM-900-ANT-OMNI-0-6](#) [RAD-PIG-EF316-N-RSMA](#) [KST-POF](#) [RIF-0-RPT-12DC/21](#) [RIF-1-BPT/2X21](#) [RIF-1-RPT-LV-120AC/2X21AU](#) [PV-FT-C2F-HSG](#) [HC-EVO-B06-HHFS-2B-PL-BK](#) [99 0210 00 04](#) [801377](#) [803579](#) [710-00007](#) [125.038-8](#) [135.016](#) [136.1612](#) [137.014](#) [137.015](#) [137.016](#) [138.015](#) [138.016](#) [2000 1/8](#) [2902021](#)  
[259.02SB-25](#)