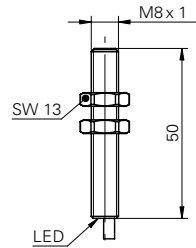


## INDUCTIVE PROXIMITY SENSOR

### dimension drawing



### general data

mounting type	shielded
nominal sensing distance $S_n$	2 mm
hysteresis	3 ... 20 % of $S_r$
output indicator	LED red

### electrical data

switching frequency	< 5 kHz
voltage supply range +Vs	10 ... 30 VDC
current consumption max.	12 mA
output circuit	PNP make function (NO)
voltage drop $V_d$	< 2 VDC
output current	< 200 mA
short circuit protection	yes
reverse polarity protection	yes

### mechanical data

type	cylindrical threaded
material (sensing face)	PBT
housing material	stainless steel
dimension	8 mm
housing length	50 mm
connection types	cable, 2 m

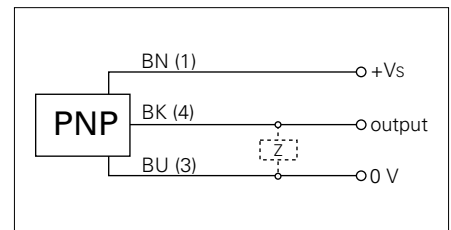
### ambient conditions

operating temperature	-25 ... +75 °C
protection class	IP 67

### photo



### connection diagram



- long robust steel housings

## X-ON Electronics

Largest Supplier of Electrical and Electronic Components

*Click to view similar products for [Veeder Root](#) manufacturer:*

Other Similar products are found below :

[0166726-006](#) [0195316-051](#) [0116425-007](#) [RFMT00R](#) [RFMV00](#) [RFXDC10](#) [RFXP10](#) [RFXS00](#) [RFXT00](#) [C342-0462](#) [C346-0422](#) [C628-20052](#)  
[C628-20300](#) [C628-40050](#) [C628-41002](#) [C628-41300](#) [C628-70002](#) [C628-81002](#) [C628-90000](#) [C628-91002](#) [S628-20300](#) [A103-A14](#) [RFMSK00](#)  
[RFMT00](#) [RFMV00R](#) [RFXD00](#) [RFXD10](#) [RFXS10](#) [C342-1562](#) [C342-3462](#) [C346-0513](#) [C628-20000](#) [C628-20002](#) [C628-21350](#) [C628-40000](#)  
[C628-40052](#) [C628-41302](#) [C628-51002](#) [C628-60002](#) [VC773-342](#) [0317680-001](#) [0703006-003](#) [0726845-001](#) [0727245-001](#) [0743425-003](#)  
[0743425-005](#) [0743797-001](#) [0744386-211](#) [0745815-001](#) [0779526-201](#)