

southco

SOUTHCO No. C5 SEALED LEVER LATCH

DATE	DRAWN	CHKD	SCALE
18JUN92	JGK		3/4

DRAWING NUMBER
J-C5-1

ASSEMBLY PART NUMBERS AND DESCRIPTION

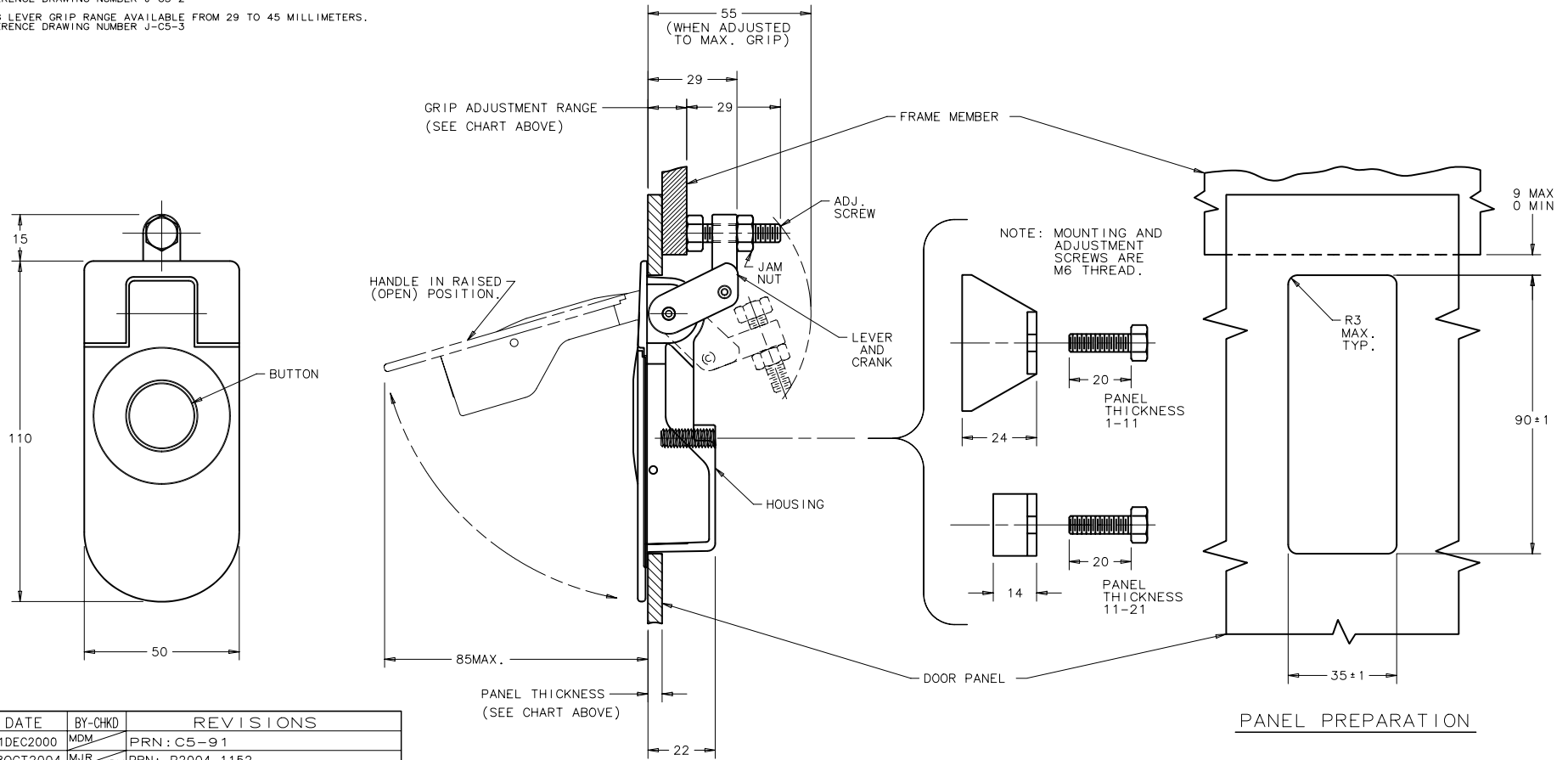
PANEL THICKNESS	SHORT LEVER* GRIP RANGE	BLACK ASSEMBLY WITH PLATED STEEL HARDWARE	BLACK ASSEMBLY WITH STAINLESS STEEL HARDWARE	SILVER ASSEMBLY WITH PLATED STEEL HARDWARE	SILVER ASSEMBLY WITH STAINLESS STEEL HARDWARE	CARDINAL WHITE ASSEMBLY WITH STEEL HARDWARE	CARDINAL WHITE ASSEMBLY WITH STAINLESS STEEL HARDWARE
1-11	1-14	C5-11-15	C5-11-16	C5-11-13	C5-11-14	C5-11-11	C5-11-12
11-21		C5-12-15	C5-12-16	C5-12-13	C5-12-14	C5-12-11	C5-12-12

*MEDIUM LEVER GRIP RANGE AVAILABLE FROM 14 TO 29 MILLIMETERS. REFERENCE DRAWING NUMBER J-C5-2
LONG LEVER GRIP RANGE AVAILABLE FROM 29 TO 45 MILLIMETERS. REFERENCE DRAWING NUMBER J-C5-3

MATERIAL AND FINISH

LATCH ASSEMBLY CONSISTS OF:
HOUSING; HANDLE AND BUTTON:
DIE CAST ZINC, SEE TABLE FOR FINISH.
LEVER AND CRANK: DIE CAST ZINC, COATED WITH CLEAR CHEMICAL PROTECTIVE FILM.
BLACK TORSION SPRING: 303 STAINLESS STEEL, PASSIVATED.
ROLL PINS: 420 STAINLESS STEEL, PASSIVATED.
O-RINGS: BUNA-N RUBBER, NATURAL.

HARDWARE CONSISTS OF:
MOUNTING BRACKET
MOUNTING SCREW
ADJUSTING SCREW
JAM NUT
1010 STEEL, ZINC PLATED WITH SEALED CHROMATE.
OR
300 SERIES STAINLESS STEEL, PASSIVATED.



REV.	DATE	BY-CHKD	REVISIONS
D	21DEC2000	MDM	PRN: C5-91
E	08OCT2004	MJR MDY	PRN: P2004-1152

THIRD ANGLE PROJECTION,
ALL DIMENSIONS ARE MILLIMETERS.

PROPRIETARY ITEM - EVERYONE WHO USES EXPRESSLY GRANTED IN WRITING
 INFORMATION DISCLOSED HEREON IS CONFIDENTIAL AND ALL RIGHTS RESERVED
 AND OTHERWISE ARE RESERVED BY SOUTHCO, INC.

FORMATB 2/88

X-ON Electronics

Largest Supplier of Electrical and Electronic Components

Click to view similar products for [Southco](#) manufacturer:

Other Similar products are found below :

[62-30-31](#) [E3-1010-105](#) [C2-33-45](#) [MF-02-210-60](#) [E3-13-4](#) [24-20-412-35](#) [SC-10-1000-10](#) [97-70-320-11](#) [01-13-25](#) [ST-10E-120SK-33](#) [E3-122-095](#) [ST-11A1-260SA-50](#) [R4-EM-21-161](#) [R4-50-42-101-10](#) [44-99-222-71](#) [E3-109-075](#) [EA-A01-001](#) [E3-127-0312](#) [E3-158-15](#) [E3-129-065](#) [E5-1-021-020](#) [57-40-702-85](#) [C5-41-25](#) [MA-01-220-02-20](#) [E3-15-11](#) [EM-05-11-001](#) [N2-2-300-01-20](#) [E3-106-145](#) [E3-56-62](#) [EA-KC2-101](#) [37-10-284-50](#) [MA-01-220-01-10](#) [E3-15-12](#) [EA-W52-506-80](#) [97-50-260-11](#) [82-15-280-20](#) [C5-41-45](#) [C2-32-101](#) [E5-2-015-040](#) [68-50-301-20](#) [CM-5-1S401-2TB](#) [MR-90-100-10](#) [E5-9004](#) [E3-38-25](#) [E5-9014](#) [E3-59-52](#) [R4-50-32-101-10](#) [44-99-222-72](#) [EM-05-21-101](#) [14-10-93-11](#)