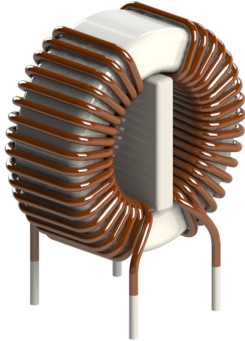


DTS-10 CURRENT COMPENSATED CHOKES

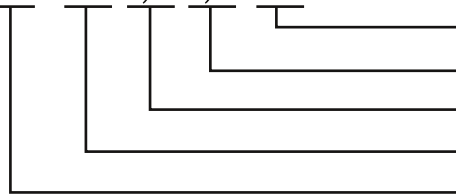


APPLICATIONS:

- Common-mode noise suppression on an AC power supply line and signal/data line

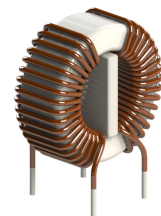
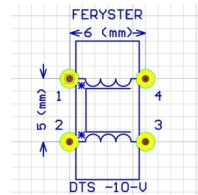
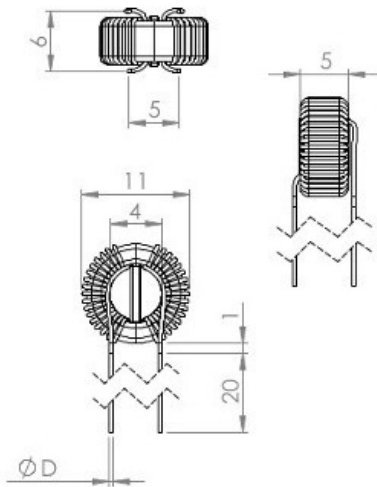
ORDERING CODE:

DTS -10 /4,7/0,25 -V

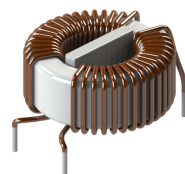
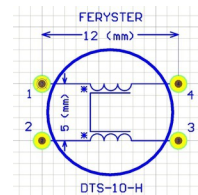
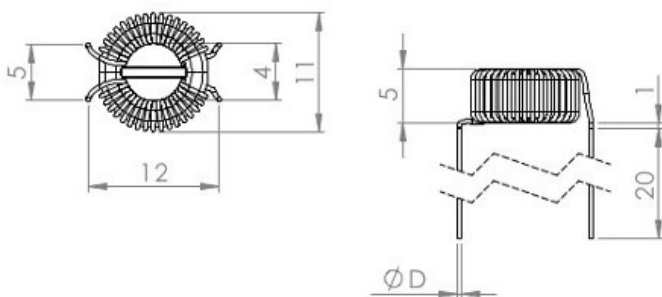


H - horizontal, V - vertical, CV - case vertical, CH - case horizontal, BV - base vertical
 rated current in Amps
 inductance in mH
 core size
 product symbol

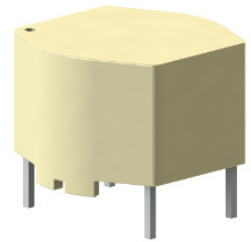
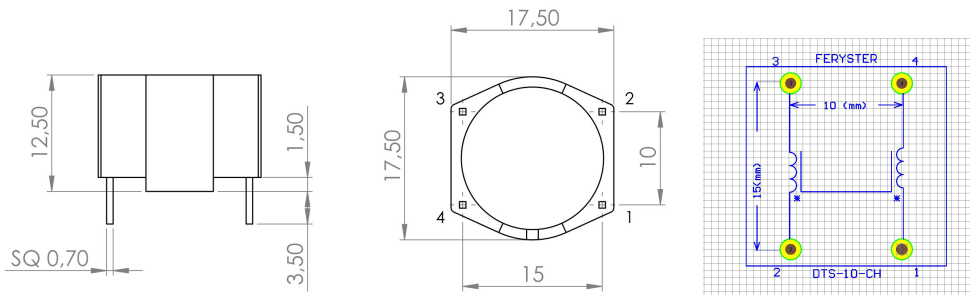
DIMENSIONS:



vertical version

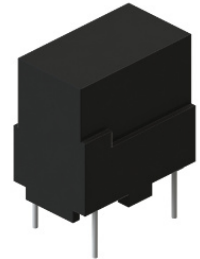
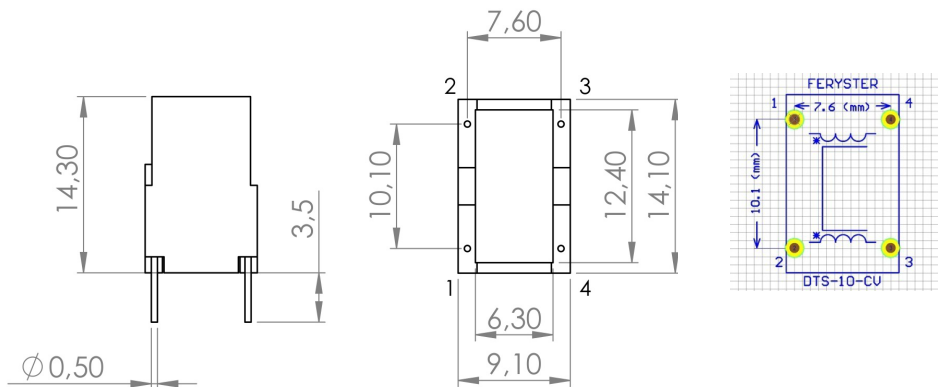


horizontal version



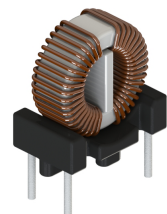
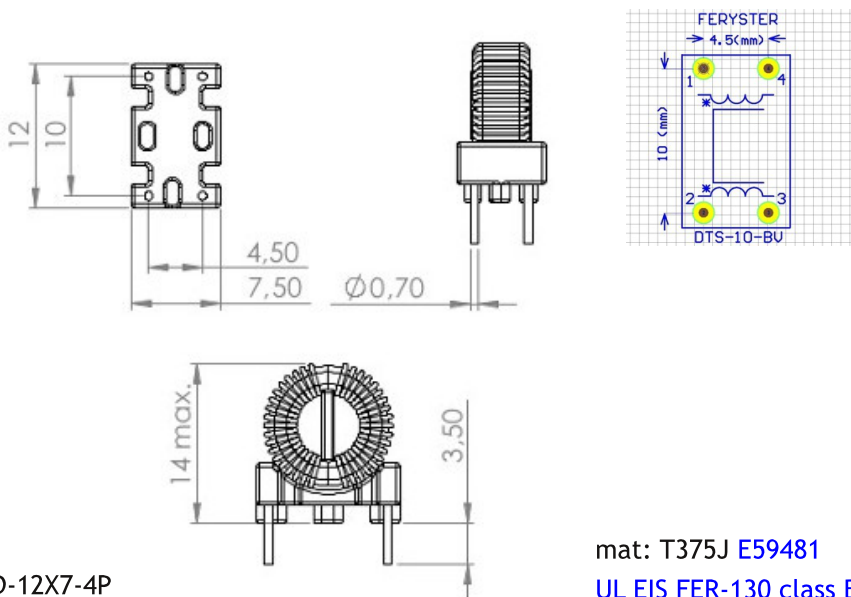
OBUD-H-15X12,5-YC
 mat: FR530 E41938
 UL EIS FER-155 class F - 155°C

CH version



OBUD-TOR-V-12,4X6,3-4P-YC
 mat: PM9820 E41429
 UL EIS FER-155 class F - 155°C

CV version

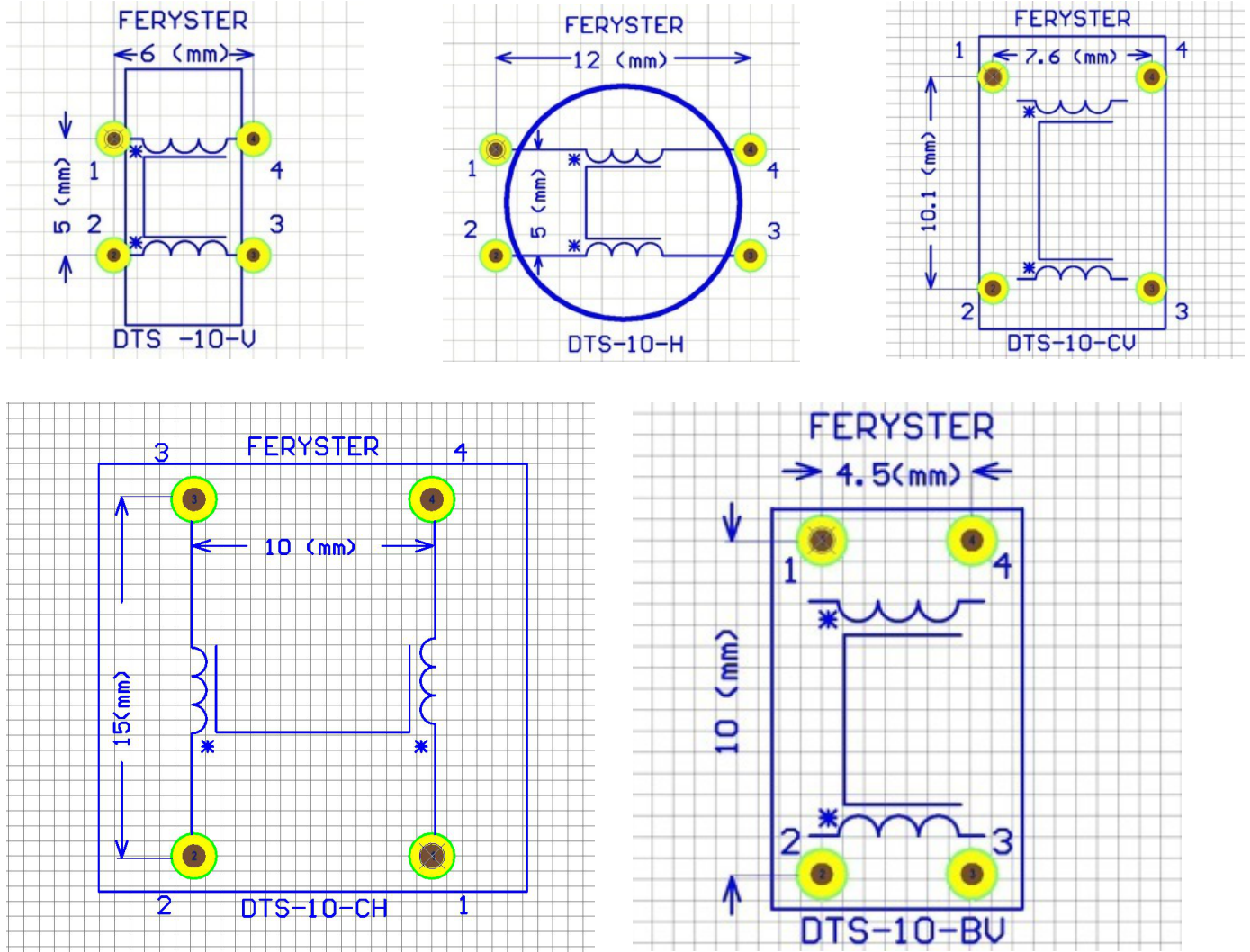


POD-12X7-4P

mat: T375J E59481
 UL EIS FER-130 class B - 130°C

BV version

FOOTPRINTS:

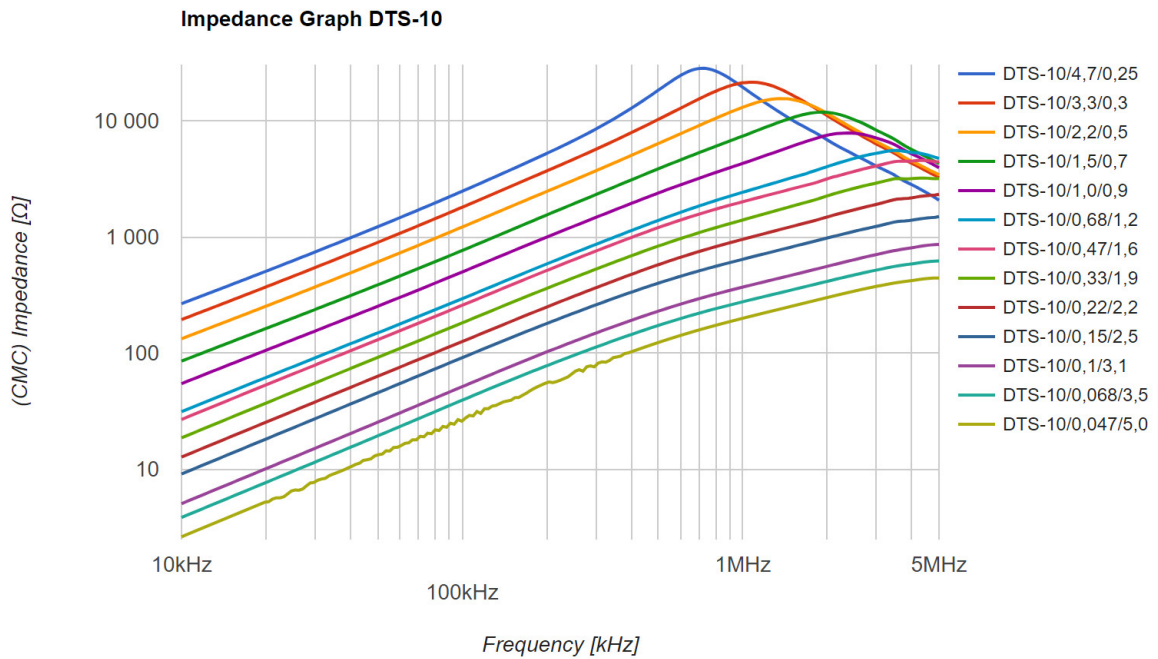


PROPERTIES:

Part number	L_{nom} [mH]	I_{nom} [A]	RDC [Ω]	Mounting version					\varnothing [mm]
				V	H	CV	CH	BV	
DTS-10/0,047/5,0	2x0,047	5,0	2x0,003	✓	✓	-	-	-	0,9
DTS-10/0,068/3,5	2x0,068	3,5	2x0,005	✓	✓	-	-	-	0,8
DTS-10/0,10/3,1	2x0,10	3,1	2x0,006	✓	✓	-	-	-	0,8
DTS-10/0,15/2,5	2x0,15	2,5	2x0,01	✓	✓	-	-	-	0,7
DTS-10/0,22/2,2	2x0,22	2,2	2x0,03	✓	✓	-	-	-	0,7
DTS-10/0,33/1,9	2x0,33	1,9	2x0,05	✓	✓	✓	✓	✓	0,6
DTS-10/0,47/1,6	2x0,47	1,6	2x0,08	✓	✓	✓	✓	✓	0,6
DTS-10/0,68/1,2	2x0,68	1,2	2x0,1	✓	✓	✓	✓	✓	0,5
DTS-10/1,0/0,9	2x1,0	0,9	2x0,15	✓	✓	✓	✓	✓	0,5
DTS-10/1,5/0,7	2x1,5	0,7	2x0,18	✓	✓	✓	✓	✓	0,4
DTS-10/2,2/0,5	2x2,2	0,5	2x0,24	✓	✓	✓	✓	✓	0,4
DTS-10/3,3/0,3	2x3,3	0,3	2x0,6	✓	✓	✓	✓	✓	0,3
DTS-10/4,7/0,25	2x4,7	0,25	2x0,9	✓	✓	✓	✓	✓	0,3

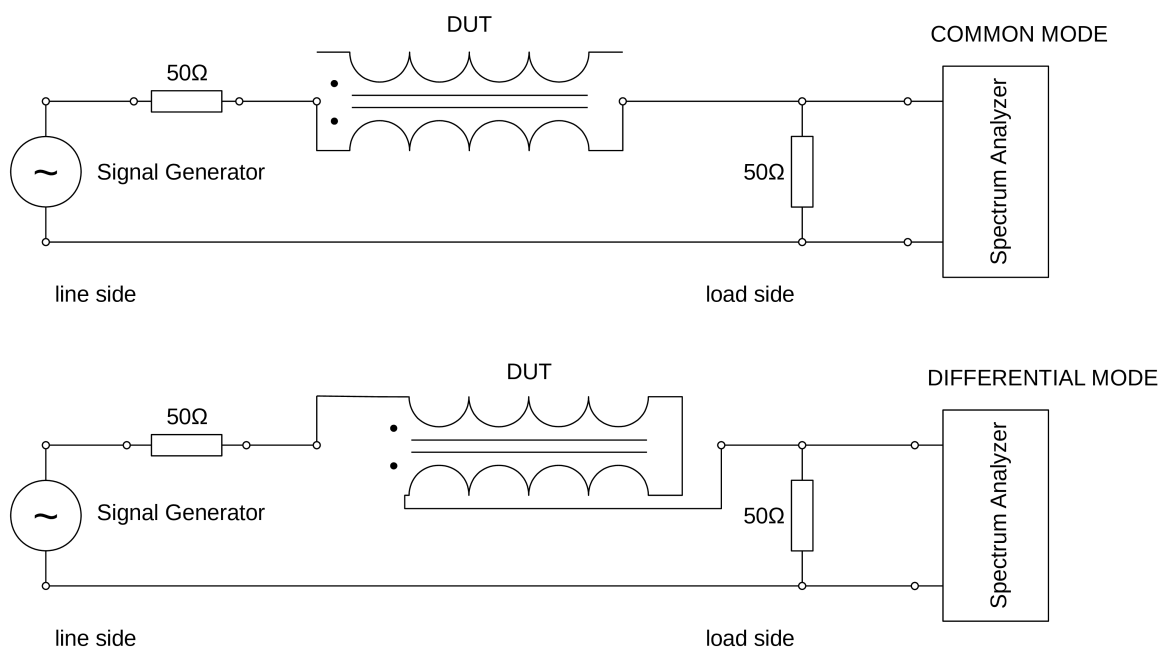
- Inductance tolerance: -20% +50%
- LCR meter f=10kHz
- Dielectric withstanding voltage 1500V
- RDC Cu wire resistance $\pm 20\%$

CHARACTERISTICS:

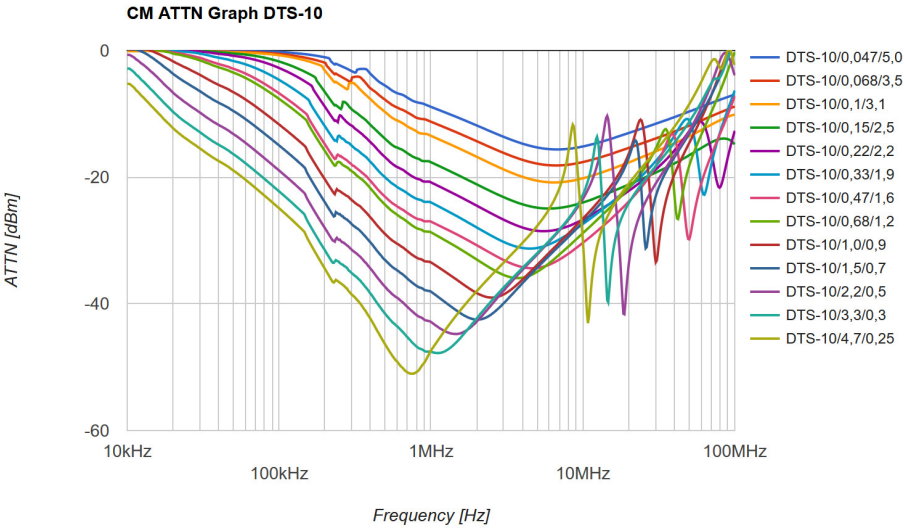


ATTENUATION MEASUREMENT METHOD:

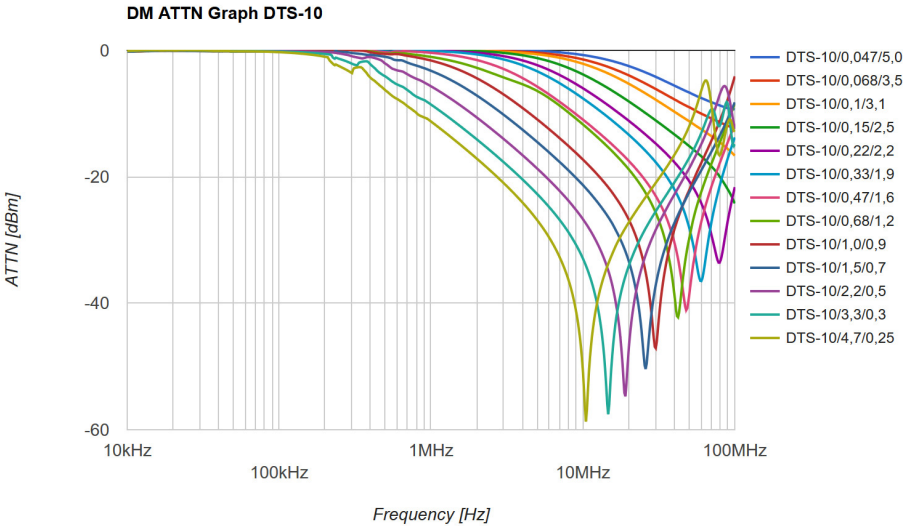
- Measured with RIGOL DSA815.



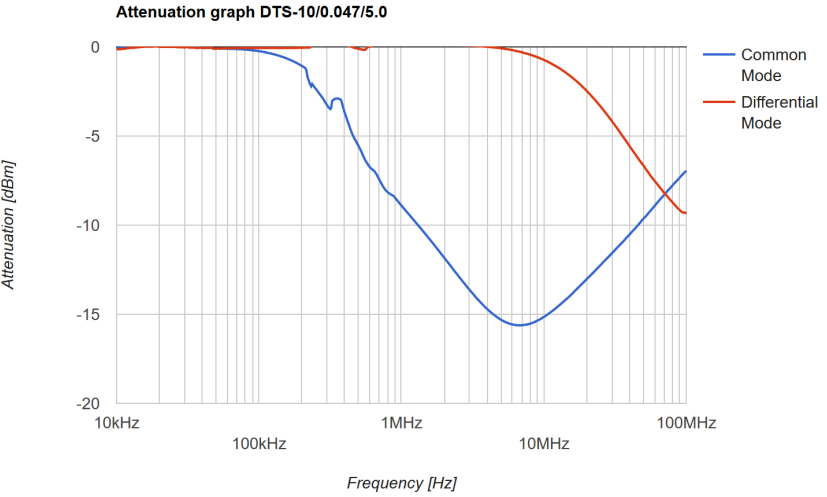
COMMON MODE ATTENUATION:

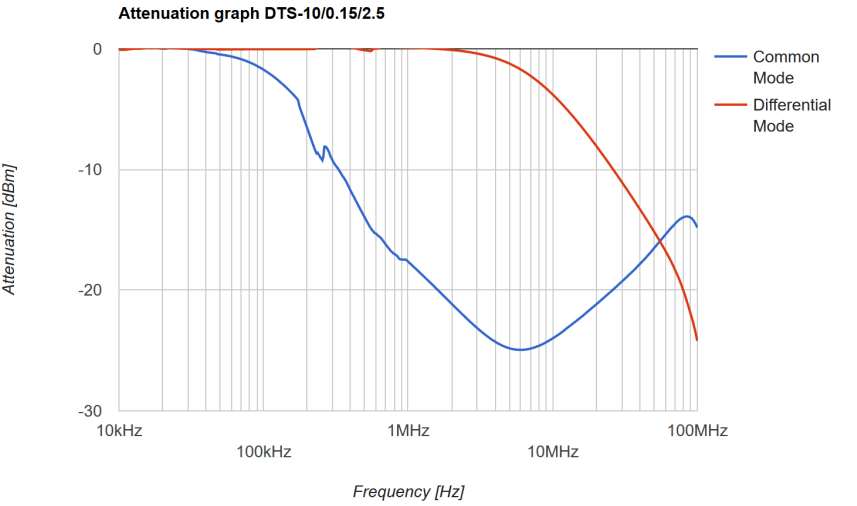
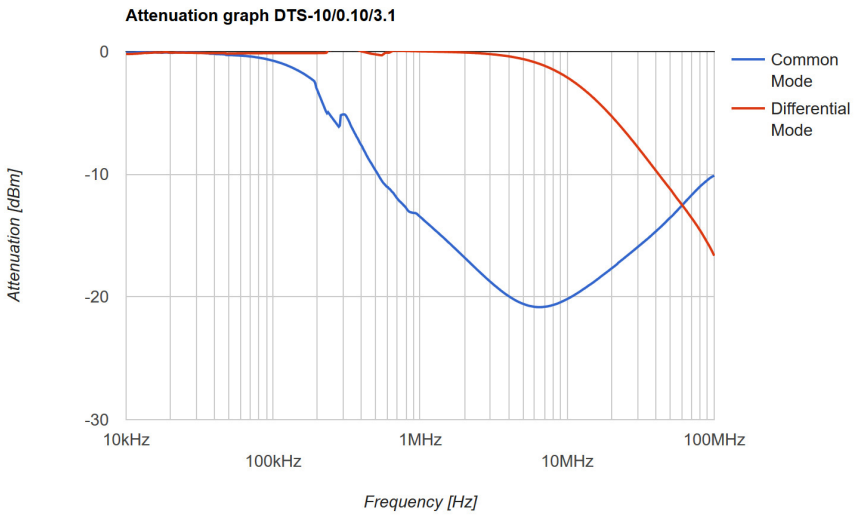
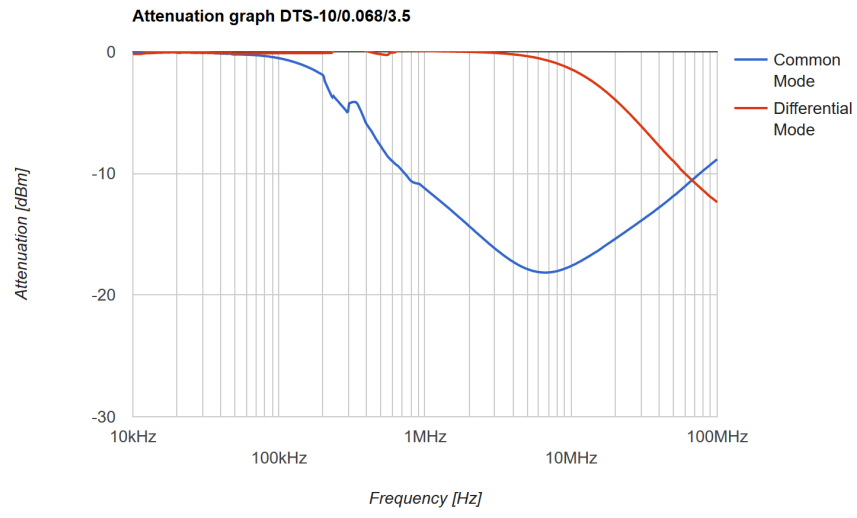


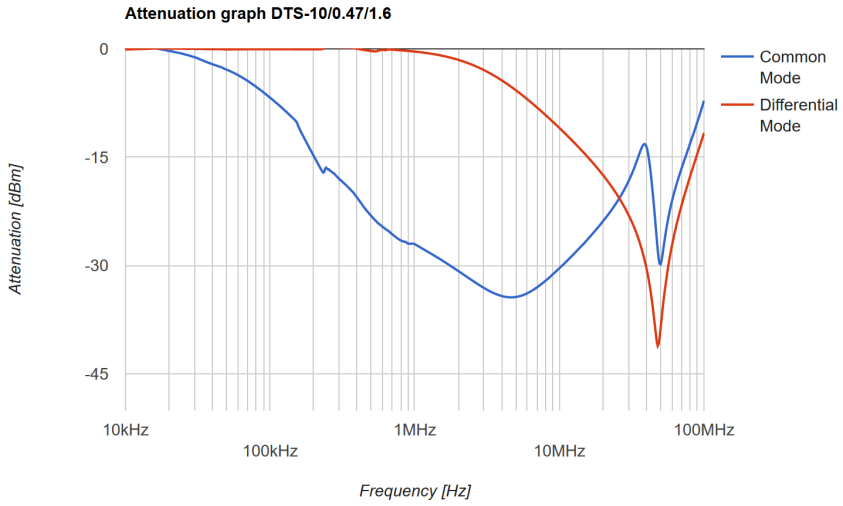
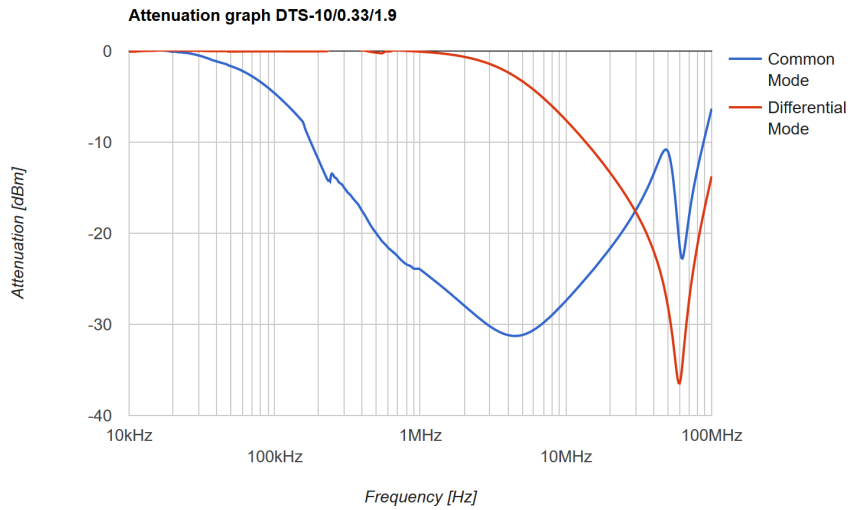
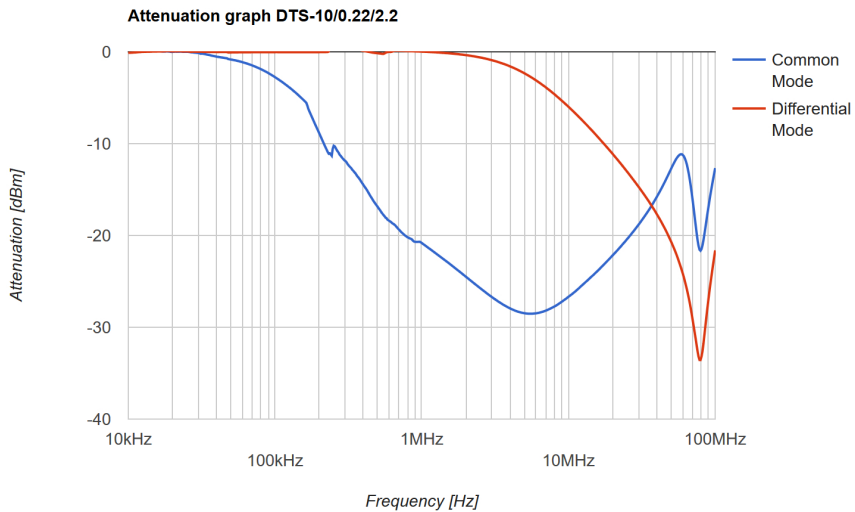
DIFFERENTIAL MODE ATTENUATION:

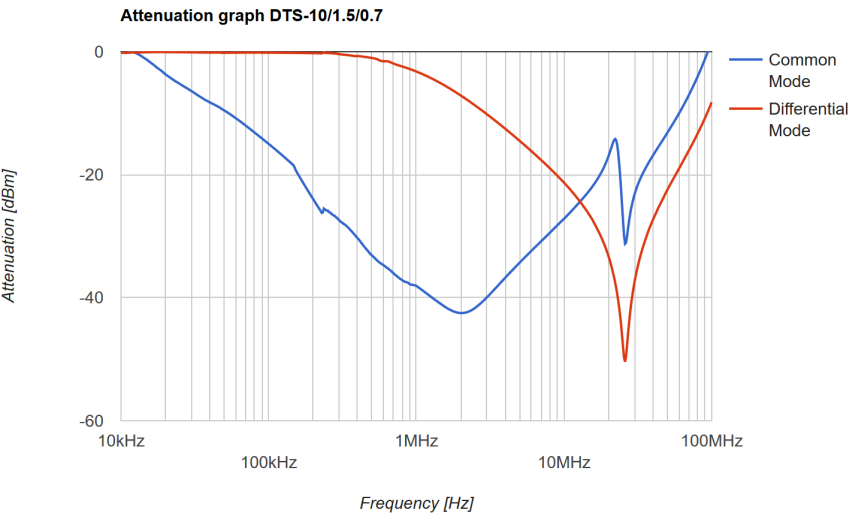
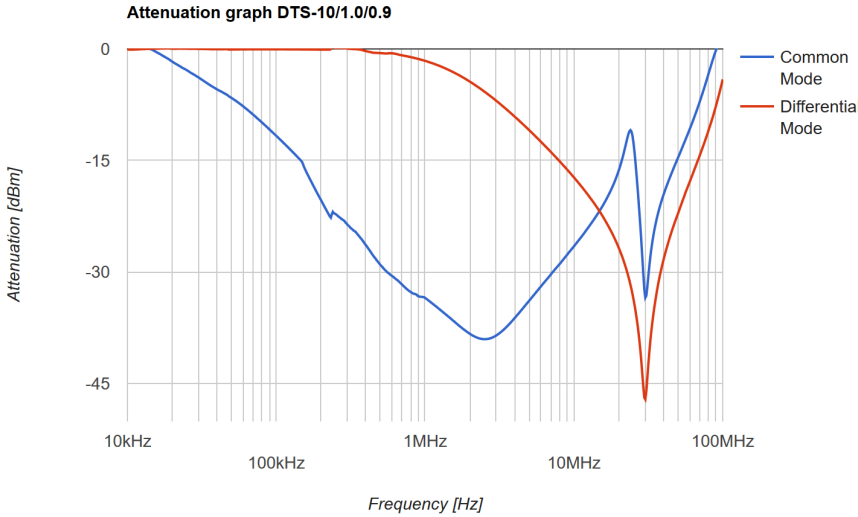
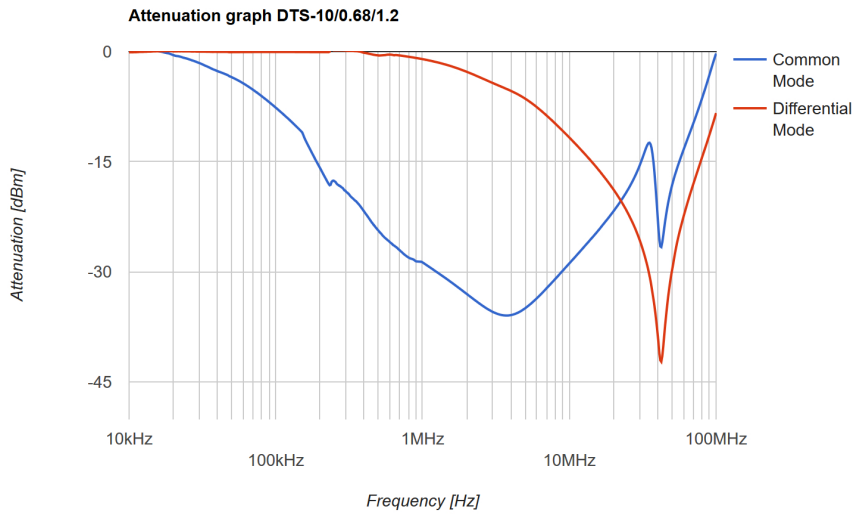


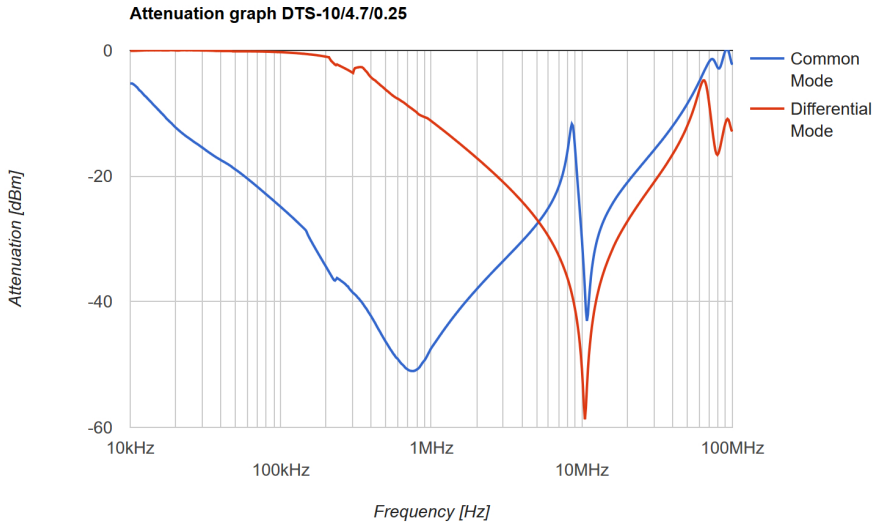
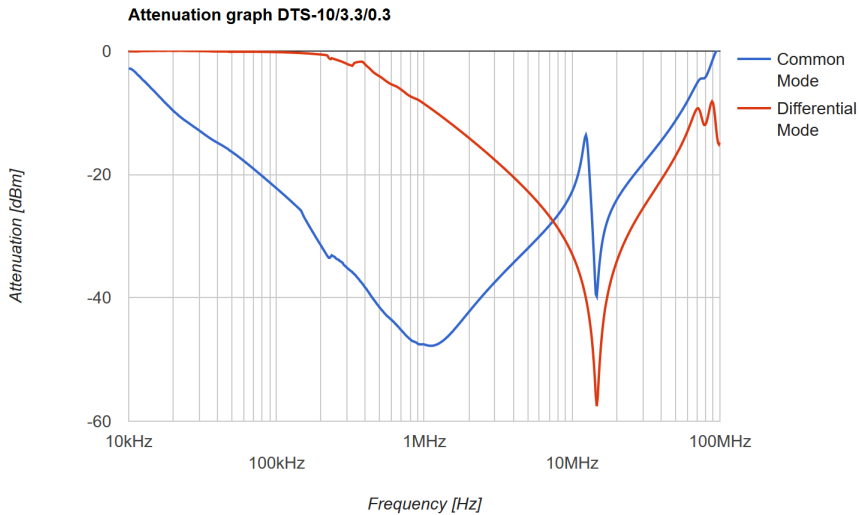
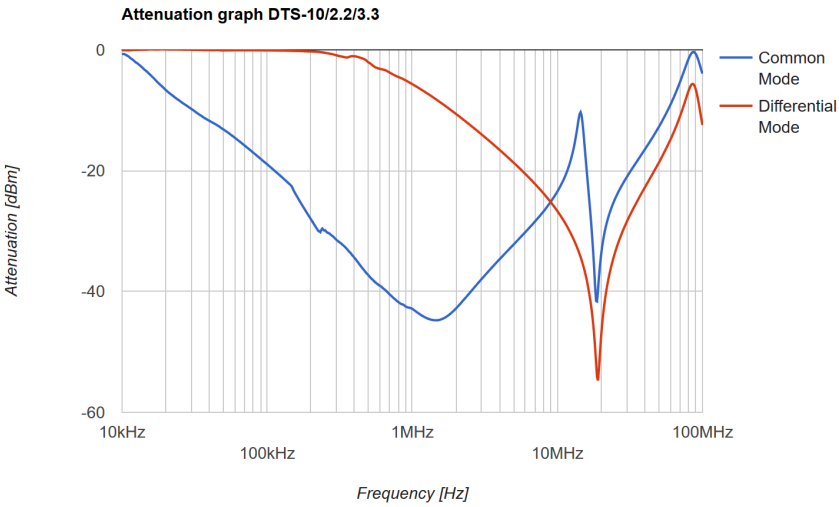
ATTENUATION:











X-ON Electronics

Largest Supplier of Electrical and Electronic Components

Click to view similar products for [Fixed Inductors](#) category:

Click to view products by [Feryster](#) manufacturer:

Other Similar products are found below :

[MLZ1608M6R8WTD25](#) [MLZ1608N6R8LT000](#) [MLZ1608N3R3LTD25](#) [MLZ1608N3R3LT000](#) [MLZ1608N150LT000](#)

[MLZ1608M150WTD25](#) [MLZ1608M3R3WTD25](#) [MLZ1608M3R3WT000](#) [MLZ1608M150WT000](#) [MLZ1608A1R5WT000](#)

[MLZ1608N1R5LT000](#) [B82432C1333K000](#) [PCMB053T-1R0MS](#) [PCMB053T-1R5MS](#) [PCMB104T-1R5MS](#) [CR32NP-100KC](#) [CR32NP-](#)

[151KC](#) [CR32NP-180KC](#) [CR32NP-181KC](#) [CR32NP-1R5MC](#) [CR32NP-390KC](#) [CR32NP-3R9MC](#) [CR32NP-680KC](#) [CR32NP-820KC](#)

[CR32NP-8R2MC](#) [CR43NP-390KC](#) [CR43NP-560KC](#) [CR43NP-680KC](#) [CR54NP-181KC](#) [CR54NP-470LC](#) [CR54NP-820KC](#) [CR54NP-8R5MC](#)

[MGDQ4-00004-P](#) [MGDU1-00016-P](#) [MHL1ECTTP18NJ](#) [MHL1JCTTD12NJ](#) [PE-51506NL](#) [PE-53601NL](#) [PE-53630NL](#) [PE-53824SNLT](#) [PE-](#)

[62892NL](#) [PE-92100NL](#) [PG0434.801NLT](#) [PG0936.113NLT](#) [PM06-2N7](#) [PM06-39NJ](#) [HC2LP-R47-R](#) [HC2-R47-R](#) [HC3-2R2-R](#) [HC8-1R2-R](#)