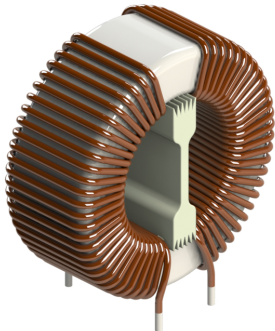


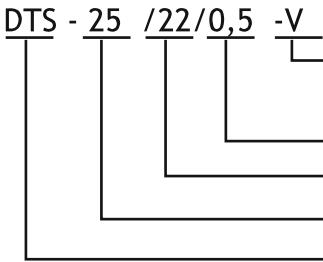
# DTS-25 CURRENT COMPENSATED CHOKES



**APPLICATIONS:**

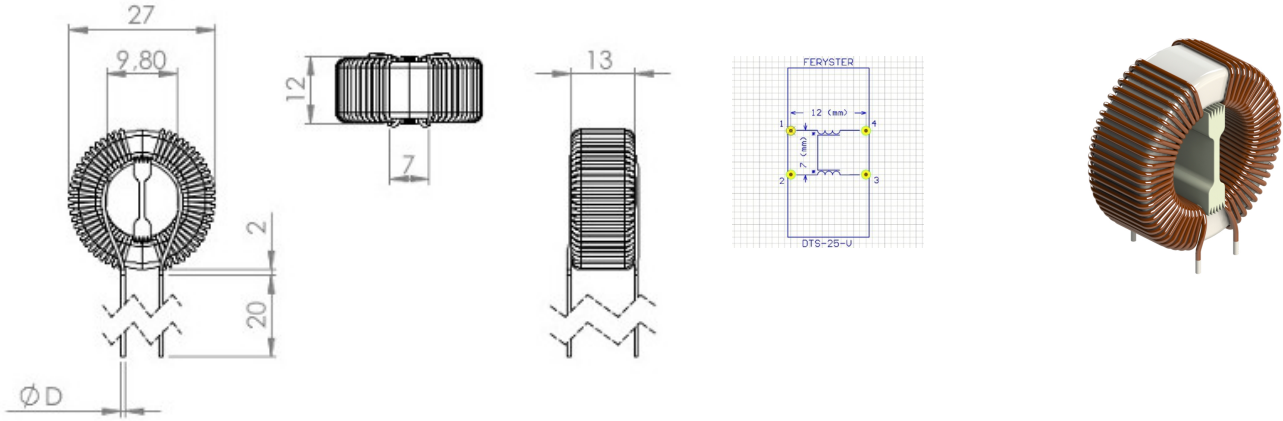
- Common-mode noise suppression on an AC power supply line and signal/data line

**ORDERING CODE:**

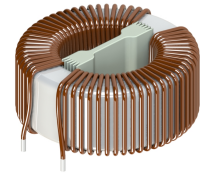
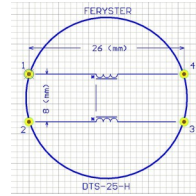
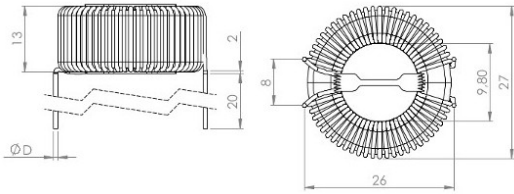


- H - horizontal, V - vertical, CV - case vertical, CH - case horizontal, BV - base vertical, KM - KM-5 base
- rated current in Amps
- inductance in mH
- core size
- product symbol

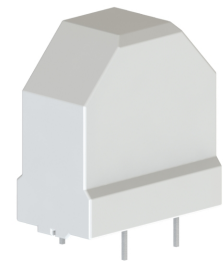
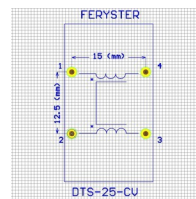
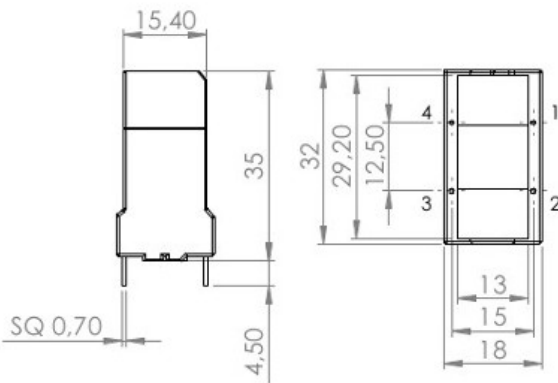
**DIMENSIONS:**



vertical version

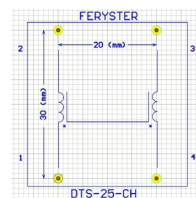
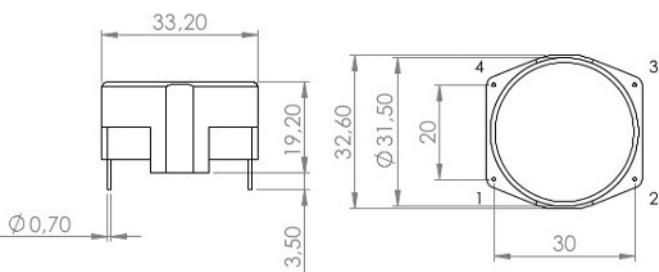


horizontal version



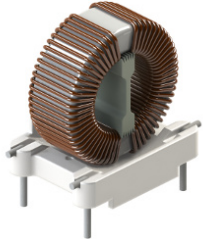
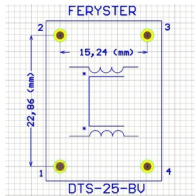
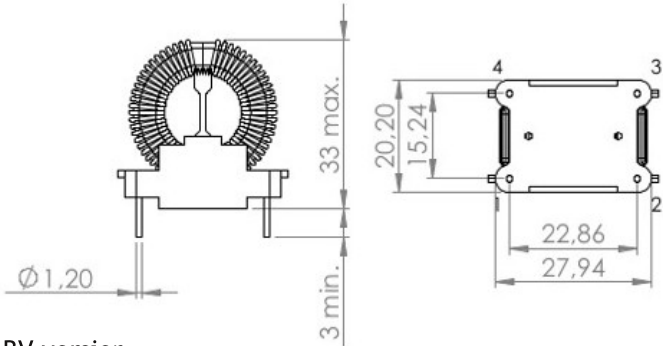
CV version  
OBUD-TOR-VGH 33,5x13-YC  
mat: PA66 FR50 [E41938](#)

CV version



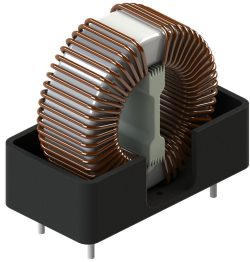
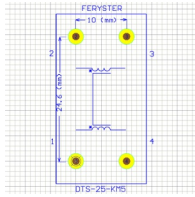
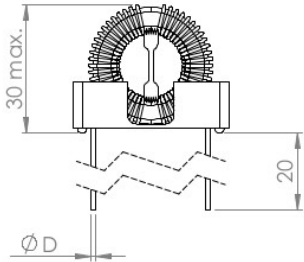
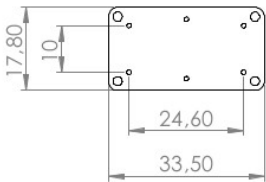
CH version  
OBUD-TOR-H-31X19  
mat: Ultramid A3X2G5 [E36632](#)  
UL EIS FER-130 class B - 130°C

CH version



BV version  
 POD-23X16-V-4P-TOR  
 mat: PBT/GF PET/GF UL-94V-0

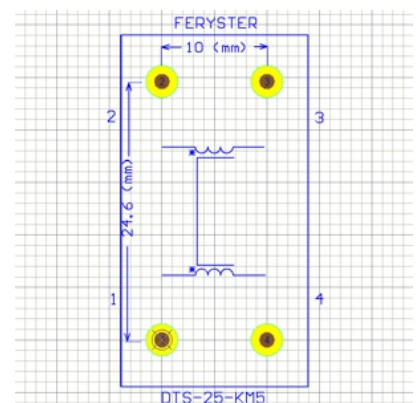
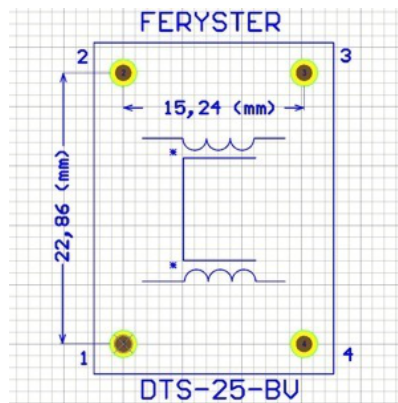
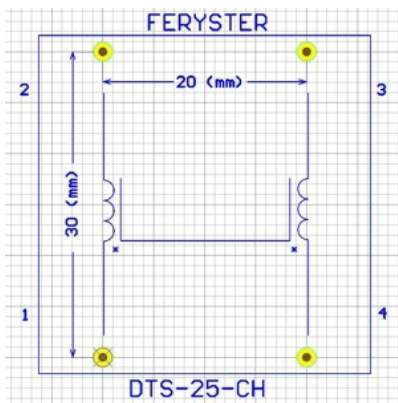
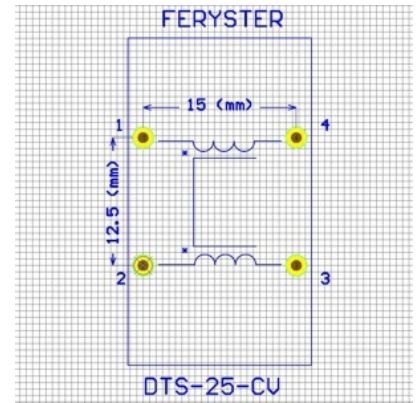
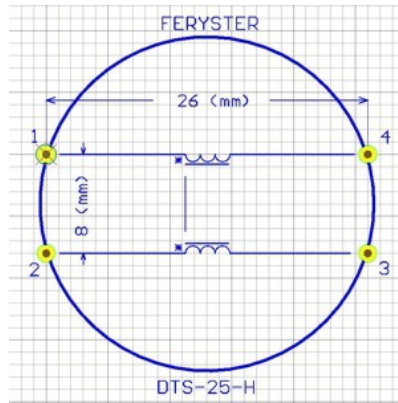
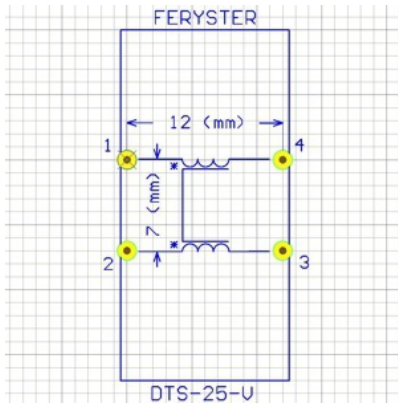
BV version



KM version  
 POD-FATR-KM5-BASE

KM version

**FOOTPRINTS:**

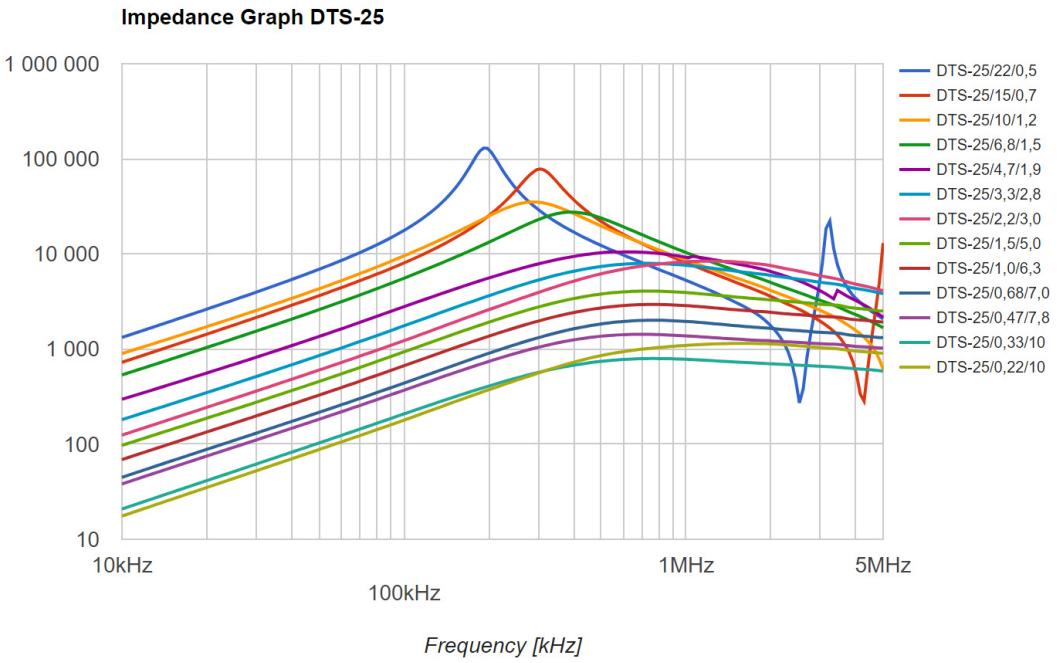


**PROPERTIES:**

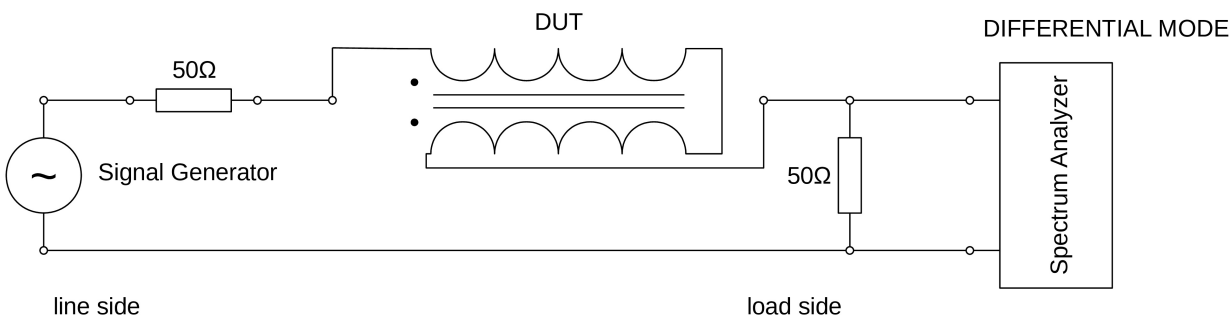
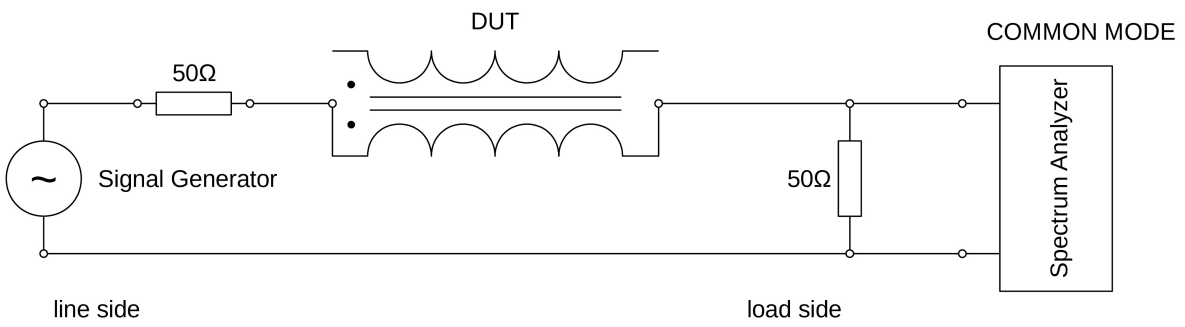
Part number	L <sub>nom</sub> [mH]	I <sub>nom</sub> [A]	RDC [Ω]	Mounting version						ØD [mm]
				V	H	CV	CH	BV	BV	
DTS-25/0,22/10	2x0,22	10	2x0,003	✓	✓	-	-	-	✓	1,4
DTS-25/0,33/10	2x0,33	10	2x0,004	✓	✓	-	-	-	✓	1,4
DTS-25/0,47/7,8	2x0,47	7,8	2x0,006	✓	✓	-	-	-	✓	1,2
DTS-25/0,68/7,0	2x0,68	7,0	2x0,009	✓	✓	-	-	-	✓	1,1
DTS-25/1,0/6,3	2x1,0	6,3	2x0,015	✓	✓	-	-	-	✓	1,1
DTS-25/1,5/5,0	2x1,5	5,0	2x0,02	✓	✓	-	-	-	✓	0,9
DTS-25/2,2/3,0	2x2,2	3,0	2x0,04	✓	✓	✓	✓	✓	✓	0,8
DTS-25/3,3/2,8	2x3,3	2,8	2x0,06	✓	✓	✓	✓	✓	✓	0,7
DTS-25/4,7/1,9	2x4,7	1,9	2x0,09	✓	✓	✓	✓	✓	-	0,6
DTS-25/6,8/1,5	2x6,8	1,5	2x0,16	✓	✓	✓	✓	✓	-	0,6
DTS-25/10/1,2	2x10	1,2	2x0,20	✓	✓	✓	✓	✓	-	0,5
DTS-25/15/0,7	2x15	0,7	2x0,41	✓	✓	✓	✓	✓	-	0,4
DTS-25/22/0,5	2x22	0,5	2x0,65	✓	✓	✓	✓	✓	-	0,4

- Inductance tolerance: -20% +50%
- LCR meter f=10kHz
- Dielectric withstanding voltage 2000V
- RDC Cu wire resistance ±20%

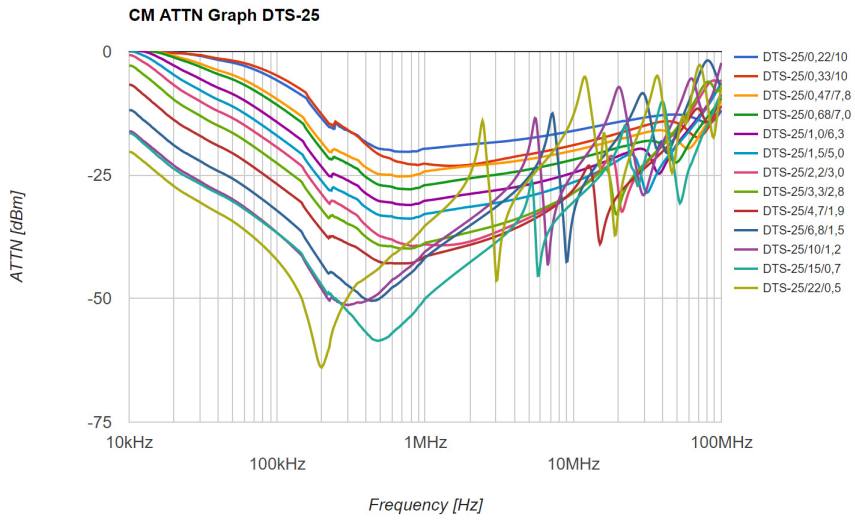
**CHARACTERISTICS:**



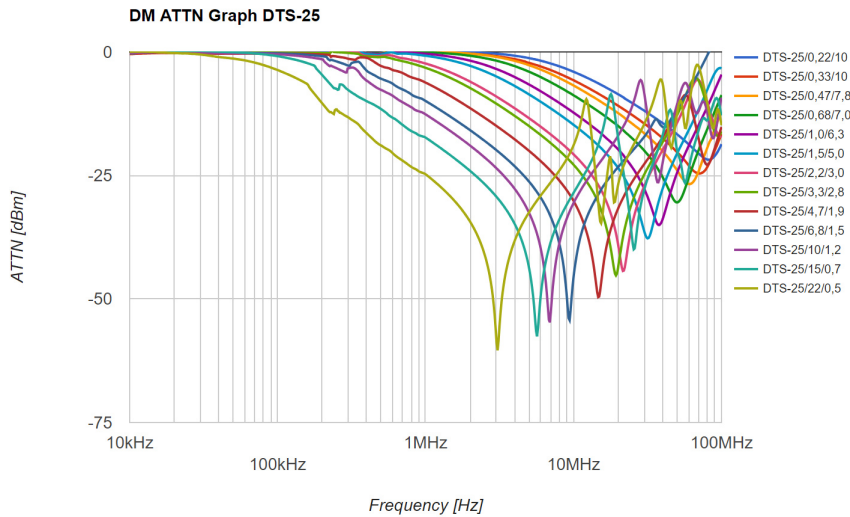
**ATTENUATION MEASUREMENT METHOD:**



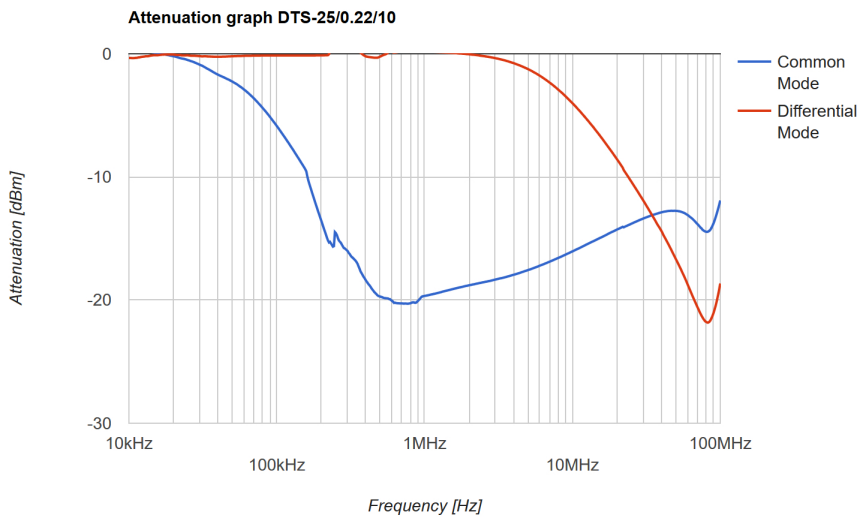
**COMMON MODE ATTENUATION:**

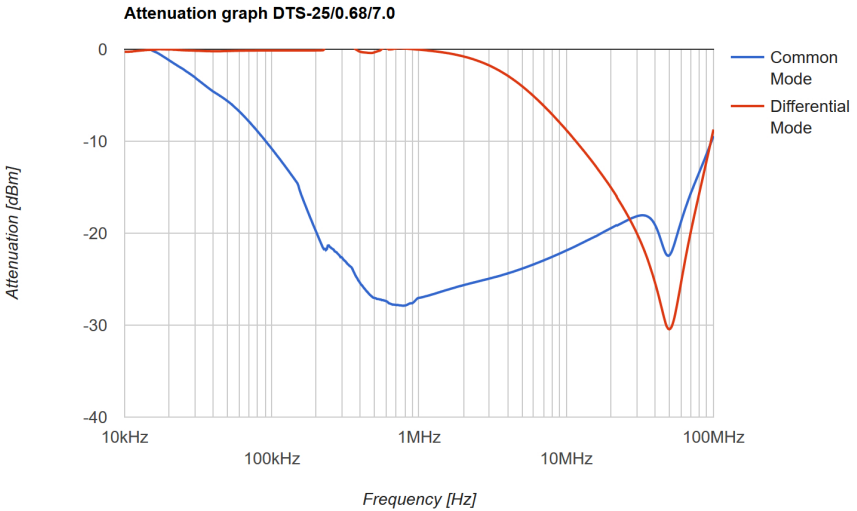
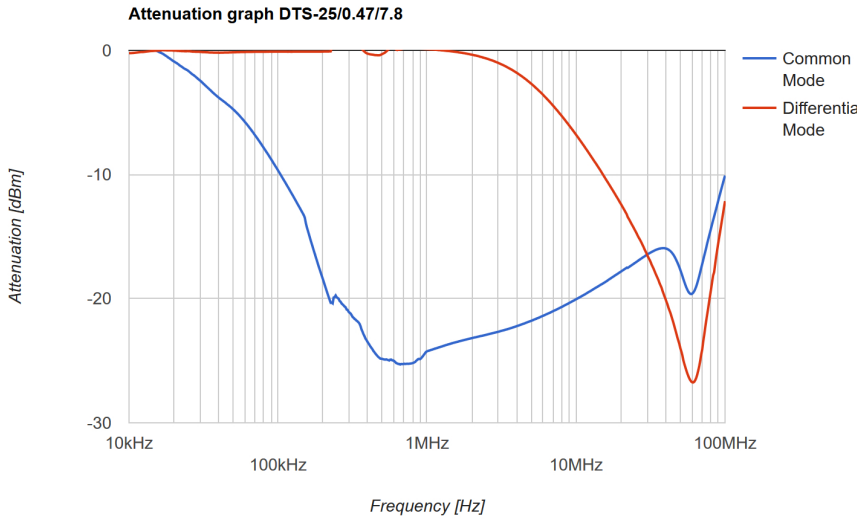
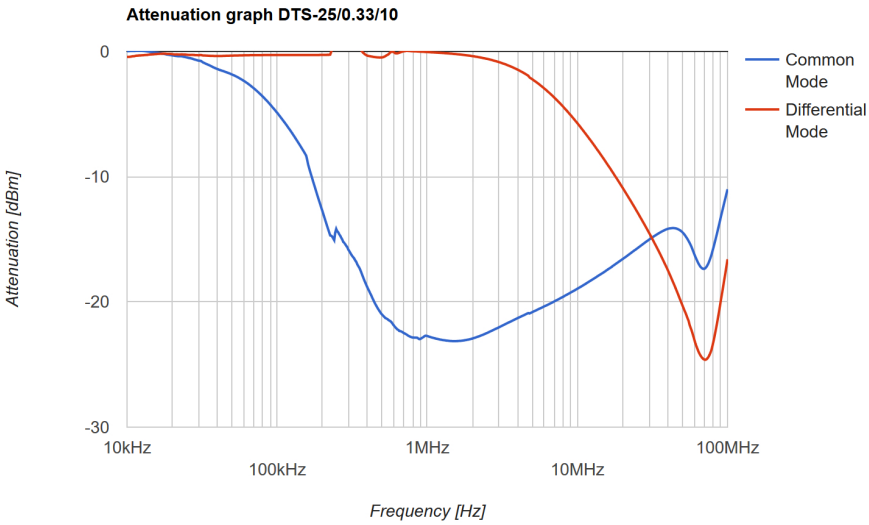


**DIFFERENTIAL MODE ATTENUATION:**

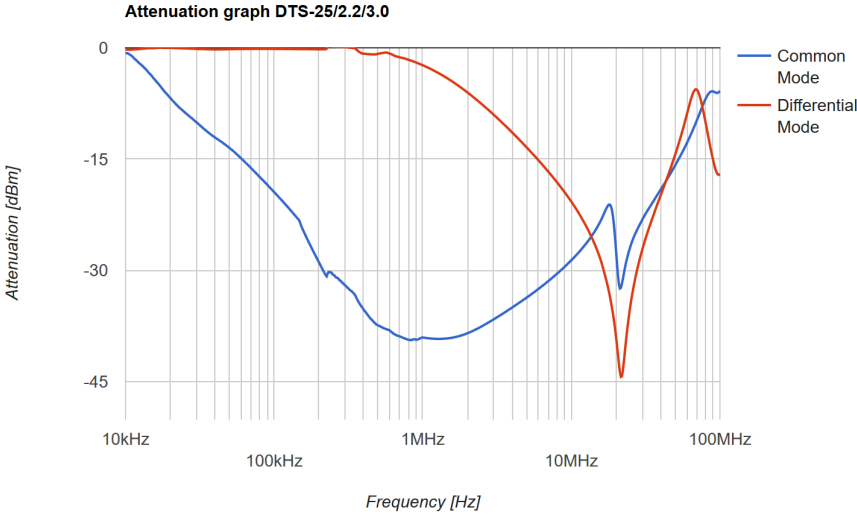
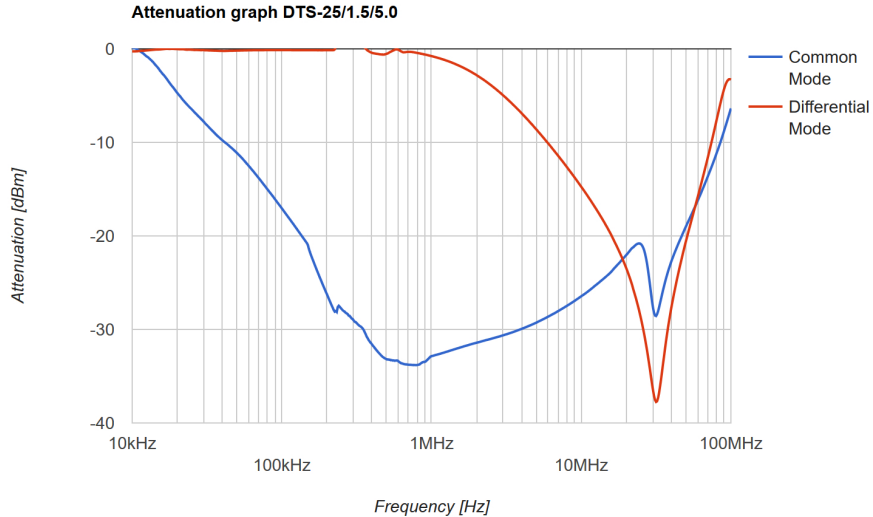
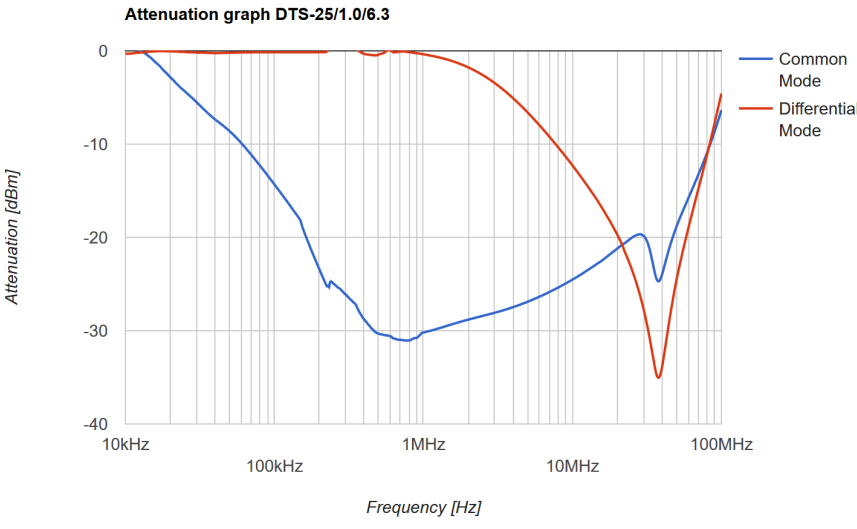


**ATTENUATION:**

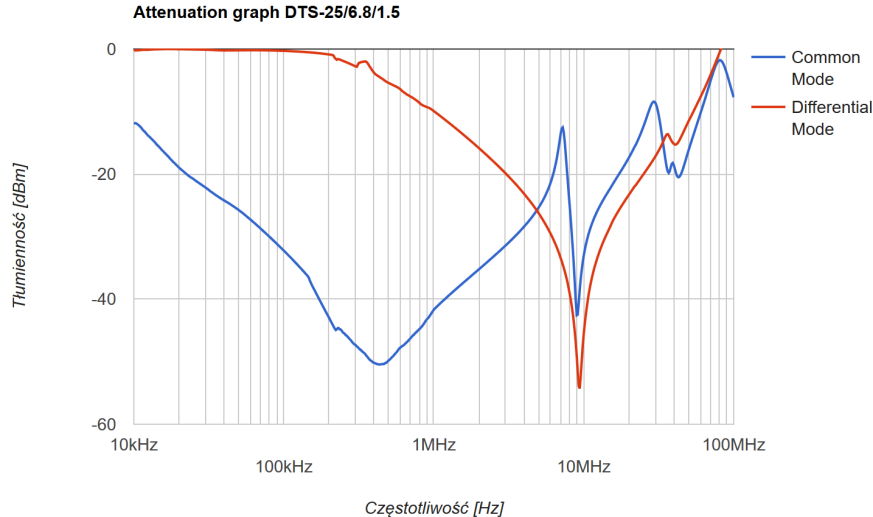
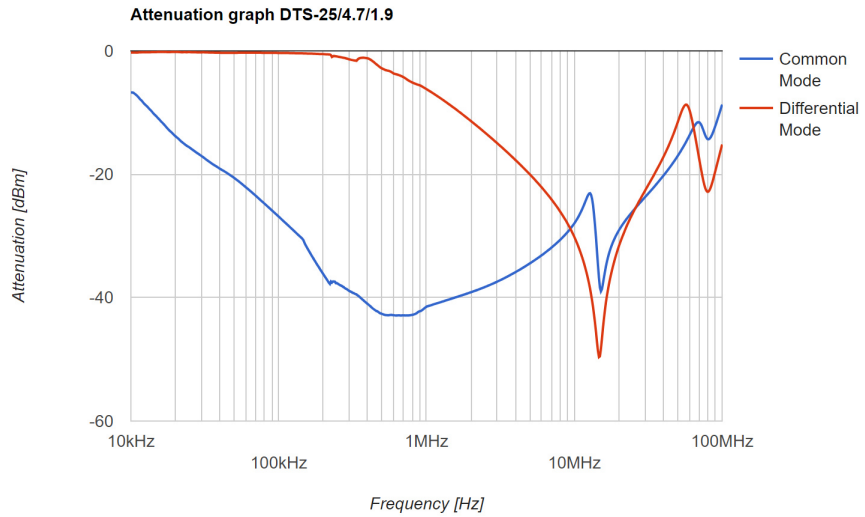
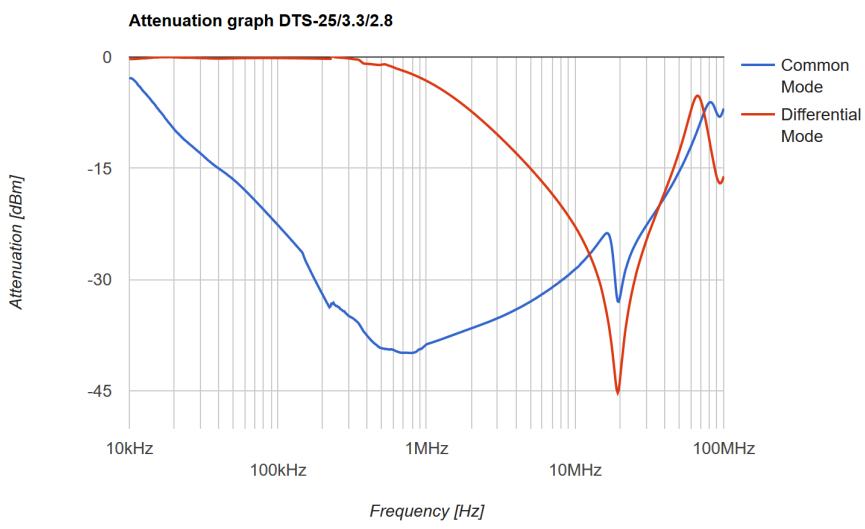


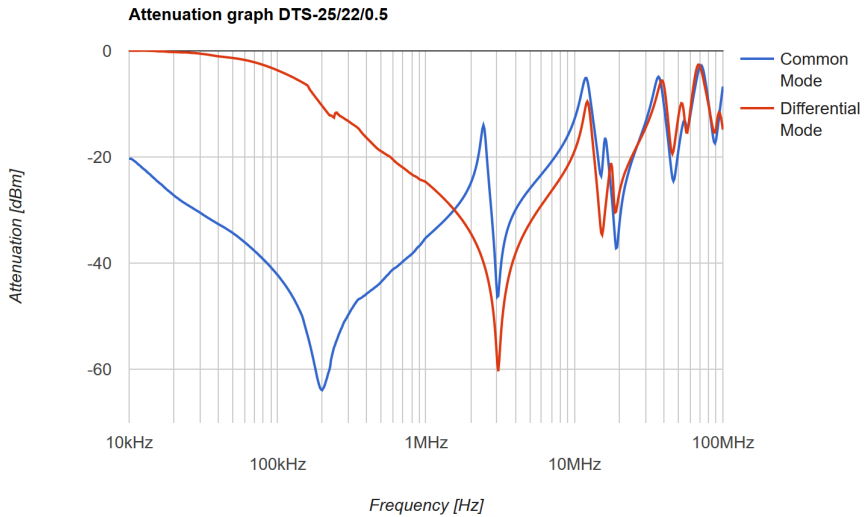
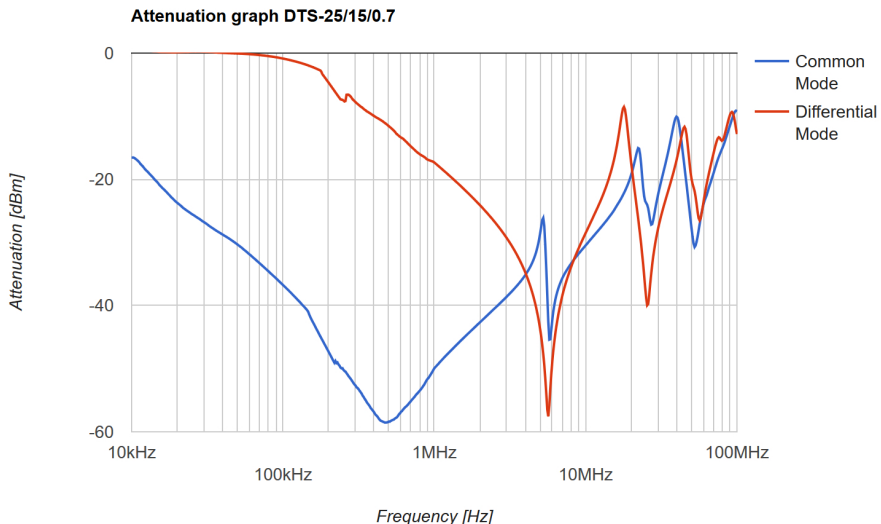
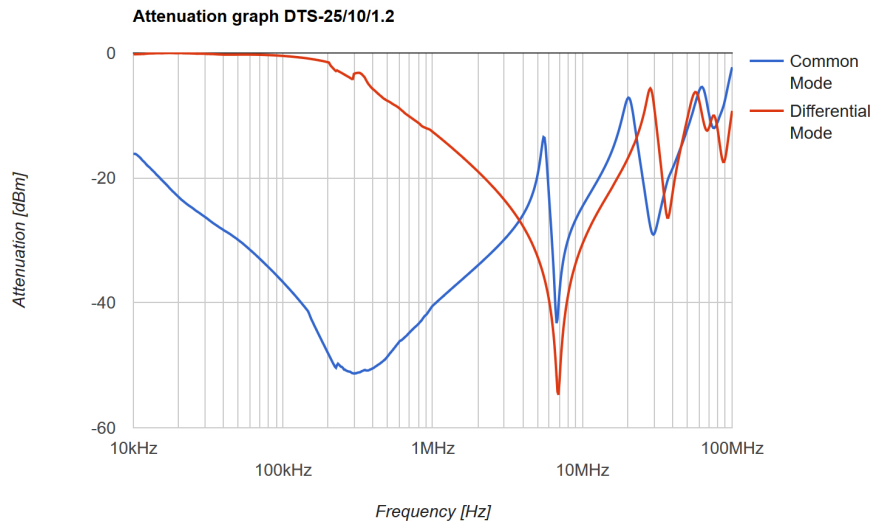












## X-ON Electronics

Largest Supplier of Electrical and Electronic Components

*Click to view similar products for [Fixed Inductors](#) category:*

*Click to view products by [Feryster](#) manufacturer:*

Other Similar products are found below :

[MLZ1608M6R8WTD25](#) [MLZ1608N6R8LT000](#) [MLZ1608N3R3LTD25](#) [MLZ1608N3R3LT000](#) [MLZ1608N150LT000](#)  
[MLZ1608M150WTD25](#) [MLZ1608M3R3WTD25](#) [MLZ1608M3R3WT000](#) [MLZ1608M150WT000](#) [MLZ1608A1R5WT000](#)  
[MLZ1608N1R5LT000](#) [B82432C1333K000](#) [PCMB053T-1R0MS](#) [PCMB053T-1R5MS](#) [PCMB104T-1R5MS](#) [CR32NP-100KC](#) [CR32NP-151KC](#) [CR32NP-180KC](#) [CR32NP-181KC](#) [CR32NP-1R5MC](#) [CR32NP-390KC](#) [CR32NP-3R9MC](#) [CR32NP-680KC](#) [CR32NP-820KC](#)  
[CR32NP-8R2MC](#) [CR43NP-390KC](#) [CR43NP-560KC](#) [CR43NP-680KC](#) [CR54NP-181KC](#) [CR54NP-470LC](#) [CR54NP-820KC](#) [CR54NP-8R5MC](#)  
[MGDQ4-00004-P](#) [MGDU1-00016-P](#) [MHL1ECTTP18NJ](#) [MHL1JCTTD12NJ](#) [PE-51506NL](#) [PE-53601NL](#) [PE-53630NL](#) [PE-53824SNLT](#) [PE-62892NL](#) [PE-92100NL](#) [PG0434.801NLT](#) [PG0936.113NLT](#) [PM06-2N7](#) [PM06-39NJ](#) [HC2LP-R47-R](#) [HC2-R47-R](#) [HC3-2R2-R](#) [HC8-1R2-R](#)