

## POWERWHITE LINEAR MODULES



### FEATURES / BENEFITS

- ▲ Fully modular linear arrays of ultra high brightness LEDs
- ▲ Utilizes the latest 80+ lumen LUXEON® Rebel™ LEDs for cool white, 70+ lumen for neutral white & 50+ lumen for warm white
- ▲ Choice of color temperatures & optical patterns
- ▲ >70% lumen maintenance @ 60,000 hours at max acceptable ambient temperature
- ▲ Lifesaver® thermal protection

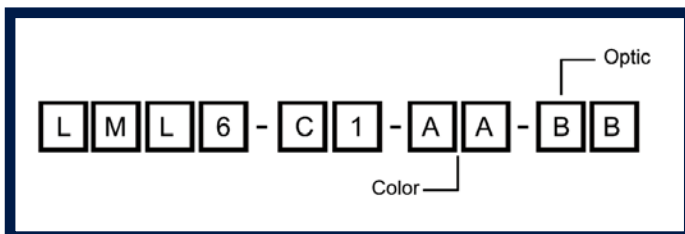
### OPERATING CONDITIONS

- ▲ Operating ambient temperature -30°C to +55° (@350mA)
- ▲ Requires constant current driver
- ▲ Compatible drivers include Dialight Lumidrives PWD60-35-70  
Runs 3-8 modules @ 350mA, 2-4 modules @700mA
- ▲ Additional heatsinking required when driven @ 700mA

### APPLICATION

- ▲ Linear lighting
- ▲ Accent lighting
- ▲ Flood lighting
- ▲ Street & area lighting
- ▲ General illumination

### ORDERING INFORMATION



### MATERIALS / FINISH

- ▲ Six premium flux LUXEON Rebel LEDs per module
- ▲ Anodized cast aluminum heatsink
- ▲ Polycarbonate cover
- ▲ Dialight-Lumidrives optics
- ▲ Modular quick connect cables
- ▲ Module to module connector cable included

#### Color (A)

**CW** = Min 80 lumen 'v bin'  
Cool white 5300K

**NW** = Min 70 lumen 's bin'  
Neutral white 3950K

**WW** = Min 50 lumen 'n bin'  
Warm white 2950K

#### Optic (B)

**SP** = 5 degree spot

**MD** = 15 degree spot

**WD** = 25 degree wide

**OV** = 5X20 degree oval

**FR** = 7 degree frosted spot

#### Connectors (sold separately)

**LML6-CON-CAB** =  
Entry cable, driver to 1st module

**LML6-TER-CAB** =  
End plug (required)

\* Cables use 0.5mm<sup>2</sup> AWG12 wires

#### Dialight-Lumidrives Ltd.

York House • Wetherby Road • Long Marston, York, YO26 7NH  
Tel: +44(0) 1904 739150 • Fax: +44(0) 1904 737926 • www.dialight.com



#### Dialight Corporation

1501 Route 34 South • Farmingdale, NJ 07727 USA  
Tel: (1) 732-919-3119 • Fax: (1) 732-751-5778 • www.dialight.com



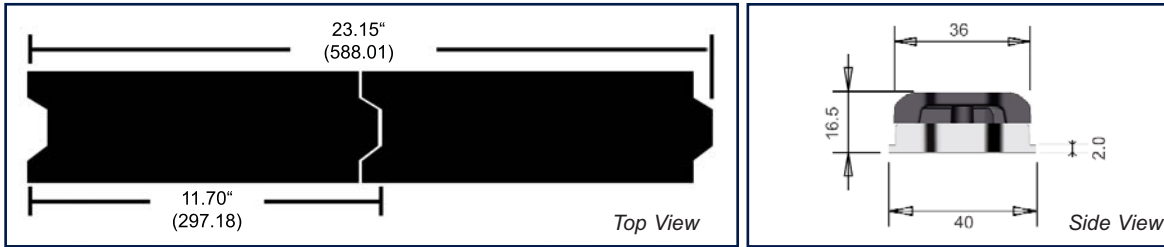
MDEXLUMPWM\_A

## MECHANICAL DIMENSIONS

11.7" x 1.498" x 0.585"  
(297.18mm x 38.05mm x 14.86mm)

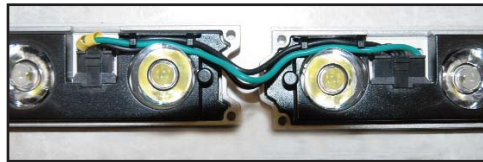
Mounting hole spacing = 3.22" (81.8mm)  
Max screw size #8

Total length for "Z" units connected end to end =  
(Z x 11.7) - ((Z-1) x 0.25) (inches)  
(Z x 297.2) - ((Z-1) x 6.35) (mm)



Example: 2 units total length = 23.15" (588.01)

## ASSEMBLY INFORMATION



1) Position 'tab' end of first powerwhite module by input wires/driver. (**Do not connect power to entry cable before completing steps 2-6**)

2) Remove cover from module (**Do not remove mask**). Modules may be screwed down onto surface by inserting two M6 or 8/32 flathead screws through screw holes.

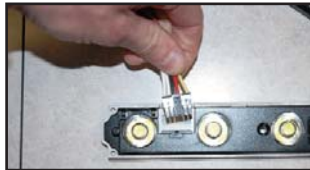
3) Insert 6 pin prong from LML6-CON-CAB entry cable into 6 prong receptacle near tab end of first module.

4) Insert 4 pin prong from connector cable into 'notch' end of module, insert 6 pin prong from connector cable into 'tab' end of next module (repeat for each additional module).

5) Connector cable wires can be routed through interior of modules by placing them into interior wire holders.

6) Insert LML6-TER-CAB 4-pin terminal prong into 'notch' end of last module in run (required).

7) Replace covers and connect power to LM60-CON-CAB



## INPUT WIRE CHART

Color wire on A50-LML6-CON-CAB entry cable	To. or	Connect to on PWD60-35-70
White 1	Thermistor	Wire 5
White 2	Thermistor	Wire 6
Red	Driver +	Wire 2 350mA Wires 1 & 2 700mA
Black	Driver -	Wire 3
Green	Ground	Green / Yellow Stripe

## PHOTOMETRIC DATA

TBD  
IES 32 files available, consult factory

### Dialight-Lumidrives Ltd.

York House • Wetherby Road • Long Marston, York, YO26 7NH  
Tel: +44(0) 1904 739150 • Fax: +44(0) 1904 737926 • www.dialight.com



### Dialight Corporation

1501 Route 34 South • Farmingdale, NJ 07727 USA  
Tel: (1) 732-919-3119 • Fax: (1) 732-751-5778 • www.dialight.com



MDEXLUMPWM\_A

## **X-ON Electronics**

Largest Supplier of Electrical and Electronic Components

*Click to view similar products for [Lumidrives](#) manufacturer:*

Other Similar products are found below :

[Lumidrives](#)