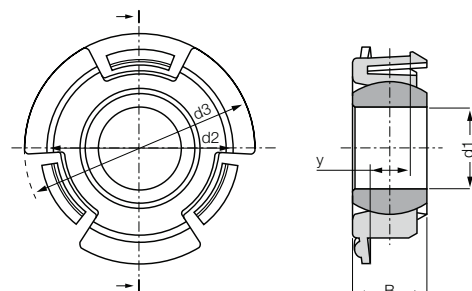


Self-aligning clip bearing: ECLM-HD



- High axial and radial loads
- Adjustment of axial and radial clearance by preloading
- Very easy installation by simply snap into sheet metal

Order key

Type	Size [mm]	Version
------	-----------	---------

E CL M - 08 - 04 - HD

Dimensional series E	Self-aligning clip bearing	Metric	Inner-Ø d1	Metal sheet thickness	Heavy Duty
----------------------	----------------------------	--------	------------	-----------------------	------------

- i Material:**
 Housing: **igumid G** ▶ Page 1496
 Spherical ball: **iglidur® W300** ▶ Page 153
 Other spherical balls upon request
 ▶ Page 763

- No additional axial fastening necessary
- For plate thickness 4.0–8.0 mm

Technical data

Part No.	Max. static compressive strength (short-term)		Max. static compressive strength (long-term)		Weight [g]
	radial [N]	axial [N]	radial [N]	axial [N]	
ECLM-08-04-HD	1,750	125	875	60	2.0
ECLM-10-05-HD	2,500	150	1,250	75	3.1
ECLM-12-06-HD	3,500	175	1,750	85	3.8
ECLM-16-08-HD	4,500	250	2,250	125	7.0
ECLM-20-08-HD	6,000	330	3,000	165	12.0

Dimensions [mm]

Part No.	d1 E10	B	d2 ±0.15	d3	y ±0.1	Max. pivot angle
ECLM-08-04-HD	8.0	8.0	18.0	25	4.0	28°
ECLM-10-05-HD	10.0	9.0	22.0	28	5.0	24°
ECLM-12-06-HD	12.0	10.0	24.0	32	6.0	24°
ECLM-16-08-HD	16.0	13.0	30.0	38	8.0	22°
ECLM-20-08-HD	20.0	16.0	36.0	44	8.0	21°

Spherical ball materials to choose ▶ Page 763



REM:
low-cost



JEM:
low moisture
absorption



J4EM:
low-cost
and low moisture
absorption



J4VEM:
clearance free
preloaded
spherical ball

X-ON Electronics

Largest Supplier of Electrical and Electronic Components

Click to view similar products for [Other Tools](#) category:

Click to view products by [Igus](#) manufacturer:

Other Similar products are found below :

[CR-05FL7--150R](#) [CR-05FL7--698K](#) [899-2-KT46](#) [899-5-KT46](#) [CR-0AFL4--332K](#) [CR-12FP4--260R](#) [5718X-01PD-19RO](#)
[CRCW04021100FRT7](#) [CRCW04021961FRT7](#) [5800-0090](#) [CRCW04024021FRT7](#) [CRCW040254R9FRT7](#) [CRCW0603102JRT5](#) [59065-5](#) [00-8273-RDPP](#) [00-8729-WHPP](#) [593033](#) [593058](#) [593072](#) [593564100](#) [593575](#) [593591](#) [593593](#) [LTLA506SBLAMNBL](#) [CRCW08052740FRT1](#)
[LUC-012S070DSM](#) [LUC-018S070DSP](#) [599-2021-3-NME](#) [599-JJ-2021-03](#) [00-5080-YWPP](#) [5E4750/01-20R0-T/R](#) [LW1A-L1-GD](#) [LW1A-L1-GL](#) [LW1A-P1-GD](#) [LW1L-A1C10V-GL](#) [LW1L-M1C70-A](#) [0202-0173](#) [00-9089-RDPP](#) [CRCW2010331JR02](#) [01-1003W-8/32-10](#) [601-GP-08-KT39](#) [601-JJ-06](#) [601-SPB](#) [601YSY](#) [602-JJ-03](#) [602SPB](#) [602Z](#) [603-JJ-07-FP](#) [603-JJY-04](#) [604J](#)