

SEMIKRON® 1

Power Bridge Rectifiers

SKD 31

Features

- Sturdy isolated metal baseplate
- Fast-on terminals with solder tips
- Suitable for wave soldering
- High surge current ratings
- UL recognized, file no. E 63 532

Typical Applications*

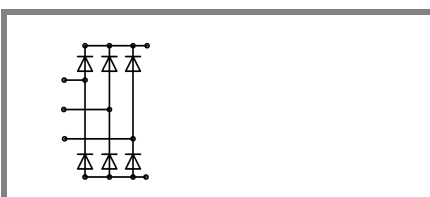
- DC power supply, e.g. for transistorized AC motor controllers
- Battery chargers
- Non-controlled DC motor field supply
- Recommended snubber network:
RC: 0.1 μ F, 50 Ω ($P_R = 1$ W)

1) Freely suspended or mounted on an insulator

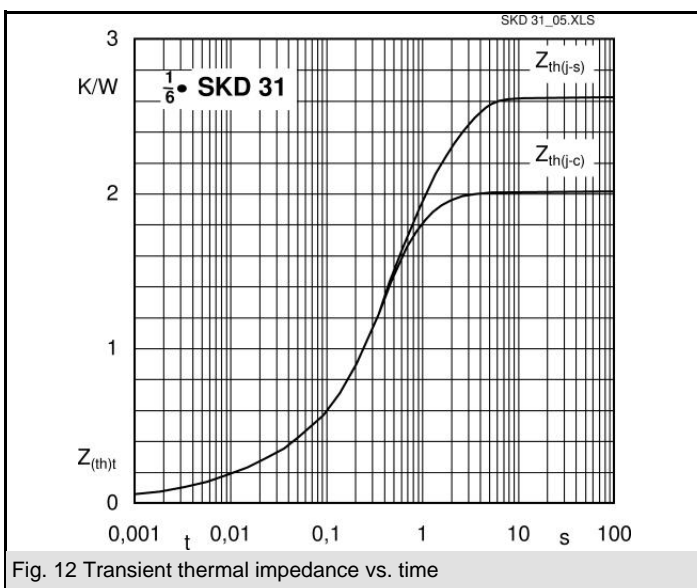
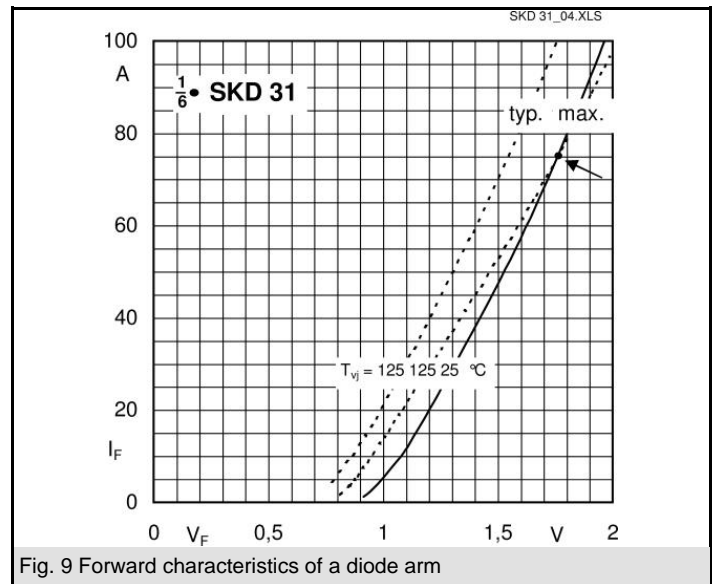
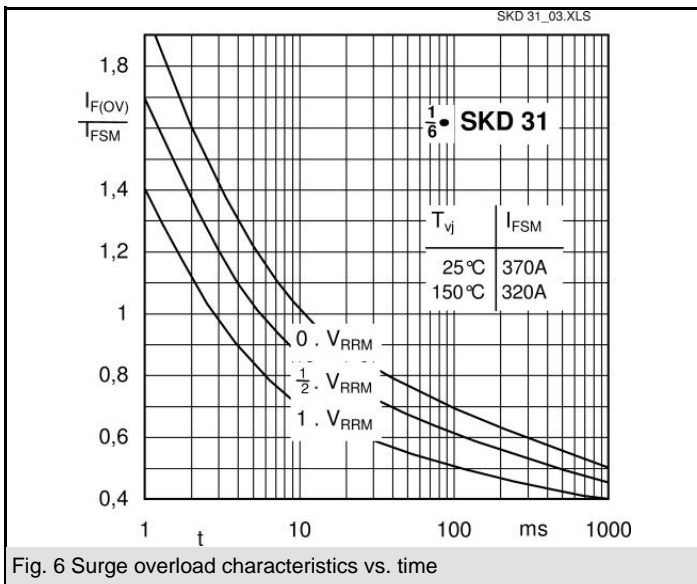
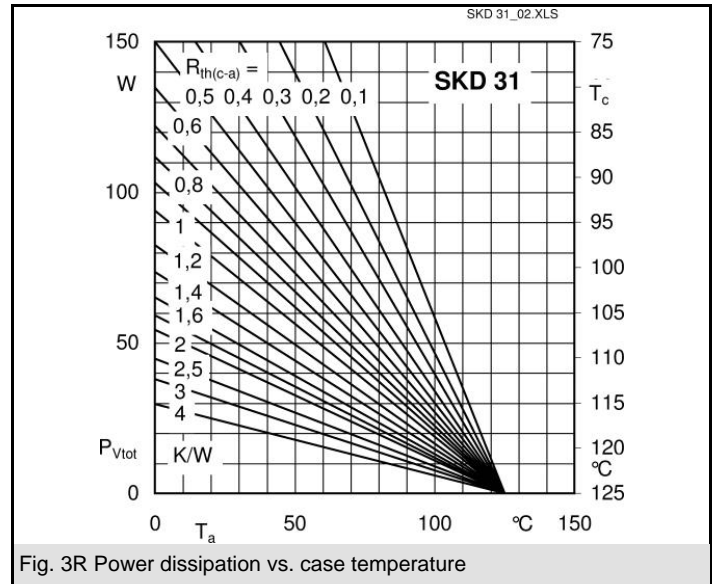
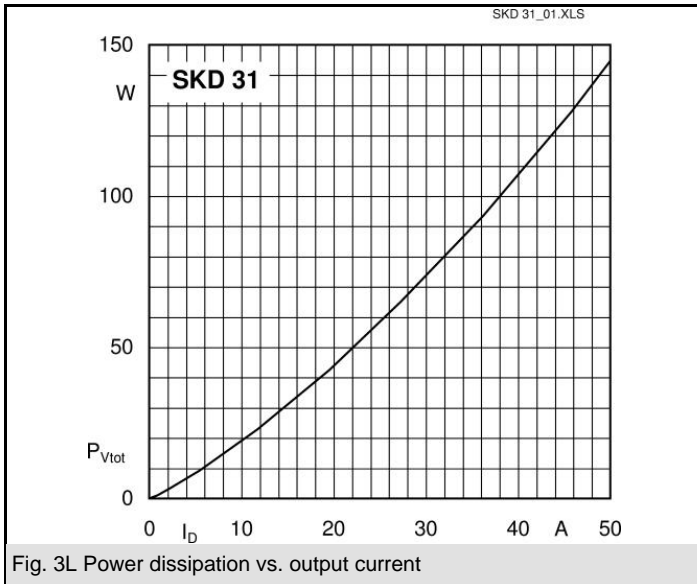
2) Mounted on a painted metal sheet of min. 250 x 250 x 1 mm

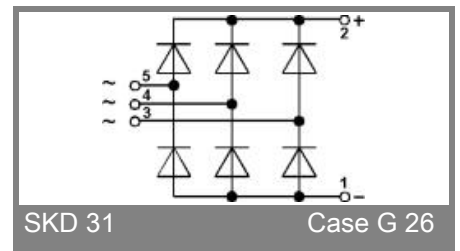
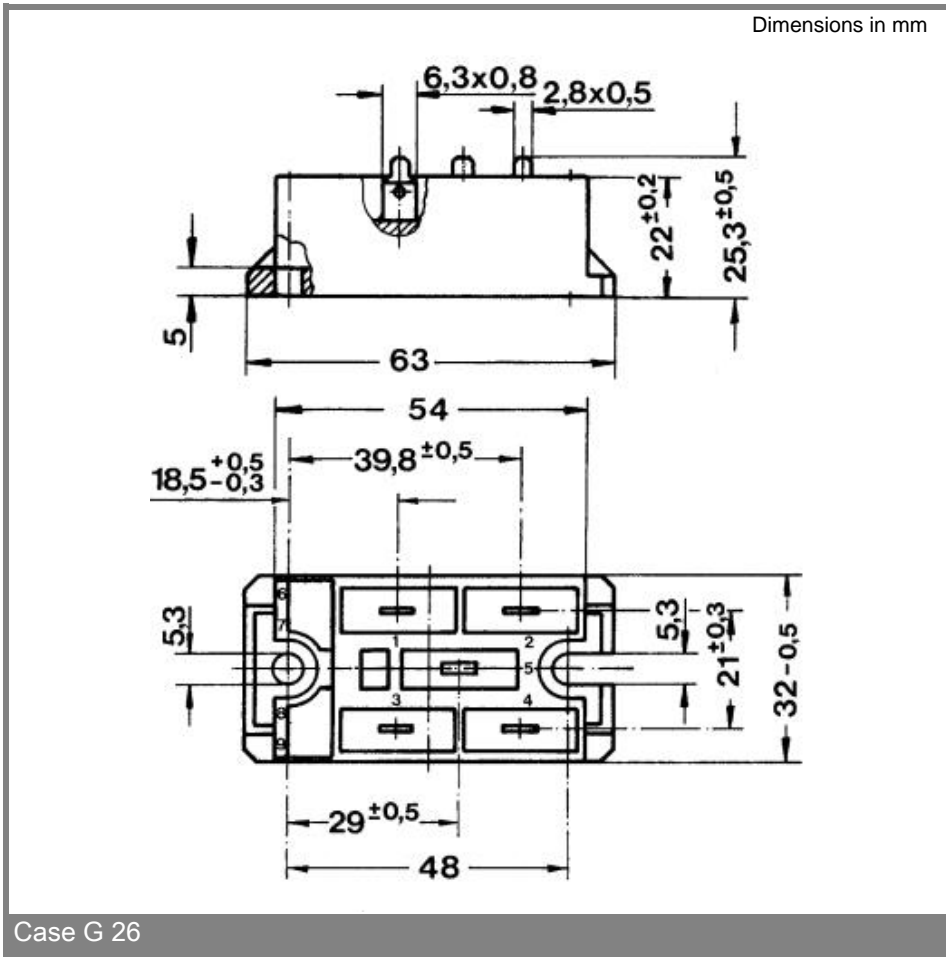
V_{RSM} V	V_{RRM}, V_{DRM} V	$I_D = 31$ A (full conduction) ($T_c = 100$ °C)
200	200	SKD 31/02
400	400	SKD 31/04
800	800	SKD 31/08
1200	1200	SKD 31/12
1400	1400	SKD 31/14
1600	1600	SKD 31/16

Symbol	Conditions	Values	Units
I_D	$T_c = 85$ °C	44	A
	$T_a = 45$ °C; isolated ¹⁾	5,3	A
	$T_a = 45$ °C; chassis ²⁾	17	A
	$T_a = 45$ °C; R4A/120 (P1A/120)	27 (32)	A
	$T_a = 35$ °C; P1A/120 F	56	A
I_{FSM}	$T_{vj} = 25$ °C; 10 ms	370	A
	$T_{vj} = 125$ °C; 10 ms	320	A
i^2t	$T_{vj} = 25$ °C; 8,3 ... 10 ms ms	685	A ² s
	$T_{vj} = 125$ °C; 8,3 ... 10 ms ms	510	A ² s
V_F	$T_{vj} = 25$ °C; $I_F = 75$ A	max. 1,75	V
$V_{(TO)}$	$T_{vj} = 125$ °C	max. 0,85	V
r_T	$T_{vj} = 125$ °C	max. 12	m Ω
I_{RD}	$T_{vj} = 25$ °C; $V_{DD} = V_{DRM}$; $V_{RD} = V_{RRM}$	max. 0,2	mA
	$T_{vj} = 125$ °C; $V_{DD} = V_{DRM}$; $V_{RD} = V_{RRM}$	2	mA
$R_{th(j-c)}$	per diode	2	K/W
	total	0,33	K/W
$R_{th(c-s)}$	total	0,1	K/W
	isolated ¹⁾ (chassis ²⁾)	15 (3)	K/W
T_{vj}		- 40 ... + 125 °C	°C
T_{stg}		- 40 ... + 125 °C	°C
V_{isol}	a. c. 50 Hz; r.m.s.; 1 s / 1 min.	3600 (3000)	V
M_s	to heatsink	2 \pm 15 %	Nm
M_t		66	g
Case		G 26	



SKD





* The specifications of our components may not be considered as an assurance of component characteristics. Components have to be tested for the respective application. Adjustments may be necessary. The use of SEMIKRON products in life support appliances and systems is subject to prior specification and written approval by SEMIKRON. We therefore strongly recommend prior consultation of our personal.

X-ON Electronics

Largest Supplier of Electrical and Electronic Components

Click to view similar products for [Semikron manufacturer](#):

Other Similar products are found below :

[SKD 51/16](#) [SKKT 42B12 E](#) [SKKT 57/12E](#) [SKM 200GAR125D](#) [SKR 141F15](#) [SKB 60/08](#) [SKKH 122/16E](#) [SKYPER 32 R](#) [SKKD 260/16](#)
[SKKL 92/16E](#) [SKD 31/08](#) [SKD 62/12](#) [SKKD 380/08](#) [SKKH 162/18E](#) [SKKH 72/20E H4](#) [SKKT 250/12E](#) [SKYPER 32 R UL](#) [SKN 100/12](#)
[SKIIP 24AC12T4V1 M20](#) [SKIIP 39AC126V2 M20](#) [SKIIP 39ANB16V1 M20](#) [SKKH 570/16E](#) [SKD 30/04A1](#) [SKM 400GAL12E4](#) [SK 25 UT](#)
[12](#) [SKR70/04](#) [SKD 30/16A1](#) [SKKT 42/08E](#) [SKBT 40/12](#) [SKCH 40/08](#) [SKD 110/08](#) [SKD 210/18](#) [SKD 82/08](#) [SKN 60F15](#) [SKR 60F12](#)
[SKB 30/04A1](#) [SKR 100/12](#) [SKIIP 28ANB16V2 M20](#) [SKIIP 35NAB126V10 M20](#) [SKB 60/04](#) [SKB 60/12](#) [SKD 60/16](#) [SKDT 60/12](#) [SKKT](#)
[106/18E](#) [SKR 130/14](#) [SKB 60/16](#) [SKCH 40/16](#) [SKKH 106/14E](#) [SKKT 106B12 E](#) [SKKT 570/16E](#)